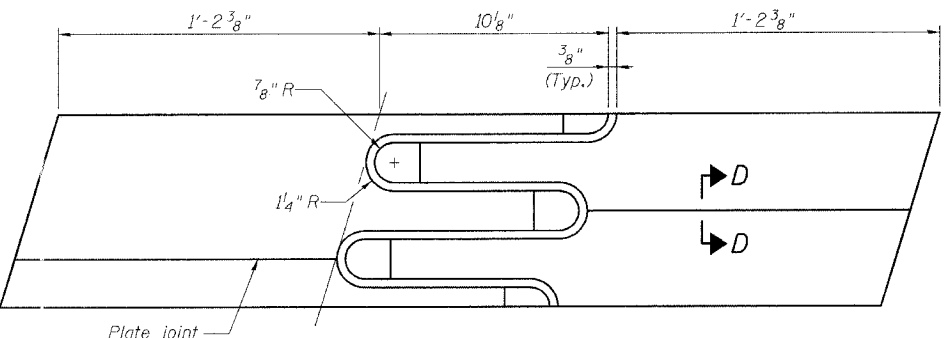
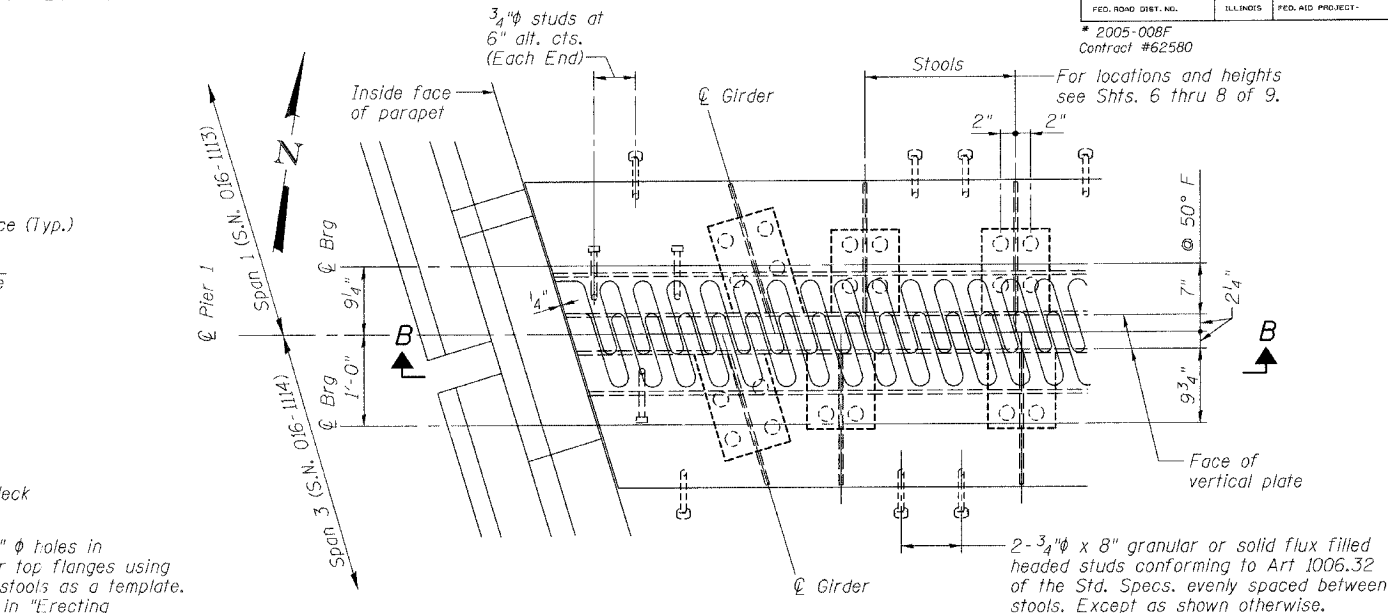
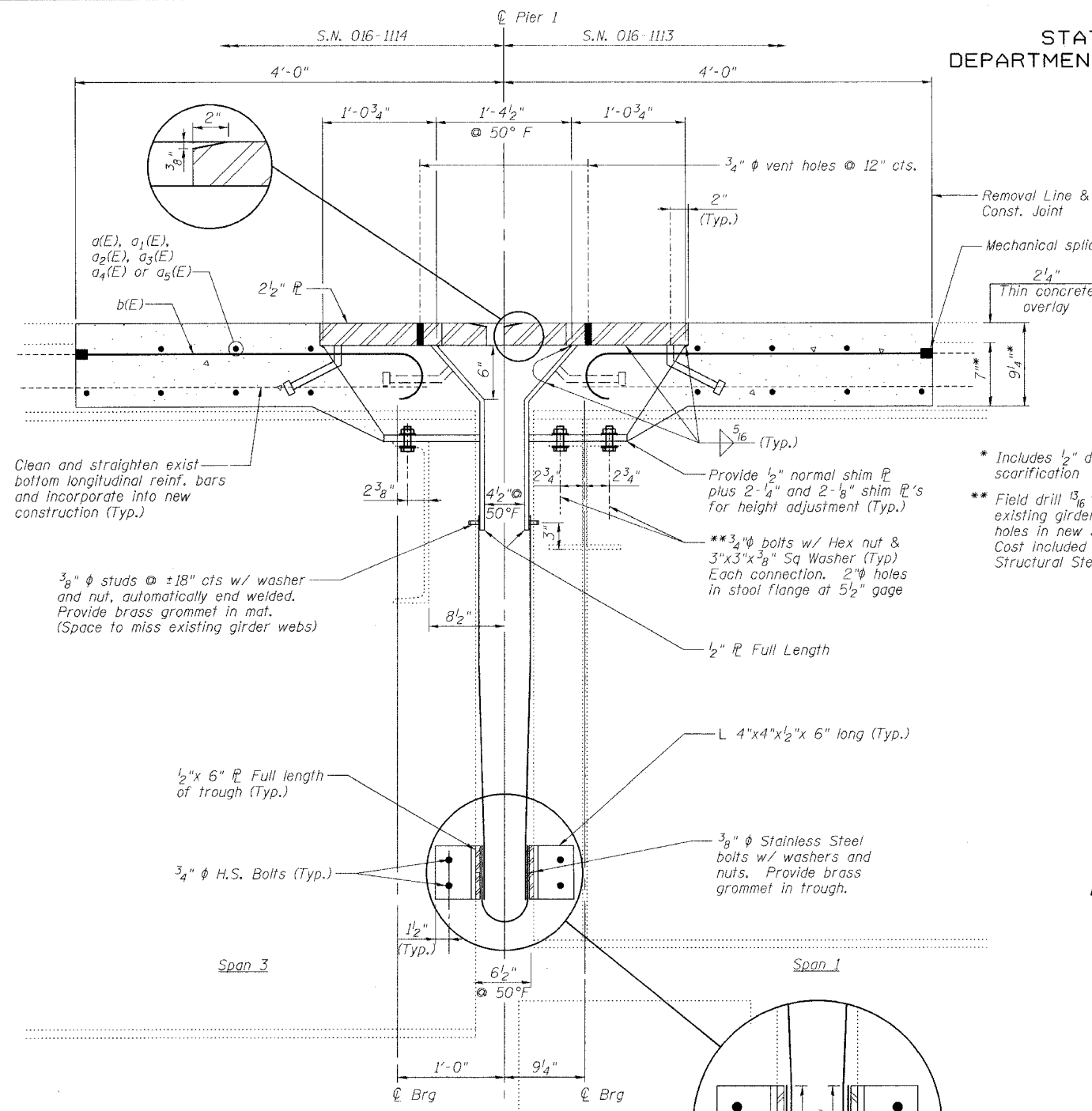
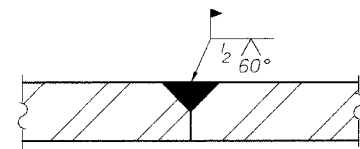


STATE OF ILLINOIS  
DEPARTMENT OF TRANSPORTATION

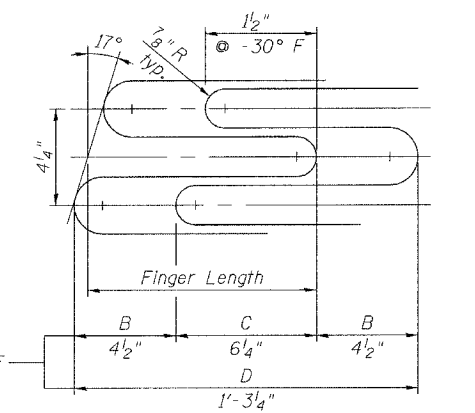
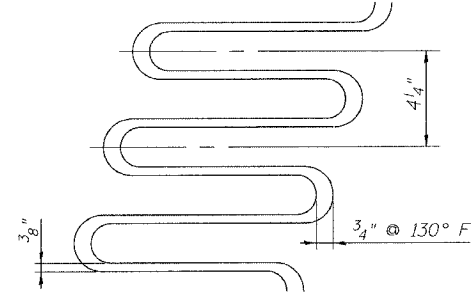
ROUTE NO.	SECTION	COUNTY	TOTAL SHEETS	SHEET NO.	SHEET NO.
FAI 90/94	*	COOK	419	206	9 SHEETS
FED. ROAD DIST. NO.	ILLINOIS	FED. AID PROJECT			
* 2005-008F Contract #62580					



FLAME CUTTING DIAGRAM  
(Proposed Finger  $\bar{r}$  - Cut from  $2\frac{1}{2} \times 3'-1\frac{13}{16} \bar{r}$ )



SECTION D-D



FINGER DETAIL  
Finger Length =  $10\frac{1}{8} \bar{r}$   
Weld Length =  $12\frac{1}{4} \bar{r}$   
Weld Size =  $\frac{5}{16} \bar{r}$   
Expansion length = 477.4"

NOTES

- The Contractor shall bolt the Stools of the Fingerplate Joint Assembly to the top of existing girders, as shown in Section A-A of this drawing.
- Stainless steel bolts, washers and nuts shall meet the requirements of ASTM A193.
- The installation of all necessary hardware, stainless steel bolts, studs and washers, plates and angles shall be included with "Erecting Structural Steel".
- For Section B-B, see Sheet 5 of 9.

REVISIONS	
NAME	DATE

ILLINOIS DEPARTMENT OF TRANSPORTATION  
**PIER 1 JOINT DETAILS**  
F.A.I. ROUTE 90/94 NORTHBOUND (DAN RYAN EXPRESSWAY)  
OVER SOUTH BRANCH - CHICAGO RIVER  
COOK COUNTY  
S.N. 016-1113 - PIER 1

SCALE: VERT. \_\_\_\_\_  
HORIZ. \_\_\_\_\_  
DATE: 3/22/05

DRAWN BY: LANDREY  
DESIGNED BY: SANFORD  
CHECKED BY: \_\_\_\_\_

COMPUTER FILE NO.  
04286-W01-NB-FPJ  
PROJECT 04286-W01  
8/3/05-MML

GREENE & BRADFORD, INC.  
OF SPRINGFIELD  
CONSULTING ENGINEERS  
INCORPORATED  
PROFESSIONAL ENGINEERS AND ARCHITECTS  
201 W. WASHINGTON ST., 11TH FLOOR, CHICAGO, ILL. 60601  
TEL: 312.467.5000 FAX: 312.467.5001 WWW: GREENE-AND-BRADFORD.COM

FILE NAME = \$FILE\$  
PLOT SCALE = \$PLOTSCALE\$  
PLOT DATE = 8/3/2005 9:45:53 AM  
OPERATOR = michelie