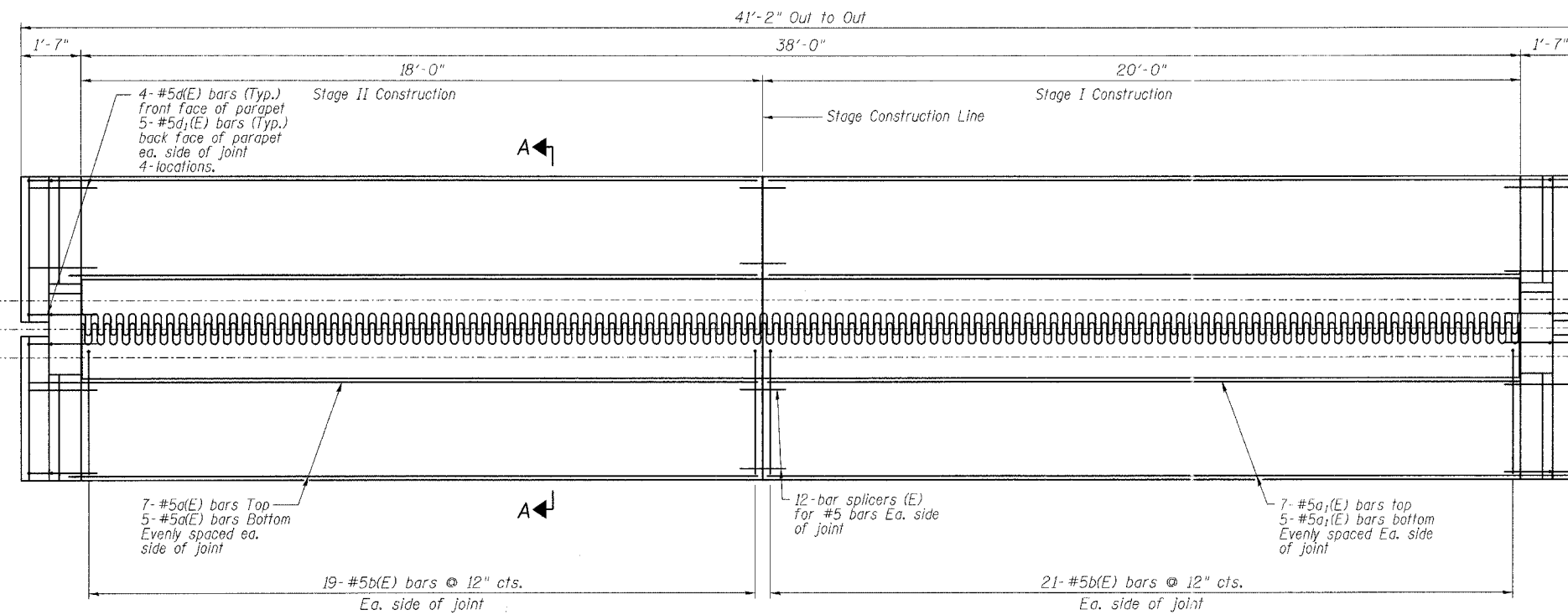


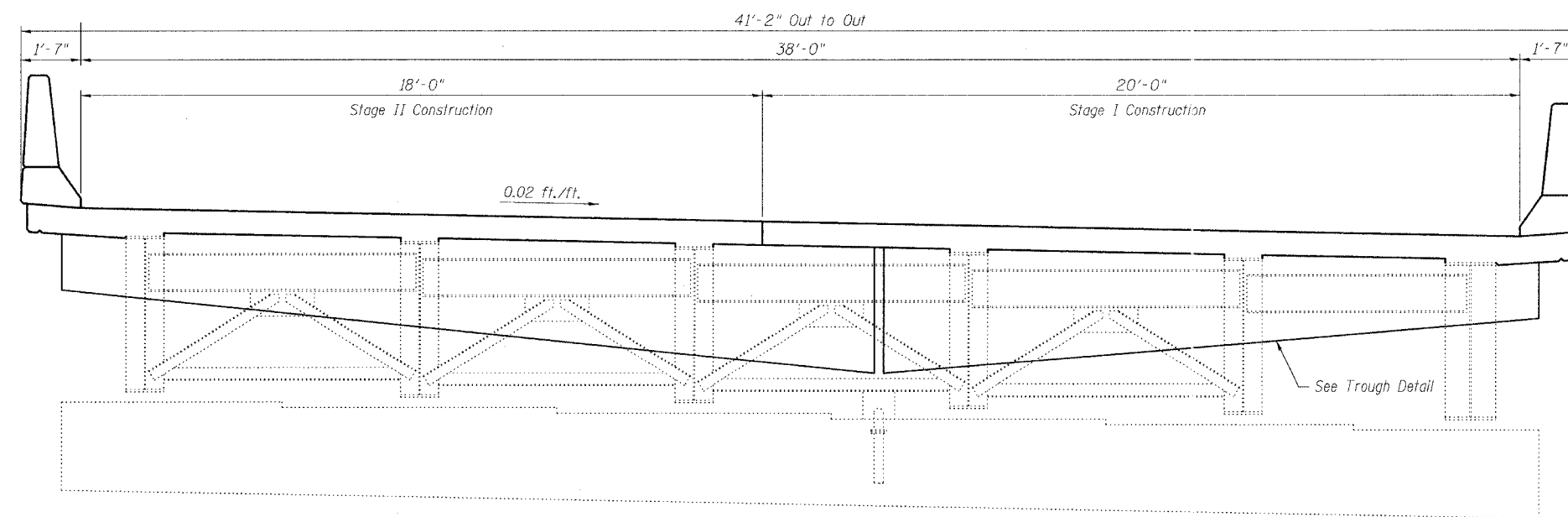
STATE OF ILLINOIS  
DEPARTMENT OF TRANSPORTATION

ROUTE NO.	SECTION	COUNTY	TOTAL SHEETS	SHEET NO.
FA1 90/94	*	COOK	419	222
FED. ROAD DIST. NO.	ILLINOIS	FED. AID PROJECT		
* 2005 - 008F Contract #62580				

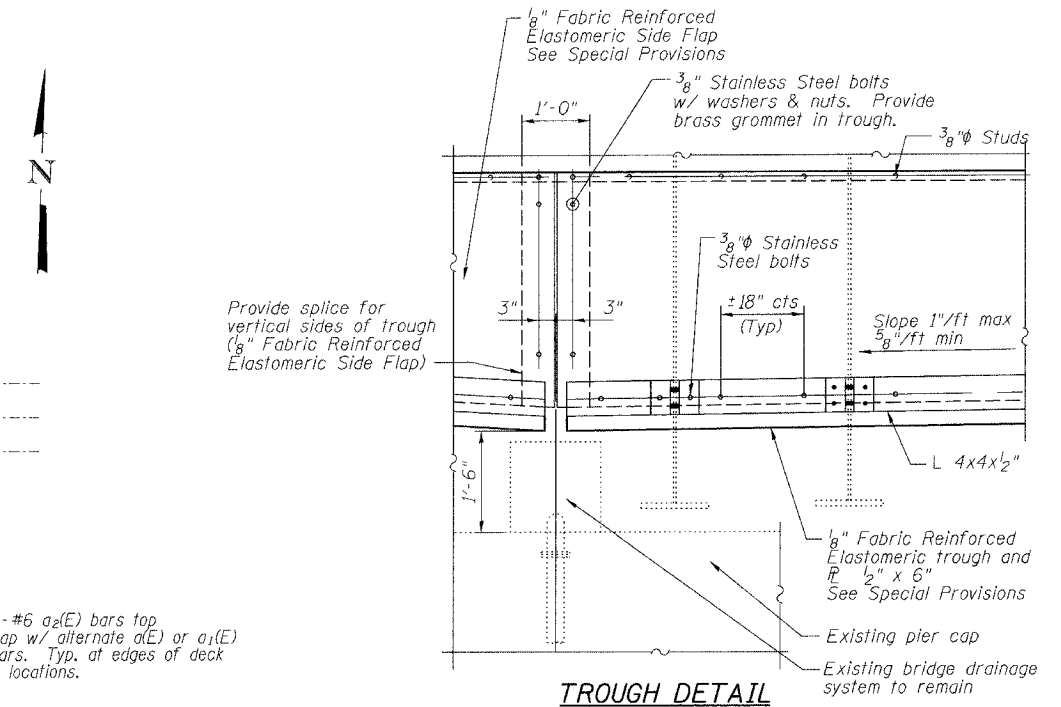
SHEET NO. 3  
8 SHEETS



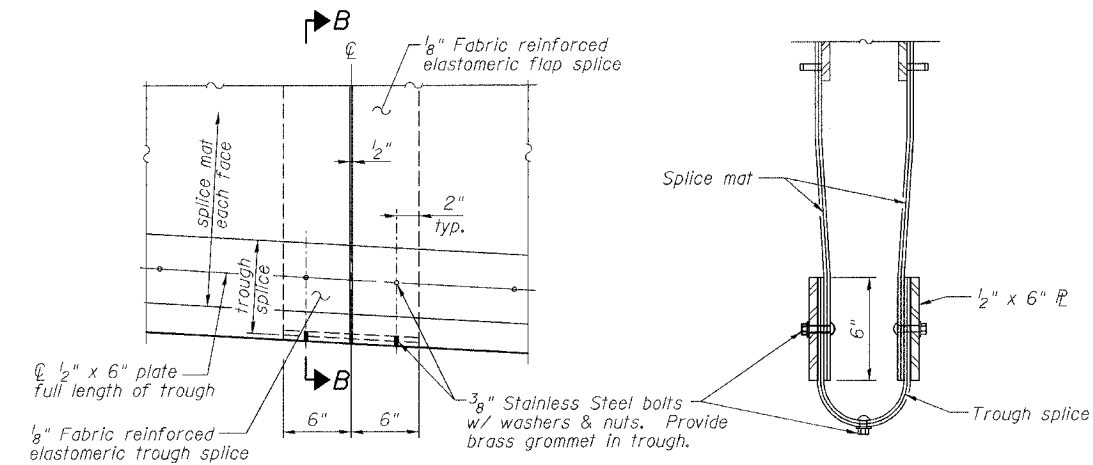
GIRDER LAYOUT AT PIER C10



ELEVATION AT PIER C10 (LOOKING NORTH)



TROUGH DETAIL



TROUGH SPLICE DETAIL

SECTION B-B

- Notes:
- For Parapet Details and Superstructure Bill of Material, see Sheet 5 of 8.
  - For Section A-A, see Sheet 4 of 8.

ILLINOIS DEPARTMENT OF TRANSPORTATION  
**PIER C10 JOINT DETAILS**  
F.A.L. ROUTE 90/94 NORTHBOUND (DAN RYAN EXPRESSWAY)  
OVER SOUTH BRANCH - CHICAGO RIVER  
COOK COUNTY  
S.N. 016-1113 - PIER C10

REVISIONS	
NAME	DATE

VERT. SCALE: HORIZ.  
DATE: 2/17/05  
DRAWN BY: HEBERLING  
DESIGNED BY: SANFORD  
CHECKED BY:   
GREENE & BRADFORD, INC.  
OF SPRINGFIELD  
REGISTERED PROFESSIONAL ENGINEERS  
ILLINOIS LICENSE NO. 021-00000000  
PROFESSIONAL SEAL: SEE FILE #62580-008F  
1275 W. 84th St., Suite 100, Chicago, IL 60643  
COMPUTER FILE NO.  
04286-W04-PJ1  
PROJECT 04286-W04  
8/3/05-MML

FILE NAME = sfiles  
PLOT SCALE = splotscale\$ DRV = splotters  
PLOT DATE = 8/3/2005  
PLOT TIME = 9:47:17 AM  
OPERATOR = michelb1