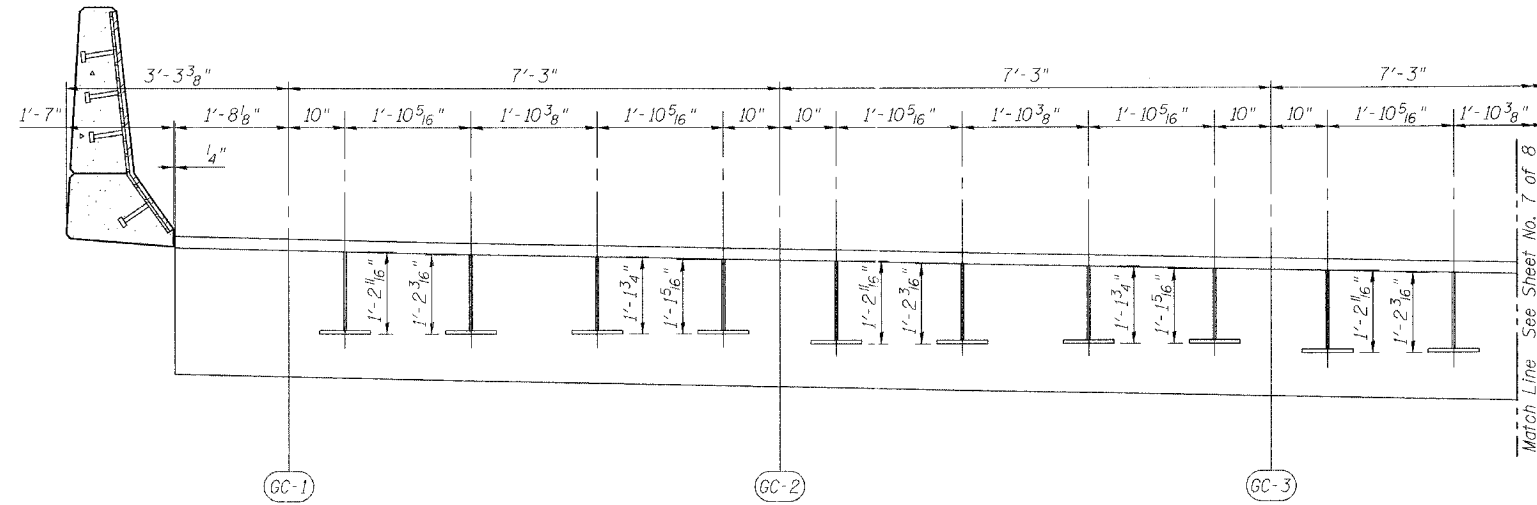


STATE OF ILLINOIS
DEPARTMENT OF TRANSPORTATION

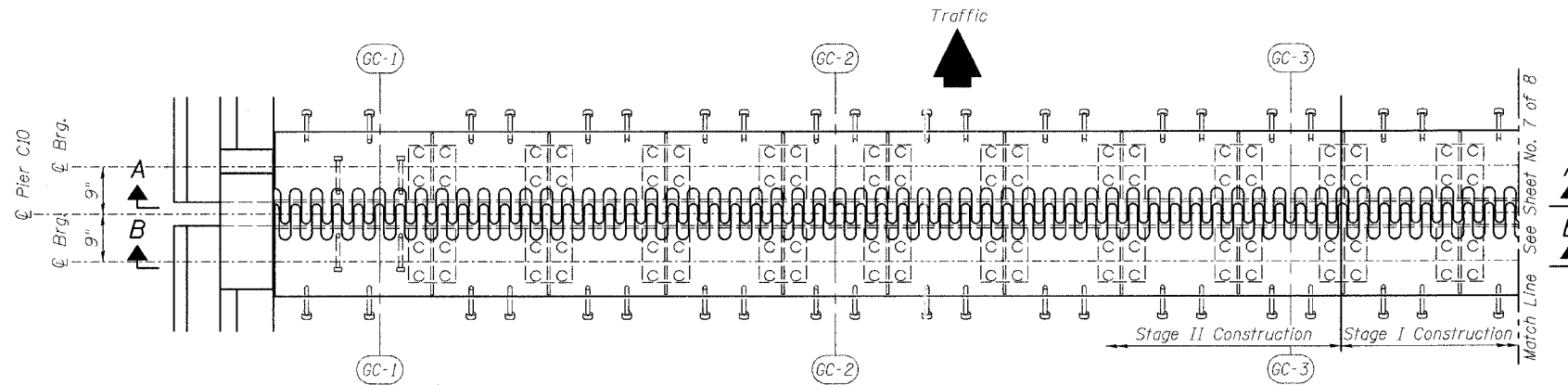
ROUTE NO.	SECTION	COUNTY	TOTAL SHEETS	SHEET NO.
FAI 90/94	*	COOK	419	225
FED. ROAD DIST. NO.	BLINDS	FED. AID PROJECT		

SHEET NO. 6
8 SHEETS

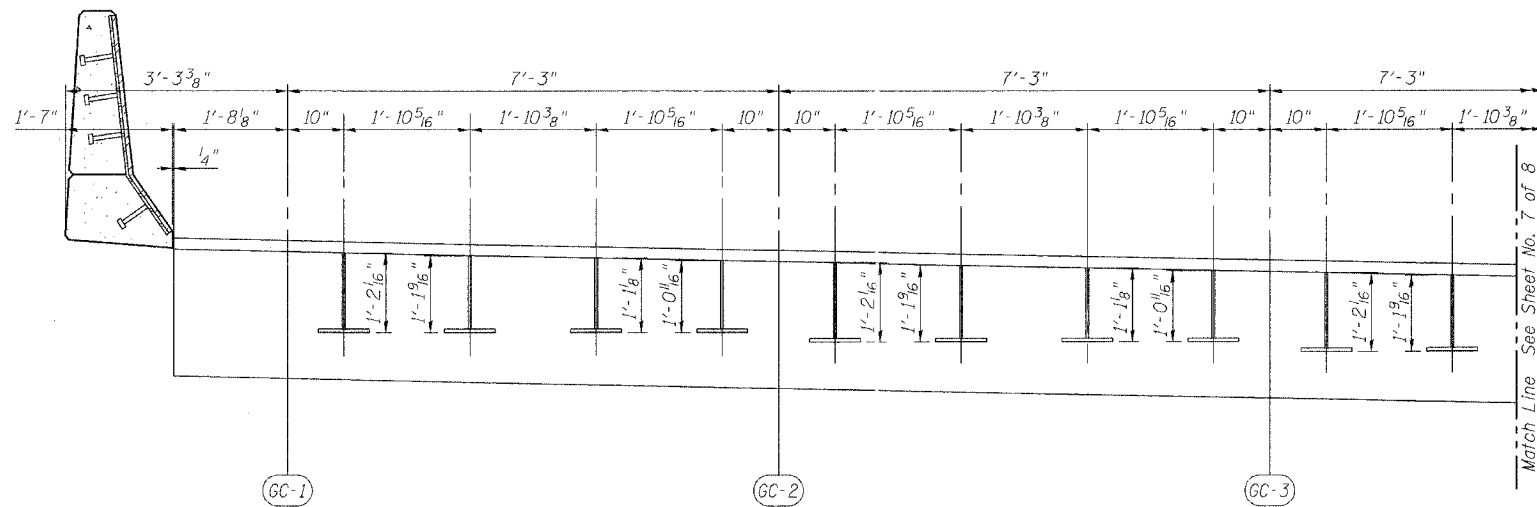
* 2005 - 008F
Contract #62580



SECTION A-A
(Dimensions are along \bar{C} Pier)



PLAN OF FINGER PLATE AT PIER 2



SECTION B-B
(Dimensions are along \bar{C} Pier)

REVISIONS	
NAME	DATE

ILLINOIS DEPARTMENT OF TRANSPORTATION
FINGER PLATE PLAN AND ELEVATION

F.A.I. ROUTE 90/94 NORTHBOUND (DAN RYAN EXPRESSWAY)
OVER SOUTH BRANCH - CHICAGO RIVER
COOK COUNTY
S.N. 016-1113 - PIER C10

SCALE: VERT. _____
HORIZ. _____
DATE: 2/17/05

DRAWN BY: HEBERLING
DESIGNED BY: SANFORD
CHECKED BY: _____

GREENE & BRADFORD, INC.
OF SPRINGFIELD
REGISTERED PROFESSIONAL ENGINEERS
PROFESSIONAL DESIGN FIRM NO. 020-0000
200 S. 8th St., Springfield, IL 62761-1000
COMPUTER FILE NO. 04286-W04-PE1
PROJECT 04286-W04
8/3/05-MML

FILE NAME = \$FILE\$
PLOT SCALE = \$PLOTSCALE\$
PLOT DATE = 8/3/2005
PLOT TIME = 9:47:08 AM
OPERATOR = michellel