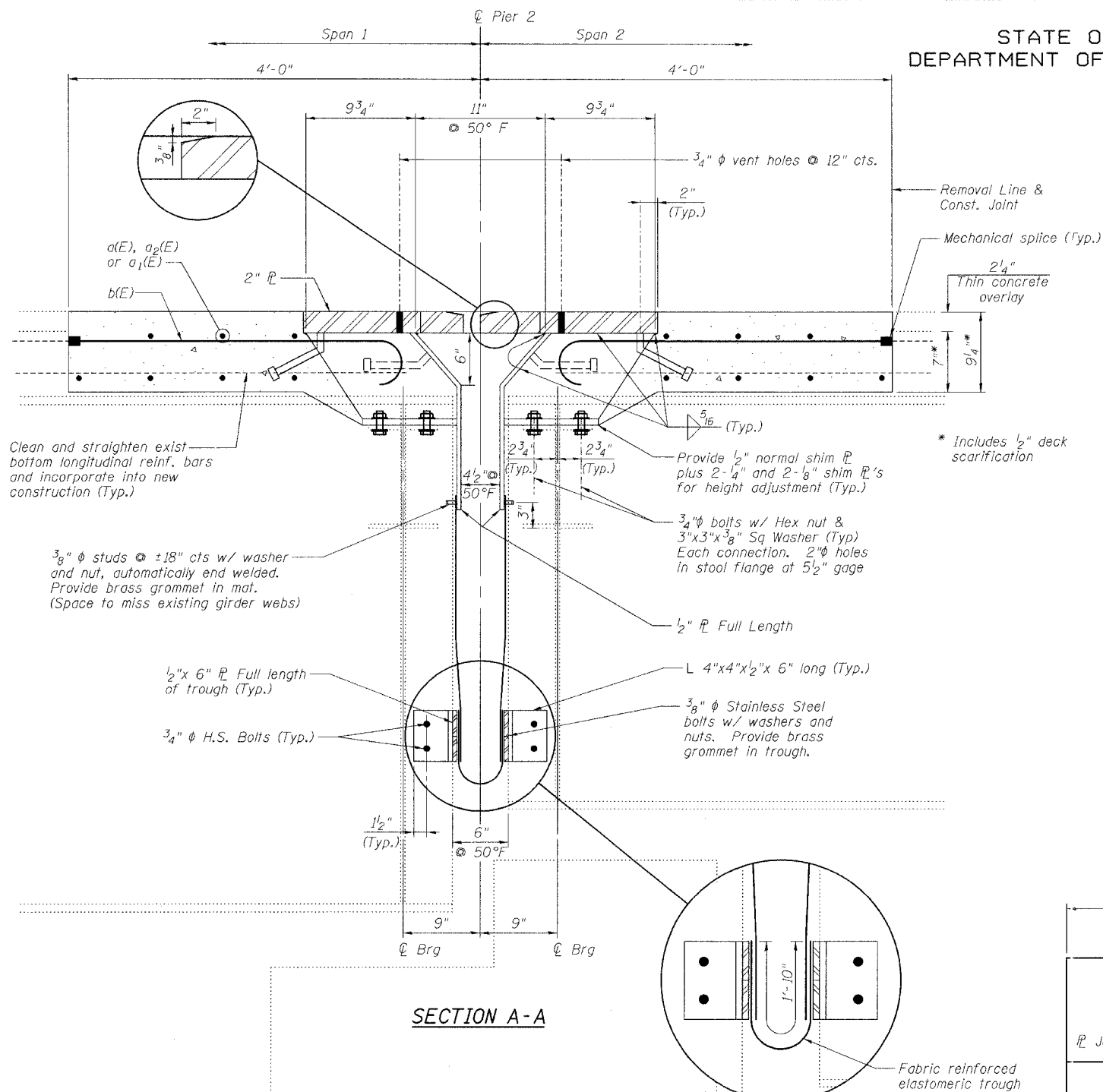


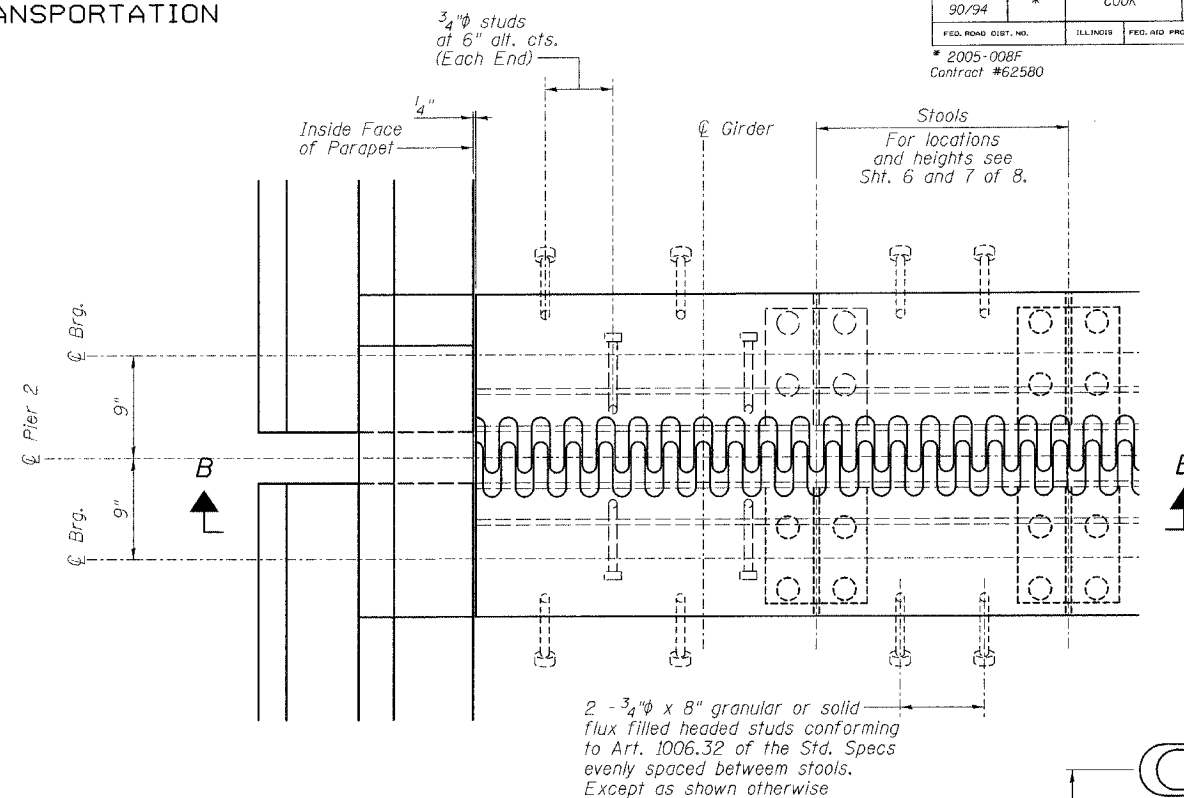
STATE OF ILLINOIS
DEPARTMENT OF TRANSPORTATION

ROUTE NO.	SECTION	COUNTY	TOTAL SHEETS	SHEET NO.
FAI 90/94	*	COOK	419	231
FED. ROAD DIST. NO.		ILLINOIS	FED. AID PROJECT	
* 2005-008F Contract #62580				

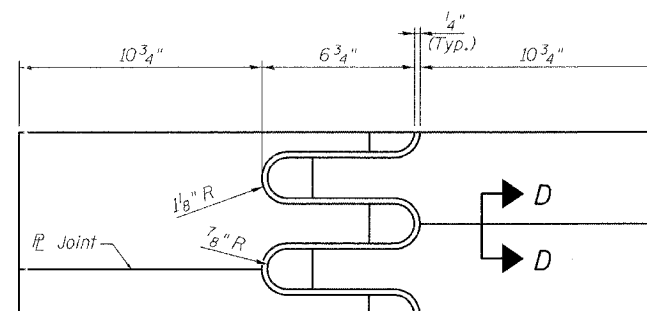
SHEET NO. 4
8 SHEETS



SECTION A-A

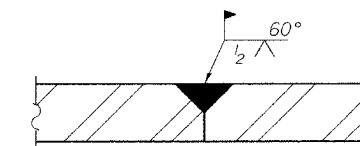


PLAN

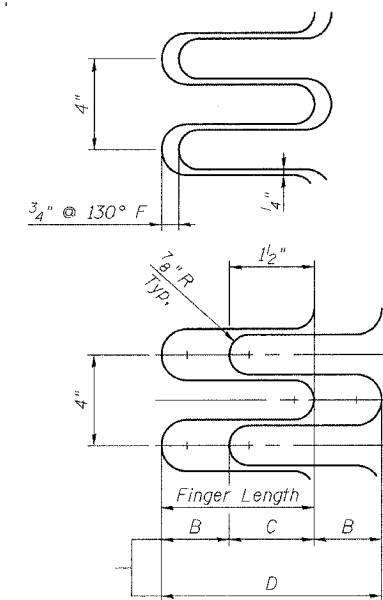


FLAME CUTTING DIAGRAM

(Proposed Finger φ - Cut from 2" x 2'-4 1/2" φ)



SECTION D-D



FINGER DETAIL

Finger Length = 6 3/4"
Weld Length = 9 3/4"
Weld Size = 5/16"
Expansion Length = 359.4'

NOTES

1. Stainless steel bolts, washers and nuts shall meet the requirements of ASTM A193.
2. The installation of all necessary hardware, stainless steel bolts, studs and washers, plates and angles shall be included with "Erecting Structural Steel".
3. For Section B-B, see Sheet 5 of 8.

REVISIONS		
NAME	DATE	

ILLINOIS DEPARTMENT OF TRANSPORTATION

PIER 2 JOINT DETAILS

F.A.I. ROUTE 90/94 NORTHBOUND (DAN RYAN EXPRESSWAY)
16TH STREET TO 18TH STREET
COOK COUNTY
S.N. 016-1111 - PIER 2

SCALE: VERT.
HORIZ.
DATE: 3/28/05

GREENE & BRADFORD, INC.
OF SPRINGFIELD
CONSULTING ENGINEERS
PROFESSIONAL DESIGN FIRM NO. 00078
REGISTERED PROFESSIONAL ENGINEERS
ILLINOIS LICENSE NO. 00078-0001
800 755-8844 618 755-4227 FAX 618 755-4228

DRAWN BY: LANDREY
DESIGNED BY: SANFORD
CHECKED BY: -

COMPUTER FILE NO.
04286-W05-NB-FPJ
PROJECT 04286-W05
8/3/05-MML