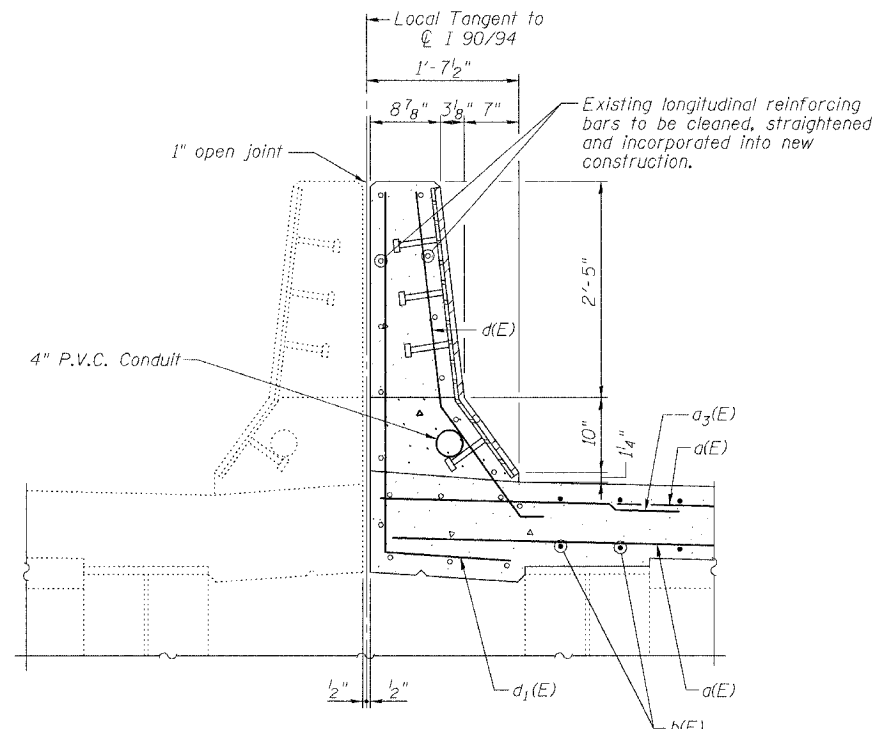


STATE OF ILLINOIS
DEPARTMENT OF TRANSPORTATION

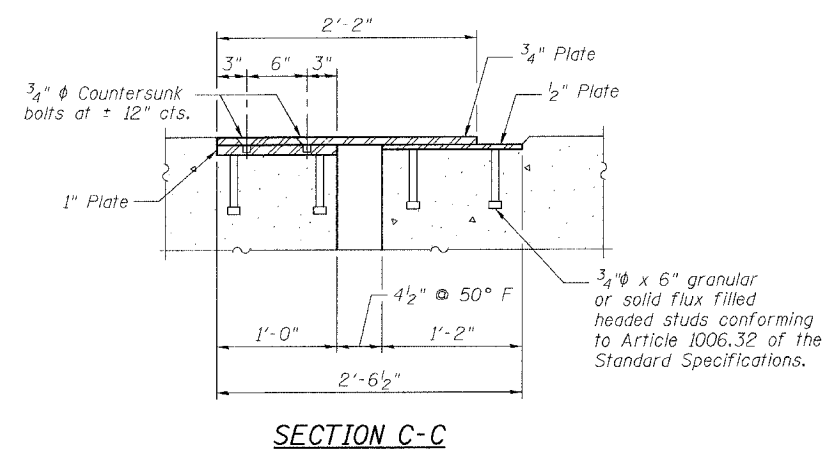
| | | | | |
|---------------------|----------|------------------|--------|----------|
| ROUTE NO. | SECTION | COUNTY | SHEETS | # SHEETS |
| FA1 90/94 | * | COOK | 48 | 232 |
| FED. ROAD DIST. NO. | ILLINOIS | FED. AID PROJECT | | |

* 2005-008F
Contract #62580

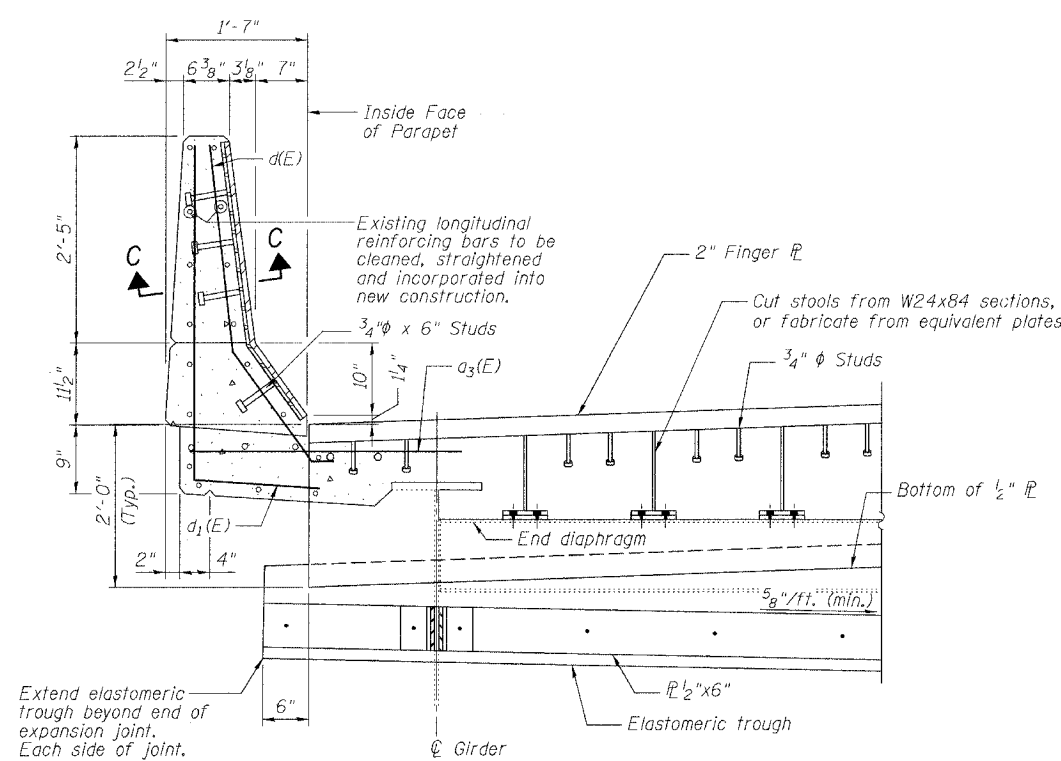
SHEET NO. 5
8 SHEETS



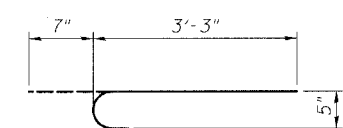
DETAIL AT MEDIAN PARAPET
(Looking North)



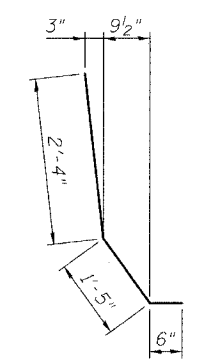
SECTION C-C



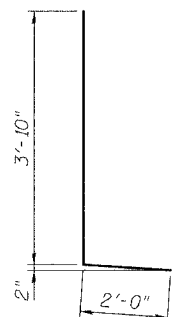
SECTION B-B
(For location of Section B-B, See Sheet 4 of 8)



BAR b(E)



BAR d(E)



BAR d1(E)

BILL OF MATERIAL

| Bar | No. | Size | Length | Shape |
|----------------------------------|-----|---------|--------|-------|
| d(E) | 24 | #5 | 30'-6" | — |
| a1(E) | 24 | #5 | 35'-6" | — |
| a2(E) | 16 | #6 | 4'-6" | — |
| b(E) | 134 | #5 | 3'-10" | U |
| d(E) | 16 | #5 | 4'-3" | — |
| d1(E) | 20 | #5 | 5'-10" | — |
| Reinforcement Bars, Epoxy Coated | | Pound | 2490 | |
| Concrete Superstructure | | Cu. Yd. | 17.6 | |
| Concrete Removal | | Cu. Yd. | 14.7 | |
| Bar Splicers | | Each | 24 | |
| Mechanical Splice | | Each | 134 | |

Reinforcing bars designated (E) shall be epoxy coated.

ILLINOIS DEPARTMENT OF TRANSPORTATION
PARAPET DETAILS
F.A.I. ROUTE 90/94 NORTHBOUND (DAN RYAN EXPRESSWAY)
16TH STREET TO 18TH STREET
COOK COUNTY
S.N. 016-1111 - PIER 2

| REVISIONS | |
|-----------|------|
| NAME | DATE |
| | |
| | |
| | |
| | |

SCALE: VERT. DRAWN BY: LANDREY
DATE: 3/28/05 DESIGNED BY: SANFORD
CHECKED BY: -

GREENE & BRADFORD, INC.
CONSULTING ENGINEERS
300 WEST WASHINGTON STREET
CHICAGO, ILLINOIS 60601
OFFICES: 1111 N. LAUREL, CHICAGO, ILLINOIS 60610
401 THE BOWL, 200 THE LOOP, CHICAGO, ILLINOIS 60601

COMPUTER FILE NO.
04286-W05-NB-PD
PROJECT 04286-W05
6/28/05-MML

FILE NAME = \$FILE\$
PLOT SCALE = \$PLOTSCALE\$
PLOT DATE = 8/3/2005
PLOT TIME = 10:55:54 AM
OPERATOR = michiel