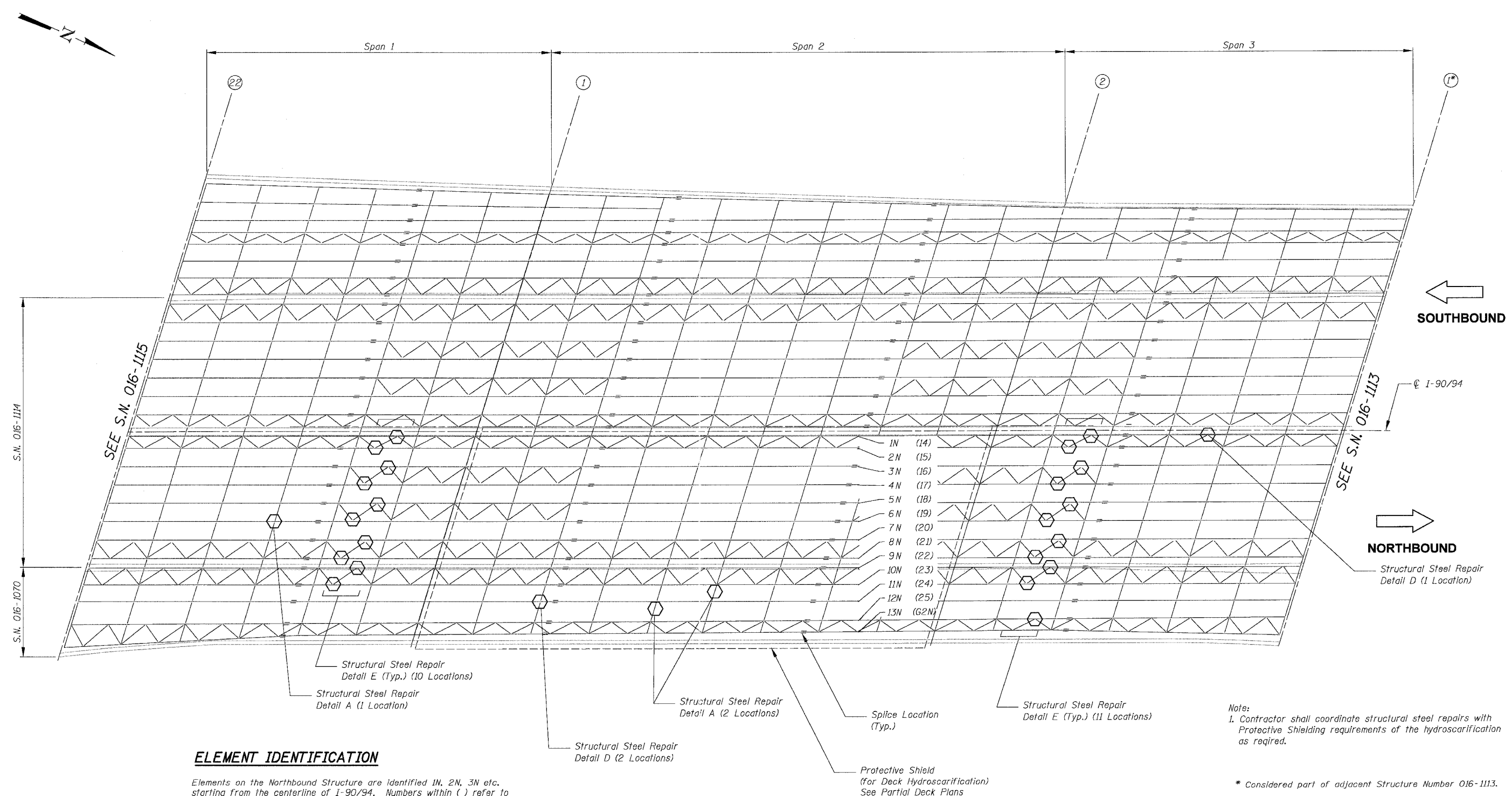


F.A.I.	SECTION	COUNTY	TOTAL SHEETS	SHEET NO.
94/90	2003-02BF	COOK	419	239
STA.	TO STA.			
FED. ROAD DIST. NO.	ILLINOIS	FED. AID PROJECT		
62580				



ELEMENT IDENTIFICATION

Elements on the Northbound Structure are identified 1N, 2N, 3N etc. starting from the centerline of I-90/94. Numbers within () refer to as-built beam designations.

① = Pier No.

⬡ Location of Structural Steel Repair

□ Location of Protective Shield

SN 016-1114 & 016-1070 FRAMING PLAN

Note:
1. Contractor shall coordinate structural steel repairs with Protective Shielding requirements of the hydroscarification as required.

* Considered part of adjacent Structure Number 016-1113.

REVISIONS	
NAME	DATE

ILLINOIS DEPARTMENT OF TRANSPORTATION
F.A.I. 94/90 (DAN RYAN EXPRESSWAY)
NB DAN RYAN ELEVATED BRIDGE
REPAIR FROM 15TH TO 28TH STREETS
PARTIAL FRAMING PLAN
S.N. 016-1114 & 016-1070

SCALE: NTS
DATE: 7/22/2005
DRAWN BY: BDC
CHECKED BY: BLU

BOWMAN, BARRETT & ASSOCIATES INC
CONSULTING ENGINEERS
Chicago, Illinois
312.228.0100
www.bbainc.com



7/22/2005 3:56:47 PM