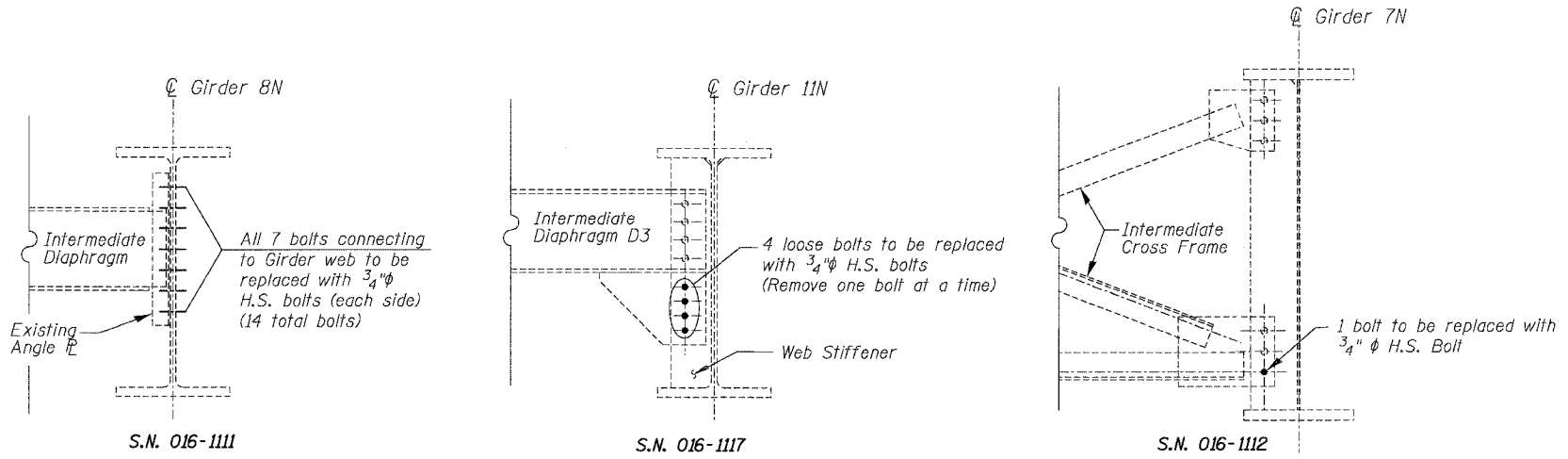
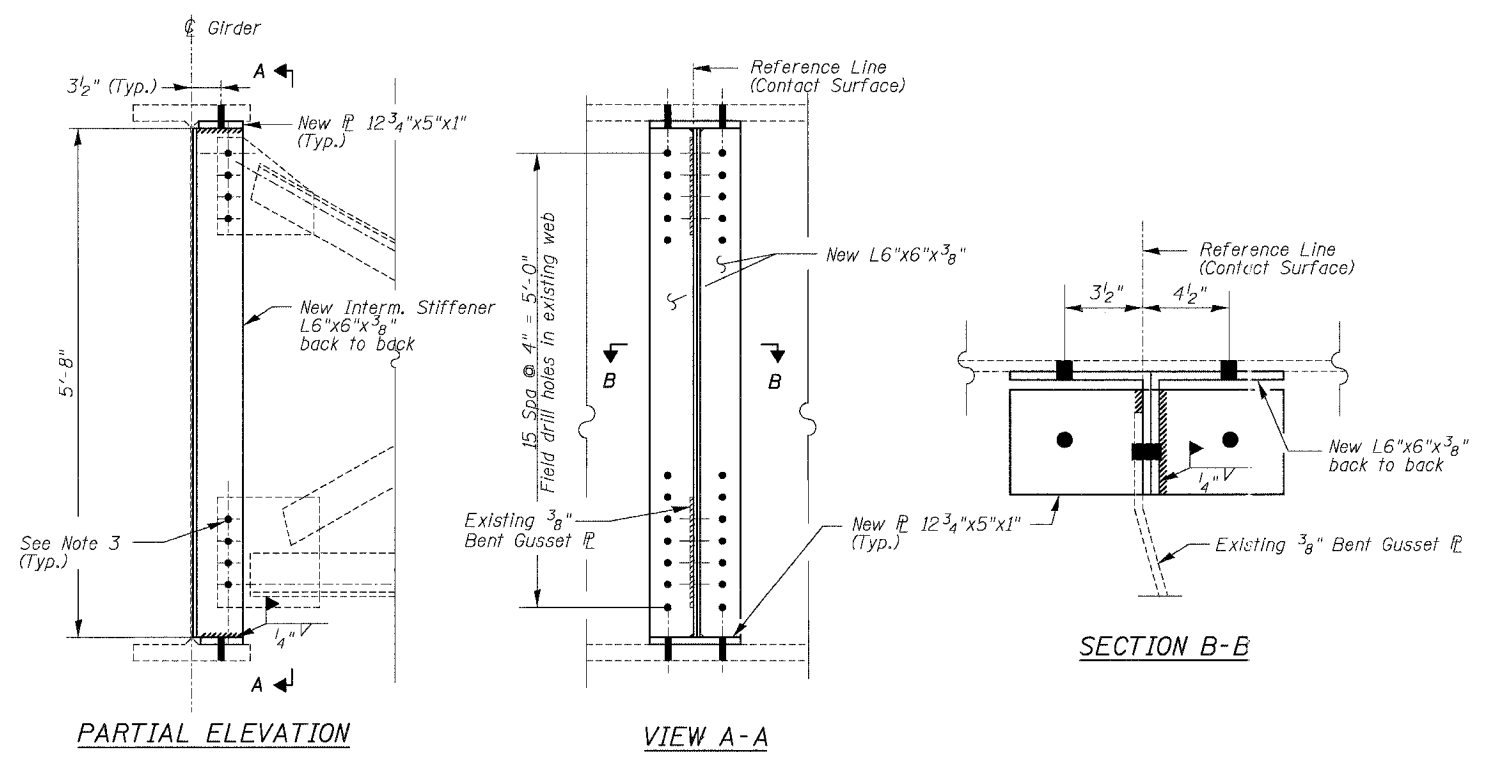
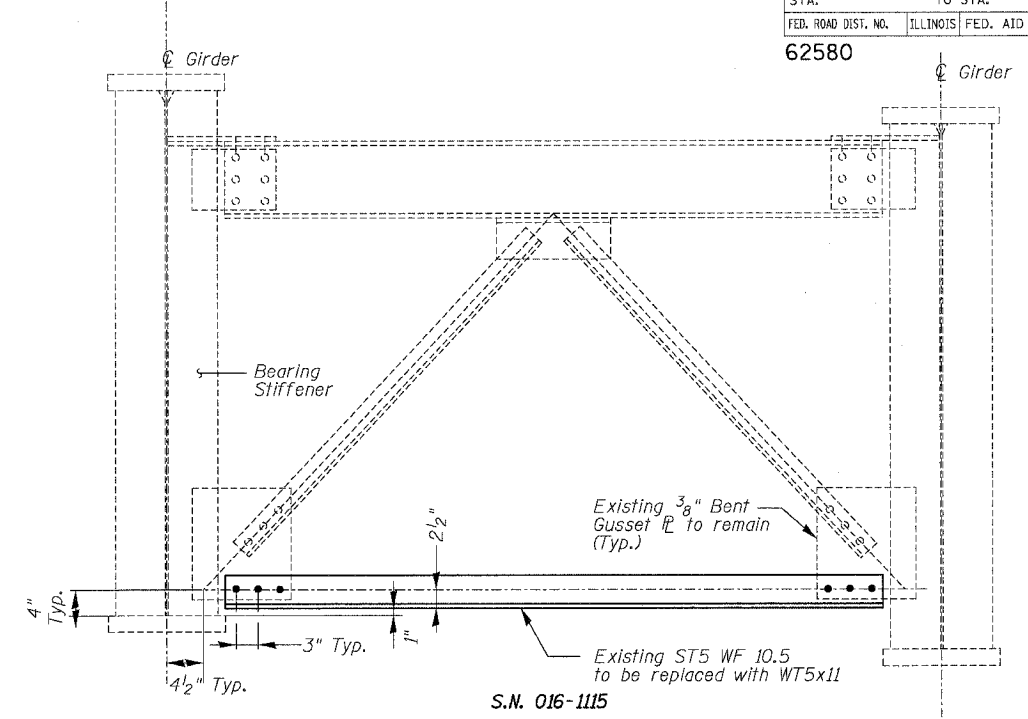


62580



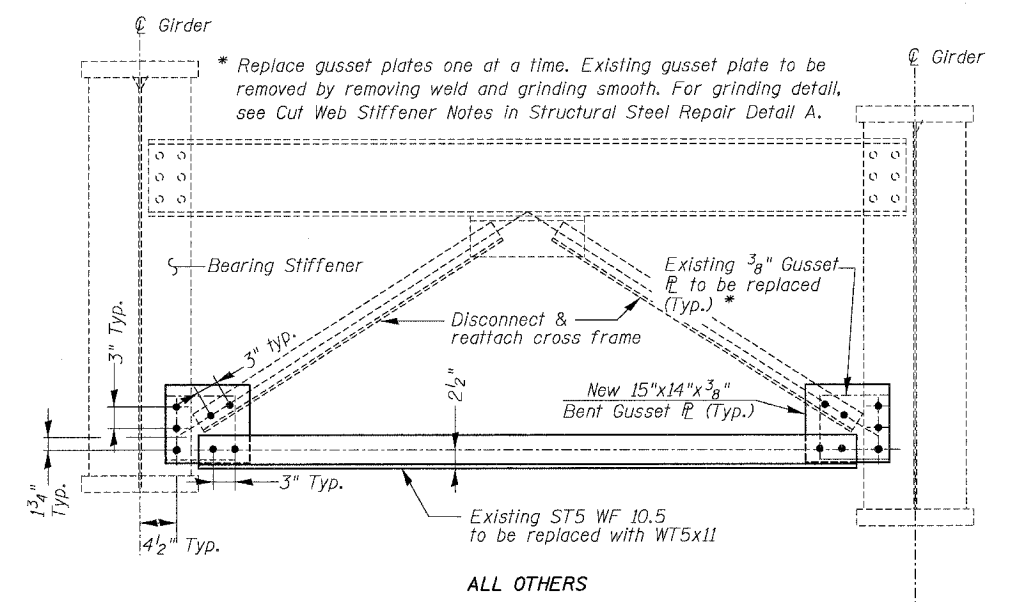
Notes: This work at S.N. 016-1117 shall require temporary sidewalk closure in accordance with Highway Standard 701801.

**DETAIL B BOLT REPLACEMENT**  
(Looking North)



**DETAIL D STIFFENER REPLACEMENT**

- Notes:
1. Remove existing stiffener prior to install new bolted stiffener. See Structural Steel Repair Detail A for Cut Web Stiffener Detail.
  2. New stiffener to be vertical & 90 degrees to web.
  3. For gusset plate connections, bolt holes shall be field drilled to match existing locations or as directed by Engineer. For location where gusset plate is not present (S.N. 016-1114, Girder 1N of Span 3), no connection bolt and hole is required.



**DETAIL F BRACING MEMBER REPLACEMENT**

Notes: This replacement work shall require temporary lane closure of South Canal Street in accordance with Highway Standard 701501.

**BILL OF MATERIAL**

Item	Unit	Quantity
Structural Steel Repair	Pound	1,380

REVISIONS	
NAME	DATE

ILLINOIS DEPARTMENT OF TRANSPORTATION  
 F.A.I. 94/90 (DAN RYAN EXPRESSWAY)  
 NB DAN RYAN ELEVATED BRIDGE  
 REPAIR FROM 15TH TO 28TH STREETS  
 STRUCTURAL STEEL REPAIR  
 DETAILS B, D & F

SCALE: NTS  
 DATE: 7/22/2005

DRAWN BY: BDC  
 CHECKED BY: BLU