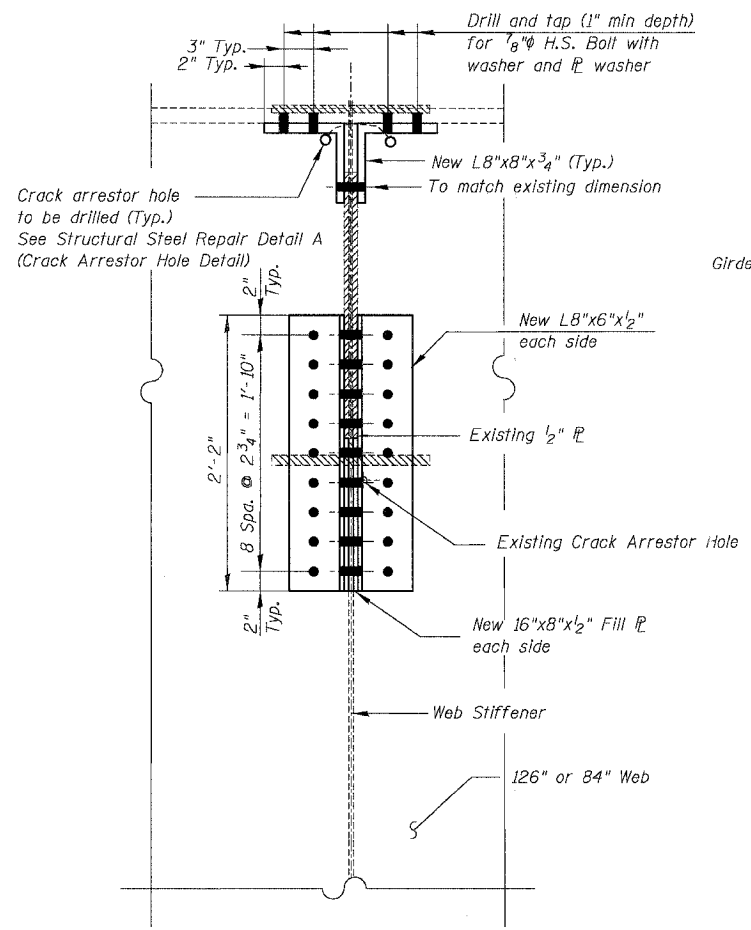


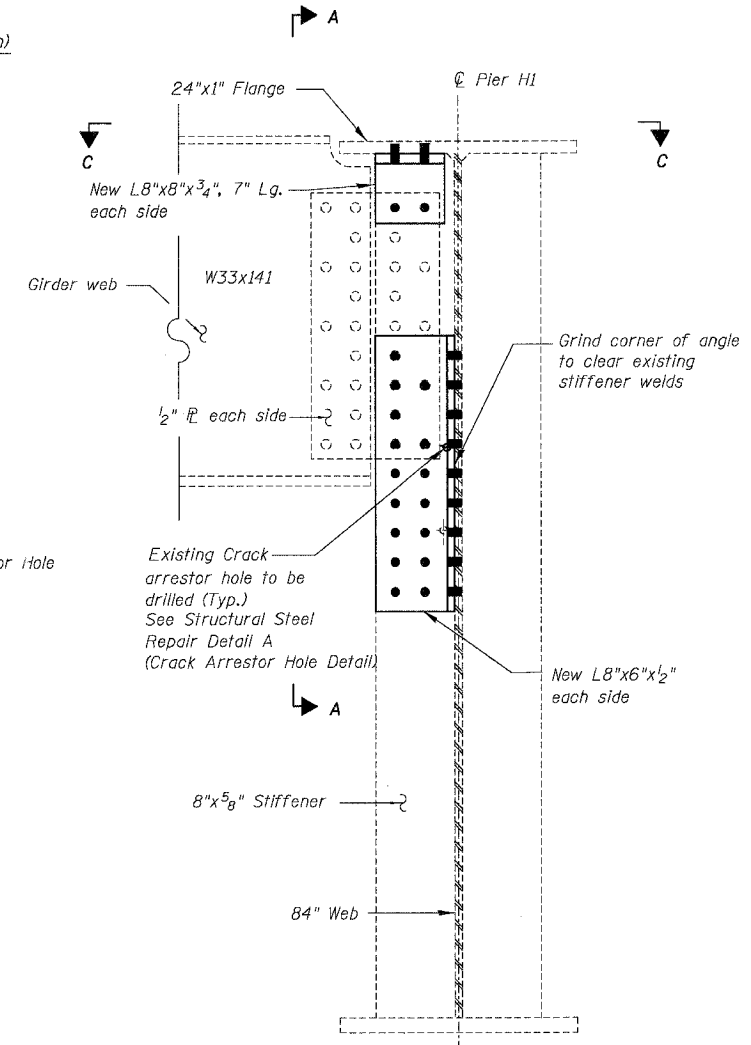
PARTIAL ELEVATION
(S.N. 016-1117)



SECTION A-A

SUPPORTING REACTIONS & MINIMUM JACKING CAPACITY

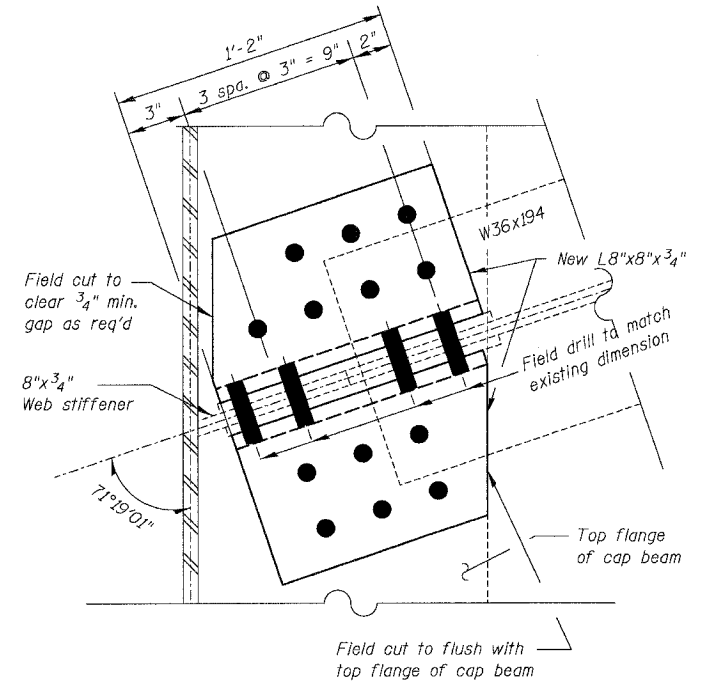
S/N	Pier	$DL + \frac{1}{2}(LL+I)$ (k)	Min. Jack. Capacity (k)
016-1117	19	74	115
016-1118	H1	124	190



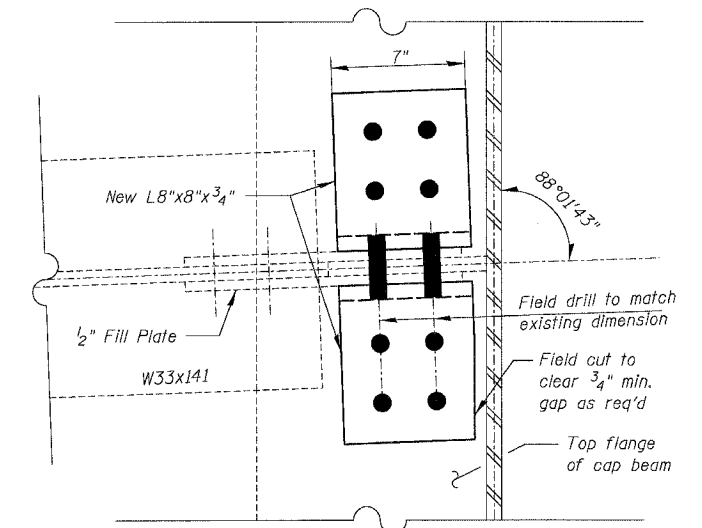
PARTIAL ELEVATION
(S.N. 016-1118)

BILL OF MATERIAL

Item	Unit	Quantity
Structural Steel Repair	Pound	895
Temporary Shoring & Cribbing	Each	2



VIEW B-B
(Looking through top flange)



VIEW C-C
(Looking through top flange)

- Notes:
1. All H.S. bolts for this repair work shall be $\frac{7}{8}$ " ϕ .
 2. Prior to removal of any existing bolts, girder to be repaired shall be temporarily supported (see Table for Support Reactions & min. Jacking Capacity, and see Special Provision for Temporary Shoring and Cribbing).
 3. Drill a crack arrester hole where a crack is present without a arrester hole at crack tip (see Detail A for Crack Arrester Hole Detail). Cost shall be included in "Structural Steel Repair".
 4. This work at S.N. 016-1117 shall require temporary sidewalk closure on the corner of Princeton Avenue and 26th Street, in accordance with Highway Standard 701801.

DETAIL I FATIGUE RETROFIT TYPE II REPAIR

BOWMAN, BARRETT & ASSOCIATES INC
CONSULTING ENGINEERS
Chicago, Illinois
312.228.0100
www.bbainc.com

REVISIONS	NAME	DATE

ILLINOIS DEPARTMENT OF TRANSPORTATION
F.A.I. 94/90 (DAN RYAN EXPRESSWAY)
NB DAN RYAN ELEVATED BRIDGE
REPAIR FROM 15TH TO 28TH STREETS
STRUCTURAL STEEL REPAIR
DETAIL I

SCALE: NTS
DATE: 8/12/2005

DRAWN BY: BDC
CHECKED BY: BLU

11/5/05