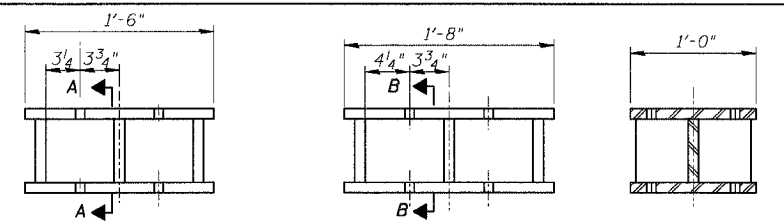


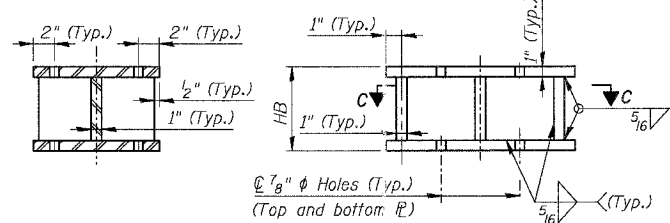
F.A.I.	SECTION	COUNTY	TOTAL SHEETS	SHEET NO.
94/90	2003-028F	COOK	419	251
STA.	TO STA.			
FED. ROAD DIST. NO.	ILLINOIS	FED. AID PROJECT		
62580				



**TYPE A**  
20 REQ'D

**TYPE B**  
38 REQ'D

**SECTION A-A**  
TYPE A, D, E



**TYPICAL SIDE VIEW**

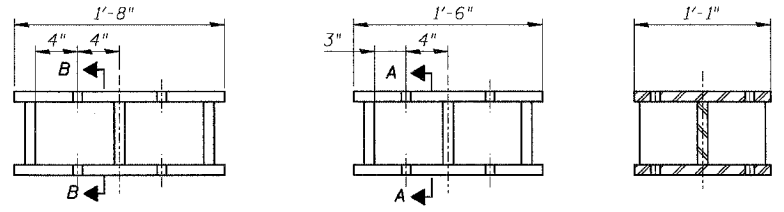
**TYPICAL ELEVATION**

**STEEL EXTENSION TYPE SCHEDULE S/N 016-0137**

PIER NO.	BEAM NO.											
22	21	20	19	18	17	16	15	14	13	12		
8	C	B	B	B	B	B	B	B	B	B	B	B
10	D	A	A	A	A	A	A	A	A	A	A	A
	42	41	40	39	38	37	36	35	34	33		
12	C	B	B	B	B	B	B	B	B	B	B	B
14	C	B	B	B	B	B	B	B	B	B	B	B
	62	61	60	59	58	57	56	55	54	53		
16	E	C	C	C	C	C	C	C	C	C	C	C
	84	83	82	81	80	79	78	77	76	75	74	
20	D	A	A	A	A	A	A	A	A	A	A	A
22	C	B	B	B	B	B	B	B	B	B	B	B

**HB SCHEDULE S/N 016-0137**

PIER NO.	BEAM NO.											
22	21	20	19	18	17	16	15	14	13	12		
8	9 1/16	9 1/16	9 1/16	9 1/16	9 1/16	9 7/8	9 13/16	9 1/16	9 1/16	9 1/16	9 1/16	9 1/16
10	10 1/2	10 1/2	10 1/2	10 1/2	10 1/2	10 1/2	11 1/2	10 1/16	10 1/2	10 1/2		
	42	41	40	39	38	37	36	35	34	33		
12	10 1/16	10 1/16	10 1/16	10 1/16	10 1/16	10 1/16	10 1/4	10 1/16	10 1/16	10 1/16		
14	10 1/16	10 1/16	10 1/16	10 1/16	10 1/16	10 1/16	10 1/4	10 1/16	10 1/16	10 1/16		
	62	61	60	59	58	57	56	55	54	53		
16	10 1/16	10 1/16	10 1/16	10 1/16	10 1/16	10 1/16	10 1/16	10 1/16	10 1/16	10 1/16		
	84	83	82	81	80	79	78	77	76	75	74	
20	10 1/2	10 1/2	10 1/2	10 1/2	10 1/2	11	10 1/2	10 1/2	10 1/2	10 1/2		
22	10 1/16	10 1/16	10 1/16	10 1/16	10 3/16	10 5/16	10 1/16	10 1/16	10 1/16	10 1/16		



**TYPE C**  
13 REQ'D

**TYPE D**  
2 REQ'D

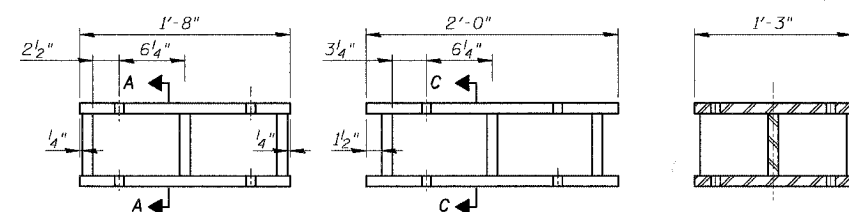
**SECTION B-B**  
TYPE B, C

**STEEL EXTENSION TYPE SCHEDULE S/N 016-1110**

PIER NO.	BEAM NO.											
28	27	26	25	24	23	22	21					
2	I	I	I	I	I	I	I					
	67	66	65	64	63	62	61	60	59	58	57	56
5	F	F	F	F	F	F	F	F	F	F	F	F

**HB SCHEDULE S/N 016-1110**

PIER NO.	BEAM NO.											
28	27	26	25	24	23	22	21					
2	11 7/8	11 7/8	11 7/8	11 7/8	11 7/8	11 7/8	11 7/8					
	67	66	65	64	63	62	61	60	59	58	57	56
5	9 1/16	9 1/16	9 1/16	9 1/16	9 1/16	9 1/16	9 1/16	9 1/16	9 1/16	9 1/16	9 1/16	9 1/16

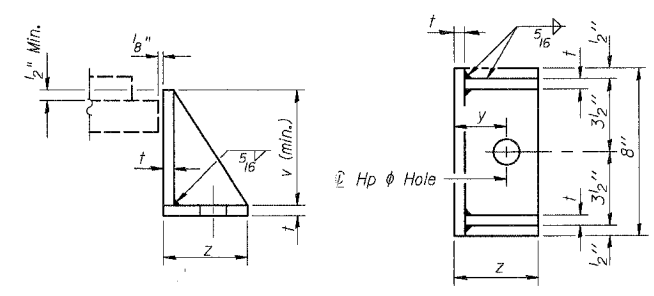


**TYPE E**  
1 REQ'D

**TYPE F**  
13 REQ'D

**SECTION C-C**  
TYPE F

**FABRICATED STEEL EXTENSION DETAILS**



**SIDE RETAINER**

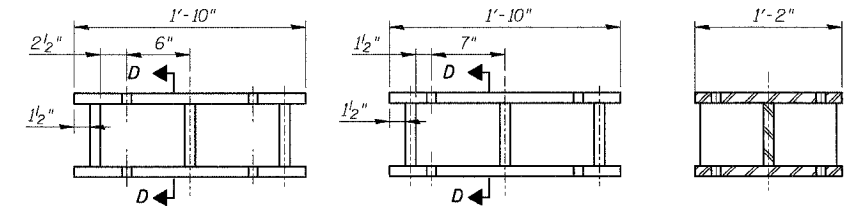
Equivalent rolled angle with stiffeners will be allowed in lieu of welded plates. Weight included with Structural Steel.

**STEEL EXTENSION TYPE SCHEDULE S/N 016-1111**

PIER NO.	BEAM NO.							
3	GR1	GR2	GR3	GR4	GR5	GR6	GR7	GR8
4	G	G	G	G	G	G	G	G
6	G	G	G	G	G	G	G	G
8	G	G	G	G	G	G	G	G
9	G	G	G	G	G	G	G	G
11	G	G	G	G	G	G	G	G

**HB SCHEDULE S/N 016-1111**

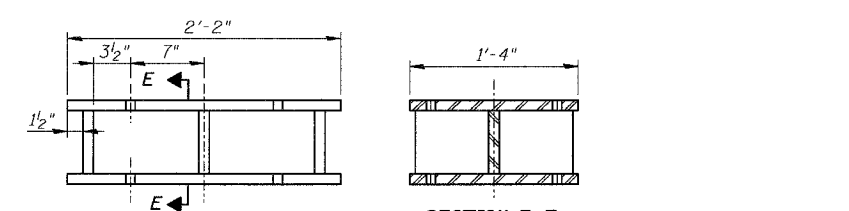
PIER NO.	BEAM NO.							
	GR1	GR2	GR3	GR4	GR5	GR6	GR7	GR8
3	9 7/16	9 7/16	9 7/16	9 7/16	9 7/16	9 7/16	9 7/16	9 7/16
4	11 13/16	11 13/16	11 13/16	11 13/16	11 13/16	11 13/16	11 13/16	11 13/16
6	11 13/16	11 13/16	11 13/16	11 13/16	11 13/16	11 13/16	11 13/16	11 13/16
8	9 7/16	9 7/16	9 7/16	9 7/16	9 7/16	9 7/16	9 7/16	9 7/16
9	11 13/16	11 13/16	11 13/16	11 13/16	11 13/16	11 13/16	11 13/16	11 13/16
11	11 13/16	11 13/16	11 13/16	11 13/16	11 13/16	11 13/16	11 13/16	11 13/16



**TYPE G**  
45 REQ'D

**TYPE H**  
3 REQ'D

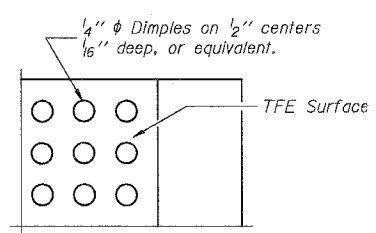
**SECTION D-D**  
TYPE G, H



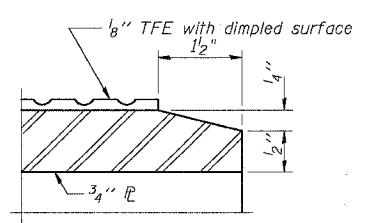
**TYPE I**  
8 REQ'D

**SECTION E-E**  
TYPE I

**FABRICATED STEEL EXTENSION DETAILS**



**PLAN-TFE SURFACE**



**SECTION THRU TFE**

**Notes:**

- Prior to ordering any material, the contractor shall verify in the field all bearing height and shim thickness dimensions.
- Use holes in new bearings as template to field drill holes in existing girders.
- The orientation of the bearing in the field shall be coordinated with the slope of the steel beam.
- The 1/8" TFE sheet shall be bonded directly to the top steel plate with a two-component, medium viscosity epoxy resin, conforming to the requirements of the Federal Specification MMM-A-134, Type I. The bond agent shall be applied on the full area of the contact surfaces.
- Bonding of 1/8" TFE sheet during vulcanizing process will be permitted provided the process and method of adjusting assembly height is approved by the Engineer.

- For procedure to jack and remove existing bearing see sheet 250.
- Beam numbers reference as-built drawings, see Framing plans for cross reference.
- For Side Retainers dimensions see sheet 250.
- Notes applicable to bearing manufacturer are provided for information only. Erection contractor shall only refer to notes and details applicable for existing bearing removal and installation of provided bearings and extensions.

**BILL OF MATERIAL**

Item	Unif	Quantity
Erecting Elastomeric Bearing Assembly, Type I	Each	127
Erecting Elastomeric Bearing Assembly, Type II	Each	16
Anchor Bolts	Each	286
Jack and Remove Existing Bearings	Each	143

REVISIONS	
NAME	DATE

ILLINOIS DEPARTMENT OF TRANSPORTATION  
 F.A.I. 94/90 (DAN RYAN EXPRESSWAY)  
 NB DAN RYAN ELEVATED BRIDGE  
 REPAIR FROM 15TH TO 28TH STREETS  
 STEEL EXTENSION  
 DETAILS

SCALE: NTS  
 DATE: 7/22/2005

DRAWN BY: LM  
 CHECKED BY: BLU

BOWMAN, BARRETT & ASSOCIATES INC.  
 CONSULTING ENGINEERS  
 Chicago, Illinois  
 312.228.0100  
 www.bbainc.com