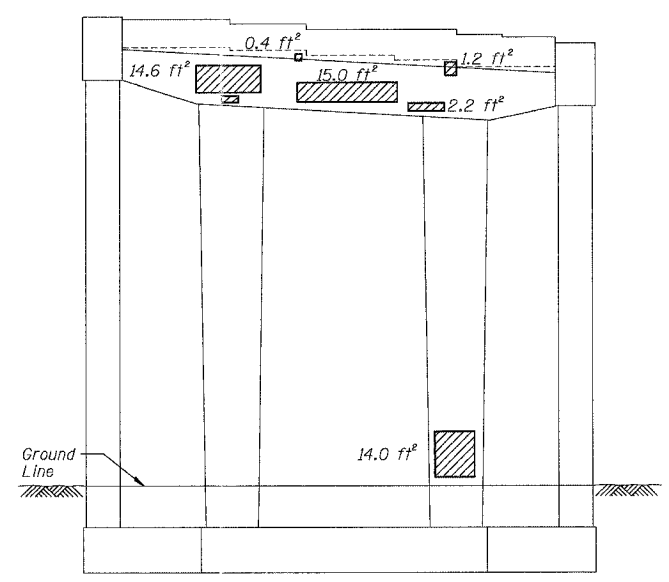
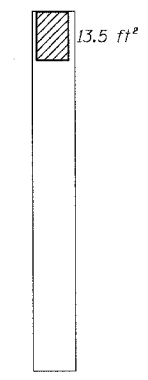


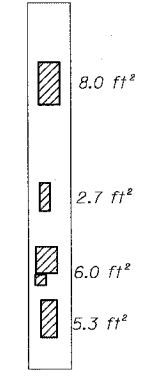
F.A.I.	SECTION	COUNTY	TOTAL SHEETS	SHEET NO.
94/90	2003-026F	COOK	419	261
STA.	TO STA.			
FED. ROAD DIST. NO.	ILLINOIS	FED. AID PROJECT		
62580				



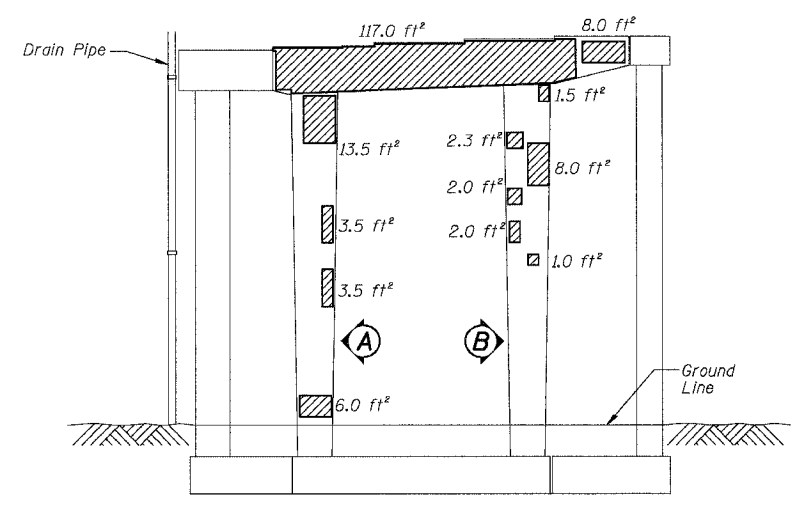
PIER E-2 - SOUTH ELEVATION
(Looking North)



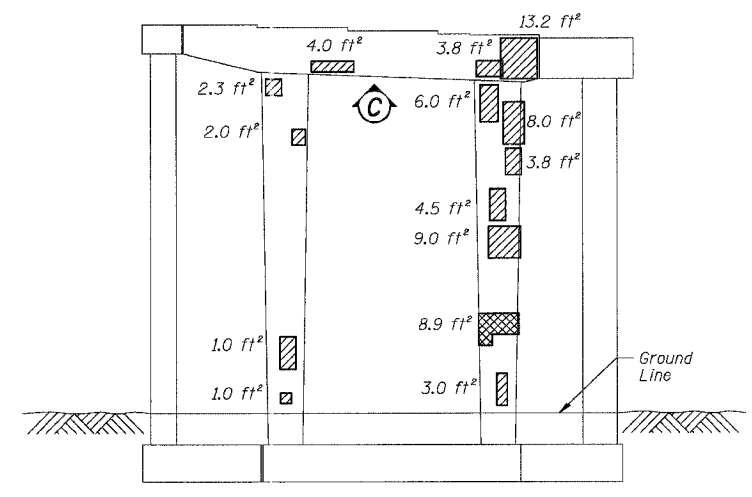
PIER E-1 - VIEW A
Looking East at Side of Column



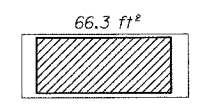
PIER E-1 - VIEW B
Looking West at Side of Column



PIER E-1 - NORTH ELEVATION
(Looking South)



PIER E-1 - SOUTH ELEVATION
(Looking North)



PIER E-1 - VIEW C
Looking up at Bottom of Cap

BILL OF MATERIAL

ITEM	UNIT	QUANTITY
High Performance Enhanced Shotcrete	SQ. FT.	436.0
Formed Concrete Repair (Depth Greater than 5")	SQ. FT.	10.2

REVISIONS NAME	DATE

ILLINOIS DEPARTMENT OF TRANSPORTATION
F.A.I. 94/90 (DAN RYAN EXPRESSWAY)
NB DAN RYAN ELEVATED BRIDGE
REPAIR FROM 15TH TO 28TH STREETS
CONCRETE PIER REPAIRS
SN 016-1115, PIERS E-1,E-2
SCALE: NTS
DATE: 7/22/2005
DRAWN BY: BDC
CHECKED BY: BLU

BOWMAN, BARRETT & ASSOCIATES INC
CONSULTING ENGINEERS
Chicago, Illinois
312.228.0100
www.bbainc.com

For Notes and Legend See Sheet 253