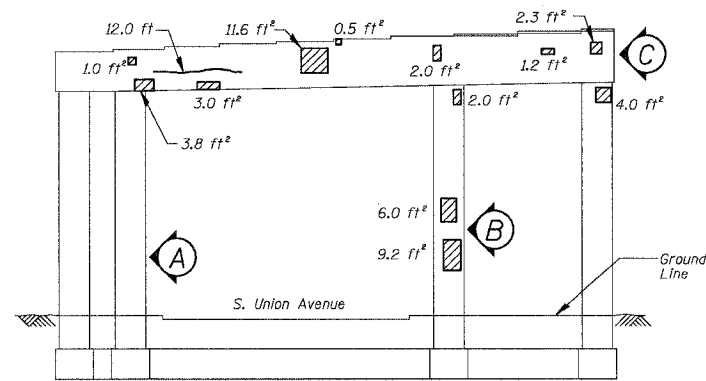
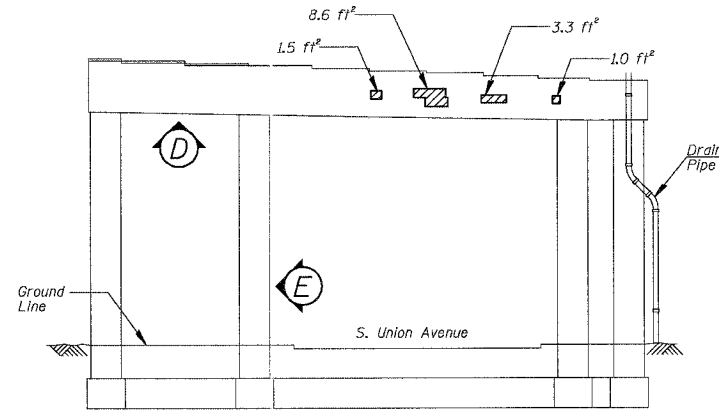


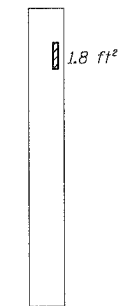
F.A.I.	SECTION	COUNTY	TOTAL SHEETS	SHEET NO.
94/90	2003-028F	COOK	419	277
STA.	TO STA.			
FED. ROAD DIST. NO.	ILLINOIS	FED. AID PROJECT		
62580				



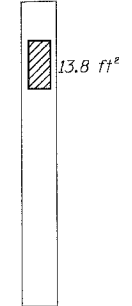
PIER C-5 - NORTH ELEVATION
(Looking South)



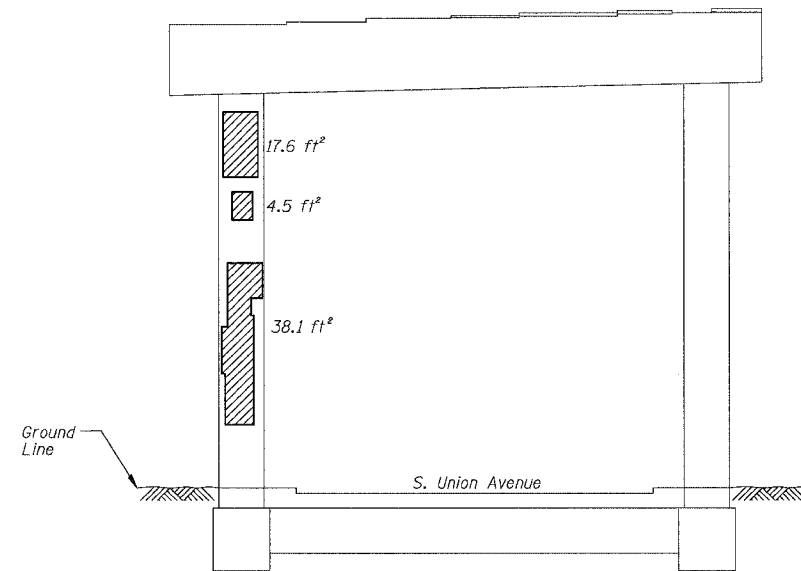
PIER C-5 - SOUTH ELEVATION
(Looking North)



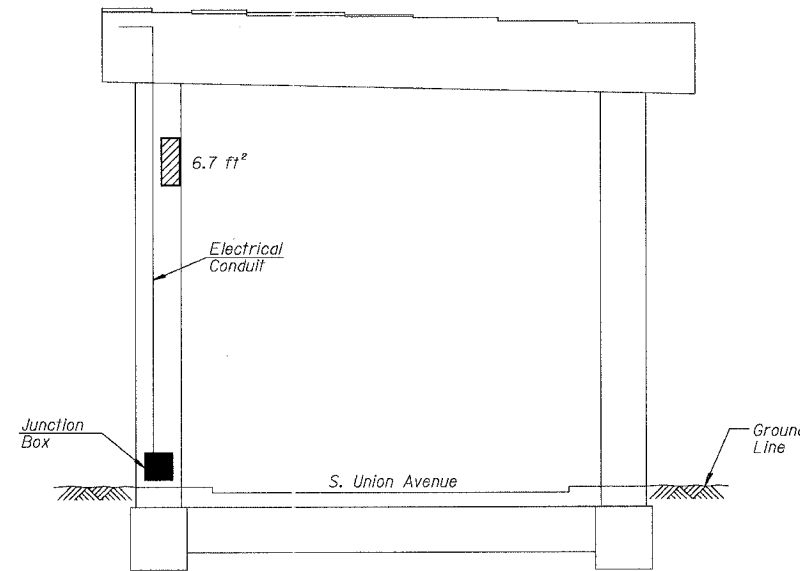
PIER C-5 - VIEW A
Looking East
at side
of column



PIER C-5 - VIEW B
Looking East
at side
of column



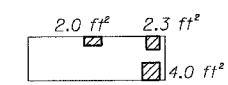
PIER C-4 - NORTH ELEVATION
(Looking South)



PIER C-4 - SOUTH ELEVATION
(Looking North)



PIER C-5 - VIEW C
Looking East
at end
of cap



PIER C-5 - VIEW D
Looking up
at bottom
of cap



PIER C-5 - VIEW E
Looking West
at side of column

BILL OF MATERIAL

ITEM	UNIT	QUANTITY
High Performance Enhanced Shotcrete	SQ. FT.	195.5
Epoxy Crack Sealing	FOOT	13.8

REVISIONS	
NAME	DATE

ILLINOIS DEPARTMENT OF TRANSPORTATION
F.A.I. 94/90 (DAN RYAN EXPRESSWAY)
NB DAN RYAN ELEVATED BRIDGE
REPAIR FROM 15TH TO 28TH STREETS
CONCRETE PIER REPAIRS
SN 016-1113, PIERS C-4,C-5
SCALE: NTS
DATE: 7/22/2005
DRAWN BY: BDC
CHECKED BY: BLU

BOWMAN, BARRETT & ASSOCIATES INC.
CONSULTING ENGINEERS
Chicago, Illinois
312.228.0100
www.bbainc.com

For Notes and Legend See Sheet 253