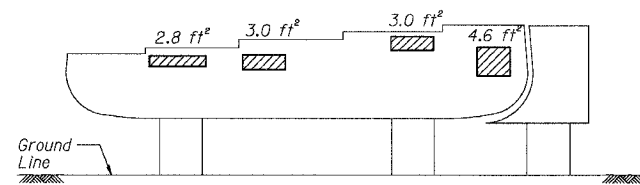
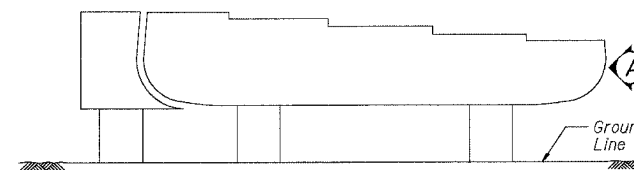


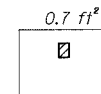
F.A.I.	SECTION	COUNTY	TOTAL SHEETS	SHEET NO.
94/90	2003-028F	COOK	419	283
STA.	TO STA.			
FED. ROAD DIST. NO.	ILLINOIS	FED. AID PROJECT	62580	



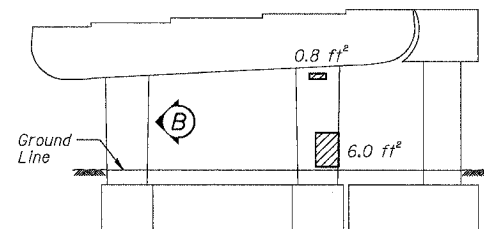
**PIER D-13 - NORTH ELEVATION**  
(Looking South)



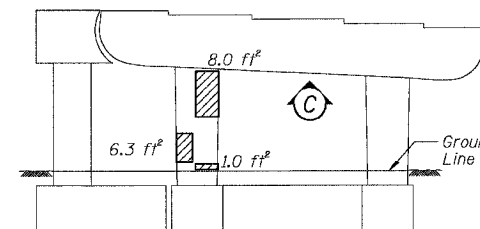
**PIER D-13 - SOUTH ELEVATION**  
(Looking North)



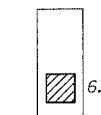
**PIER D-13 - VIEW A**  
Looking West at end of cap



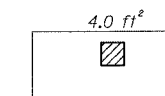
**PIER D-12 - NORTH ELEVATION**  
(Looking South)  
Repairs are required on side of column also.



**PIER D-12 - SOUTH ELEVATION**  
(Looking North)  
Repairs are required on side of column also.



**PIER D-12 - VIEW B**  
Looking East at side of column



**PIER D-12 - VIEW C**  
Looking up at bottom of cap

BOWMAN, BARRETT & ASSOCIATES INC.  
CONSULTING ENGINEERS  
Chicago, Illinois  
312.228.0100  
www.bbainc.com

For Notes and Legend See Sheet 253

**BILL OF MATERIAL**

ITEM	UNIT	QUANTITY
High Performance	SQ. FT.	53.5
Enhanced Shotcrete		

REVISIONS	
NAME	DATE

ILLINOIS DEPARTMENT OF TRANSPORTATION  
F.A.I. 94/90 (DAN RYAN EXPRESSWAY)  
NB DAN RYAN ELEVATED BRIDGE  
REPAIR FROM 15TH TO 28TH STREETS  
CONCRETE PIER REPAIRS  
SN 016-1112, PIERS D-12, D-13  
SCALE: NTS  
DATE: 7/22/2005  
DRAWN BY: BDC  
CHECKED BY: BLU

5:58:28 PM  
7/20/2005