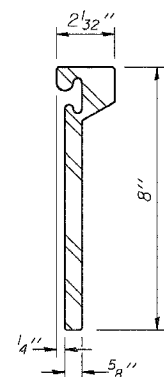


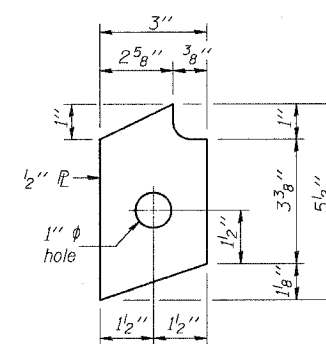
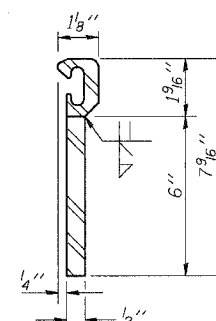
**SECTION THRU ROLLED RAIL EXP. JOINT**

(11,198 Studs Required)

**ROLLED (EXTRUDED) RAIL**



**WELDED RAIL**

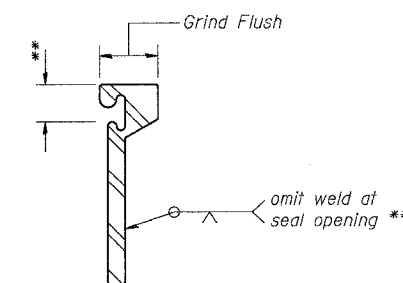


**ANCHOR PLATE**

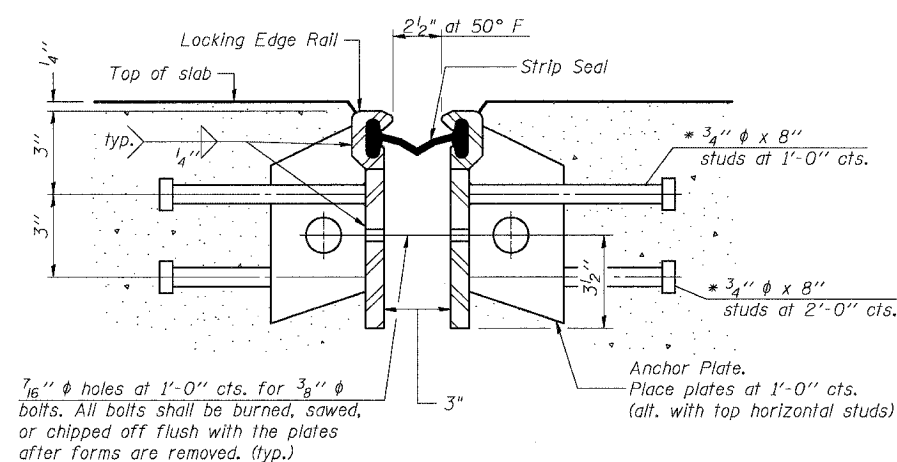
(For welded rail)

**LOCKING EDGE RAIL SPLICE**

The inside of the locking edge rail groove shall be free of weld residue.

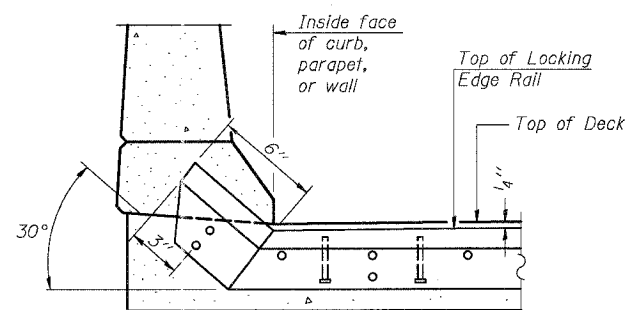


**EXPANSION JOINT LOCKING EDGE RAIL DETAILS**

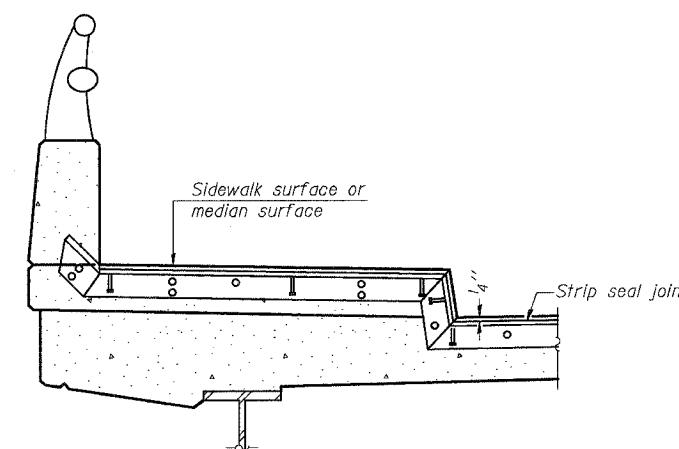


**SECTION THRU WELDED RAIL EXP. JOINT**

(7,514 Studs Required)  
(3,684 Anchor Plates Required)



**AT CURB, PARAPET, OR WALL**



**AT SIDEWALK OR MEDIAN\***

\* Shorter plates with a single row of studs at 12" centers may be necessary on medians which are shallower than 9". See manufacturer's recommendation.

**TYPICAL END TREATMENTS**

**GENERAL NOTES**

The strip seal shall be made continuous and shall have a minimum thickness of 1/4". The configuration of the strip seal shall match the configuration of the Locking Edge Rails. The height and thickness of the Locking Edge Rails shown are minimum dimensions. The actual configuration of the Locking Edge Rails and matching strip seal may vary from manufacturer to manufacturer. Flanged edge rails will not be allowed. Locking Edge Rails may be spliced at slope discontinuities and stage construction joints. The manufacturer's recommended installation methods shall be followed.

\* Granular or solid flux filled headed studs conforming to Article 1006.32 of the Std. Specs., automatically end welded.

REVISIONS		ILLINOIS DEPARTMENT OF TRANSPORTATION F.A.I. 94/90 (DAN RYAN EXPRESSWAY) NB DAN RYAN ELEVATED BRIDGE REPAIR FROM 15TH TO 28TH STREETS STRIP SEAL EXPANSION JOINT ASSEMBLY DETAILS
NAME	DATE	
		SCALE: NTS
		DATE: 8/12/2005
		DRAWN BY: BDC
		CHECKED BY: BLU