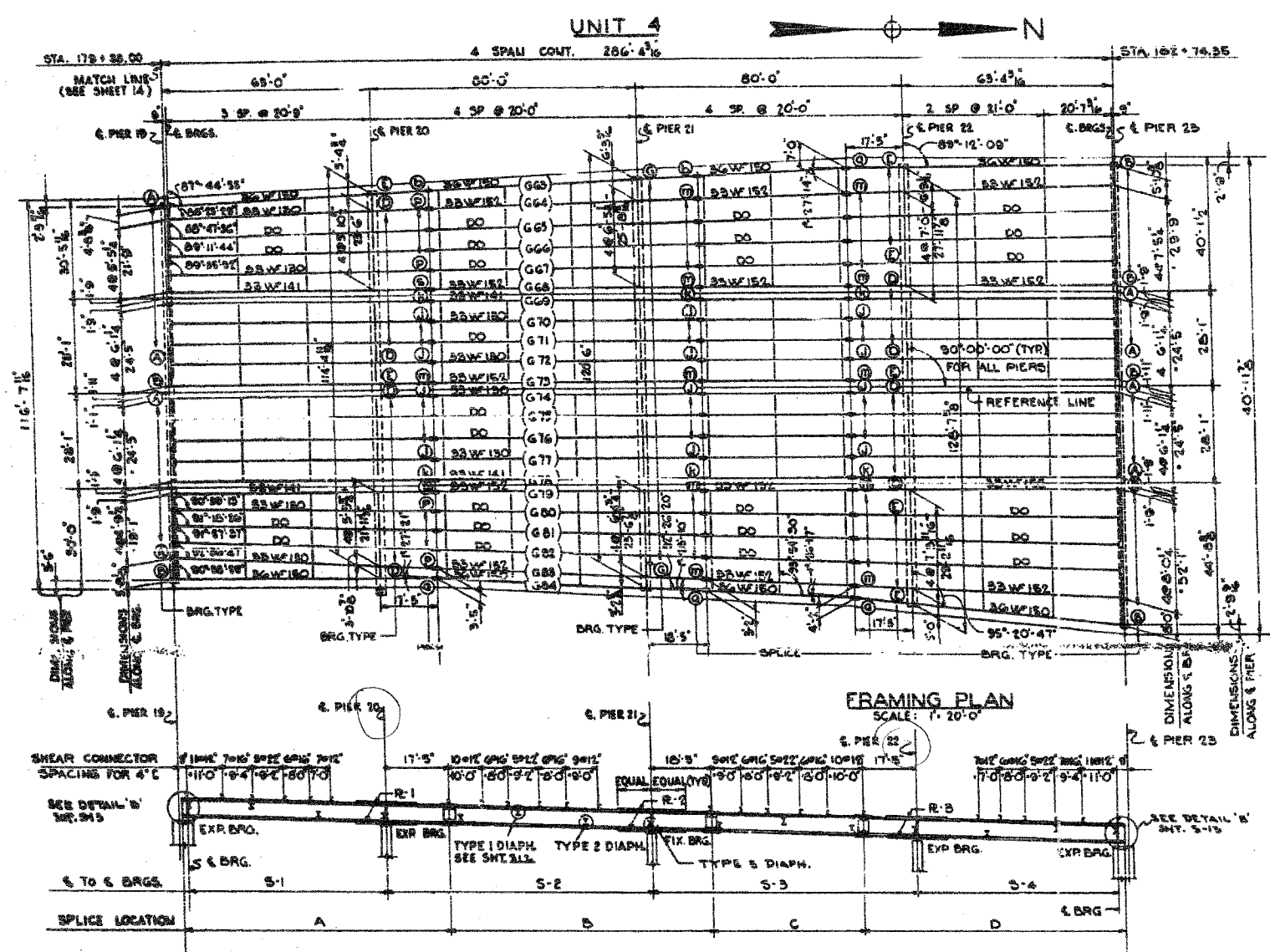
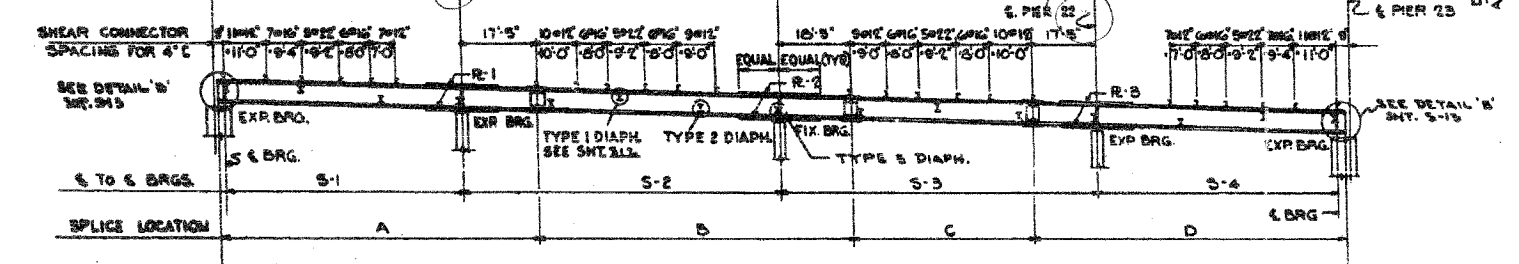


62580



**FRAMING PLAN**  
SCALE: 1" = 20'-0"



**GIRDER ELEVATION**  
HOR. SCALE: 1" = 20'-0"  
VER. SCALE: 1" = 10'-0"

NOTE:  
ALL COVER PLATES  
SYMM. ABOUT G PIER 8

GIRDER	A	B	C	D	S-1	S-2	S-3	S-4	COVER R1	COVER R2	COVER R3
G3	80'-2"	81'-0"	44'-2"	80'-6"	62'-3"	80'-0"	80'-0"	62'-7"	10'-4"x17'-0"	10'-4"x17'-0"	10'-4"x17'-0"
G4	80'-2"	81'-0"	44'-2"	80'-6"	62'-3"	80'-0"	80'-0"	62'-7"	10'-4"x17'-0"	10'-4"x17'-0"	10'-4"x17'-0"
G5	80'-2"	81'-0"	44'-2"	80'-6"	62'-3"	80'-0"	80'-0"	62'-7"	10'-4"x17'-0"	10'-4"x17'-0"	10'-4"x17'-0"
G6	80'-2"	81'-0"	44'-2"	80'-6"	62'-3"	80'-0"	80'-0"	62'-7"	10'-4"x17'-0"	10'-4"x17'-0"	10'-4"x17'-0"
G7	80'-2"	81'-0"	44'-2"	80'-6"	62'-3"	80'-0"	80'-0"	62'-7"	10'-4"x17'-0"	10'-4"x17'-0"	10'-4"x17'-0"
G8	80'-2"	81'-0"	44'-2"	80'-6"	62'-3"	80'-0"	80'-0"	62'-7"	10'-4"x17'-0"	10'-4"x17'-0"	10'-4"x17'-0"
G9,78	80'-2"	81'-0"	44'-2"	80'-6"	62'-3"	80'-0"	80'-0"	62'-7"	10'-4"x17'-0"	10'-4"x17'-0"	10'-4"x17'-0"
G10	80'-2"	81'-0"	44'-2"	80'-6"	62'-3"	80'-0"	80'-0"	62'-7"	10'-4"x17'-0"	10'-4"x17'-0"	10'-4"x17'-0"
G11	80'-2"	81'-0"	44'-2"	80'-6"	62'-3"	80'-0"	80'-0"	62'-7"	10'-4"x17'-0"	10'-4"x17'-0"	10'-4"x17'-0"
G12	80'-2"	81'-0"	44'-2"	80'-6"	62'-3"	80'-0"	80'-0"	62'-7"	10'-4"x17'-0"	10'-4"x17'-0"	10'-4"x17'-0"
G13	80'-2"	81'-0"	44'-2"	80'-6"	62'-3"	80'-0"	80'-0"	62'-7"	10'-4"x17'-0"	10'-4"x17'-0"	10'-4"x17'-0"
G14	80'-2"	81'-0"	44'-2"	80'-6"	62'-3"	80'-0"	80'-0"	62'-7"	10'-4"x17'-0"	10'-4"x17'-0"	10'-4"x17'-0"
G15	80'-2"	81'-0"	44'-2"	80'-6"	62'-3"	80'-0"	80'-0"	62'-7"	10'-4"x17'-0"	10'-4"x17'-0"	10'-4"x17'-0"
G16	80'-2"	81'-0"	44'-2"	80'-6"	62'-3"	80'-0"	80'-0"	62'-7"	10'-4"x17'-0"	10'-4"x17'-0"	10'-4"x17'-0"
G17	80'-2"	81'-0"	44'-2"	80'-6"	62'-3"	80'-0"	80'-0"	62'-7"	10'-4"x17'-0"	10'-4"x17'-0"	10'-4"x17'-0"
G18	80'-2"	81'-0"	44'-2"	80'-6"	62'-3"	80'-0"	80'-0"	62'-7"	10'-4"x17'-0"	10'-4"x17'-0"	10'-4"x17'-0"
G19	80'-2"	81'-0"	44'-2"	80'-6"	62'-3"	80'-0"	80'-0"	62'-7"	10'-4"x17'-0"	10'-4"x17'-0"	10'-4"x17'-0"
G20	80'-2"	81'-0"	44'-2"	80'-6"	62'-3"	80'-0"	80'-0"	62'-7"	10'-4"x17'-0"	10'-4"x17'-0"	10'-4"x17'-0"
G21	80'-2"	81'-0"	44'-2"	80'-6"	62'-3"	80'-0"	80'-0"	62'-7"	10'-4"x17'-0"	10'-4"x17'-0"	10'-4"x17'-0"
G22	80'-2"	81'-0"	44'-2"	80'-6"	62'-3"	80'-0"	80'-0"	62'-7"	10'-4"x17'-0"	10'-4"x17'-0"	10'-4"x17'-0"

NOTE: ALL DIMENSIONS ARE IN THE HORIZONTAL PLANE AND ALONG THE G OF THE GIRDER WEB.  
DIMENSIONS MARKED THUS (Ø) ARE NOT STRAIGHT LINES BETWEEN BEARINGS.

TABLE OF FILL PLATES AT BEARINGS							
UNIT 1							
LOCATION	G4	G5	G6	G7	G15	G16	G17
PIER 7	-	-	14'-2"x11'	14'-2"x11'	-	14'-2"x11'	14'-2"x11'
PIER 8	-	-	9'-4"x10'	9'-4"x10'	-	9'-4"x10'	9'-4"x10'
PIER 9	-	-	11'-2"x10'	11'-2"x10'	11'-2"x10'	11'-2"x10'	-
PIER 10	9'-4"x10'	9'-4"x10'	9'-4"x10'	9'-4"x10'	9'-4"x10'	9'-4"x10'	-
PIER 11	G1	G2	G3	G4	G5	G6	G7
	14'-2"x11'	14'-2"x11'	14'-2"x11'	14'-2"x11'	14'-2"x11'	14'-2"x11'	14'-2"x11'
	G9	G10	G11	G12	G13	G14	G15
	14'-2"x11'	14'-2"x11'	14'-2"x11'	14'-2"x11'	14'-2"x11'	14'-2"x11'	14'-2"x11'
	G17	G18	G19	G20	G21	G22	-
14'-2"x11'	14'-2"x11'	14'-2"x11'	14'-2"x11'	14'-2"x11'	14'-2"x11'	-	

UNIT 2							
LOCATION	G23	G24	G25	G26	G27	G42	-
PIER 11	-	14'-2"x11'	14'-2"x11'	14'-2"x11'	14'-2"x11'	-	-
PIER 12	-	9'-4"x10'	9'-4"x10'	9'-4"x10'	9'-4"x10'	-	-
PIER 13	-	11'-2"x10'	11'-2"x10'	11'-2"x10'	11'-2"x10'	-	-
PIER 14	-	9'-4"x10'	9'-4"x10'	9'-4"x10'	9'-4"x10'	-	-
PIER 15	14'-2"x11'	14'-2"x11'	14'-2"x11'	14'-2"x11'	14'-2"x11'	-	-

UNIT 3 56 G57 58 G2							
LOCATION	G43	G44	G55	G56	G57	G58	G59
PIER 15	-	-	14'-2"x11'	14'-2"x11'	14'-2"x11'	14'-2"x11'	-
PIER 16	-	-	11'-2"x10'	11'-2"x10'	11'-2"x10'	11'-2"x10'	-
PIER 17	11'-2"x10'	11'-2"x10'	-	-	-	-	-
PIER 18	-	-	11'-2"x10'	11'-2"x10'	11'-2"x10'	11'-2"x10'	-
PIER 19	-	-	14'-2"x11'	14'-2"x11'	14'-2"x11'	14'-2"x11'	-

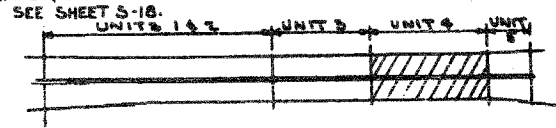
  

UNIT 4							
LOCATION	G67	G68	G70	G75	G77	G79	G80
PIER 19	14'-2"x11'	-	14'-2"x11'	14'-2"x11'	14'-2"x11'	-	14'-2"x11'
PIER 20	-	9'-4"x10'	-	-	-	9'-4"x10'	-
PIER 21	-	11'-2"x10'	-	-	-	11'-2"x10'	-
PIER 22	11'-2"x10'	9'-4"x10'	-	-	-	9'-4"x10'	11'-2"x10'
PIER 23	G69	G70	G71	G75	G76	G77	G78
	14'-2"x11'	14'-2"x11'	14'-2"x11'	14'-2"x11'	14'-2"x11'	14'-2"x11'	14'-2"x11'

TOTAL WEIGHT OF FILL PLATES = 2,685 POUNDS.

TABLE OF BEVELS OF SOLE PLATES				
	UNIT #1	UNIT #2	UNIT #3	UNIT #4
	PIER 7	PIER 11	PIER 15	PIER 19
G1 TO G22	7/8"	5/8"	-	-
G23 TO G42	-	5/8"	5/8"	-
G43 & G44	-	-	5/8"	5/8"
G44 TO G61	-	-	5/8"	5/8"
G63 TO G84	-	-	-	5/8"

NOTE:  
FOR BEARINGS SEE SHT. S18 & S19  
FOR LOCATION OF BEVELS SEE SHEET S-18.



KEY PLAN

BILL OF MATERIAL		
ITEM	UNIT	QUANTITY
GIRDERS	POUND	588,205
DIAPHRAGMS	POUND	78,465
FILL PLATES	POUND	2,685

ASTM TYPE A7  
INCLUDED IN WEIGHT ON SHT. S12

CITY OF CHICAGO  
DEPARTMENT OF PUBLIC WORKS  
BUREAU OF ENGINEERING  
SOUTH ROUTE SUPERHIGHWAY  
ELEVATED HIGHWAY  
W. 15TH ST. TO W. MAXWELL ST.  
SECTION 8-1883.3-1H  
**STEEL FRAMING PLAN**  
UNIT 4  
DE LEW, GATNER & COMPANY  
CONSULTING ENGINEERS CHICAGO, ILLINOIS  
SCALE: AS NOTED  
SHEET S15 OF 64

REVISIONS	
NAME	DATE

ILLINOIS DEPARTMENT OF TRANSPORTATION  
F.A.I. 94/90 (DAN RYAN EXPRESSWAY)  
NB DAN RYAN ELEVATED BRIDGE  
REPAIR FROM 15TH TO 28TH STREETS  
EXISTING PLAN INFORMATION  
SN 016-0137  
SCALE: NTS  
DATE: 7/22/2005  
DRAWN BY: BDC  
CHECKED BY: BLU

FOR INFORMATION ONLY

BOWMAN, BARRETT & ASSOCIATES INC.  
CONSULTING ENGINEERS  
Chicago, Illinois  
312.228.0100  
www.bbainc.com

Designed By: J.B.  
Drawn By: P.B.T.  
Checked By: P.M.A.  
In Charge: H.S. WLF  
Approved By: L.H. WLF