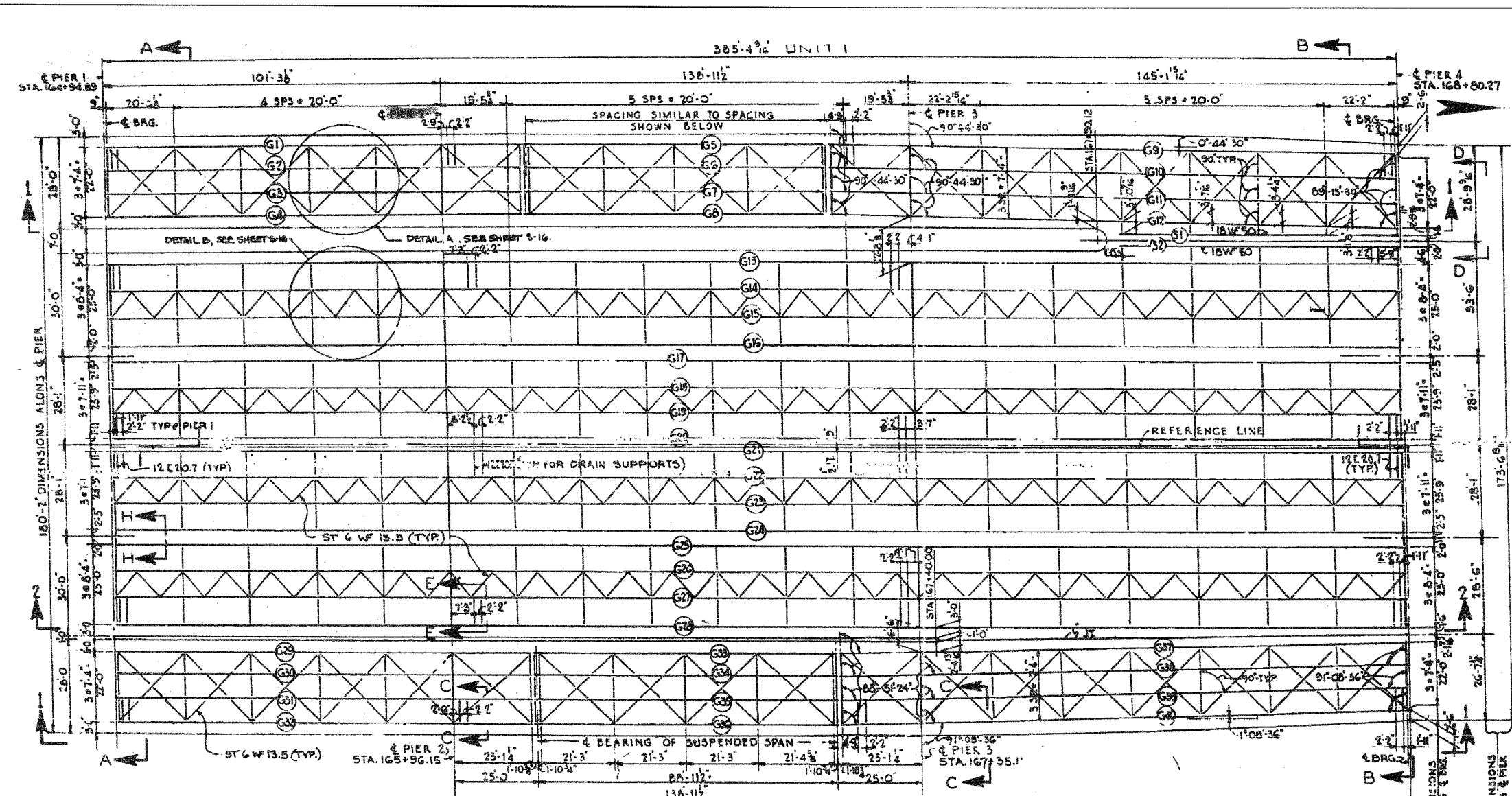


F.A.I.	SECTION	COUNTY	TOTAL SHEETS	SHEET NO.
94/90	2003-028F	COOK	419	321
STA.	TO STA.			
FED. ROAD DIST. NO.	ILLINOIS	FED. AID PROJECT		

62580



STRUCTURAL STEEL NOTES

ALL FURNISHING, FABRICATING, TRANSPORTING, ERECTING AND PAINTING OF STRUCTURAL STEEL SHALL BE IN ACCORDANCE WITH SECTION 54 AND 55 OF THE STANDARD SPECIFICATIONS.

EXCEPT WHERE OTHERWISE NOTED, ALL STRUCTURAL STEEL SHALL CONFORM TO SPECIFICATIONS FOR STEEL FOR BRIDGES AND BUILDINGS ASTM DESIGNATION A-7 AND ASTM DESIGNATION A-373 AND WHERE APPLICABLE, TO THE REQUIREMENTS OF ARTICLE 124.2, AND 124.3 (a) OF THE STANDARD SPECIFICATIONS.

BEARING AND SPLICE NOTES:-

ALL GIRDER FIELD SPLICES SHALL BE SUB-PUNCHED, REAMED AND MATCH-MARKED FOR SHIPMENT WHILE THE MEMBERS ARE SHOP ASSEMBLED IN PROPER ALIGNMENT, WITH OR WITHOUT DIAPHRAGMS. ALL GIRDER FIELD SPLICES SHALL BE SUB-PUNCHED 1/16" Ø, REAMED TO 13/16" Ø FOR 3/4" Ø BOLTS AND REAMED TO 15/16" Ø FOR 7/8" Ø BOLTS.

ALL GIRDERS SHALL BE ERECTED FULL LENGTH IN THE SHOP BEFORE REAMING AND INSPECTION.

STRUCTURAL STEEL SHALL RECEIVE ONE SHOP COAT OF RED LEAD PAINT. PARTS INACCESSIBLE AFTER ERECTION SHALL HAVE TWO SHOP COATS OF RED LEAD PAINT. FOR ADDITIONAL SHOP AND FIELD PAINT LOGS, SEE THE SPECIAL PROVISIONS.

ALL ROLLERS, ROCKERS, BOLSTERS, BEARING PLATES, LEAD PLATES, PINTLES, ANCHOR BOLTS AND SPLICES SHALL BE FABRICATED AND SET IN ACCORDANCE WITH ARTICLES 54.5 OF THE STANDARD SPECIFICATIONS AND SHALL BE FINISHED IN ACCORDANCE WITH ARTICLE 54.5(i). THESE ITEMS ARE INCLUDED IN THE WEIGHT OF STRUCTURAL STEEL.

SPLICE PLATES TO BE MATCH-MARKED FOR SHIPMENT.

ANCHOR BOLTS SHALL BE SET BEFORE BOLTING DIAPHRAGMS OVER PIERS AND ABUTMENTS.

FINISHED SURFACES OF BEARINGS AND ROLLERS SHALL BE TREATED WITH ANTI-RUST COMPOUND BEFORE SHIPMENT AS STATED IN ARTICLE 50.4 OF THE STANDARD SPECIFICATIONS.

ALL FIELD CONNECTIONS SHALL BE MADE WITH 3/4" Ø OR 7/8" Ø HIGH STRENGTH BOLTS AS INDICATED.

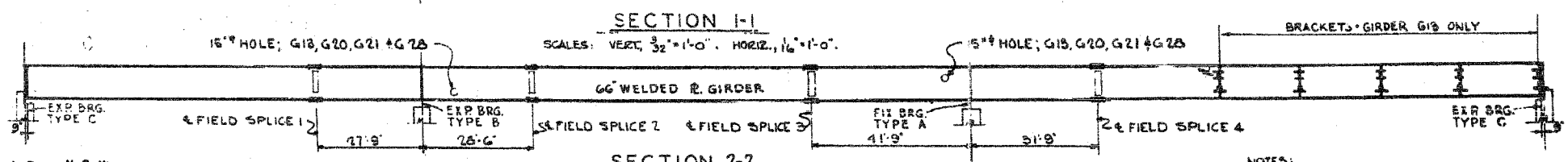
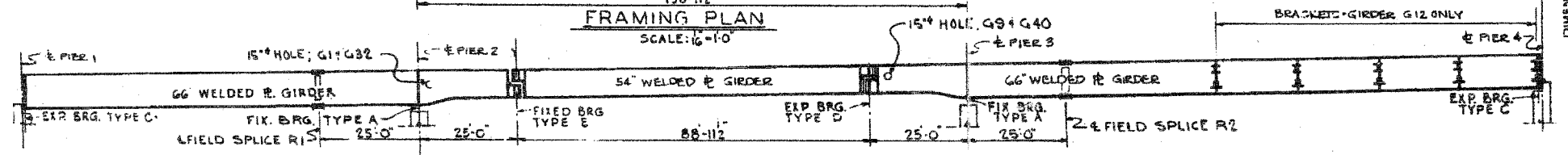
ALL RIVETS, UNLESS OTHERWISE SHOWN OR NOTED, SHALL BE 3/4" Ø, OPEN HOLES 13/16" Ø.



SUMMARY OF STRUCTURAL STEEL UNIT 1

ITEM	UNIT	QUANTITY	
		ASTM A7	ASTM A36
GIRDERS	POUND		2,634,487
CROSS FRAMES	POUND	126,864	
LATERAL BRACING	POUND	108,325	
GIRDER BEARINGS	POUND	87,800	
EXPANSION GUARDS	POUND	81,032	
TOTAL	POUND	599,011	2,634,367

INCLUDED IN SUMMARY ON SHEET 31



Designed By: N.S.W.
 Drawn By: W.C.K.
 Checked By: R.S.
 In Charge: N.S.WULF
 Approved By: L.N.RIAN

NOTES:
 FOR GIRDER DETAILS, SEE SHEETS 3-12 THRU 3-16
 FOR SECTIONS A-A, B-B, & E-E, SEE SHEET 3-15
 FOR SECTIONS C-C, D-D, & H-H, SEE SHEET 3-16

BOWMAN, BARRETT & ASSOCIATES INC.
 CONSULTING ENGINEERS
 Chicago, Illinois
 312.228.0100
 www.bbainc.com

FOR INFORMATION ONLY

Sheet S11 of 56

REVISIONS	
NAME	DATE

ILLINOIS DEPARTMENT OF TRANSPORTATION
 F.A.I. 94/90 (DAN RYAN EXPRESSWAY)
 NB DAN RYAN ELEVATED BRIDGE
 REPAIR FROM 15TH TO 28TH STREETS
 EXISTING PLAN INFORMATION
 SN 016-1110

SCALE: NTS
 DATE: 7/22/2005

DRAWN BY: BDC
 CHECKED BY: BLU

7/19/2005 11:44:41 AM