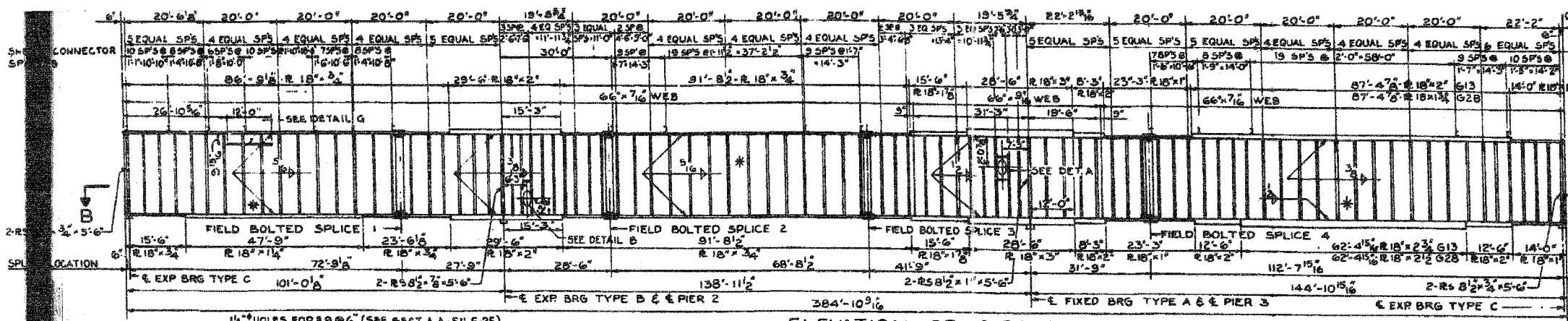


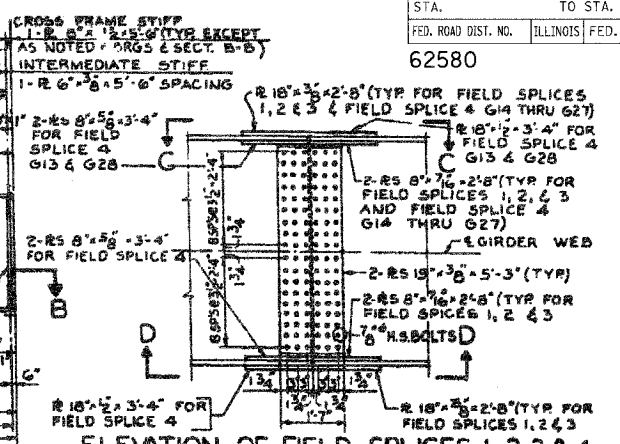
62580



**ELEVATION OF GIRDER G13**

(GIRDER G28 SIMILAR EXCEPT AS NOTED)

SCALE: HORIZ: 1/8" = 1'-0" VERT: 1/4" = 1'-0"



**ELEVATION OF FIELD SPLICES 1, 2, 3 & 4**

(SPLICE DETAILS APPLY TO ROWY GIRDERS G13 THRU G28 ONLY)

SCALE: 1/2" = 1'-0"

**DETAIL G**

1/2" HOLES FOR 3/8" x 5/8" STIFF ON INSIDE FACE ONLY

WELD 6" x 3/8" x 8" x 1/2" STIFF. TO TOP FLG. SEE DETAIL D SH. 5-16

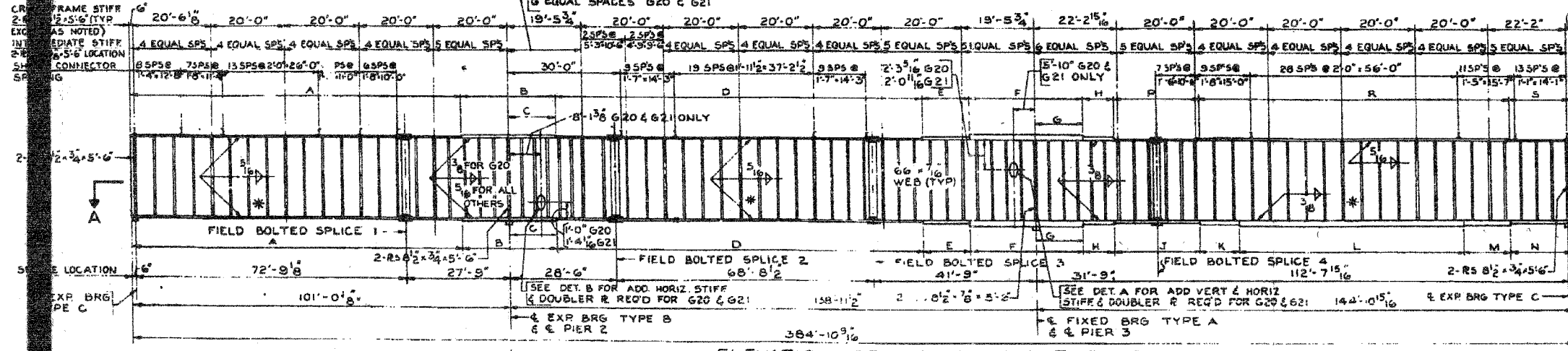
WELD 6" x 3/8" x 8" x 1/2" STIFF TO BOT. FLG. SEE DET. E SH. 5-16

WELD 6" x 3/8" x 8" x 1/2" STIFF TO TOP FLG. SEE DET. D SH. 5-16

WELD 6" x 3/8" x 8" x 1/2" STIFF TO BOT. FLG. SEE DET. E SH. 5-16

**SECTION B-B**

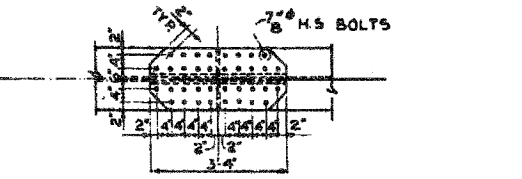
SCALE: HORIZ: 1/8" = 1'-0" VERT: 1/4" = 1'-0"



**ELEVATION OF GIRDERS G14 THRU G27**

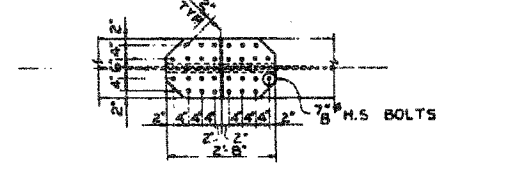
SCALE: HORIZ: 1/8" = 1'-0" VERT: 1/4" = 1'-0"

**SECTION A-A**



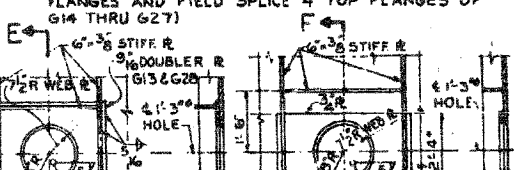
**VIEW D-D**

(FOR FIELD SPLICE 4 BOT. FLANGES OF ALL GIRDERS & TOP FLANGES OF G13 & G28)



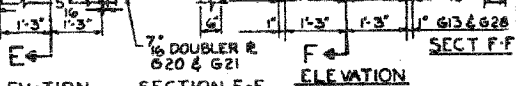
**VIEW C-C**

(TYPICAL FOR FIELD SPLICES 1, 2, 3 TOP & BOTTOM FLANGES AND FIELD SPLICE 4 TOP FLANGES OF G14 THRU G27)



**ELEVATION SECTION E-E**

SCALE: 1/2" = 1'-0"



**ELEVATION SECTION F-F**

SCALE: 1/2" = 1'-0"

**NOTE:**  
FOR GIRDERS G16, G17, G20, G21, G24 & G25  
USE 1-8" x 12-5/8" STIFFENER R AT CROSSFRAME  
CONNECTIONS AND 1-6" x 3/8" x 5-6" STIFFENER R  
WHERE NO CROSSFRAME CONNECTIONS ARE MADE.

**WELDED PLATE GIRDER SCHEDULE**

GIRDER	A	B	C	D	E	F	G	H	J	K	L	M	N	P	R	S
G15, G26 & G27	18'-3 3/4" x 89'-3 3/8" x 18'-3 3/8" x 23'-3 3/8" R	11'-6"	18'-3 3/4" x 101'-5 1/2" R	18'-3 3/4" x 12'-6" R	18'-2 1/2" x 24'-6" R	11'-0"	18'-1 1/2" x 10'-0" R	18'-1 1/2" x 21'-0" R	18'-1 1/2" x 9'-0" R	18'-2 1/2" x 66'-10 1/2" R	18'-1 1/2" x 29'-6" R	18'-1 1/2" x 17'-6" R	18'-3 3/4" x 21'-0" R	18'-1 1/2" x 85'-4 1/2" R	18'-3 3/4" x 11'-6" R	
G17, G18 & G19	18'-3 3/4" x 90'-6 3/8" R	10'-6"	18'-3 3/4" x 103'-11 1/2" R	18'-1 1/2" x 11'-6" R	18'-2 1/2" x 23'-9" R	10'-9"	18'-1 1/2" x 9'-3" R	18'-1 1/2" x 23'-0" R	18'-1 1/2" x 10'-0" R	18'-1 1/2" x 62'-4 1/2" R	18'-1 1/2" x 10'-0" R	18'-1 1/2" x 19'-6" R	18'-3 3/4" x 23'-0" R	18'-1 1/2" x 82'-4 1/2" R	18'-3 3/4" x 19'-6" R	
G22, G23, G24 & G25	18'-3 3/4" x 87'-6 3/8" R	13'-6"	18'-3 3/4" x 96'-11 1/2" R	18'-1 1/2" x 12'-6" R	18'-2 1/2" x 28'-9" R	12'-9"	18'-1 1/2" x 9'-3" R	18'-1 1/2" x 21'-0" R	18'-1 1/2" x 9'-9" R	18'-2 1/2" x 67'-7 1/2" R	18'-1 1/2" x 8'-9" R	18'-1 1/2" x 16'-9" R	18'-3 3/4" x 21'-0" R	18'-1 1/2" x 85'-4 1/2" R	18'-3 3/4" x 16'-9" R	

**CITY OF CHICAGO**  
**DEPARTMENT OF PUBLIC WORKS**  
**BUREAU OF ENGINEERING**  
**SOUTH ROUTE SUPERHIGHWAY**  
**ELEVATED HIGHWAY**  
**W 16TH ST TO W 15TH ST**

Sheet < > of < >	ILLINOIS DEPARTMENT OF TRANSPORTATION
	F.A.I. 94/90 (DAN RYAN EXPRESSWAY)
	NB DAN RYAN ELEVATED BRIDGE
	REPAIR FROM 15TH TO 28TH STREETS
	EXISTING PLAN INFORMATION
	SN 016-1110
	SCALE: NTS
	DATE: 7/22/2005
	DRAWN BY:
	CHECKED BY:

REVISIONS	DATE
NAME	

FOR INFORMATION ONLY

BOWMAN, BARRETT & ASSOCIATES INC.  
CONSULTING ENGINEERS  
Chicago, Illinois  
312.228.0100  
www.bbainc.com