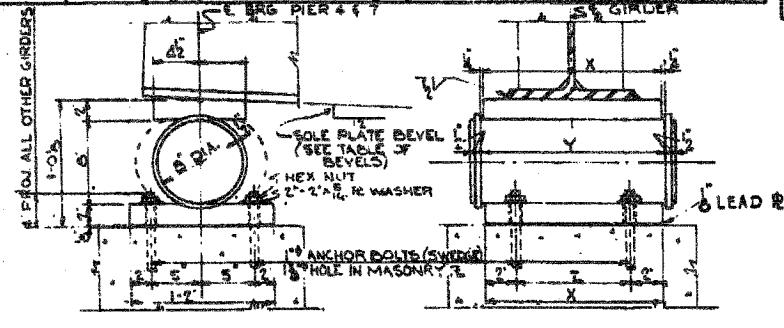
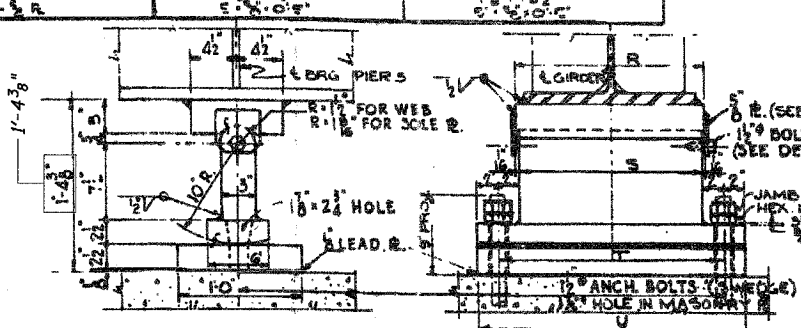


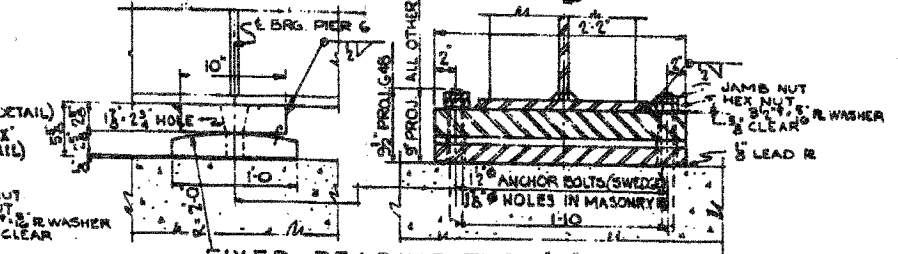
MATERIAL	TYPE F (6 REQ'D)	TYPE G (41 REQ'D)	TYPE H (7 REQ'D)	MATERIAL	TYPE J (3 REQ'D)	TYPE K (24 REQ'D)	MATERIAL	TYPE L (27 REQ'D)
SOLE PLATE	9" x 25" x 1/2"	9" x 25" x 1/2"	9" x 25" x 1/2"	SOLE PLATE	9" x 25" x 1/2"	9" x 25" x 1/2"	SOLE PLATE	10" x 25" x 1/2"
MASONRY R	14" x 2" x 11"	14" x 2" x 11"	14" x 2" x 11"	MASONRY R	12" x 2" x 11"	12" x 2" x 11"	MASONRY R	12" x 2" x 11"
ROCKER R	14" x 2" x 11"	14" x 2" x 11"	14" x 2" x 11"	ROCKER R	12" x 2" x 11"	12" x 2" x 11"	ROCKER R	12" x 2" x 11"
LEAD R	14" x 2" x 11"	14" x 2" x 11"	14" x 2" x 11"	LEAD R	12" x 2" x 11"	12" x 2" x 11"	LEAD R	12" x 2" x 11"
ANCHOR BOLTS	2" x 2" x 8"	2" x 2" x 8"	2" x 2" x 8"	ANCHOR BOLTS	2" x 2" x 8"	2" x 2" x 8"	ANCHOR BOLTS	2" x 2" x 8"
WASHERS	2" x 2" x 8"	2" x 2" x 8"	2" x 2" x 8"	WASHERS	2" x 2" x 8"	2" x 2" x 8"	WASHERS	2" x 2" x 8"
BOLTS	2" x 2" x 8"	2" x 2" x 8"	2" x 2" x 8"	BOLTS	2" x 2" x 8"	2" x 2" x 8"	BOLTS	2" x 2" x 8"
WASHERS	2" x 2" x 8"	2" x 2" x 8"	2" x 2" x 8"	WASHERS	2" x 2" x 8"	2" x 2" x 8"	WASHERS	2" x 2" x 8"



EXPANSION BEARING - TYPE F, G & H
SCALE: 1/2" = 1'-0"

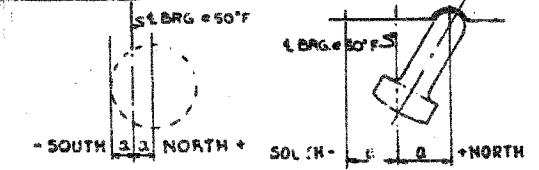


EXPANSION BEARING TYPE J & K
SCALE: 1/2" = 1'-0"

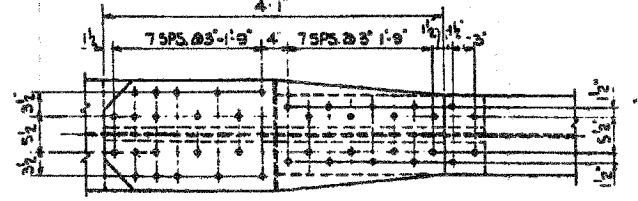


FIXED BEARING TYPE L
SCALE: 1/2" = 1'-0"

TYPE F	Y	Z
TYPE G	1'-9"	1'-4 1/2"
TYPE H	1'-6"	1'-1 1/2"
TYPE J	1'-9"	1'-0"

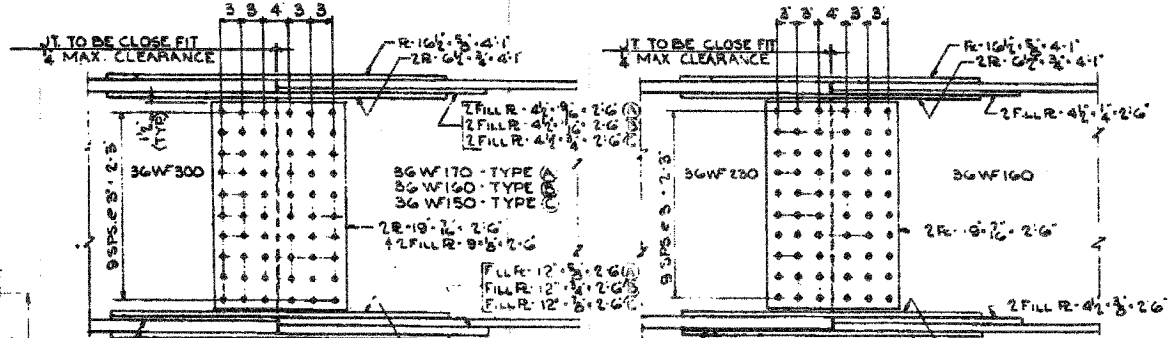


EXP. BRG. TYPE F, G & H EXP. BRG. TYPE J & K



TOP VIEW OF SPLICE - TYPICAL

EXP. BRG. TYPE	TEMPERATURE	110°	90°	70°	50°	30°	10°
TYPE F, G & H	PIER #4	0	0	0	0	0	0
	PIER #7	0	0	0	0	0	0
TYPE J & K	PIER #5	0	0	0	0	0	0

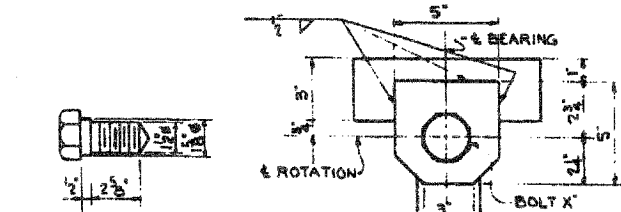


ELEVATION OF SPLICE - TYPE A, B, C

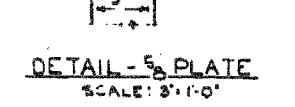
ELEVATION OF SPLICE - TYPE D

ELEVATION OF SPLICE - TYPE E

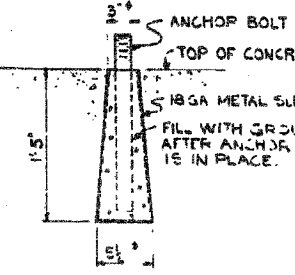
ELEVATION OF SPLICE - TYPE F



DETAIL - BOLT X
SCALE: 3/8" = 1'-0"



DETAIL - SOLE PLATE
SCALE: 3/8" = 1'-0"



ANCHOR BOLT SETTING
SCALE: 3/8" = 1'-0"

LOCATION	GIRDER NUMBER					
	41	48	50	55	59	67
PIER NO. 4	—	—	14" x 24" x 1/2"	14" x 24" x 1/2"	14" x 24" x 1/2"	—
PIER NO. 6	—	14" x 24" x 1/2"	—	—	—	—
PIER NO. 7	14" x 24" x 1/2"	14" x 24" x 1/2"	—	—	—	14" x 24" x 1/2"

TOTAL WEIGHT OF FILL PLATES = 234 LBS.

LOCATION	GIRDER NUMBER				
	41	42 to 55	64	58 to 66	67
PIER NO. 4	0	3/2	0	3/2	3/2
PIER NO. 7	0	0	3/2	0	0

BEARING TYPE	NUMBER REQUIRED	WT. OF STEEL PER BEARING, LBS.	TOTAL STEEL LBS.
F	6	648	3,888
G	41	360	14,760
H	7	478	3,346
J	3	790	2,370
K	24	676	16,224
L	27	465	12,555

LESS ANCHOR BOLTS AT PIER 7 = 540 LBS.

TOTAL WEIGHT OF BEARINGS = 60,782 LBS.

NOTE:
MATERIAL INCLUDED IN WEIGHT ON SMT. 522
ROCKER R AND WEB R FOR EXPANSION BRG TYPES J & K CAN BE GRADE 65-35 CARBON STEEL CASTING.
FLANGE SPLICES — 5/8" HIGH STRENGTH BOLTS.
WEB SPLICES — 3/4" HIGH STRENGTH BOLTS.
ANCHOR BOLTS AT PIER 7 PROVIDED IN CONTRACT S 2825.3-1 H.

SPLICE TYPE	NUMBER REQUIRED	WT. OF STEEL PER SPLICE, LBS.	TOTAL STEEL LBS.
A	2	997	1,994
B	3	1,020	3,060
C	3	1,043	3,129
D	83	922	76,526
E	4	931	3,724
F	13	926	12,038

TOTAL WEIGHT OF SPLICES = 100,471 LBS.

CITY OF CHICAGO
DEPARTMENT OF PUBLIC WORKS
BUREAU OF ENGINEERING
SOUTH ROUTE SUPERHIGHWAY
ELEVATED HIGHWAY
W. 16 TH ST. TO W. 15 TH ST.
SECTION 5-2825.3-2H
BEARINGS & SPLICE DETAILS
UNIT 2

Des. By N.S.W.
Drawn By W.C.K.
Checked By R.S.
In Charge N.S.WULF
Approved By L.N.RIAN

BOWMAN, BARRETT & ASSOCIATES INC.
CONSULTING ENGINEERS
Chicago, Illinois
312.228.0100
www.bbainc.com

FOR INFORMATION ONLY

SHEET	<	>	of	<	>
REVISIONS		DATE			
NAME		DATE			

ILLINOIS DEPARTMENT OF TRANSPORTATION
F.A.I. 94/90 (DAN RYAN EXPRESSWAY)
NB DAN RYAN ELEVATED BRIDGE
REPAIR FROM 15TH TO 28TH STREETS
EXISTING PLAN INFORMATION
SN 016-1110
SCALE: NTS
DATE: 7/22/2005
DRAWN BY: BDC
CHECKED BY: BLU