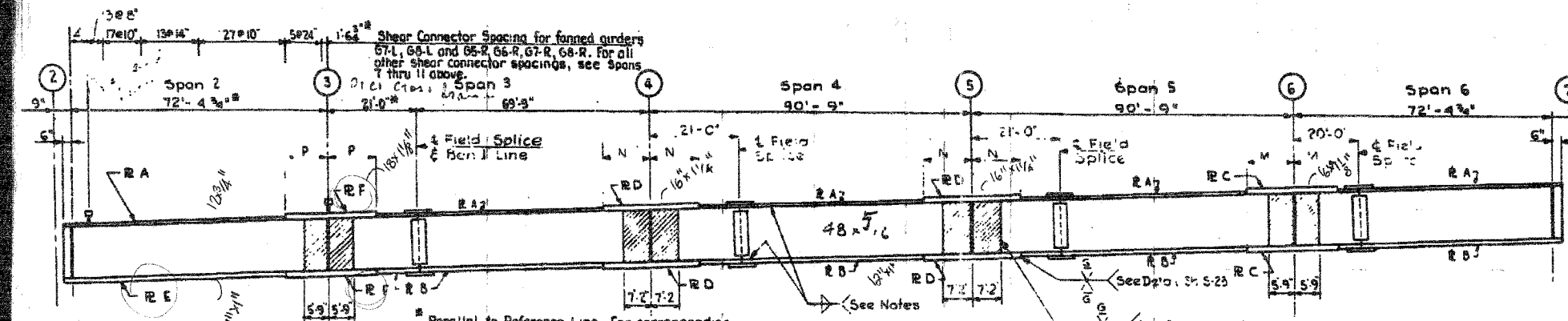
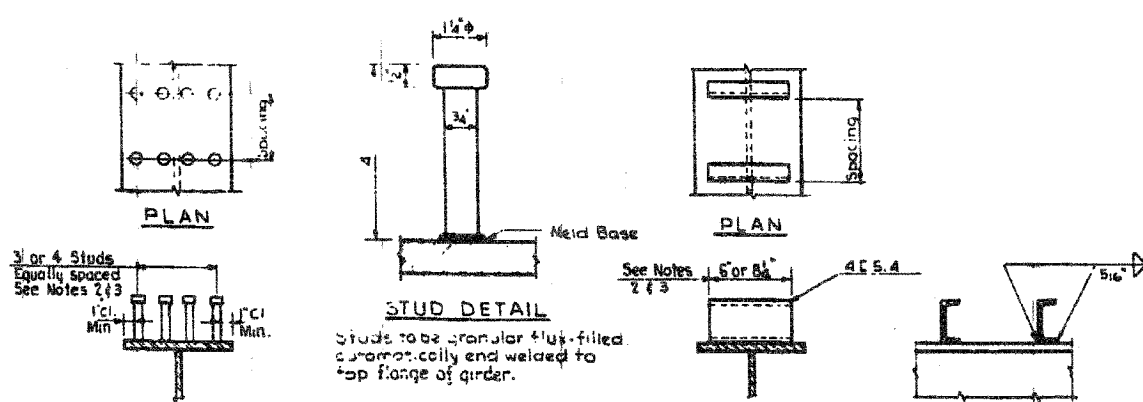
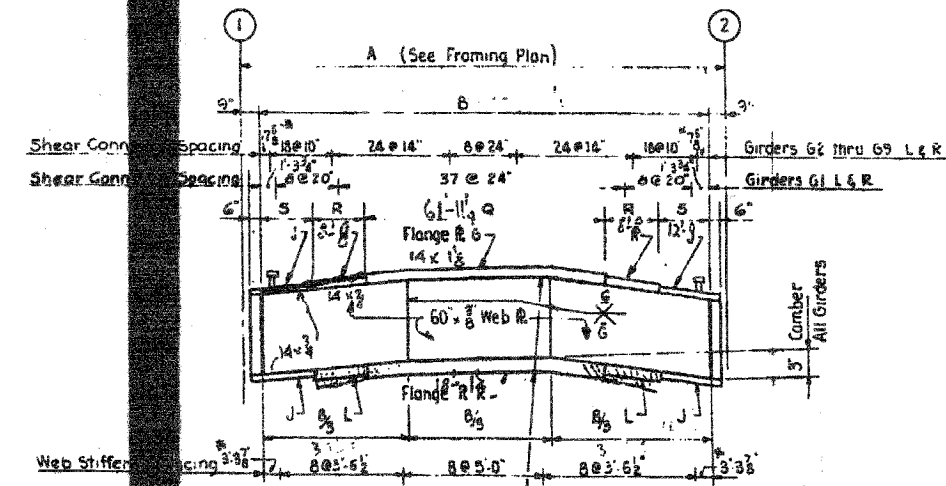


| GIRDER | B | DIMENSION | | | | PLATE SIZE | | | | | |
|------------|-------|-----------|------|------|----------|------------|--------|----------|----------|--|--|
| | | Q | R | S | G | H | J | K | L | | |
| G1-L | 103-3 | 61-11 1/2 | 8-8 | 12-0 | 14-1 1/2 | 14-3/4 | 14-3/4 | 18-1 1/2 | 18-1 1/2 | | |
| G2,3-(L&R) | 103-3 | 63-11 1/2 | 10-5 | 9-3 | 14-1 1/2 | 14-3/4 | 14-3/4 | 18-1 1/2 | 18-1 1/2 | | |
| G4,5-(L&R) | 103-3 | 61-11 1/2 | 10-5 | 10-3 | 14-1 1/2 | 14-3/4 | 14-3/4 | 18-1 1/2 | 18-1 1/2 | | |
| G6-L | 103-3 | 65-11 1/2 | 10-4 | 9-4 | 14-1 1/2 | 14-3/4 | 14-3/4 | 18-1 1/2 | 18-1 1/2 | | |
| G7-L | 103-3 | 63-11 1/2 | 10-4 | 9-4 | 14-1 1/2 | 14-3/4 | 14-3/4 | 18-1 1/2 | 18-1 1/2 | | |
| G8-L | 103-4 | 64-0 | 10-4 | 9-4 | 14-1 1/2 | 14-3/4 | 14-3/4 | 18-1 1/2 | 18-1 1/2 | | |
| G9-L | 103-5 | 64-1 | 9-8 | 10-0 | 14-1 1/2 | 14-3/4 | 14-3/4 | 18-1 1/2 | 18-1 1/2 | | |
| G6-R | 103-3 | 63-11 1/2 | 11-0 | 8-8 | 14-1 1/2 | 14-3/4 | 14-3/4 | 18-1 1/2 | 18-1 1/2 | | |
| G7-R | 103-3 | 63-11 1/2 | 11-0 | 8-8 | 14-1 1/2 | 14-3/4 | 14-3/4 | 18-1 1/2 | 18-1 1/2 | | |
| G8-R | 103-4 | 64-0 | 11-0 | 8-8 | 14-1 1/2 | 14-3/4 | 14-3/4 | 18-1 1/2 | 18-1 1/2 | | |
| G9-R | 103-4 | 64-0 | 9-8 | 10-0 | 14-1 1/2 | 14-3/4 | 14-3/4 | 18-1 1/2 | 18-1 1/2 | | |
| G1-R | 103-3 | 61-11 1/2 | 7-8 | 13-0 | 14-3/4 | 14-3/4 | 14-3/4 | 18-1 1/2 | 18-1 1/2 | | |



| UNIT | GIRDER | PLATE A | PLATE B | PLATE C | | PLATE D | | PLATE E | PLATE F |
|-----------------|--------------|---------|----------|----------|----------|----------|------|----------|---------|
| | | | | SIZE | M | SIZE | N | | |
| SPANS 7 THRU 11 | G1-L | 10-3 | 12-3 | 16-3 | 10-2 | 16-1 | 11-2 | | |
| | G2,3-(R&L) | 12-3 | 12-1 | 16-1 | 10-8 | 16-1 1/2 | 12-0 | | |
| | G4,5-(R&L) | 12-3 | 12-1 | 16-1 | 9-9 | 16-1 | 11-2 | | |
| SPANS 2 THRU 6 | G6,7,8-(R&L) | 12-3 | 12-1 | 16-1 1/2 | 11-4 | 16-1 1/2 | 12-6 | | |
| | G1-R | 10-3 | 12-3 | 16-3 | 8-9 | 16-3 | 10-0 | | |
| | G1-L | 10-3 | 12-3 | 16-3 | 8-9 | 16-3 | 10-0 | 12-3 | 8-9 |
| | G2,3-(R&L) | 12-3 | 12-1 | 16-1 | 10-8 | 16-1 1/2 | 12-0 | 12-3 | 16-3 |
| | G4-(R&L) | 12-3 | 12-1 | 16-1 | 9-9 | 16-1 | 11-2 | 12-3 | 16-3 |
| | G5-L | 12-3 | 12-1 | 16-1 | 11-4 | 16-1 1/2 | 11-2 | 12-3 | 16-3 |
| G6-L | 12-3 | 12-1 | 16-1 1/2 | 11-4 | 16-1 1/2 | 12-6 | 12-1 | 16-1 1/2 | |
| G7,8-L | 12-3 | 12-1 | 16-1 1/2 | 11-4 | 16-1 1/2 | 12-6 | 12-1 | 16-1 1/2 | |
| G5-R | 12-3 | 12-1 | 16-1 | 9-9 | 16-1 | 11-2 | 12-1 | 16-1 1/2 | |
| G6,7,8-R | 12-3 | 12-1 | 16-1 1/2 | 11-4 | 16-1 1/2 | 12-6 | 14-1 | 18-1 1/2 | |

Continuous Span Web Plates - Spans (2 thru 11)
 Positive Moment Areas all Girders - 48 x 3/4"
 Negative Moment Areas (Shown Cross-Hatched)
 Girders G2 thru G8 (L&R) - 48 x 3/4"
 Girders G1-(L&R) - 48 x 3/8"



- NOTES**
- Studs or channels may be used at the option of the contractor.
 - Shear Connector locations at flange splice plates

BOWMAN, BARRETT & ASSOCIATES INC.
 CONSULTING ENGINEERS
 Chicago, Illinois
 312.228.0100
 www.bbainc.com

FOR INFORMATION ONLY

Sheet < > of < >

| REVISIONS | NAME | DATE |
|-----------|------|------|
| | | |
| | | |
| | | |
| | | |

ILLINOIS DEPARTMENT OF TRANSPORTATION
 F.A.I. 94/90 (DAN RYAN EXPRESSWAY)
 NB DAN RYAN ELEVATED BRIDGE
 REPAIR FROM 15TH TO 28TH STREETS
 EXISTING PLAN INFORMATION
 SN 016-1111

SCALE: NTS
 DATE: 7/22/2005
 DRAWN BY: BDC
 CHECKED BY: BLU

CITY OF CHICAGO
 DEPARTMENT OF PUBLIC WORKS
 BUREAU OF ENGINEERING
SOUTH ROUTE SUPERHIGHWAY
 SECTION NO. (S-2525.3-SH
 S-2525.3-JHW)
W. 106 STREET TO W. 146 STREET
GIRDER DETAILS
 CONSOBER, TOWNSEND & ASSOCIATES
 CONSULTING ENGINEERS
 CHICAGO, ILLINOIS
 DESIGNED BY E.L.F. CHECKED BY