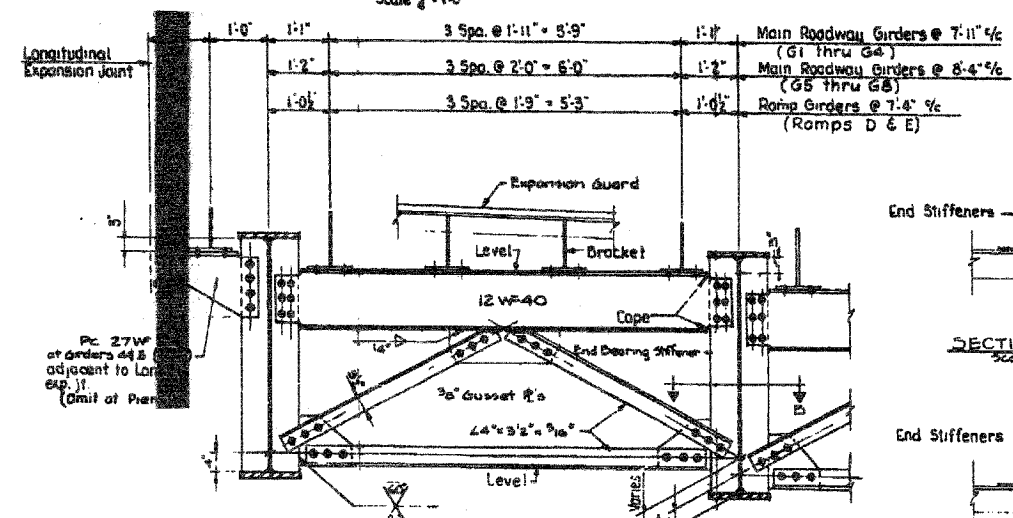
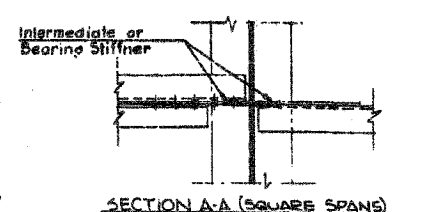


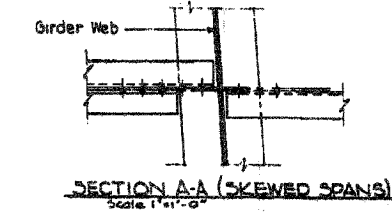
INTERMEDIATE CROSS FRAME (TYPICAL)  
Scale 1/4" = 1'-0"



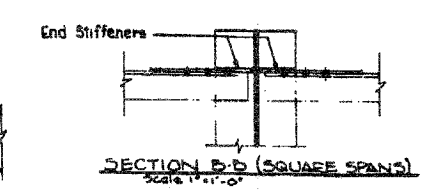
END CROSS FRAME (TYPICAL)  
Scale 1/4" = 1'-0"



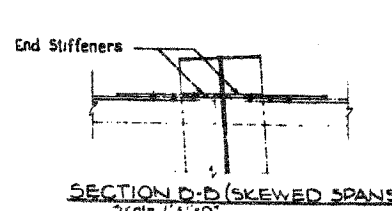
SECTION A-A (SQUARE SPANS)  
Scale 1/4" = 1'-0"



SECTION A-A (SKEWED SPANS)  
Scale 1/4" = 1'-0"



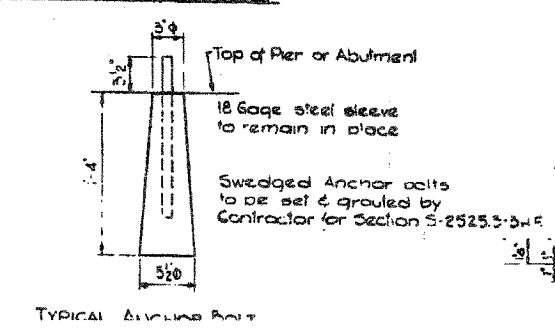
SECTION B-B (SQUARE SPANS)  
Scale 1/4" = 1'-0"



SECTION B-B (SKEWED SPANS)  
Scale 1/4" = 1'-0"

CROSS FRAME DETAILS

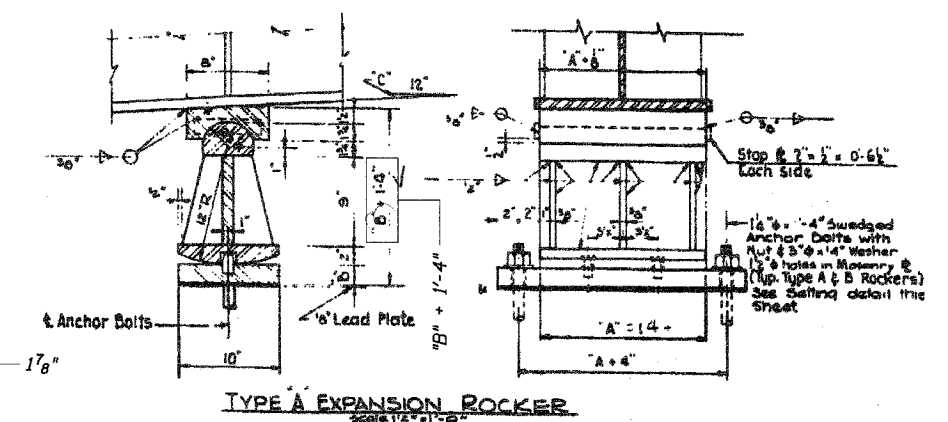
**NOTES**  
Expansion Guard bracket spacings shown are typical at locations where girders are parallel.  
Dimensions to be adjusted by detailer where girders are formed. Hold bracket spacings to 2'3" max. See Framing Plans for 1/2" dimensions of laminated girders.  
Special bracket spacing dimensions to be used at north end of contract to meet expansion guard supplied by others. See Expansion Guard Details Sheet 5-27.  
Intermediate Cross Frames and End Cross Frames shown are typical for simple spans & continuous spans. Pier cross frames typical are at interior piers of continuous spans. See Framing Plans & Girder Details for girder dimensions & spacings.



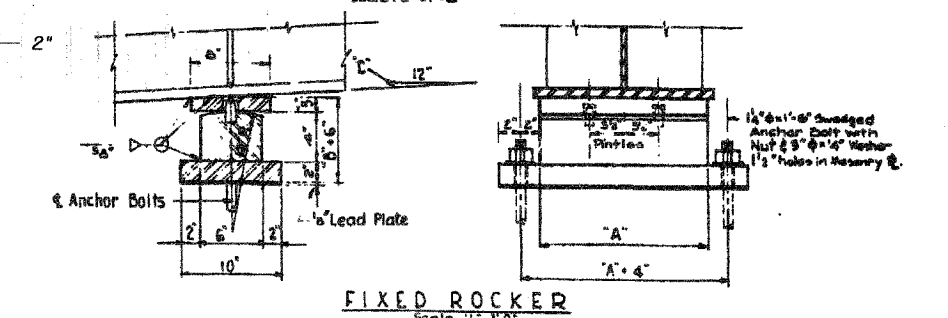
TYPICAL ANCHOR BOLT

ROCKER SCHEDULE				
Girder	Type	"A"	"B"	"C"
<b>PIER 1- SPAN 1</b>				
G1 - L&R	Fixed	10'	1 1/2'	1 1/2'
G2,3, L&R	Fixed	10'	1 1/2'	1 1/2'
G4,5, L&R	Fixed	10'	1 1/2'	1 1/2'
G6-9, L&R	Fixed	10'	1 1/2'	1 1/2'
<b>PIER 2- SPAN 2</b>				
G1 - L&R	B	11'	1 1/2'	1 1/2'
G2,3, L&R	B	11'	1 1/2'	1 1/2'
G4,5, L&R	B	11'	1 1/2'	1 1/2'
G6-9, L&R	B	11'	1 1/2'	1 1/2'
<b>PIER 2- SPAN 2</b>				
G1 - L&R	B	10'	1 1/2'	1 1/2'
G2,3, L&R	B	10'	1 1/2'	1 1/2'
G4,5, L&R	B	10'	1 1/2'	1 1/2'
G6-9, L&R	B	10'	1 1/2'	1 1/2'
<b>PIERS 3,4,6,8,9 &amp; 11</b>				
G1 - L&R	A	11'	1 1/2'	1 1/2'
G2,3, L&R	A	11'	1 1/2'	1 1/2'
G4,5, L&R	A	11'	1 1/2'	1 1/2'
G6-9, L&R	A	11'	1 1/2'	1 1/2'
<b>PIER 7 &amp; PIER BY OTHERS</b>				
G1 - L&R	B	10'	1 1/2'	1 1/2'
G2,3, L&R	B	10'	1 1/2'	1 1/2'
G4,5, L&R	B	10'	1 1/2'	1 1/2'
G6-9, L&R	B	10'	1 1/2'	1 1/2'
<b>PIERS 5 &amp; 10</b>				
G1 - L&R	Fixed	11'	1 1/2'	1 1/2'
G2,3, L&R	Fixed	13'	1 1/2'	1 1/2'
G4,5, L&R	Fixed	12'	1 1/2'	1 1/2'
G6-9, L&R	Fixed	14'	1 1/2'	1 1/2'
<b>RAMP E</b>				
All Girders	B	10'	1 1/2'	1 1/2'
<b>PIERS 6,8,9, &amp; 11</b>				
All Girders	A	14'	2'	1 1/2'
<b>PIERS 7 &amp; 10</b>				
All Girders	Fixed	14'	1 1/2'	1 1/2'
<b>PIER E0</b>				
All Girders	B	10'	1 1/2'	1 1/2'
<b>RAMP D</b>				
<b>ABUTMENT D7 &amp; PIER BY OTHERS</b>				
All Girders	B	10'	1 1/2'	1 1/2'
<b>PIER: D8, D9 &amp; D11</b>				
All Girders	A	14'	2'	1 1/2'
<b>PIER D10</b>				
All Girders	Fixed	14'	1 1/2'	1 1/2'

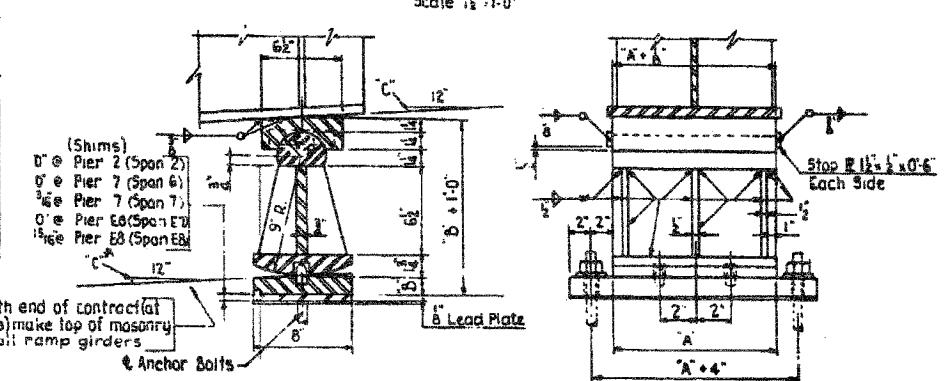
Note: At North end of contract (at Pier by Others) make top of masonry plate level, all ramp girders



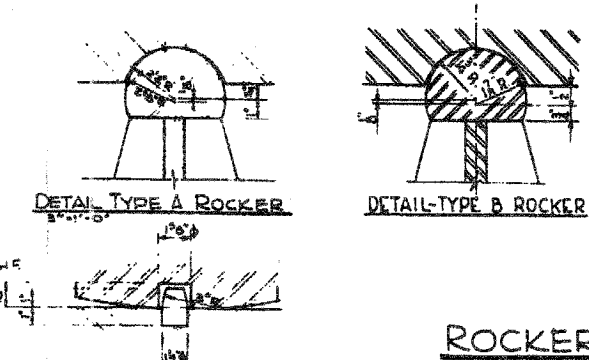
TYPE A EXPANSION ROCKER  
Scale 1/2" = 1'-0"



FIXED ROCKER  
Scale 1/2" = 1'-0"



TYPE B EXPANSION ROCKER



ROCKER DETAILS

CITY OF CHICAGO  
DEPARTMENT OF PUBLIC WORKS  
BUREAU OF ENGINEERING  
SOUTH ROUTE SUPERHIGHWAY  
SECTION NO. 13-1555.3-BH  
13-1555.3-3HF  
W. 156 STREET TO W. 158 STREET  
**CROSS FRAMES & ROCKERS**  
CONSOER, TOWNSEND & ASSOCIATES  
CONSULTING ENGINEERS  
CHICAGO, ILLINOIS  
DESIGNED BY RLF CHECKED BY  
DRAWN BY IN CHARGE OF H.S.M.

Sheet < > of < >

REVISIONS	
NAME	DATE

ILLINOIS DEPARTMENT OF TRANSPORTATION  
F.A.I. 94/90 (DAN RYAN EXPRESSWAY)  
NB DAN RYAN ELEVATED BRIDGE  
REPAIR FROM 15TH TO 28TH STREETS  
EXISTING PLAN INFORMATION  
SN 016-1111  
SCALE: NTS DRAWN BY: BDC  
DATE: 7/22/2005 CHECKED BY: BLU

FOR INFORMATION ONLY

BOWMAN, BARRETT & ASSOCIATES INC.  
CONSULTING ENGINEERS  
Chicago, Illinois  
312.228.0100  
www.bbainc.com

7/19/2005 11:53:33 AM