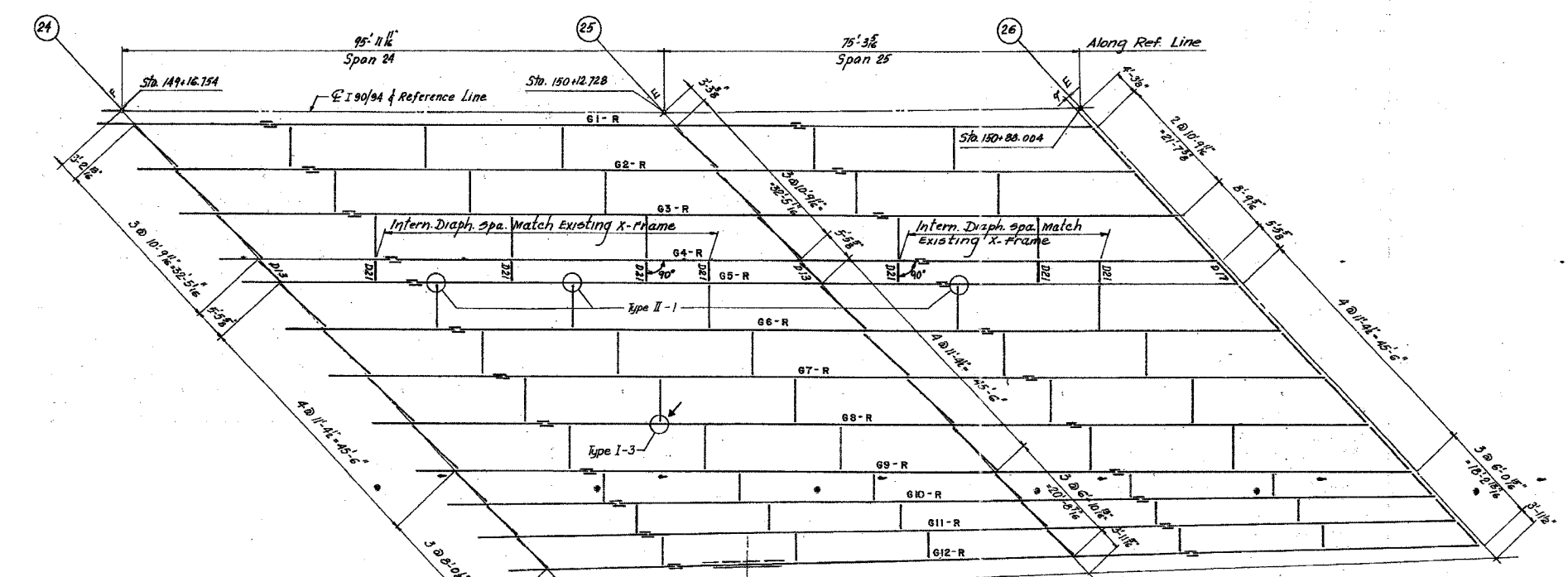
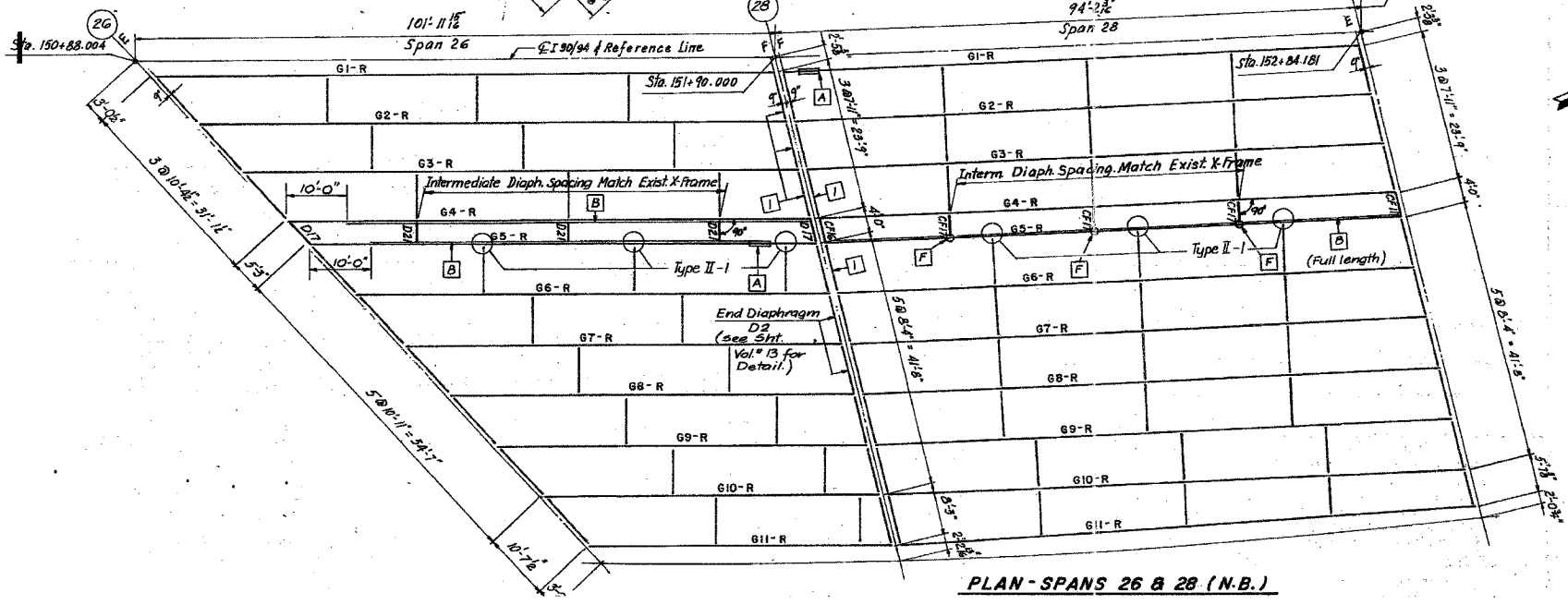


F.A.I.	SECTION	COUNTY	TOTAL SHEETS	SHEET NO.
94/90	2003-028F	COOK	419	332
STA.	TO STA.			
FED. ROAD DIST. NO.	ILLINOIS	FED. AID PROJECT		

62580



**PLAN-SPANS 24 & 25 (N.B.)**



**PLAN-SPANS 26 & 28 (N.B.)**

- [A] - For Repair, Girder Web near Bearing Stiffener, see Sht. SR5, Vol. #13 for Detail.
- [B] - Longitudinal Reinforcing Repair (side indicated), see Sht. SR5, Vol. #13 for Detail.
- [F] - Special Cross Frame Connection of longitudinal Reinforcing, see Sht. SR6, Vol. #13 for Detail.



**LEGEND:**

- Denotes Existing Cracked Weld location at transverse stiffener to underside of top Flange (typ)
- TYPE I** - Detail Number  
Fatigue Retrofit Repair, Cross-Frame at top Flange (See sheet D38)
- TYPE II** - Detail Number  
Retrofit, Cross-Frame at Bottom Flange (See sheet D38)
- I** - End Cross Frame - Type 2, see Sht. SR3, Vol. #13 for Detail.

ALL NEW MATERIALS SHOWN ON THIS SHEET ARE FURNISHED UNDER A SEPARATE STEEL FABRICATION CONTRACT (SECTION 1988-003F), UNLESS NOTED OTHERWISE.

**STATE OF ILLINOIS**  
**DEPARTMENT OF TRANSPORTATION**  
 F.A.I. ROUTE 90/94 (DAN RYAN EXPRESSWAY)  
 SECTION 1985-077 B-R-COOK COUNTY  
 N.B. MAINLINE RECONSTRUCTION  
 STRUCTURE 016-1112(MAINLINE)  
 FRAMING PLAN SPANS 26 TO 28

Scale: NONE  
 Date: AUGUST, 1988  
 Drawn By: J.G.  
 Checked By: M.M.  
**ENVIRODYNE ENGINEERS INC.**  
 Chicago, Illinois

REVISIONS	NAME	DATE

ILLINOIS DEPARTMENT OF TRANSPORTATION  
 F.A.I. 94/90 (DAN RYAN EXPRESSWAY)  
 NB DAN RYAN ELEVATED BRIDGE  
 REPAIR FROM 15TH TO 28TH STREETS  
 EXISTING PLAN INFORMATION  
 SN 016-1112

SCALE: NTS  
 DATE: 7/22/2005  
 DRAWN BY: BDC  
 CHECKED BY: BLU

BOWMAN, BARRETT & ASSOCIATES INC.  
 CONSULTING ENGINEERS  
 Chicago, Illinois  
 312.228.0100  
 www.bbainc.com

FOR INFORMATION ONLY

7/19/2005 10:53 AM