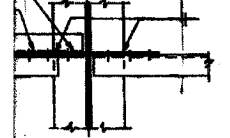
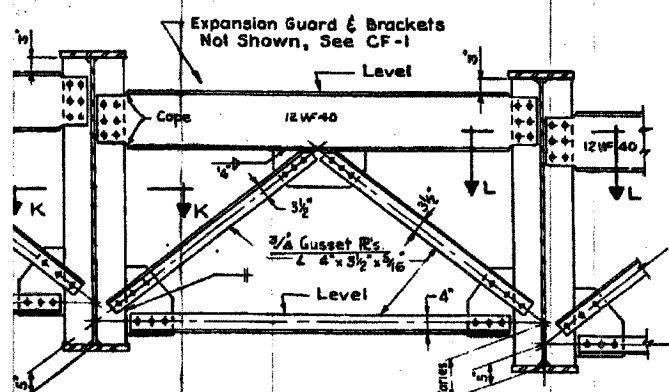


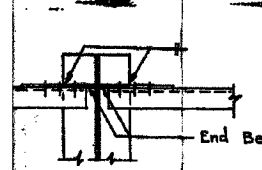
INTERMEDIATE CROSS FRAME CF-6
(Square or slightly skewed connections 54" or 60" web girders)



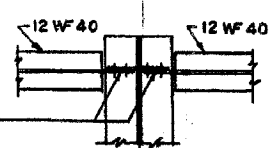
SECTION H-H



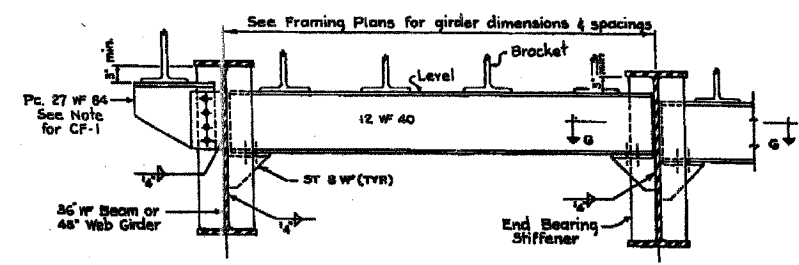
END CROSS FRAME CF-7
(Square or slightly skewed connections 54" or 60" web girders)



SECTION K-K

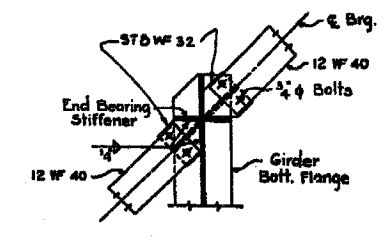


SECTION L-L

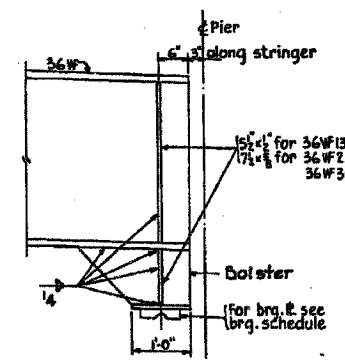


END DIAPHRAGMS D1
(Skewed connection to 36 W beams & 48" web girders)

Note: Special 5/8" x 1/2" End Bearing Stiffeners shall be provided at skewed ends of 36 W Beams for end diaphragm connections.

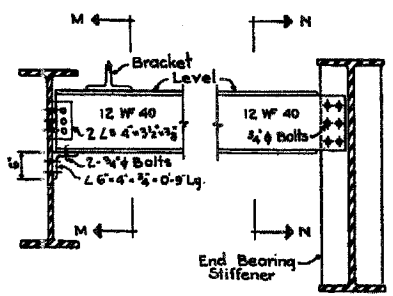


SECTION O-O
(Skew connections)

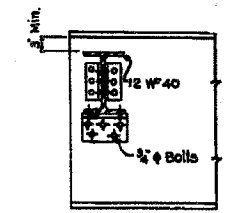


Span	Stringer	Size	Bolster
27	G1-L thru G8-L	36 W 135	ST16 W 65
27	G9-L	36 W 230	ST12 W 65
27	G10-L thru G13-L	36 W 300	ST12 W 65
26	G6-R, G7-R, G8-R	36 W 300	ST12 W 65
26	G9-R, G10-R	36 W 230	ST12 W 65
21	G1-R thru G4-R (North End)	36 W 135	ST12 W 50
21	G1-R thru G4-R (South End)	36 W 135	ST15 W 56

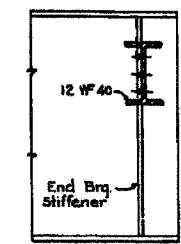
BEAM BOLSTER DETAIL



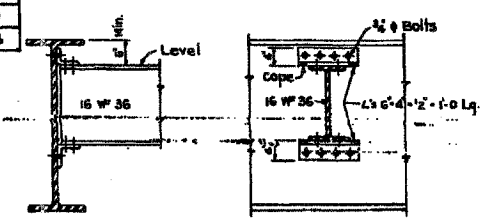
END DIAPHRAGMS D2
(Square or slightly skewed connection to 36 W beams & 48" web girders)



SECTION M-M



SECTION N-N



INTERIOR DIAPHRAGMS D3
(Square or slightly skewed connection to 36 W beams & 48" web girders)

CITY OF CHICAGO
DEPARTMENT OF PUBLIC WORKS
BUREAU OF ENGINEERING
SOUTH ROUTE SUPERHIGHWAY
SECTION NO. 15-2825.3-4H
15-2825.3-4HF
W. CERMAK RD. TO W. 18th STREET
STRUCTURAL STEEL DETAILS
CONSOER, TOWNSEND & ASSOCIATES
CONSULTING ENGINEERS
CHICAGO, ILLINOIS

BOWMAN, BARRETT & ASSOCIATES INC.
CONSULTING ENGINEERS
Chicago, Illinois
312.228.0100
www.bbndainc.com

FOR INFORMATION ONLY

REVISIONS	NAME	DATE

ILLINOIS DEPARTMENT OF TRANSPORTATION
F.A.I. 94/90 (DAN RYAN EXPRESSWAY)
NB DAN RYAN ELEVATED BRIDGE
REPAIR FROM 15TH TO 28TH STREETS
EXISTING PLAN INFORMATION
SN 016-1112
SCALE: NTS
DATE: 7/22/2005
DRAWN BY: BDC
CHECKED BY: BLU