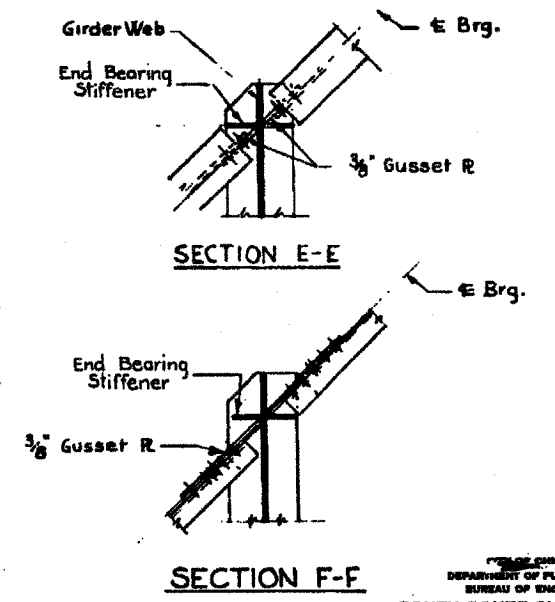
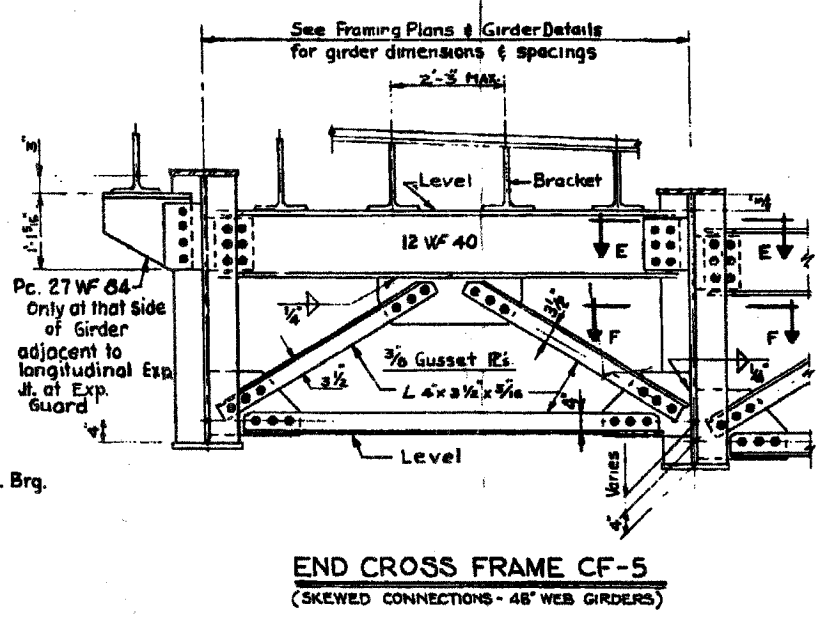
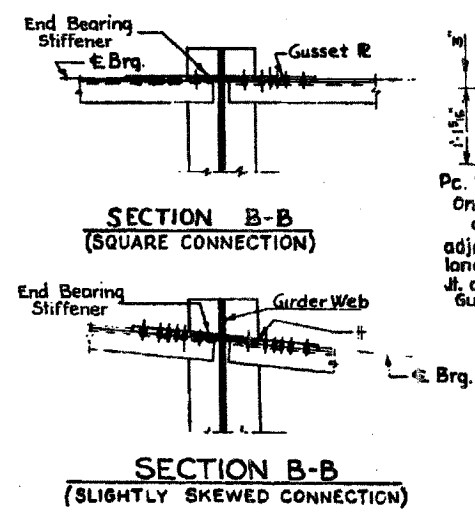
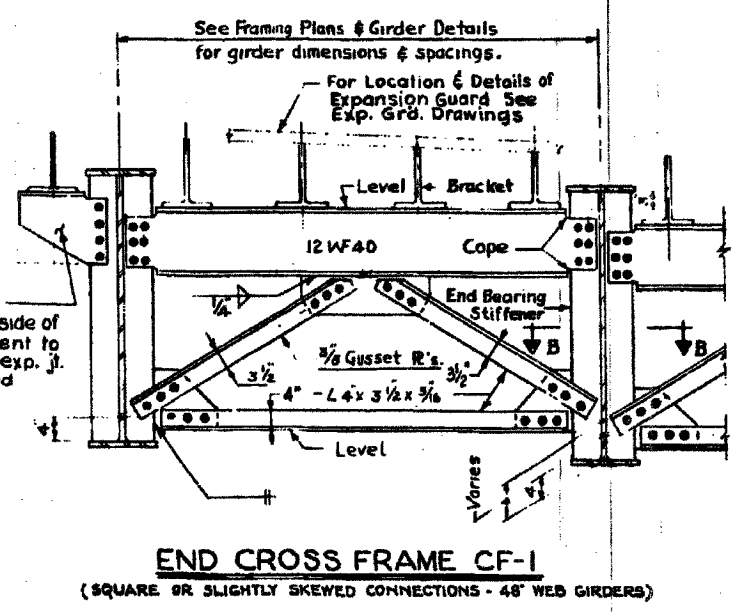
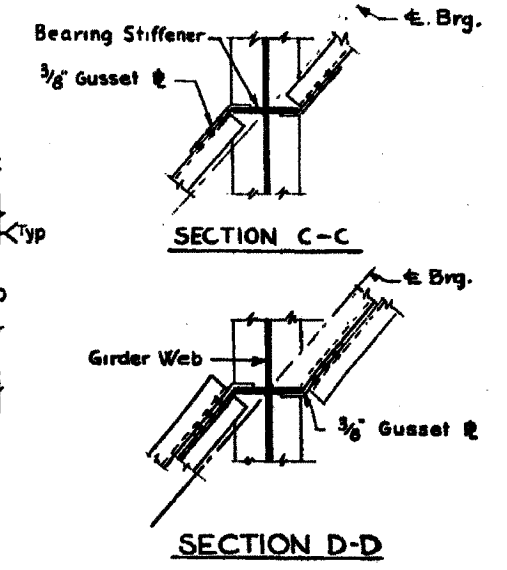
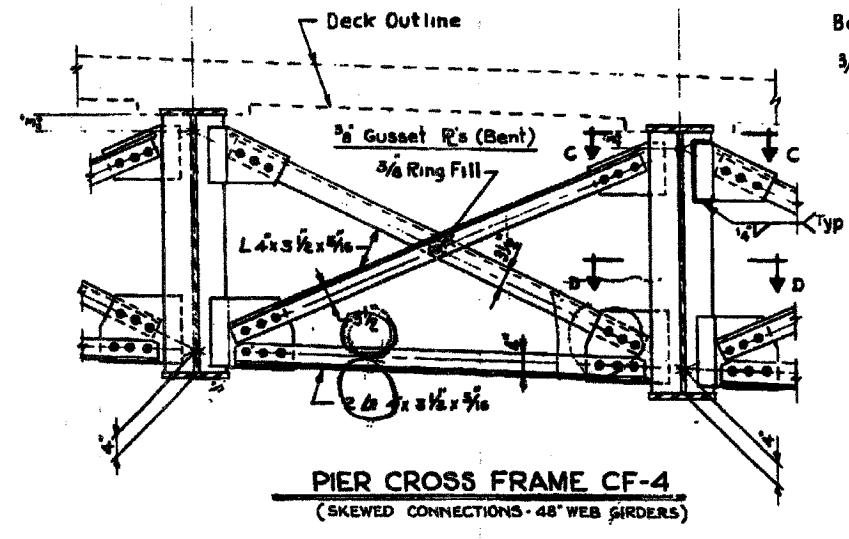
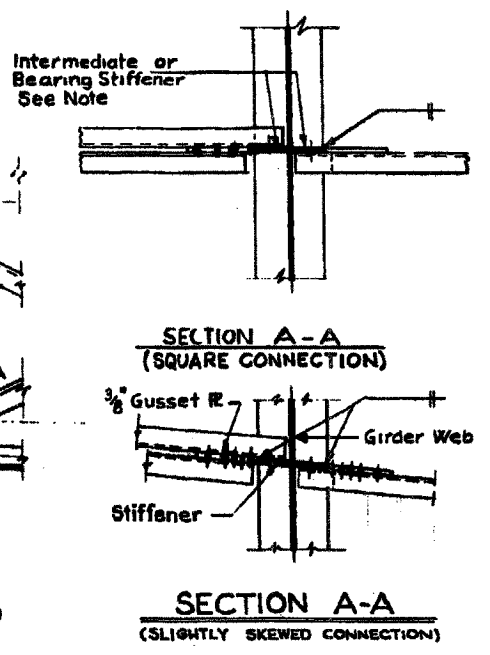
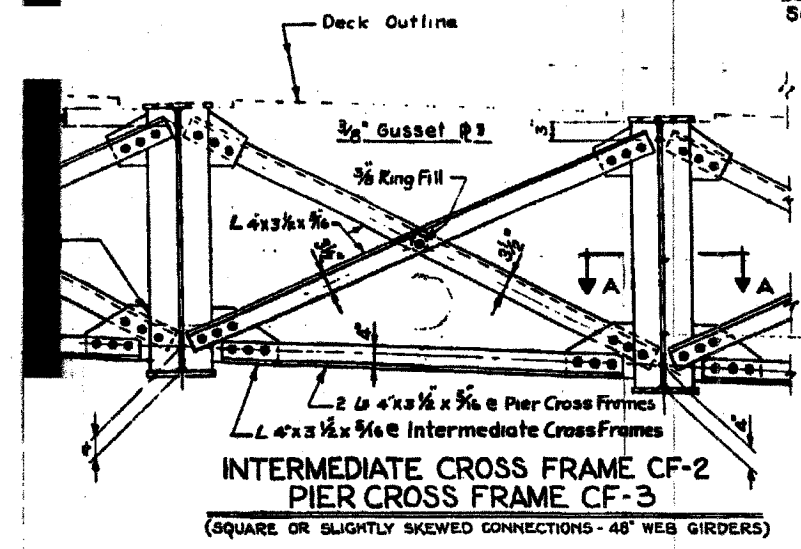


F.A.I.	SECTION	COUNTY	TOTAL SHEETS	SHEET NO.
94/90	2003-028F	COOK	419	337
STA.	TO STA.			
FED. ROAD DIST. NO.	ILLINOIS	FED. AID PROJECT		

62580

Intermediate Cross Frames shall be connected to bearing stiffeners, relocated to suit. Where a relocation in excess of 6" is required, additional stiffeners shall be provided for cross frame connections.



Pc. 27 WF 84 only at that side of girder adjacent to longitudinal Exp. Grd. at Exp. Guard

BOWMAN, BARRETT & ASSOCIATES INC.
CONSULTING ENGINEERS
Chicago, Illinois
312.228.0100
www.bbainc.com

FOR INFORMATION ONLY

REVISIONS	NAME	DATE

ILLINOIS DEPARTMENT OF TRANSPORTATION
F.A.I. 94/90 (DAN RYAN EXPRESSWAY)
NB DAN RYAN ELEVATED BRIDGE
REPAIR FROM 15TH TO 28TH STREETS
EXISTING PLAN INFORMATION
SN 016-1112
SCALE: NTS
DATE: 7/22/2005
DRAWN BY: BDC
CHECKED BY: BLU

OFFICE OF CHIEF ENGINEER
DEPARTMENT OF PUBLIC WORKS
BUREAU OF ENGINEERING
SOUTH ROUTE SUPERHIGHWAY
SECTION NO. 03-282.3-4H
06-282.3-4HF
W. CERMAK RD. TO W. 15th STREET
STRUCTURAL STEEL DETAILS
CONNER, TOWNSEND & ASSOCIATES
CONSULTING ENGINEERS