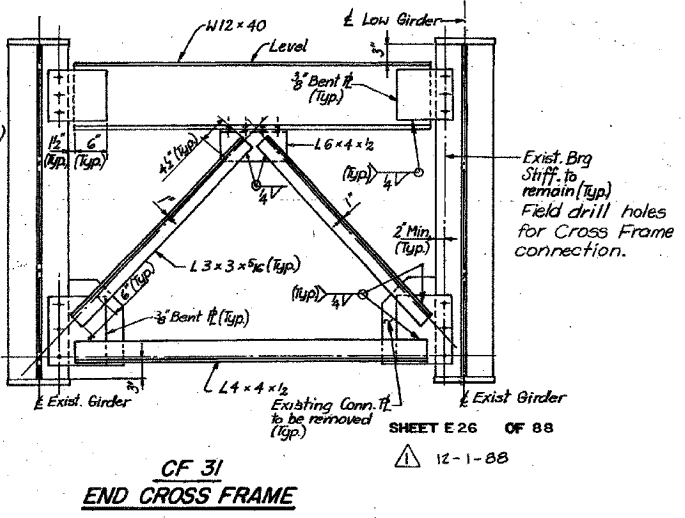
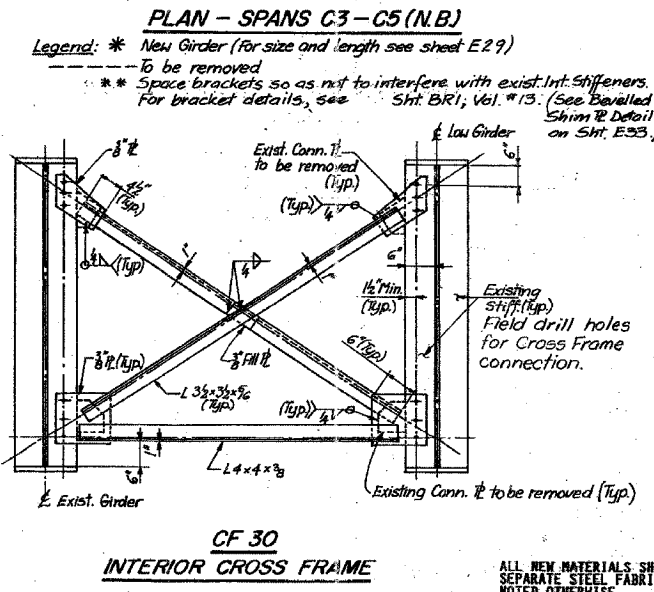
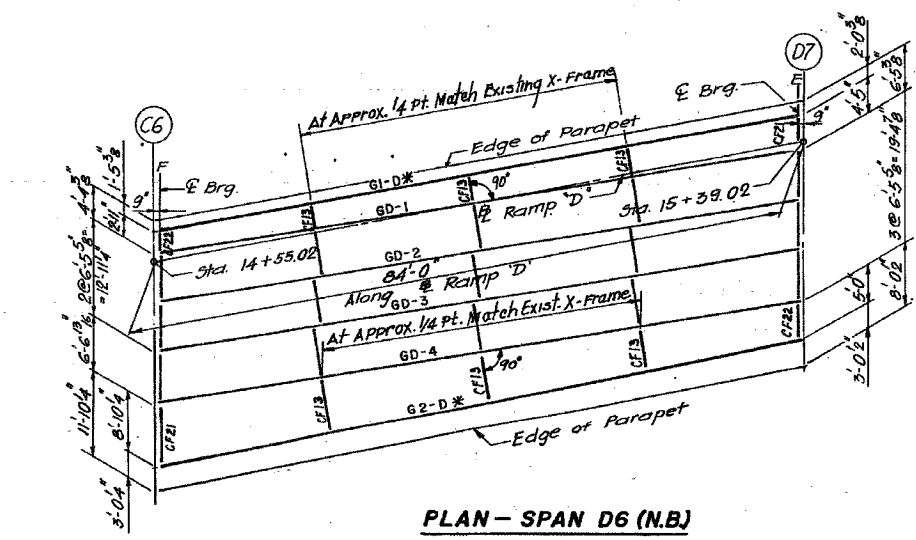
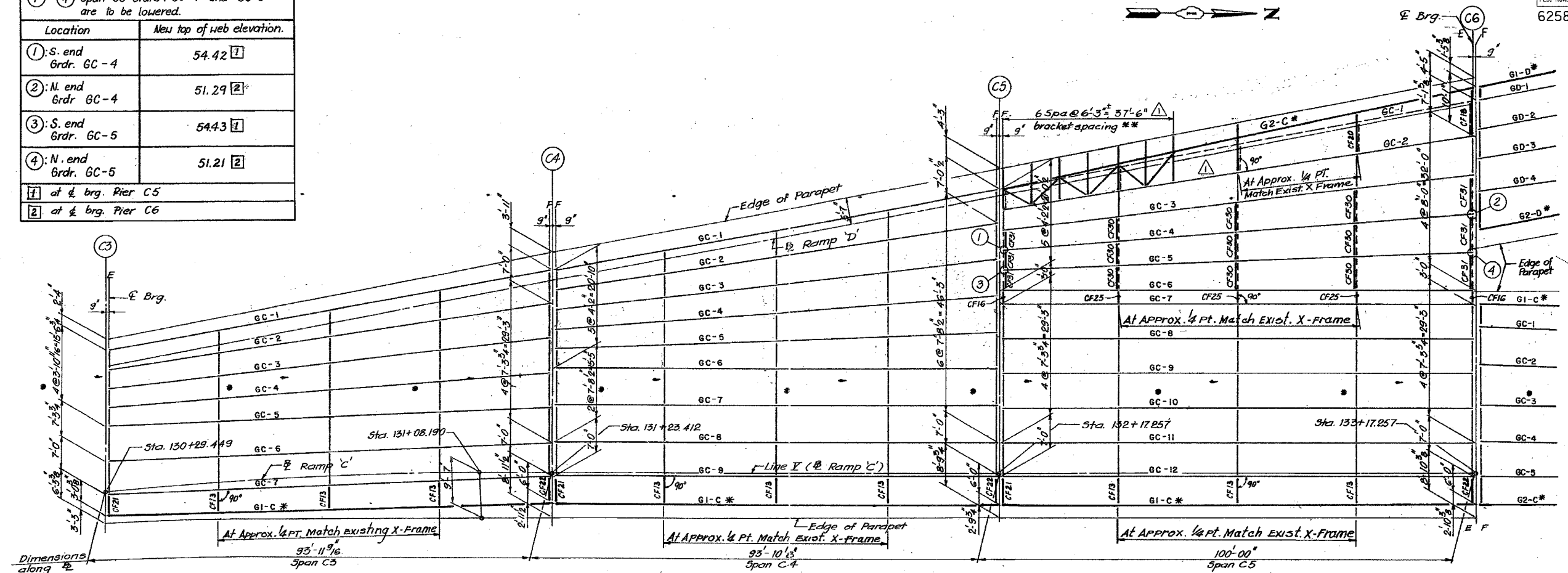


①-④ Span C5 Grdrs. GC-4 and GC-5 are to be lowered.	
Location	New top of web elevation.
①: S. end Grdr. GC-4	54.42 [1]
②: N. end Grdr. GC-4	51.29 [2]
③: S. end Grdr. GC-5	54.43 [1]
④: N. end Grdr. GC-5	51.21 [2]
[1]	at & brg. Pier C5
[2]	at & brg. Pier C6



**Legend:** \* New Girder (For size and length see sheet E29)  
 - to be removed  
 \*\* Space brackets so as not to interfere with exist. Int. stiffeners. For bracket details, see Sht. BR1, Vol. #13. (See Bevelled Shim Detail on Sht. E33.)

STATE OF ILLINOIS  
 DEPARTMENT OF TRANSPORTATION  
 E.A.I. ROUTE 90/94 (DAN RYAN EXPRESSWAY)  
 SECTION 1985-077 B-R-COOK COUNTY  
 N.B. MAINLINE RECONSTRUCTION  
 STRUCTURE 016-1113 (RAMP C & RAMP D)  
 FRAMING PLAN SPANS C3 TO C5 & D6  
 Scale: NONE Date: AUGUST, 1988 Drawn By: J.G. Checked By: M.M.  
 ENVIRODYNE ENGINEERS INC.  
 Chicago, Illinois

REVISIONS	NAME	DATE

ILLINOIS DEPARTMENT OF TRANSPORTATION  
 F.A.I. 94/90 (DAN RYAN EXPRESSWAY)  
 NB DAN RYAN ELEVATED BRIDGE  
 REPAIR FROM 15TH TO 28TH STREETS  
 EXISTING PLAN INFORMATION  
 SN 016-1113  
 SCALE: NTS DATE: 7/22/2005 DRAWN BY: BDC CHECKED BY: BLU

FOR INFORMATION ONLY

BOWMAN, BARRETT & ASSOCIATES INC.  
 CONSULTING ENGINEERS  
 Chicago, Illinois  
 312.228.0100  
 www.bbainc.com