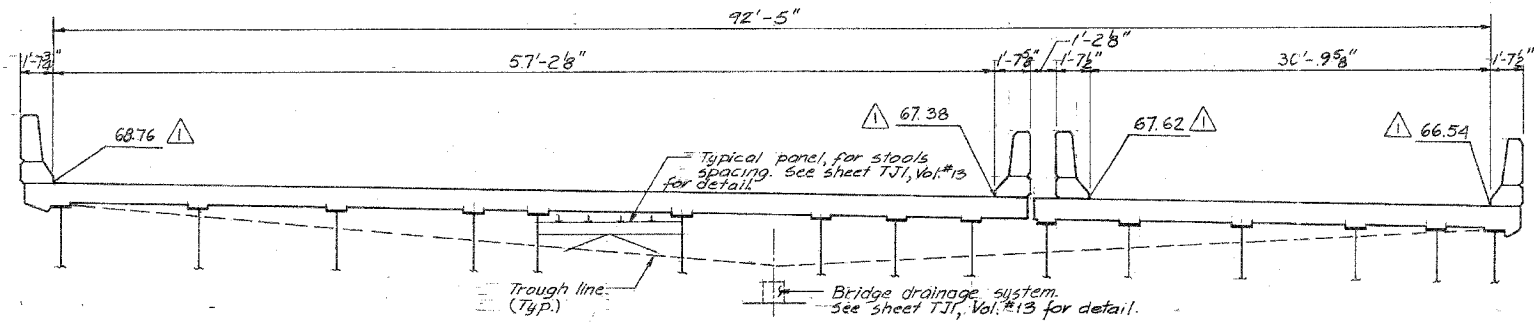
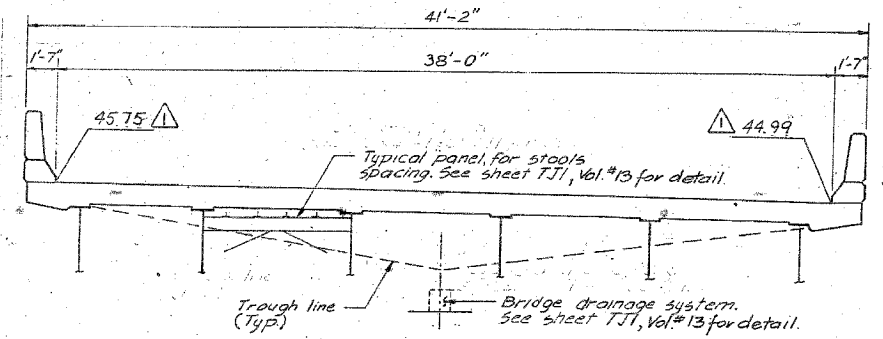


F.A.I.	SECTION	COUNTY	TOTAL SHEETS	SHEET NO.
94/90	2003-028F	COOK	419	345
STA.	TO STA.			
FED. ROAD DIST. NO.	ILLINOIS FED. AID PROJECT			

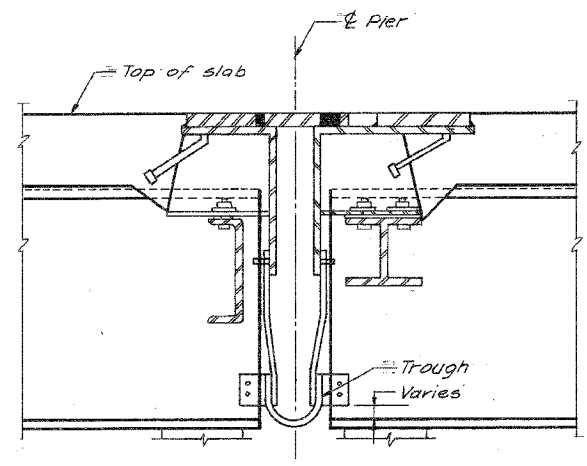
62580



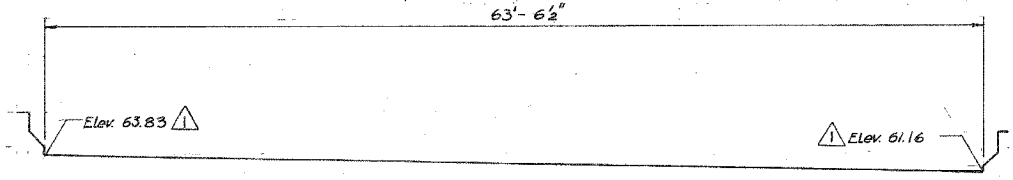
EXPANSION JOINT AT PIER No.1
4 1/2" FINGER PLATE WITH TROUGH



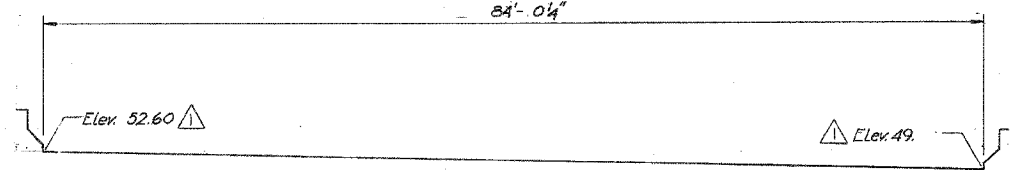
PIER No. C10
EXPANSION JOINT AT PIER No.1 & No. C10
4 1/2" FINGER PLATE WITH TROUGH



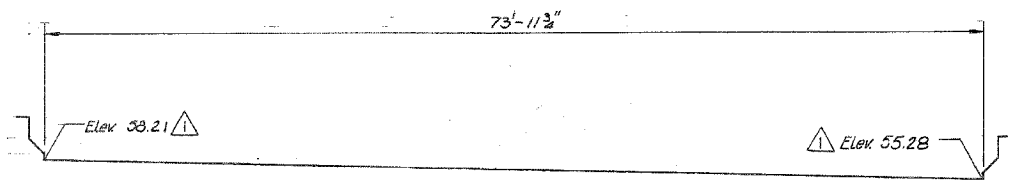
FINGER PLATE EXPANSION JOINT
(TYPICAL CROSS-SECTION)
See TJI, Vol. #13 for Detail



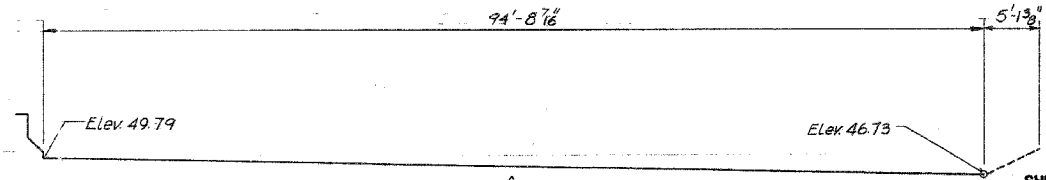
AT PIER No.3
2 1/2" NEOPRENE JOINT



AT PIER No.7
2 1/2" NEOPRENE JOINT



AT PIER No.5
2 1/2" NEOPRENE JOINT



AT PIER No.8
4" PREFORMED JOINT SEAL

Note:
All Joints are looking North.

SHEET E 37 OF 88

STATE OF ILLINOIS
DEPARTMENT OF TRANSPORTATION
F.A.I. ROUTE 90/94 (DAN RYAN EXPRESSWAY)
SECTION 1985-077 B-R-COOK COUNTY
N.B. MAINLINE RECONSTRUCTION
STRUCTURE 016-1113
TRANSVERSE DECK JOINT ELEVATION
Scale: NONE
Date: AUGUST, 1988
Drawn By: O.O.
Checked By: T.V.
ENVIRODYNE ENGINEERS INC.
Chicago, Illinois

REVISIONS	
Name	Date

REVISIONS	
NAME	DATE

ILLINOIS DEPARTMENT OF TRANSPORTATION
F.A.I. 94/90 (DAN RYAN EXPRESSWAY)
NB DAN RYAN ELEVATED BRIDGE
REPAIR FROM 15TH TO 28TH STREETS
EXISTING PLAN INFORMATION
SN 016-1113
SCALE: NTS
DATE: 7/22/2005
DRAWN BY: BDC
CHECKED BY: BLU

BOWMAN, BARRETT & ASSOCIATES INC.
CONSULTING ENGINEERS
Chicago, Illinois
312.228.0100
www.bbainc.com

FOR INFORMATION ONLY

12-1-88

7/19/2005 10:06:27 AM