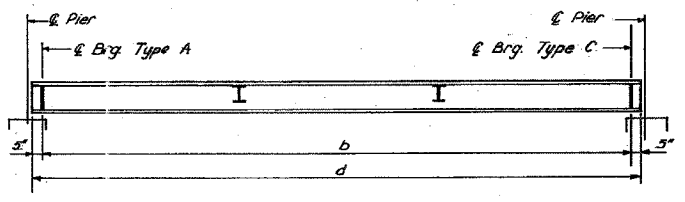


LEGEND
 [C1] Replace End Cross Frame (Type C1)
 See Sheet SR3, Vol. 13 for Detail

Note:
 ** Space brackets so as not to interfere with existing intermediate stiffeners.
 For bracket details see sheet BR1, Vol. 13
 For notes see sheet G27.

FRAMING PLAN
 SPANS 21, 22, E1, & E2

Dimension Table					
GIRDER	Type	a	Type	d	
Span E-1	GN 21	Fix	99'-6 7/8"	Fix	100'-6 7/8"
	GN 22	Fix	80'-2 1/4"	Fix	81'-0 1/4"
Span E-2	GN 23	Fix	134'-8 1/2"	Fix	135'-6 1/2"
	GN 24	Fix	132'-11 1/4"	Fix	133'-9 1/4"
	GN 25	Fix	129'-2 5/8"	Fix	130'-0 5/8"



GIRDER ELEVATION
 Girders GN 21 thru GN 25

STATE OF ILLINOIS
 DEPARTMENT OF TRANSPORTATION
 F.A.I. ROUTE 90/94 (DAN RYAN EXPRESSWAY)
 SECTION 1985 - 0776R - COOK COUNTY
 N. B. MAINLINE RECONSTRUCTION
 STRUCTURE 016-1115
 FRAMING PLAN SPANS 21 TO E-2
 Scale: NONE
 Date: AUG. 1988
 Drawn By: MMS
 Checked By: MEM
 ENVIRODYNE ENGINEERS INC.
 Chicago, Illinois

REVISIONS	DATE
NAME	DATE

ILLINOIS DEPARTMENT OF TRANSPORTATION
 F.A.I. 94/90 (DAN RYAN EXPRESSWAY)
 NB DAN RYAN ELEVATED BRIDGE
 REPAIR FROM 15TH TO 28TH STREETS
 EXISTING PLAN INFORMATION
 SN 016-1115
 SCALE: NTS
 DATE: 7/22/2005
 DRAWN BY: BDC
 CHECKED BY: BLU

FOR INFORMATION ONLY

7/19/2005 10:54 AM