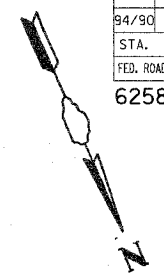
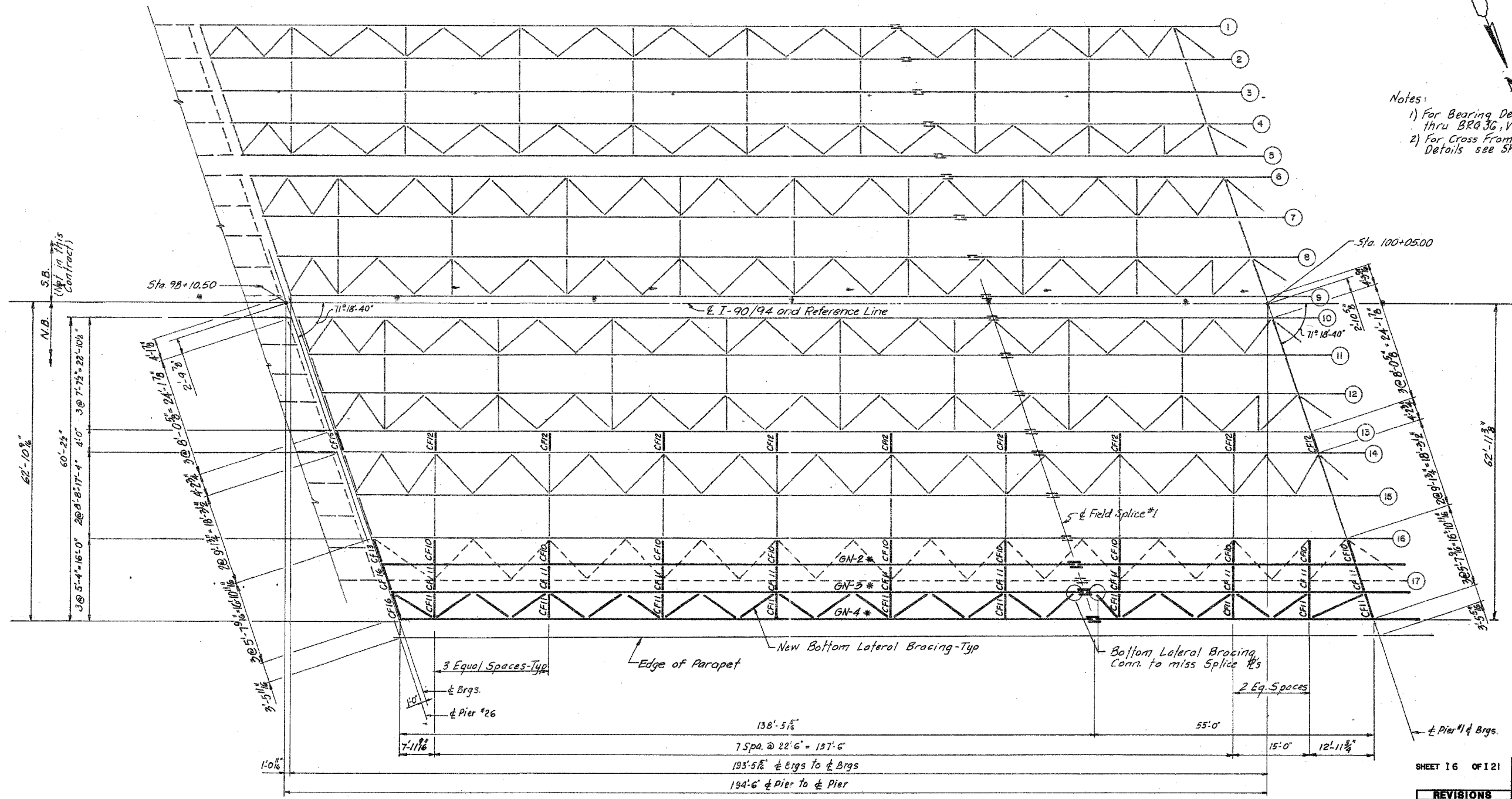


F.A.I.	SECTION	COUNTY	TOTAL SHEETS	SHEET NO.
94/90	2003-028F	COOK	419	355
STA.	TO STA.			
FED. ROAD DIST. NO.	ILLINOIS	FED. AID PROJECT		
62580				



- Notes:
- 1) For Bearing Details see Sheets BRG 32 thru BRG 36, Vol. #13
  - 2) For Cross Frame and Bottom Lateral Bracing Details see Sheet I 11.



ALL NEW MATERIALS SHOWN ON THIS SHEET ARE FURNISHED UNDER A SEPARATE STEEL FABRICATION CONTRACT (SECTION 1988-003F), UNLESS NOTED OTHERWISE.

**PLAN - SPAN - 1 (N. B.)**

**LEGEND**  
 - - - - - To be removed (N.B. only)  
 \* New Plate girder (for size & length See Sheet 19)

SHEET 16 OF 121

REVISIONS	
Name	Date

STATE OF ILLINOIS DEPARTMENT OF TRANSPORTATION	
FA I ROUTE 90/94 (DAN RYAN EXPRESSWAY) SECTION 885-0778-R COOK COUNTY N.B. MAINLINE RECONSTRUCTION STRUCTURE 016-1116 FRAMING PLAN SPAN 1	
Scale: NONE	Drawn By: Ayp
Date: AUG. 1998	Checked By: AWP
ENVIRODYNE ENGINEERS INC. Chicago, Illinois	

ILLINOIS DEPARTMENT OF TRANSPORTATION	
F.A.I. 94/90 (DAN RYAN EXPRESSWAY) NB DAN RYAN ELEVATED BRIDGE REPAIR FROM 15TH TO 28TH STREETS EXISTING PLAN INFORMATION SN 016-1116	
SCALE: NTS	DRAWN BY: BDC
DATE: 7/22/2005	CHECKED BY: BLU

BOWMAN, BARRETT & ASSOCIATES INC.  
 CONSULTING ENGINEERS  
 Chicago, Illinois  
 312.228.0100  
 www.bbainc.com

FOR INFORMATION ONLY

7/16/2005 10:58 AM