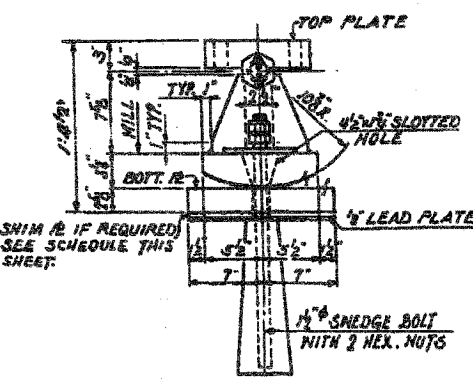
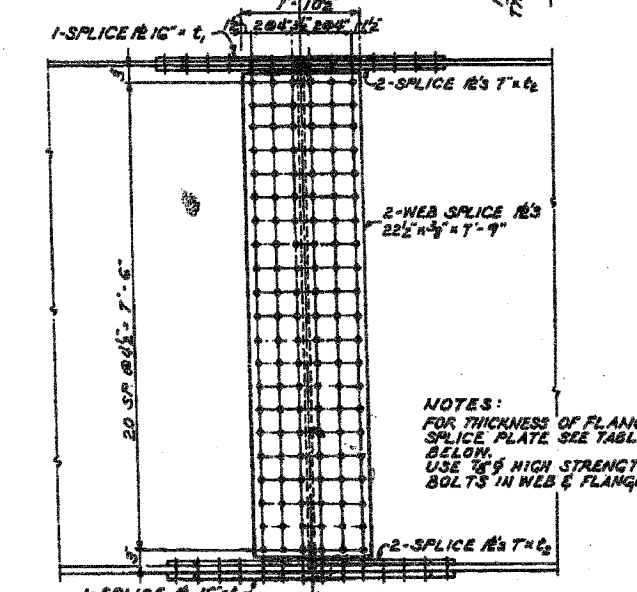
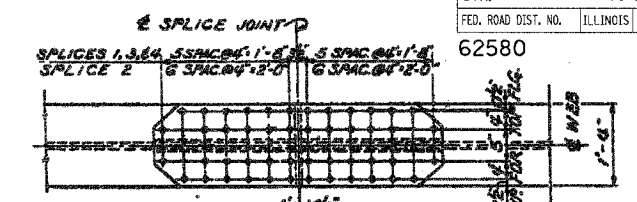
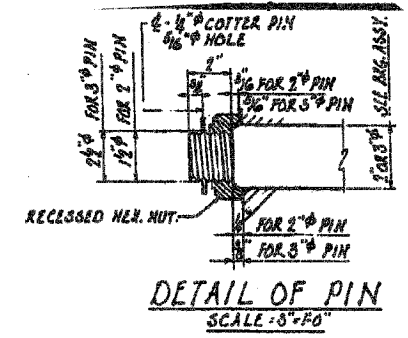
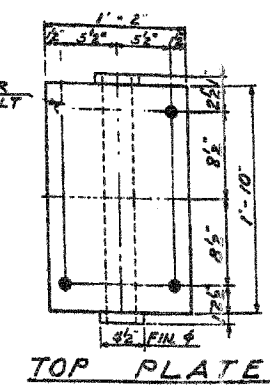
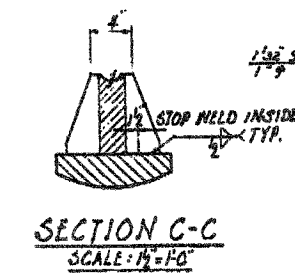
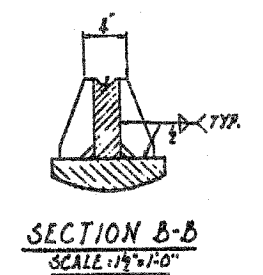
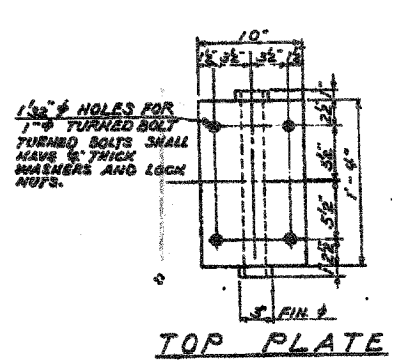
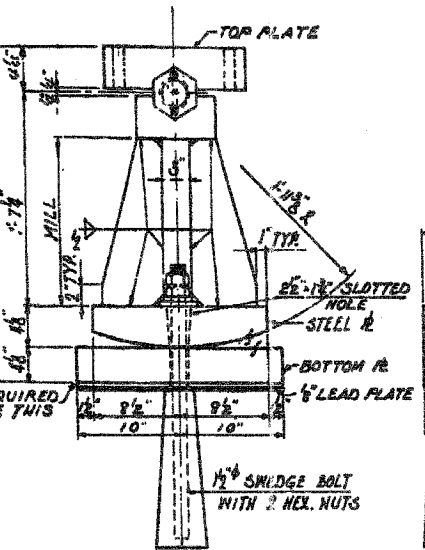
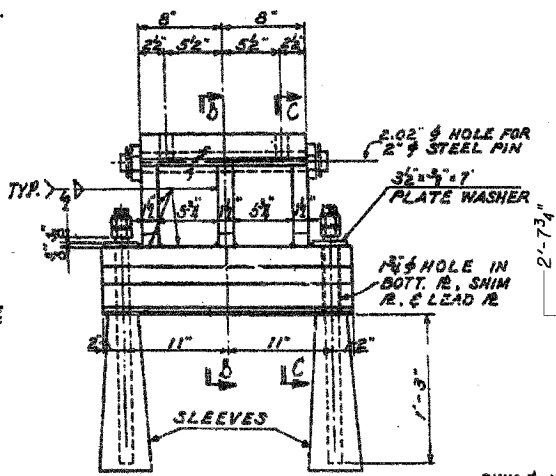


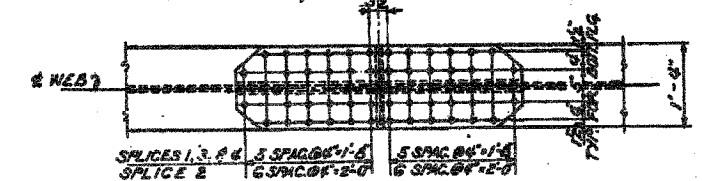
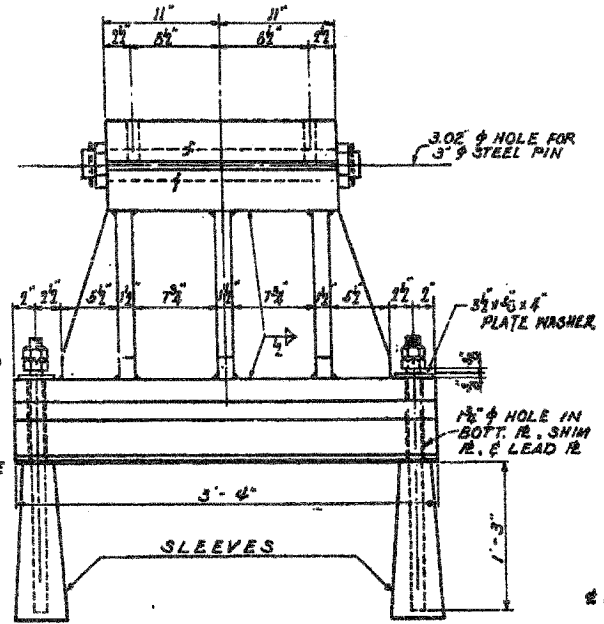
62580



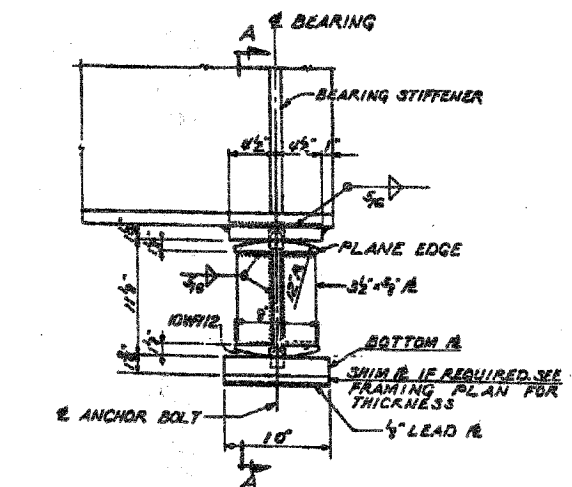
DETAILS OF EXPANSION BEARING AT PIER 26
SCALE: 1/2" = 1'-0"



DETAILS OF EXPANSION BEARING AT PIER 1
SCALE: 1/2" = 1'-0"

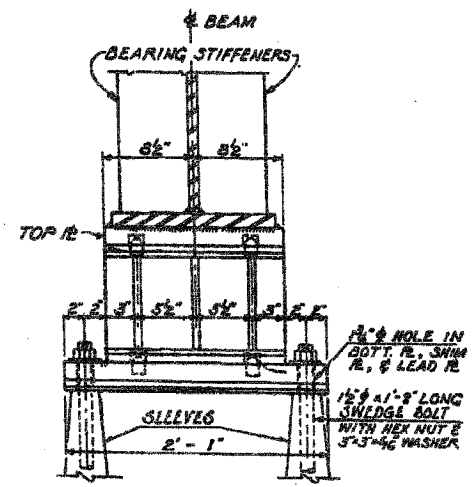


DETAIL OF FIELD SPLICE
SCALE: 3/4" = 1'-0"



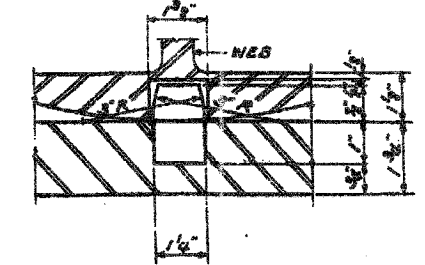
ELEVATION
SCALE: 1/2" = 1'-0"

DETAILS OF EXPANSION BEARING AT PIER 3



SECTION A-A
SCALE: 1/2" = 1'-0"

PINTLES SHALL BE PRESSED FIT OR THREADED INTO BOTTOM BEARING PLATE OR ROCKER



BOTTOM PINTLE DETAIL
(TOP PINTLE DETAIL SIMILAR)
SCALE: 1/2" = 1'

SHIM # SCHEDULE

BEARING PIER #	4	6	7	9	12	15
26	-	-	2/8"	3/8"	-	3/8"
1	-	2/8"	-	-	-	-
3	2/8"	-	-	-	2/8"	-

NOTE!
FOR DETAIL OF FIXED BEARING AT PIER 2 SEE SH. 5B.

TABLE OF FLANGE SPLICE PLATES

NO. OF GIRDER	LOCATION ON TOP & BOTTOM FLANGES	THICKNESS OF SPLICE PLATE	
		SPLICES 1, 3, & 4	SPLICE 2
1, 9, & 17	t ₁	3/8"	1/2"
	t ₂	7/16"	7/8"
2, 3, 4, & 5	t ₁	3/8"	7/16"
	t ₂	7/16"	1/2"
6, 11, 12, 13, & 14	t ₁	3/8"	7/16"
	t ₂	7/16"	1/2"
7, 8, 10, 15, & 16	t ₁	3/8"	7/16"
	t ₂	7/16"	1/2"

* FOR LOCATION OF SPLICES SEE FRAMING SHEETS 11, 12 & 13

REVISIONS	
NAME	DATE