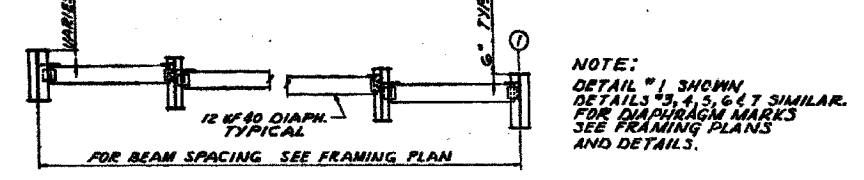
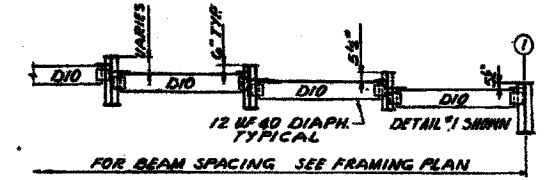


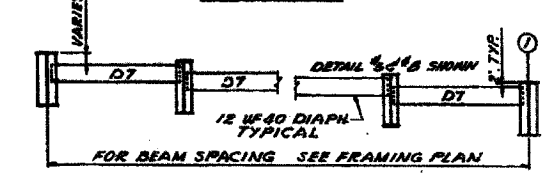
TYPICAL PARTIAL ELEVATION  
SPAN #14 SHOWN SPANS #8 THRU #11.  
SPANS #15 THRU #19 SIMILAR



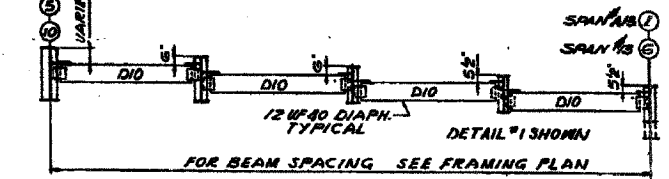
TYPICAL PARTIAL ELEVATION  
SPAN #14 SHOWN. SPANS #11 THRU #13, #17 THRU #19  
SPANS #15 THRU #17 & SPANS #7 THRU #14 SIMILAR.



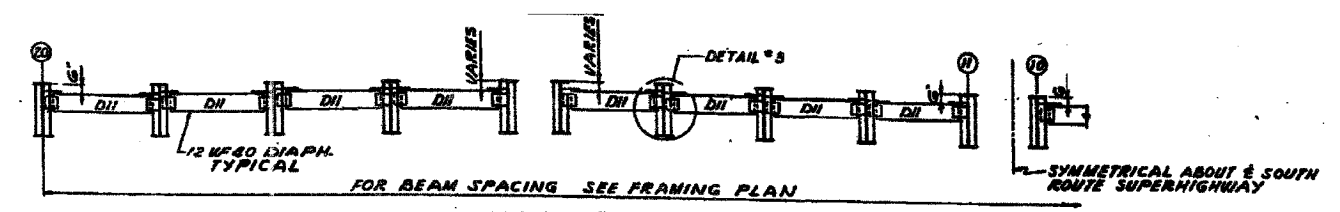
TYPICAL PARTIAL ELEVATION  
SPAN #12 AT PIER #13 SHOWN  
SPAN #16 AT PIER #16 SIMILAR  
SCALE: 1/4" = 1'-0"



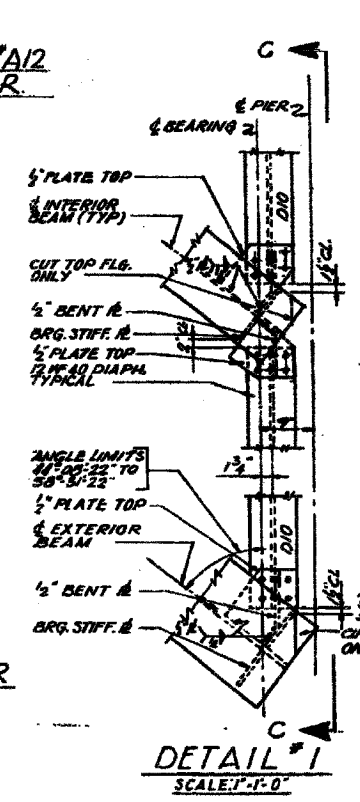
TYPICAL PARTIAL ELEVATION  
SPAN #6 AT PIER #6 SHOWN. SPAN #7 AT PIER #7  
SPAN #4 THRU #6 AT PIER #3 THRU #6  
SPAN #11 AT SOUTH ABUT. & SPAN #24 AT PIER #23 SIMILAR



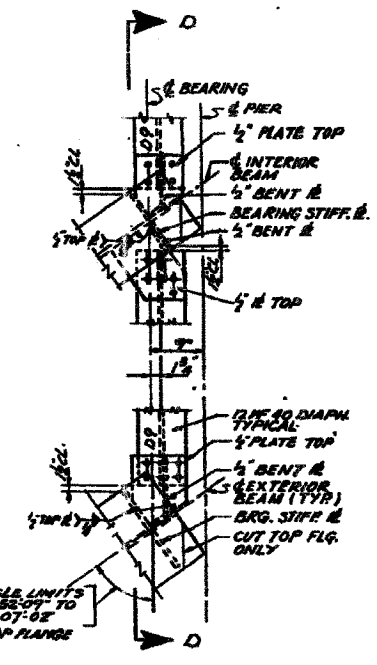
TYPICAL ELEVATION  
SPAN #13 AT PIER #13 SHOWN  
SPAN #13 AT PIER #13 SIMILAR



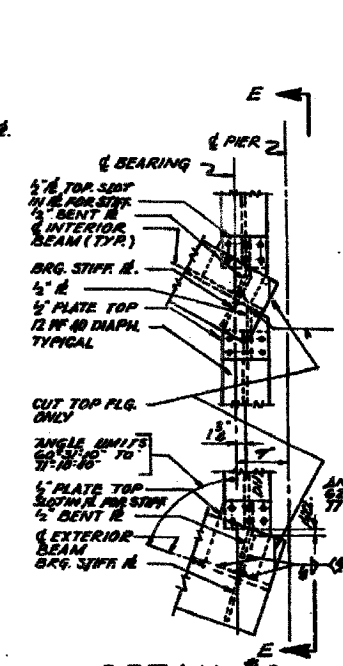
HALF ELEVATION  
SPAN #26 AT PIER #26



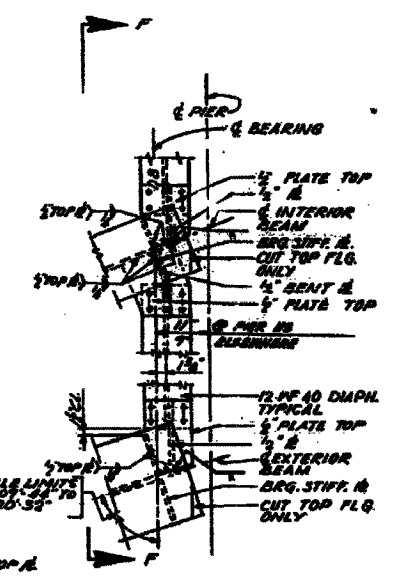
DETAIL #1  
SCALE: 1" = 1'-0"



DETAIL #2  
SCALE: 1" = 1'-0"

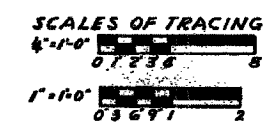


DETAIL #3  
SCALE: 1" = 1'-0"



DETAIL #4  
SCALE: 1" = 1'-0"

NOTES:  
WORK THIS SHEET WITH SHEET 58.  
WORK THIS SHEET WITH FRAMING PLAN SHEET # 1 TO 52.



ALFRED BENSCH & ASSOCIATES CONSULTING ENGINEERS  
10 SOUTH WABASH AVENUE CHICAGO, ILLINOIS

CITY OF CHICAGO  
DEPARTMENT OF PUBLIC WORKS  
BUREAU OF ENGINEERING  
SOUTH ROUTE SUPERHIGHWAY  
ELEVATED HIGHWAY  
28<sup>TH</sup> PLACE TO STEWART AVE.  
SECTION 9-2424.3-01  
END DIAPHRAGM DETAILS  
SHEET NO. 47 OF 114 SHEETS DATE: MARCH, 1991

REVISIONS	
NAME	DATE

ILLINOIS DEPARTMENT OF TRANSPORTATION  
F.A.I. 94/90 (DAN RYAN EXPRESSWAY)  
NB DAN RYAN ELEVATED BRIDGE  
REPAIR FROM 15TH TO 28TH STREETS  
EXISTING PLAN INFORMATION  
SN 016-1117 & 016-1118  
SCALE: NTS DRAWN BY: BDC  
DATE: 7/22/2005 CHECKED BY: BLU

FOR INFORMATION ONLY

BOWMAN, BARRETT & ASSOCIATES INC.  
CONSULTING ENGINEERS  
Chicago, Illinois  
312.228.0100  
www.bbainc.com

7/19/2005 10:40 AM