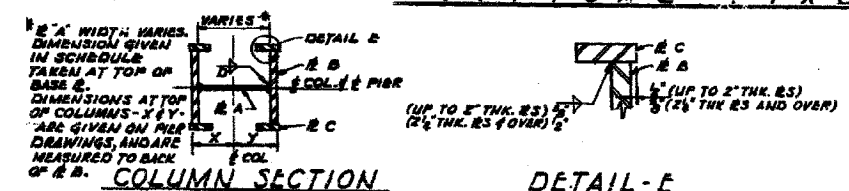


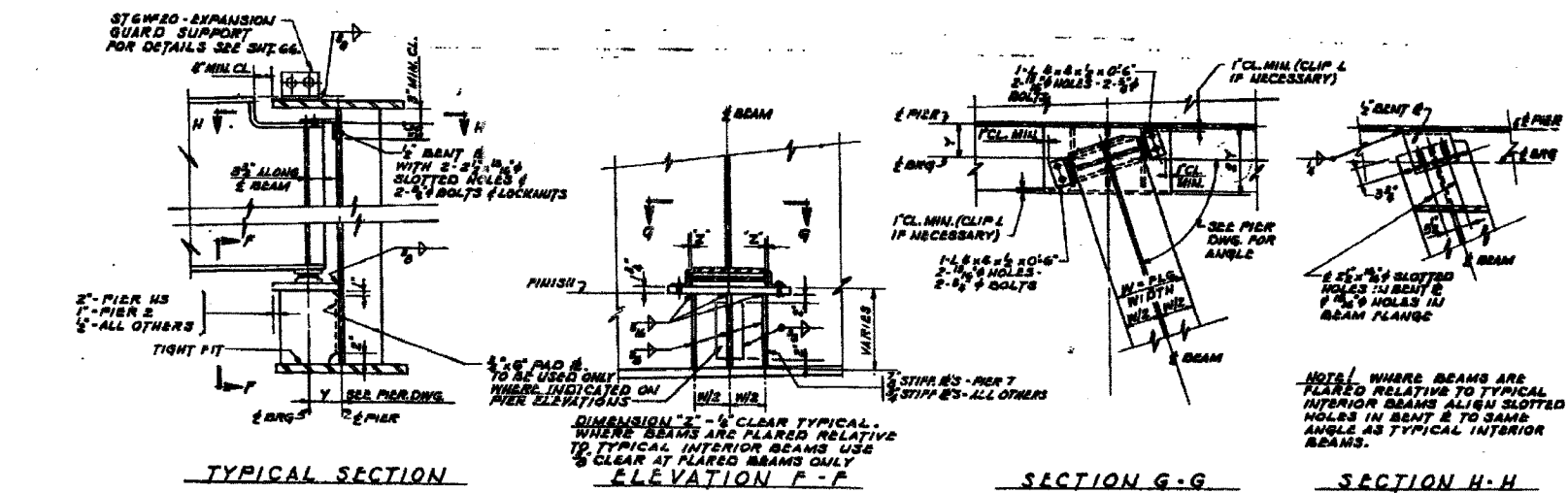
TYPICAL FIXED CONNECTIONS AT STEEL PIERS
SCALE: 3/4\"/>



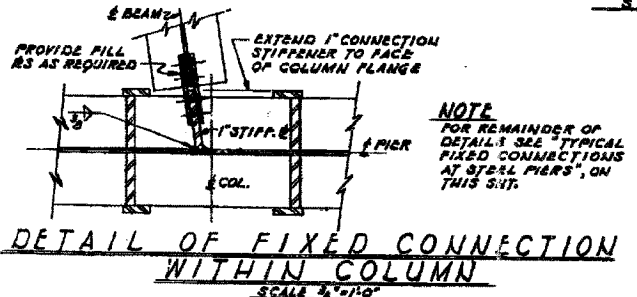
COLUMN SECTION
SCALE: 1/2\"/>

PIER MEMBER	COL. a			COL. b			COL. c		
	WELD D	MATERIAL	WELD D	MATERIAL	WELD D	MATERIAL	WELD D	MATERIAL	
A4	30x2	L.A.S.	30x2	L.A.S.	30x2	L.A.S.	30x2	L.A.S.	
A5	27x1	L.A.S.	27x1	L.A.S.	27x1	L.A.S.	27x1	L.A.S.	
H1	28x1	L.A.S.	28x1	L.A.S.	28x1	L.A.S.	28x1	L.A.S.	
H2	30x1 1/2	L.A.S.	30x1 1/2	L.A.S.	30x1 1/2	L.A.S.	30x1 1/2	L.A.S.	
H3	21x1	L.A.S.	21x1	L.A.S.	21x1	L.A.S.	21x1	L.A.S.	
H4	27x1	L.A.S.	27x1	L.A.S.	27x1	L.A.S.	27x1	L.A.S.	
1	28x1	L.A.S.	28x1	L.A.S.	28x1	L.A.S.	28x1	L.A.S.	
2	26x1	L.A.S.	26x1	L.A.S.	26x1	L.A.S.	26x1	L.A.S.	
3	30x1 1/2	L.A.S.	30x1 1/2	L.A.S.	30x1 1/2	L.A.S.	30x1 1/2	L.A.S.	
4	30x2 1/4	L.A.S.	30x2 1/4	L.A.S.	30x2 1/4	L.A.S.	30x2 1/4	L.A.S.	
5	27x1 1/2	L.A.S.	27x1 1/2	L.A.S.	27x1 1/2	L.A.S.	27x1 1/2	L.A.S.	
6	27x1 1/2	L.A.S.	27x1 1/2	L.A.S.	27x1 1/2	L.A.S.	27x1 1/2	L.A.S.	
7	27x1	L.A.S.	27x1	L.A.S.	27x1	L.A.S.	27x1	L.A.S.	
19	36x1 1/2	L.A.S.	36x1 1/2	L.A.S.	36x1 1/2	L.A.S.	36x1 1/2	L.A.S.	
20	30x1 1/2	L.A.S.	30x1 1/2	L.A.S.	30x1 1/2	L.A.S.	30x1 1/2	L.A.S.	
21	36x1 1/2	L.A.S.	36x1 1/2	L.A.S.	36x1 1/2	L.A.S.	36x1 1/2	L.A.S.	
22	30x1 1/2	L.A.S.	30x1 1/2	L.A.S.	30x1 1/2	L.A.S.	30x1 1/2	L.A.S.	
23	36x1 1/2	L.A.S.	36x1 1/2	L.A.S.	36x1 1/2	L.A.S.	36x1 1/2	L.A.S.	

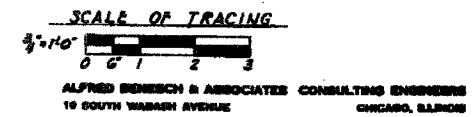
NOTE: C.S. INDICATES CARBON STEEL ; L.A.S. INDICATES LOW ALLOY STEEL.



TYPICAL SECTION
EXPANSION BEARING SUPPORT AT STEEL PIERS
SCALE: 3/4\"/>



DETAIL OF FIXED CONNECTION WITHIN COLUMN
SCALE: 3/4\"/>



CITY OF CHICAGO
DEPARTMENT OF PUBLIC WORKS
BUREAU OF ENGINEERING
SOUTH ROUTE SUPERHIGHWAY
ELEVATED HIGHWAY
28TH PLACE TO STEWART AVE.
SECTION 5-2424.3-01
STEEL PIER DETAILS
AND COLUMN SCHEDULE
SHEET NO. 145 OF 184 SHEETS DATE: MARCH, 1981

REVISIONS	
NAME	DATE

ILLINOIS DEPARTMENT OF TRANSPORTATION
F.A.I. 94/90 (DAN RYAN EXPRESSWAY)
NB DAN RYAN ELEVATED BRIDGE
REPAIR FROM 15TH TO 28TH STREETS
EXISTING PLAN INFORMATION
SN 016-1117 & 016-1118
SCALE: NTS
DATE: 7/22/2005
DRAWN BY: BDC
CHECKED BY: BLU

FOR INFORMATION ONLY

BOWMAN, BARRETT & ASSOCIATES INC.
CONSULTING ENGINEERS
Chicago, Illinois
312.228.0100
www.bbainc.com

7/19/2005