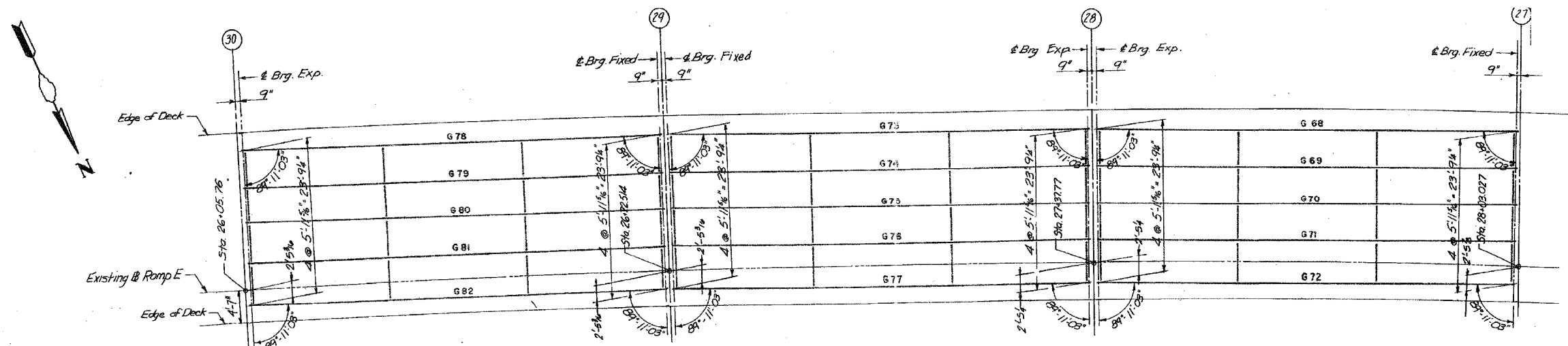
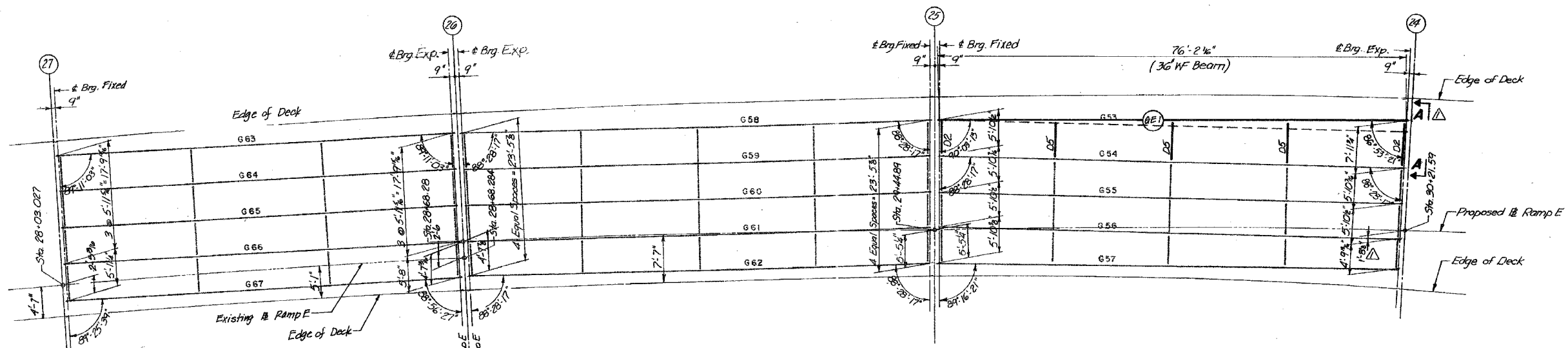


F.A.I.	SECTION	COUNTY	TOTAL SHEETS	SHEET NO.
94/90	2003-028F	COOK	419	372
STA.		TO STA.		
FED. ROAD DIST. NO.		ILLINOIS	FED. AID PROJECT	

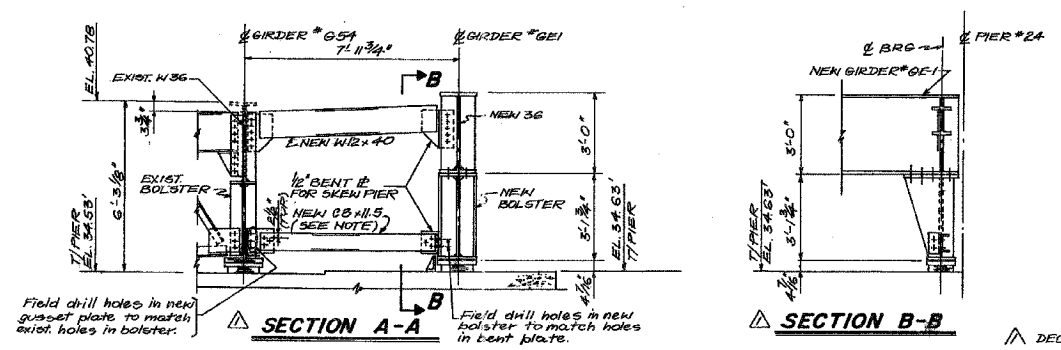
62580



**FRAMING PLAN - SPANS E1, E2 & E3**



**FRAMING PLAN - SPANS E4, E5 & E6**



**Note:**  
Furnish & Erect New C8x11.5 and end connection plate (to be provided for under Northbound Mainline Contract).

**STATE OF ILLINOIS**  
**DEPARTMENT OF TRANSPORTATION**  
 F.A.I. ROUTE 90/94 (DAN RYAN EXPRESSWAY)  
 SECTION 1985 - 077 R - COOK COUNTY  
 N. B. MAINLINE RECONSTRUCTION  
 STRUCTURE 016-1047 (RAMP E)  
 FRAMING PLAN SPANS 1 TO 6

Scale: NONE  
 Date: AUG. 1988

Drawn By: MMS  
 Checked By: MEM

**ENVIRODYNE ENGINEERS INC.**  
 Chicago, Illinois

REVISIONS	NAME	DATE

ILLINOIS DEPARTMENT OF TRANSPORTATION  
 F.A.I. 94/90 (DAN RYAN EXPRESSWAY)  
 NB DAN RYAN ELEVATED BRIDGE  
 REPAIR FROM 15TH TO 28TH STREETS  
 EXISTING PLAN INFORMATION  
 SN 016-1117 & 016-1118

SCALE: NTS  
 DATE: 7/22/2005

DRAWN BY: BDC  
 CHECKED BY: BLU

BOWMAN, BARRETT & ASSOCIATES INC.  
 CONSULTING ENGINEERS  
 Chicago, Illinois  
 312.228.0100  
 www.bbainc.com

FOR INFORMATION ONLY

11/19/2005 11:01:58 AM