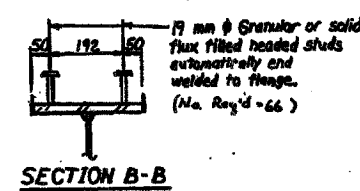
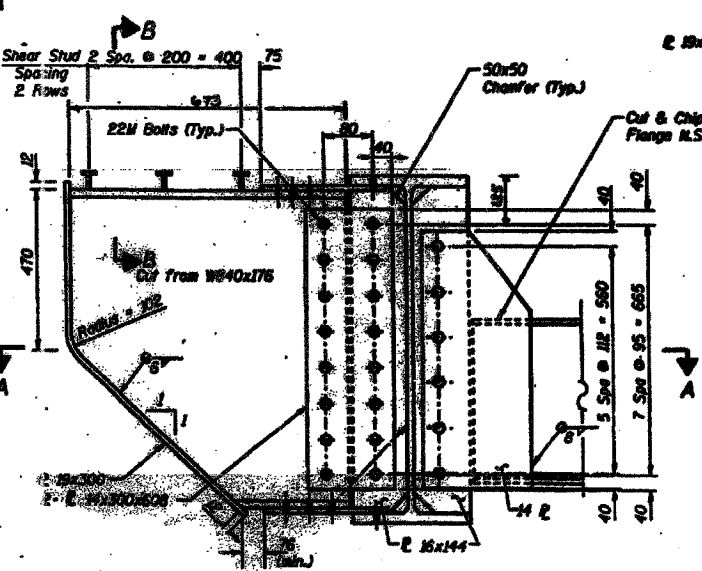


PLAN



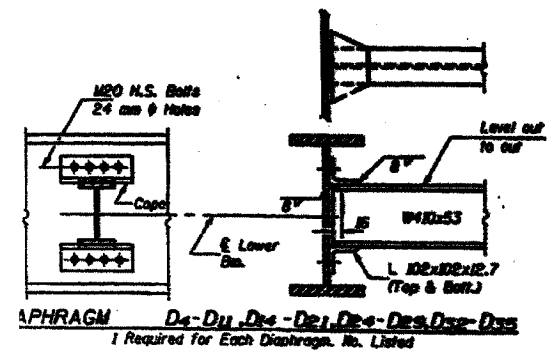
SECTION B-B



DIAPHRAGM D₁ & BRACKET B₁
B₁ - 11 Required
D₁ - 84 Required

NOTES:

- All dimensions are in millimeters (mm) except as noted.
- For Splice Details see sheet S27.
- For Bearing Details see sheets S30 & S31.
- BDx = Denotes New Beams
- D1 and D2 are New Diaphragms.
- TC denotes Tangent To Curve.
- For Girder Elevation, see sheet S27.
- For Top of beam elevations, see sheet S28.
- For diaphragm connections to existing beam, see S28.



DIAPHRAGM D₂-D₂₅
D₂ - 8 Required
D₃, D₁₀, D₁₂, D₁₄, D₁₅, D₁₇, D₁₈, D₂₁ - 2 Required Each
D₂₀ - 1 Required

Note: Two hardened washers shall be required over all oversize holes for diaphragms.
All dimensions are in millimeters (mm) except as noted.

REVISIONS	
NAME	DATE

ILLINOIS DEPARTMENT OF TRANSPORTATION
F.A.I. 94/90 (DAN RYAN EXPRESSWAY)
NB DAN RYAN ELEVATED BRIDGE
REPAIR FROM 15TH TO 28TH STREETS
EXISTING PLAN INFORMATION
SN 016-1059 (RAMP D)

SCALE: NTS
DATE: 7/22/2005

DRAWN BY: BDC
CHECKED BY: BLU

BOWMAN, BARRETT & ASSOCIATES INC.
CONSULTING ENGINEERS
Chicago, Illinois
312.228.0100
www.bbainc.com

FOR INFORMATION ONLY

7/19/2005 10:00 AM