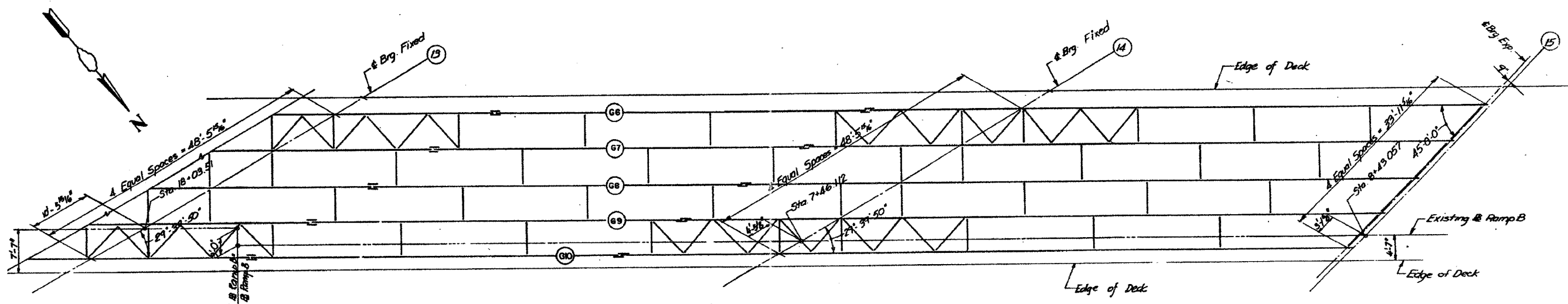
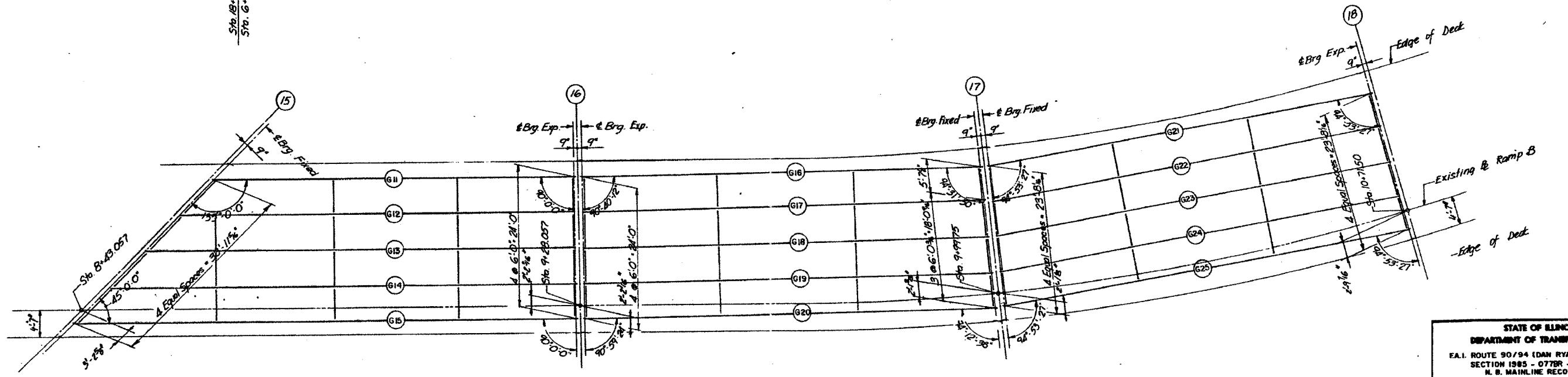


F.A.I.	SECTION	COUNTY	TOTAL SHEETS	SHEET NO.
94/90	2003-028F	COOK	419	379
STA.		TO STA.		
FED. ROAD DIST. NO.	ILLINOIS FED. AID PROJECT			
62580				



**FRAMING PLAN - SPANS B4 & B5**



**FRAMING PLAN - SPANS B6, B7 & B8**

STATE OF ILLINOIS  
DEPARTMENT OF TRANSPORTATION  
F.A.I. ROUTE 90/94 (DAN RYAN EXPRESSWAY)  
SECTION 1985 - OTTER - COOK COUNTY  
N. B. MAINLINE RECONSTRUCTION  
STRUCTURE 016-1140 (RAMP B)  
FRAMING PLAN SPANS 4 TO 8  
Scale: NONE  
Date: AUG. 1998  
Drawn By: 6045  
Checked By: MCM  
ENGINEERS INC.  
Chicago, Illinois

REVISIONS	NAME	DATE

ILLINOIS DEPARTMENT OF TRANSPORTATION  
F.A.I. 94/90 (DAN RYAN EXPRESSWAY)  
NB DAN RYAN ELEVATED BRIDGE  
REPAIR FROM 15TH TO 28TH STREETS  
EXISTING PLAN INFORMATION  
SN 016-1140  
SCALE: NTS  
DATE: 7/22/2005  
DRAWN BY: BDC  
CHECKED BY: BLU

FOR INFORMATION ONLY

BOWMAN, BARRETT & ASSOCIATES INC.  
CONSULTING ENGINEERS  
Chicago, Illinois  
312.228.0100  
www.bbainc.com

r:\660\road\bridge\13\chassis\620\_13\_1.FPIE5.dwg  
7/19/2005 10:48:57 AM