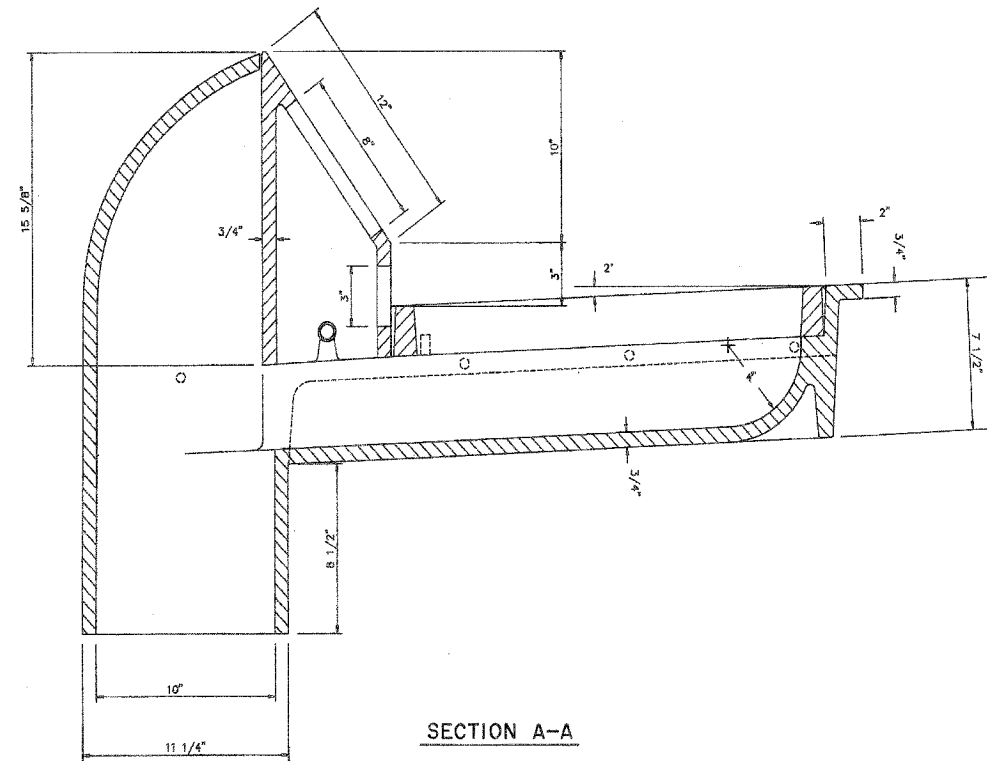


PLAN

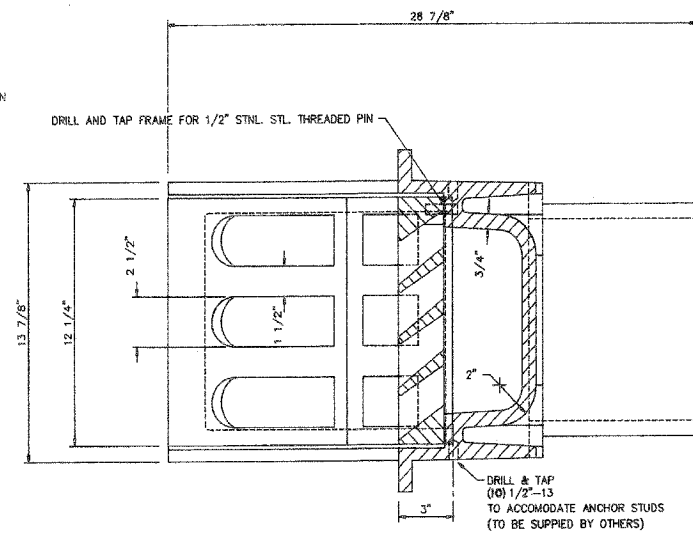


SECTION A-A

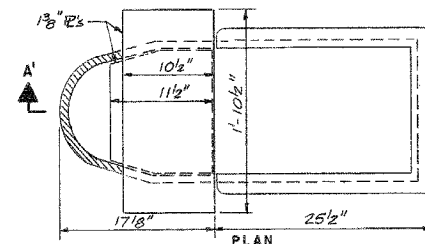
BRIDGE SCUPPER - TYPE "A"

NF-0332 445  
ESTIMATED WEIGHT 512#

SCHEDULE OF QUANTITIES	
STRUCTURE	No. REQUIRED
016-0137	10
016-1110	8
016-1111	11
016-1112	26
016-1113	3
016-1114	0
016-1070	0
016-1115	8
016-1140	2
016-1047	2
016-1116	8
016-1117	27
016-1118	2
TOTAL	107



SECTION B-B



SECTION A'-A'

BRIDGE SCUPPER - SPECIAL

ALL MATERIALS SHOWN ON THIS SHEET ARE FURNISHED UNDER A SEPARATE SUPPLY CONTRACT (SECTION 1988-004 I), UNLESS NOTED OTHERWISE.

MATERIAL: CAST GRAY IRON ASTM A-48, CLASS 35B  
FINISH: NONE

SHEET BS 4 OF BS 6

SHEET BS 4 OF BS 6

REVISIONS	
Name	Date

STATE OF ILLINOIS  
DEPARTMENT OF TRANSPORTATION  
F.A.I. ROUTE 90/94 (DAN RYAN EXPRESSWAY)  
SECTION 1985-077 B-R - COOK COUNTY  
N.B. MAINLINE RECONSTRUCTION  
SCUPPERS - ALL STRUCTURES  
BRIDGE SCUPPER TYPE A  
Scale: NONE  
Date: AUGUST 1988  
Drawn By: R.E.B.  
Checked By: W.R.K.  
ENVIRODYNE ENGINEERS INC.  
Chicago, Illinois

REVISIONS	
NAME	DATE

ILLINOIS DEPARTMENT OF TRANSPORTATION  
F.A.I. 94/90 (DAN RYAN EXPRESSWAY)  
NB DAN RYAN ELEVATED BRIDGE  
REPAIR FROM 15TH TO 28TH STREETS  
EXISTING PLAN INFORMATION  
SCUPPER DETAILS - TYPE A  
SCALE: NTS  
DATE: 7/22/2005  
DRAWN BY: BDC  
CHECKED BY: BLU

FOR INFORMATION ONLY