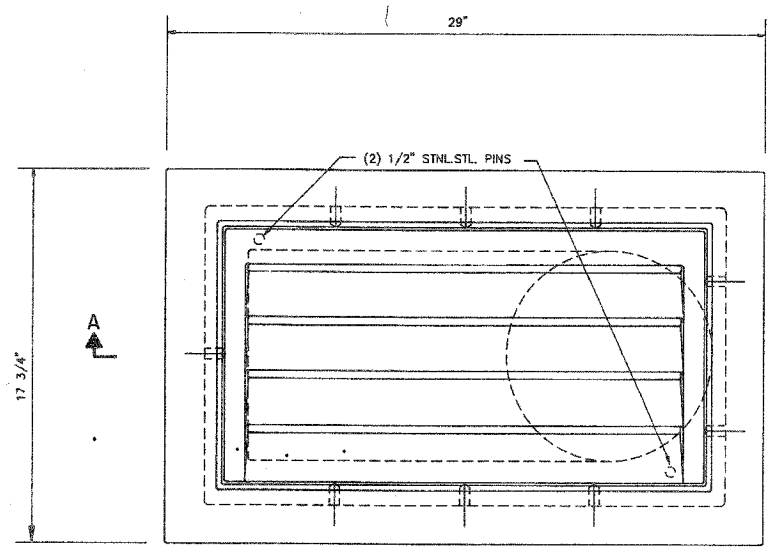
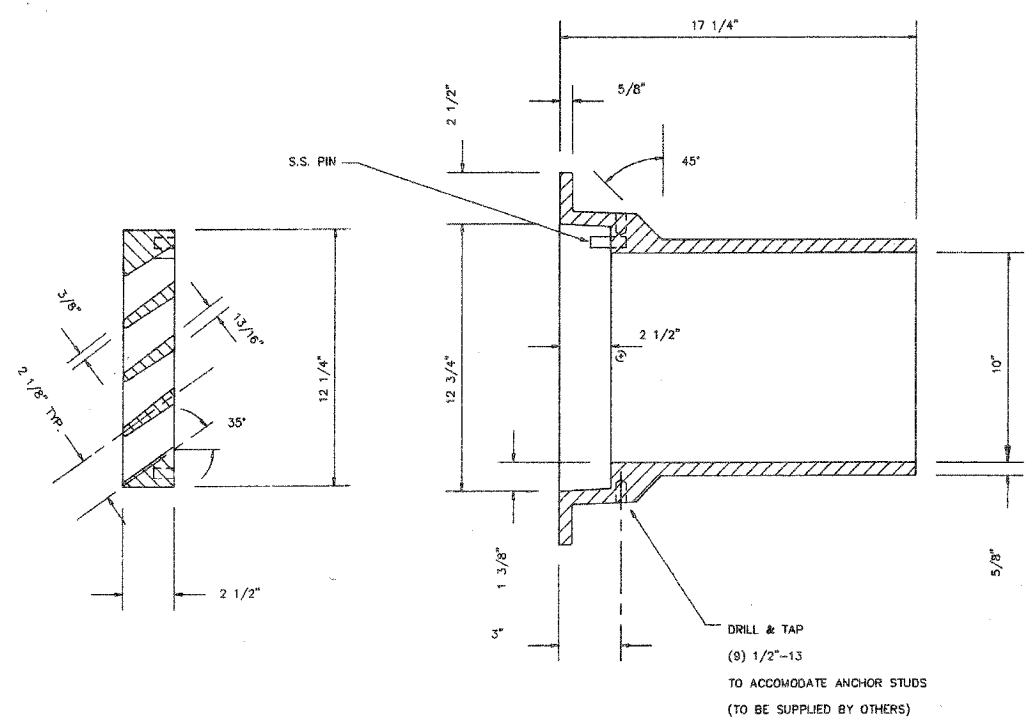


F.A.I.	SECTION	COUNTY	TOTAL SHEETS	SHEET NO.
94/90	2003-028F	COOK	419	382
STA.		TO STA.		
FED. ROAD DIST. NO.	ILLINOIS	FED. AID PROJECT		

62580



PLAN



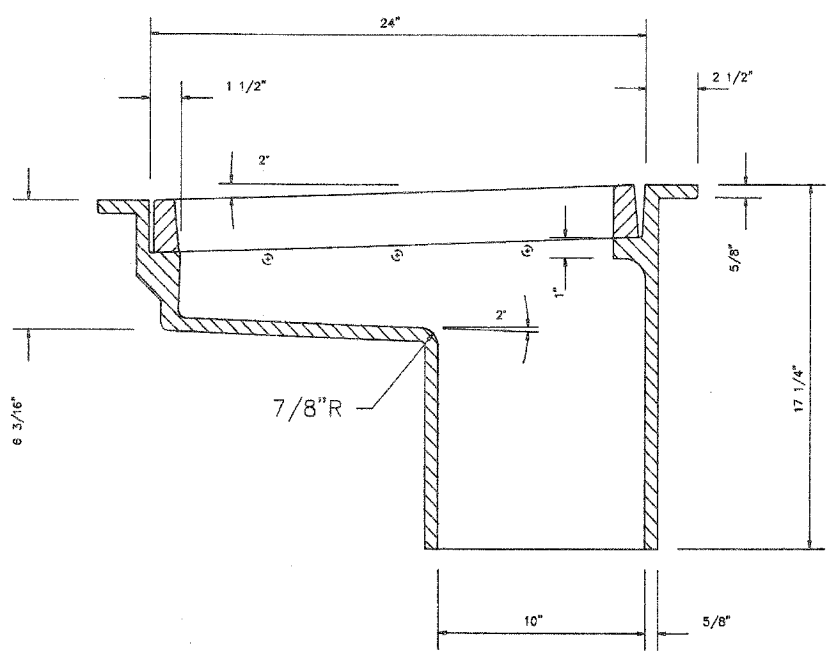
DRILL & TAP  
(8) 1/2"-13  
TO ACCOMMODATE ANCHOR STUDS  
(TO BE SUPPLIED BY OTHERS)

BRIDGE SCUPPER - TYPE "B"  
NF-0332 435  
ESTIMATED WEIGHT 235 #

SCHEDULE OF QUANTITIES	
STRUCTURE	No. REQUIRED
016-C137	0
016-I-10	0
016-I-11	0
016-I-12	1
016-I-13	2
016-I-14	10
016-1070	0
016-I-15	3
016-I-140	0
016-I-147	0
016-I-116	0
016-I-117	7
016-I-118	3
TOTAL	26

ALL MATERIALS SHOWN ON THIS SHEET ARE FURNISHED UNDER A SEPARATE SUPPLY CONTRACT (SECTION 1988-004 I), UNLESS NOTED OTHERWISE.

MATERIAL: CAST GRAY IRON ASTM A-48, CLASS 35B  
FINISH: NONE



SECTION A-A

SHEET B55 OF B56

REVISIONS	
Name	Date

STATE OF ILLINOIS  
DEPARTMENT OF TRANSPORTATION  
F.A.I. ROUTE 90/94 (DAN RYAN EXPRESSWAY)  
SECTION 1985-0779-R - COOK COUNTY  
N.B. MAINLINE RECONSTRUCTION  
SCUPPERS - ALL STRUCTURES  
BRIDGE SCUPPER TYPE B  
Scale: NONE Drawn By: R.E.P.  
Date: AUGUST, 1988 Checked By: W.P.K.  
ENVIRODINE ENGINEERS INC.  
Chicago, Illinois

REVISIONS		ILLINOIS DEPARTMENT OF TRANSPORTATION F.A.I. 94/90 (DAN RYAN EXPRESSWAY) NB DAN RYAN ELEVATED BRIDGE REPAIR FROM 15TH TO 28TH STREETS EXISTING PLAN INFORMATION SCUPPER DETAILS - TYPE B SCALE: NTS DRAWN BY: BDC DATE: 7/22/2005 CHECKED BY: BLU
NAME	DATE	

FOR INFORMATION ONLY

BOWMAN, BARRETT & ASSOCIATES INC.  
CONSULTING ENGINEERS  
Chicago, Illinois  
312.228.0100  
www.bbainc.com