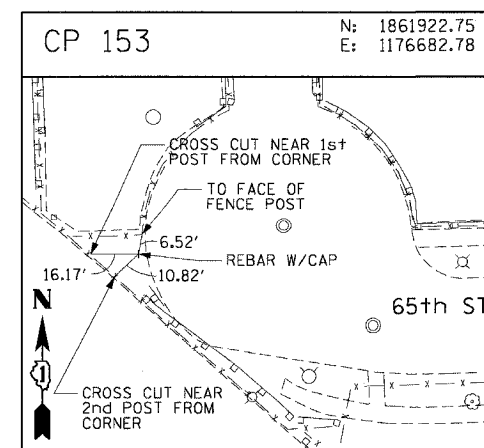
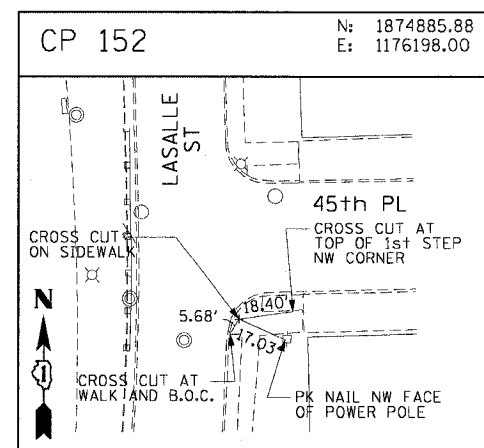
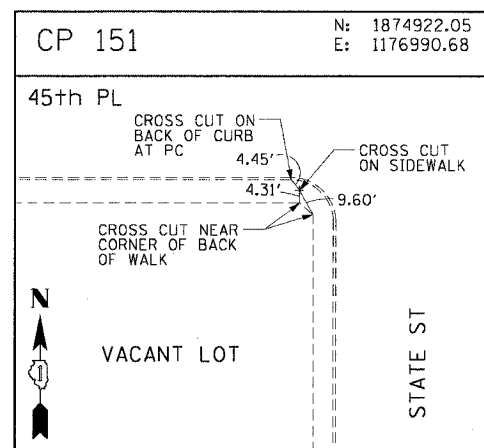
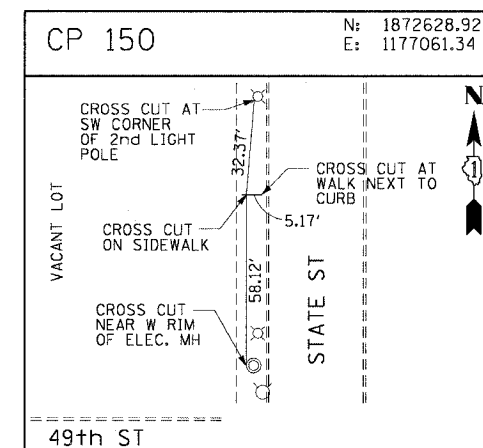
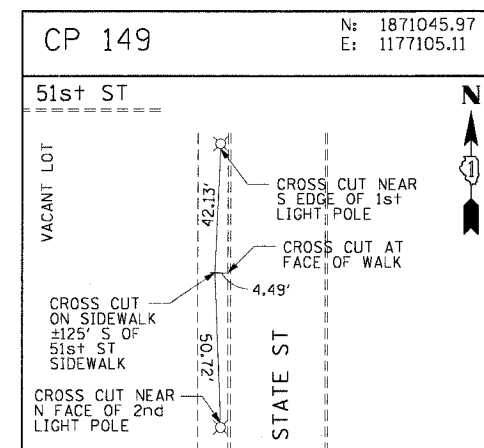
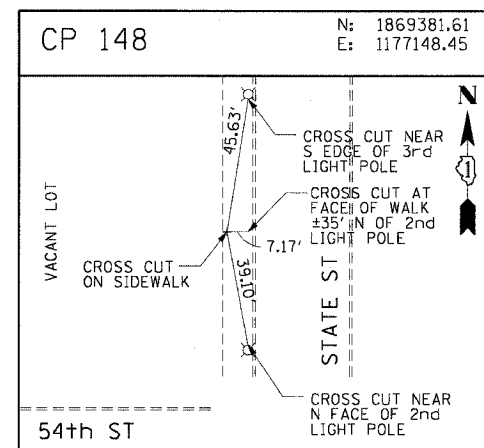
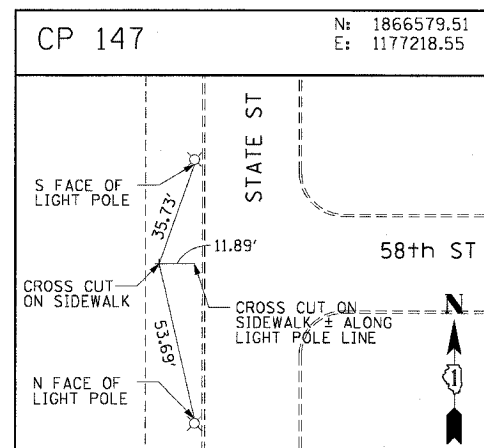
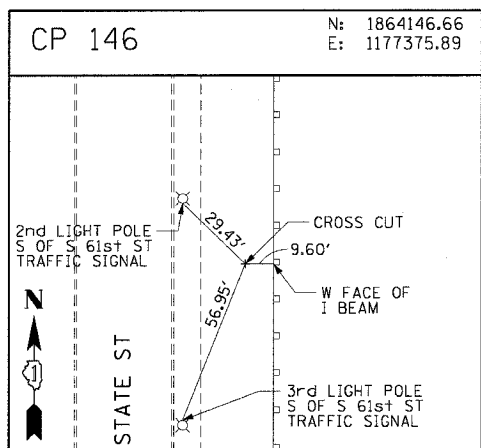
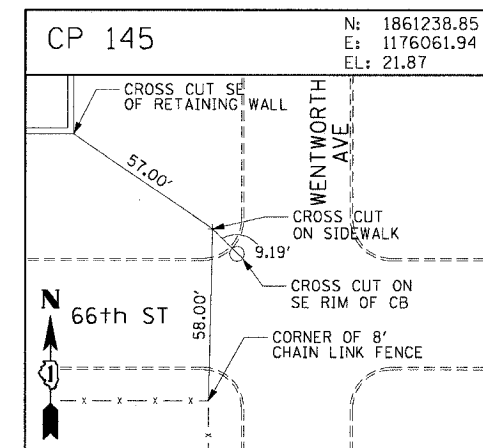
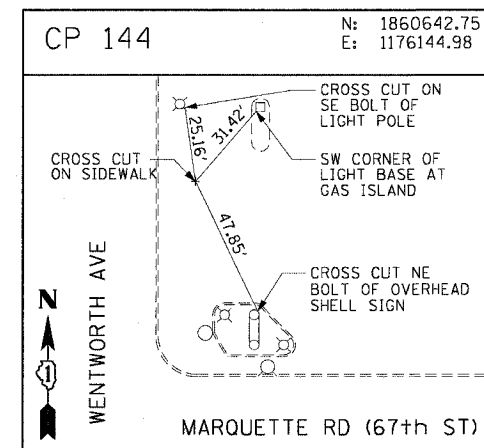
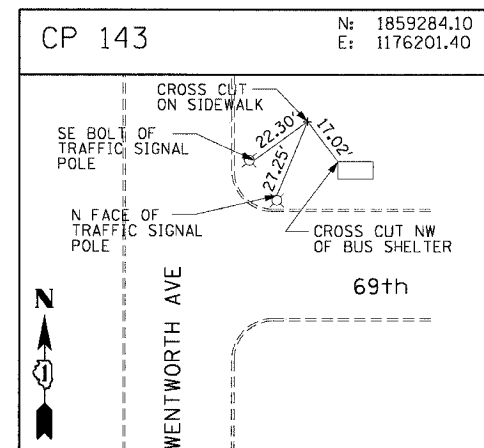
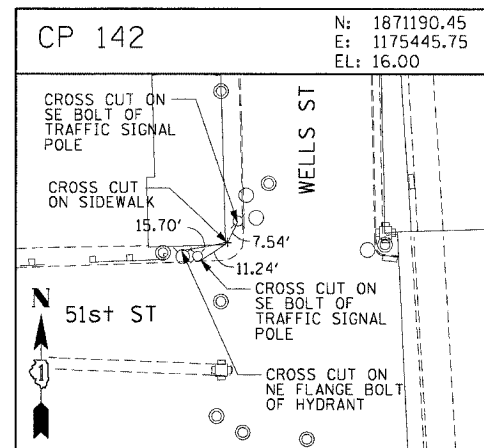
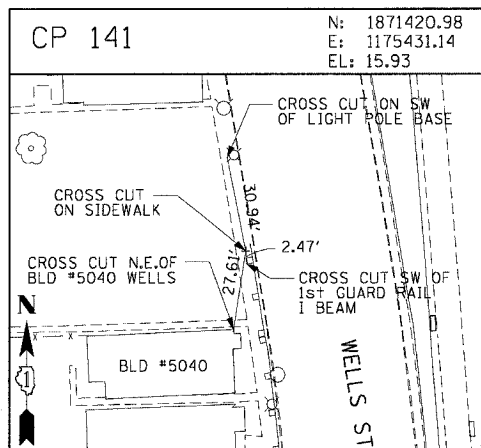
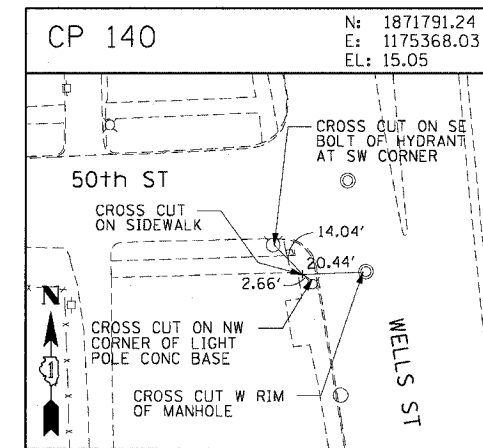
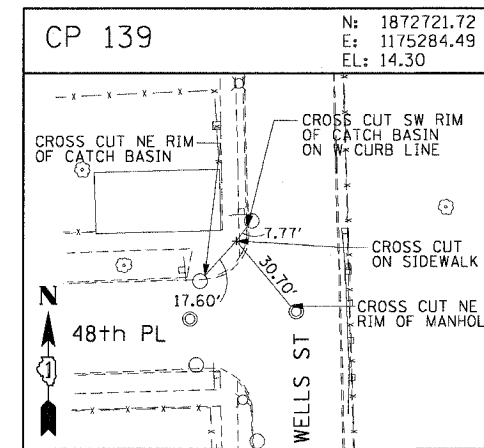
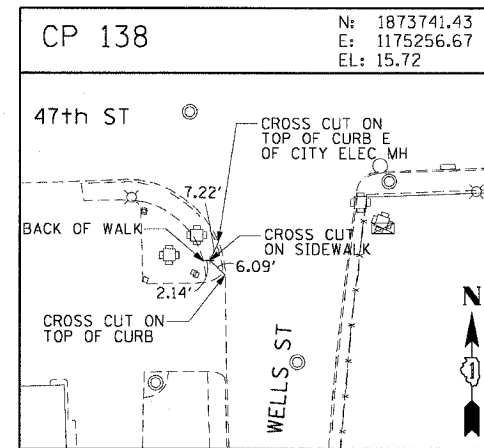
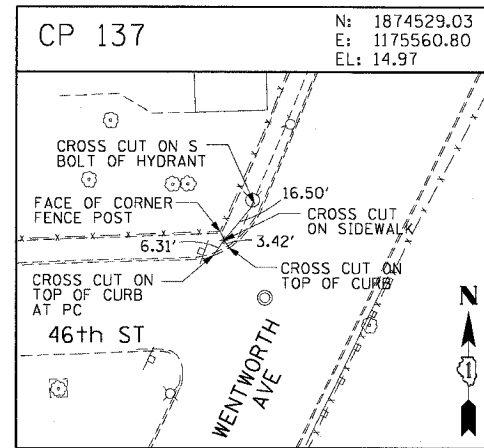
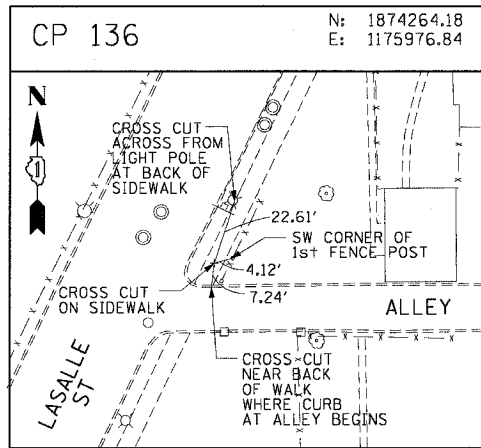


F.A.I. RTE.	SECTION	COUNTY	TOTAL SHEETS	SHEET NO.
90/94	2004-067L	COOK	35	18
STA.	TO STA.			
FED. ROAD DIST. NO. 1	ILLINOIS FED. AID PROJECT			
62806				



CTE ENGINEERS
CONSOR TOWNSEND ENVIRONMENTAL ENGINEERS, INC.
303 EAST WACKER DRIVE, SUITE 600
CHICAGO, ILLINOIS 60601-5202, PHONE: (312) 938-0300

REVISIONS	
NAME	DATE

ILLINOIS DEPARTMENT OF TRANSPORTATION
F.A.I. 90/94 (DAN RYAN EXPRESSWAY)
59th ST TO 47th ST (FRONTAGE ROAD)
CITY OF CHICAGO LIGHTING CONDUIT & FOUNDATIONS
WELLS STREET

SURVEY TIES AND CONTROL POINTS

SCALE: 1"=30'
DATE: February 11, 2005

DRAWN BY: MRK
CHECKED BY: JAL

\\cch-nf-p0465-p0465-vec-n-cnr-9-stk-contract-902-val090120303.stb 09/01/05 09:01:40 AM