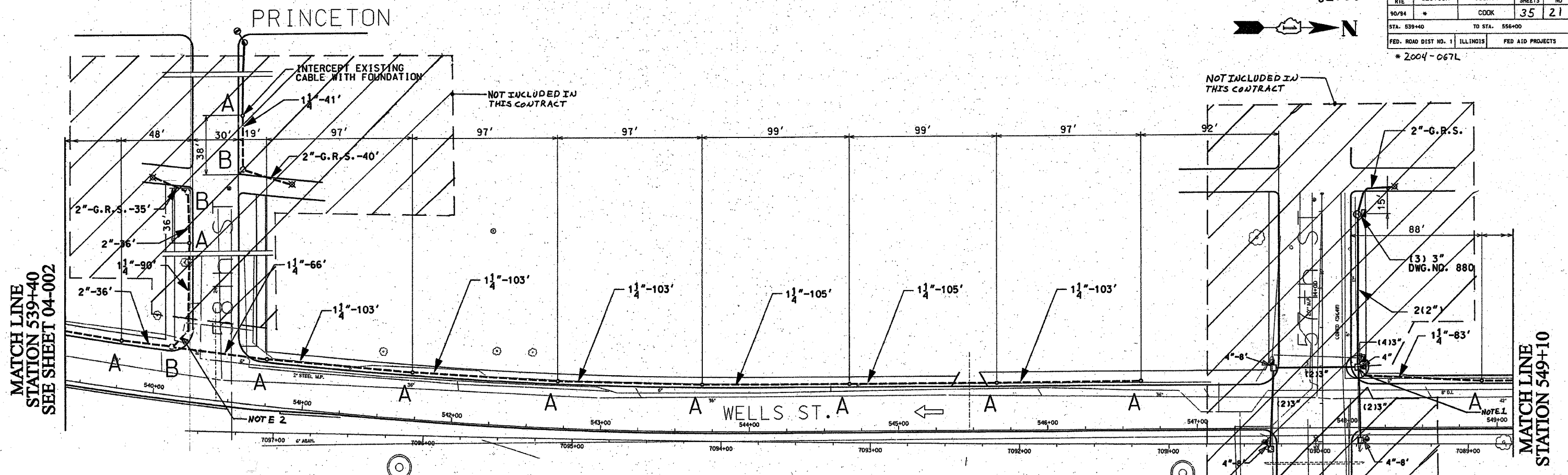
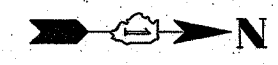


62806

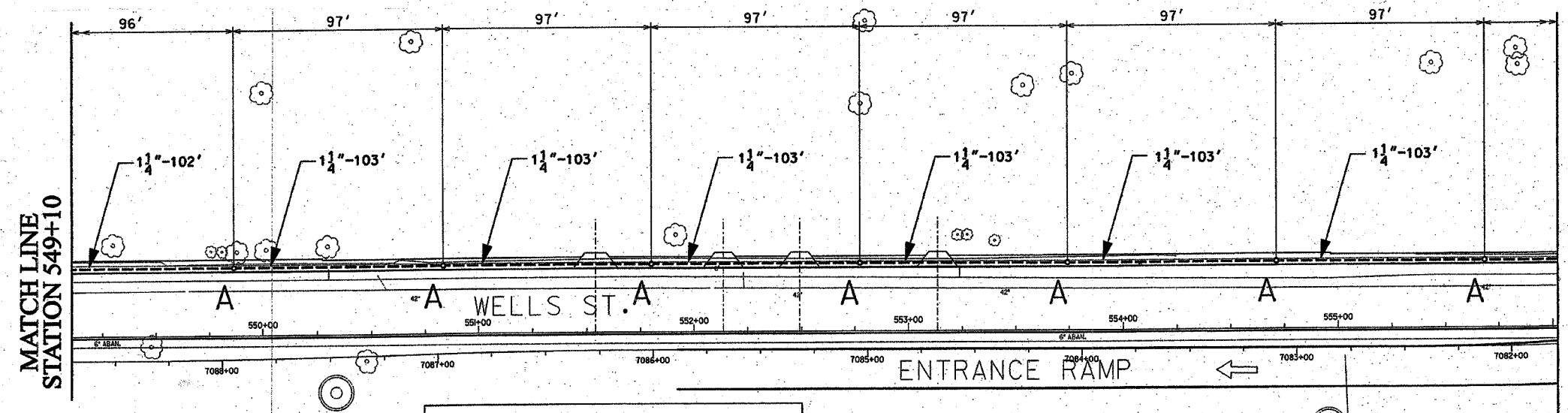
F. A. RTE	SECTION	COUNTY	TOTAL SHEETS	SHEET NO
90/94	*	COOK	35	21
STA. 539+40		TO STA. 556+00		
FED. ROAD DIST NO. 1		ILLINOIS		
FED AID PROJECTS				

* 2004-067L



1 1/4" DIRECT BORED CONDUIT SCHEDULE #80 AS PER IDOT ARTICLE 810.03
 2" DIRECT BORED CONDUIT SCHEDULE #80 AS PER IDOT ARTICLE 810.03
 2" CONDUIT SCHEDULE #40 INSTALLED IN TRENCH AS PER IDOT ARTICLE 810.03
 2" GALVANIZED RIGID STEEL ELBOW ON STRUCTURE
 2" GALVANIZED RIGID STEEL CONDUIT INSTALLED IN TRENCH AS PER IDOT ARTICLE 810.03
 HAND HOLE - 30" x 36" WITH 24" FRAME AND COVER
 CONCRETE FOUNDATION - 5' x 20", 10" B.C., 1" ANCHOR RODS.

NOTES: CONTRACTOR IS TO INSTALL UNDERGROUND CONDUIT AND PULL ROPE BETWEEN FOUNDATIONS AS WELL AS PERFORM THE FOLLOWING WORK ITEMS ACCORDING TO BUREAU OF ELECTRICITY SPECIFICATIONS:
 "A"- INSTALL 20" x 5' FOUNDATION, 10" B.C., 1" ANCHOR RODS AS PER DRAWING NO. 565, 2' OFF FACE OF CURB, UNLESS NOTED OTHERWISE. BUILD FOUNDATIONS FLUSH WITH SIDEWALK SURFACE.
 "B"- INSTALL 30" HANDHOLE AS PER DRAWING NO. 867 WITH 24" FRAME AND COVER
 "D"- INSTALL BASE FOUNDATION AS PER DWG. 876 FOR STREET LIGHTING CONTROLLER. TO BE INSTALLED ON TRAFFIC SIGNAL CONTRACT



FOR INSTALLATION PLAN SEE SHEET 04-017
 FOR REMOVAL PLAN SEE SHEETS 04-024, 04-025

NOTES:
 1. ROUTE PROPOSED CONDUIT RUN TO THE EXISTING MAJHOLE OR HANDHOLE AS SHOWN. DRILL THE EXISTING MAJHOLE OR HANDHOLE AND INSTALL PROPOSED CONDUIT THROUGH THE MAJHOLE OR HANDHOLE WALL. SEE DRAWING BOE-2 FOR DETAILS.
 2. PROVIDE A CONDUIT STUB AT MAJHOLE EXTENDING TO ONE FOOT PAST THE LIMITS OF SIDEWALK REPLACEMENT. PROVIDE A CONDUIT CAP FOR THE CONDUIT STUB. THE CONDUIT CAP WILL BE INCLUDED IN THE UNIT PRICE FOR THE CONDUIT OF SPECIFIED TYPE AND DIAMETER. NO SEPARATE PAYMENT WILL BE MADE SEE IDOT CONTRACT UJI 62536 AND 62795 FOR LIMITS OF SIDEWALK REPLACEMENT.

CITY OF CHICAGO			
DEPT. OF STREETS AND SANITATION			
BUREAU OF ELECTRICITY			
DIVISION OF ELECTRICAL ENGINEERING			
DRAFTSMAN:	CHIEF DRAFTSMAN:	ENGINEER:	
B. GARNSEY	ROBERT CARTER	B. GARNSEY	
SUPERVISING ENGINEER	ELEC. DESIGN ENGR.		
ENGINEER OF ELECTRICITY:			DWG. NO.
GEN'L. SUPT. OF ELECTRICITY:			04-003
DEPUTY COMMISSIONER:			
SIZE: 22" 36"	SCALE: 1"=30'	DATE: 1/20/04	
ILLINOIS DEPARTMENT OF TRANSPORTATION			
F.A.I. 90/94 (DAN RYAN EXPRESSWAY)			
59th St. to 47th St. (FRONTAGE ROADS)			
STREET LIGHTING UNDERGROUND CONDUIT FACILITIES			
SCALE: 1" = 30'		DRAWN BY: B.T.G.	
DATE: February 11, 2005		CHECKED BY: O.L.	

REVISIONS	
NAME	DATE