

FOR BIDDING AND CONSTRUCTION
SEE GENERAL NOTES 26 AND 27
ON SHEET 2.

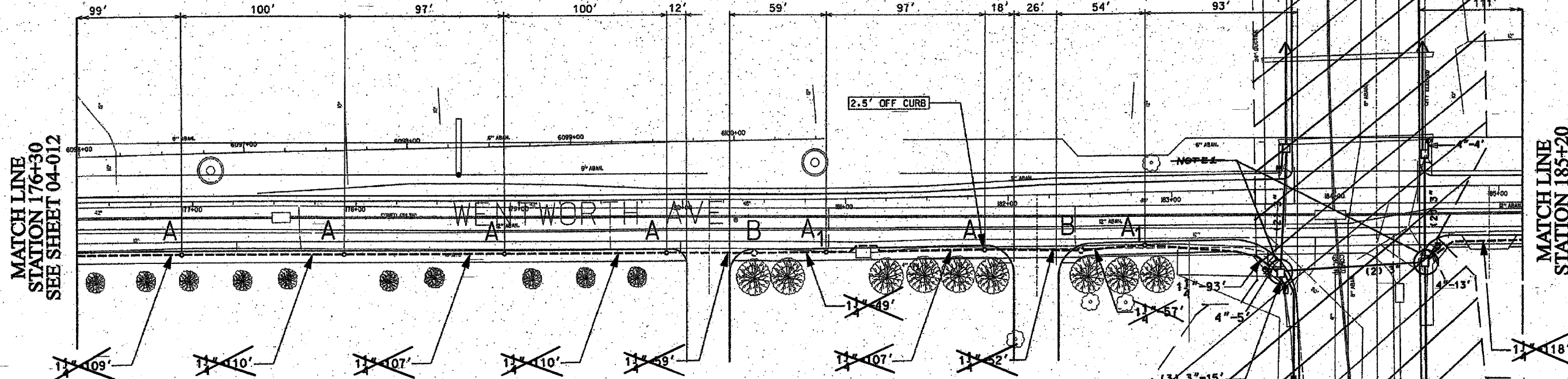
NOTE: CONTRACTOR IS TO CONTACT ALL UTILITY COMPANIES TO
VERIFY EXACT LOCATION OF UNDERGROUND UTILITIES PRIOR
TO START OF CONSTRUCTION WORK. MOVE FOUNDATIONS AND
CONDUIT RUNS ACCORDINGLY.

FOR INSTALLATION PLAN SEE SHEETS 04-022-04-023
FOR REMOVAL PLAN SEE SHEET 04-029-04-030

62807

F. A. R.T.E.	SECTION	COUNTY	TOTAL SHEETS	SHEET NO.
98/94	6	COOK	37	24
STA. 176+00	TO STA. 181+00			
FED. ROAD DIST. NO. 1	ILLINOIS	FED AID PROJECTS		

2004-0681



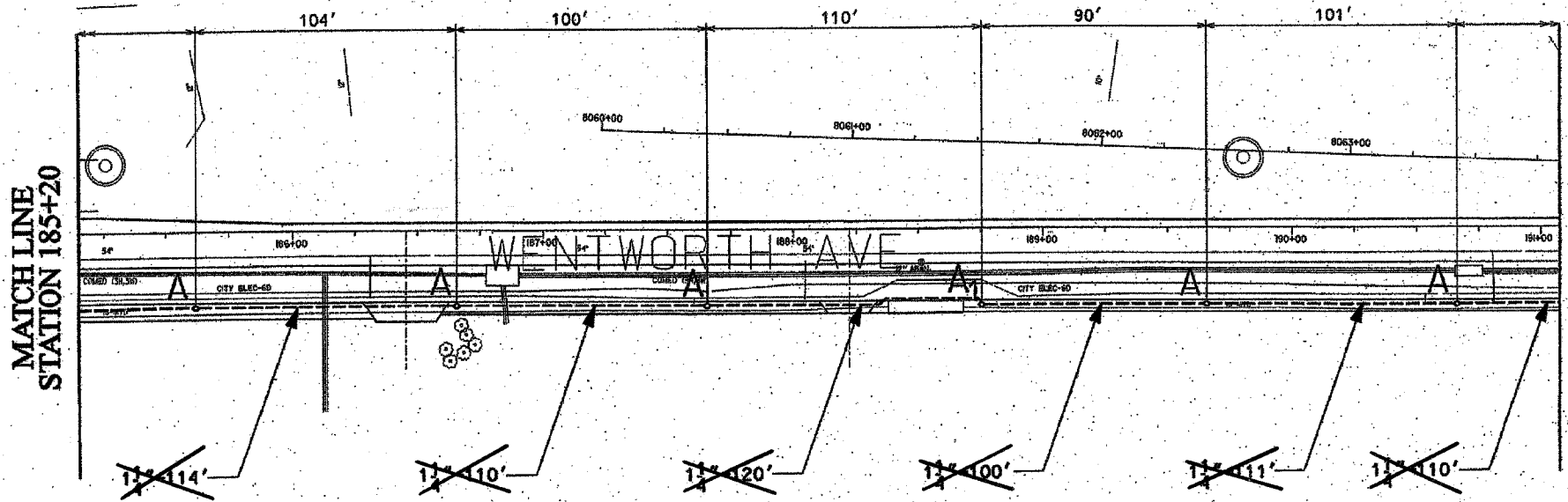
MATCH LINE
STATION 176+30
SEE SHEET 04-012

MATCH LINE
STATION 185+20

1. DIRECT BORED CONDUIT SCHEDULE #00 AS PER 1907 ARTICLE 810-07
HAND HOLE - 30" x 36" WITH 24" FRAME AND COVER
CONCRETE FOUNDATION - 5' x 20", 10" B.C., 1" ANCHOR RODS
OFFSET CONCRETE FOUNDATION - 5' x 20", 10" B.C., 1" ANCHOR RODS

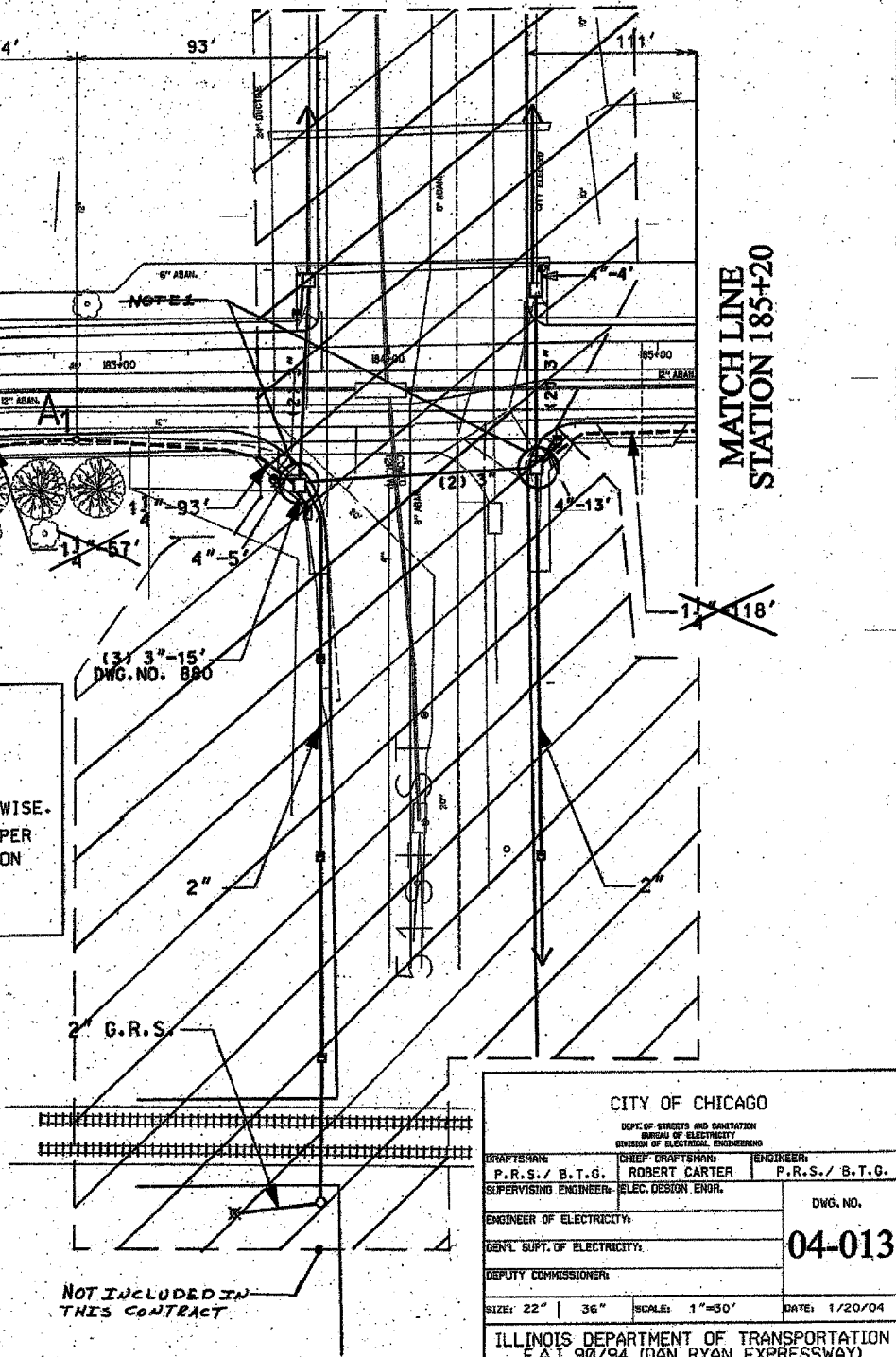
NOTES: CONTRACTOR IS TO INSTALL UNDERGROUND CONDUIT AND PULL ROPE BETWEEN
FOUNDATIONS AS WELL AS PERFORM THE FOLLOWING WORK ITEMS ACCORDING TO
BUREAU OF ELECTRICITY SPECIFICATIONS:
"A" - INSTALL 20" x 5' FOUNDATION, 10" B.C., 1" ANCHOR RODS AS PER DRAWING
No. 565, FLUSH IN CONCRETE SIDEWALK, 2' OFF FACE OF CURB, UNLESS NOTED OTHERWISE.
"A1" - INSTALL 20" x 5' OFFSET FOUNDATION, 10" B.C., 1" ANCHOR RODS SIMILAR AS PER
DRAWING No. 937, 2' OFF FACE OF CURB, UNLESS NOTED OTHERWISE. BUILD FOUNDATION
FLUSH WITH SIDEWALK.
"B" - INSTALL 30" HANDHOLE AS PER DRAWING NO. 867 WITH 24" FRAME AND COVER.

NOTE:
1. ROUTE PROPOSED CONDUIT RUN TO EXISTING
MANHOLE AS SHOWN. DRILL EXISTING MANHOLE
AND INSTALL PROPOSED CONDUIT THROUGH
MANHOLE WALL. SEE DRAWING B0E-2 FOR DETAILS.



MATCH LINE
STATION 185+20

MATCH LINE
STATION 191+05
SEE SHEET 04-014



CITY OF CHICAGO
DEPT. OF STREETS AND SANITATION
BUREAU OF ELECTRICITY
DIVISION OF ELECTRICAL ENGINEERING

DRAFTSMAN P.R.S./ B.T.G.	CHIEF DRAFTSMAN ROBERT CARTER	ENGINEER P.R.S./ B.T.G.
SUPERVISING ENGINEER ELEC. DESIGN ENGR.		DWG. NO. 04-013
ENGINEER OF ELECTRICITY:		
GEN'L SUPT. OF ELECTRICITY:		
DEPUTY COMMISSIONER:		

SIZE: 22" x 36" SCALE: 1" = 30' DATE: 1/20/04

ILLINOIS DEPARTMENT OF TRANSPORTATION
F.A.I. 98/94 (DAN RYAN EXPRESSWAY)
57th St. TO 47th St. (FRONTAGE ROADS)

STREET LIGHTING
UNDERGROUND CONDUIT FACILITIES

SCALE: 1" = 30' DRAWN BY: B.T.G.
DATE: February 11, 2005 CHECKED BY: O.L.

REVISIONS	
NAME	DATE

△ Revised sheet 9/9/05