

F.A.I. RTE.	SECTION	COUNTY	TOTAL SHEETS	SHEET NO.
90/94	2004-068L	COOK	37	1

D-91-419-01

STATE OF ILLINOIS
DEPARTMENT OF TRANSPORTATION
DIVISION OF HIGHWAYS

**PLANS FOR PROPOSED
FEDERAL AID HIGHWAY**

F.A.I. ROUTE 90/94 (DAN RYAN EXPRESSWAY)
SECTION 2004-068L

~~PROJECT: IM 094 3(387)057~~

59th ST TO 47th ST (FRONTAGE ROADS)
CITY OF CHICAGO LIGHTING CONDUIT & FOUNDATIONS
WENTWORTH AVENUE
COOK COUNTY
C-91-292-04



LOCATION OF SECTION INDICATED THUS: —

INDEX OF SHEETS

SHEET	DESCRIPTION
1	COVER SHEET
2	GENERAL NOTES AND PROJECT COMMITMENTS
3-7	SUGGESTED CONSTRUCTION SCHEDULE
8	SUMMARY OF QUANTITIES
9-19	ALIGNMENT PLANS, SURVEY TIES AND CONTROL POINTS
20-26	STREET LIGHTING UNDERGROUND CONDUIT FACILITIES
27-29	REMOVAL OF STREET LIGHTING EQUIPMENT DELETED
30-36	BOE STANDARD DETAILS
37	TEMPORARY INFORMATION SIGNING

IDOT HIGHWAY STANDARDS

STANDARD	DESCRIPTION
000001-04	STANDARD SYMBOLS, ABBREVIATIONS, AND PATTERNS
001006	DECIMAL OF AN INCH AND OF A FOOT
701701-04	URBAN LANE CLOSURE MULTILANE INTERSECTION
701801-03	LANE CLOSURE MULTILANE 1W OR 2W CROSSWALK OR SIDEWALK CLOSURE
702001-05	TRAFFIC CONTROL DEVICES

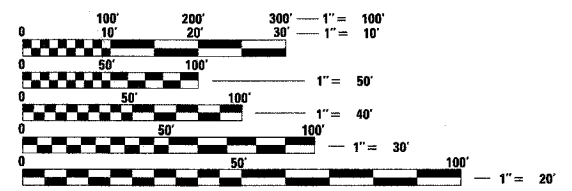
PROJECT LOCATED IN CITY OF CHICAGO

DESIGN DESIGNATION

WENTWORTH AVE: 6259 (20) URBAN COLLECTOR

ADT (2020)	DESIGN SPEED	POSTED SPEED
11,000	30	25

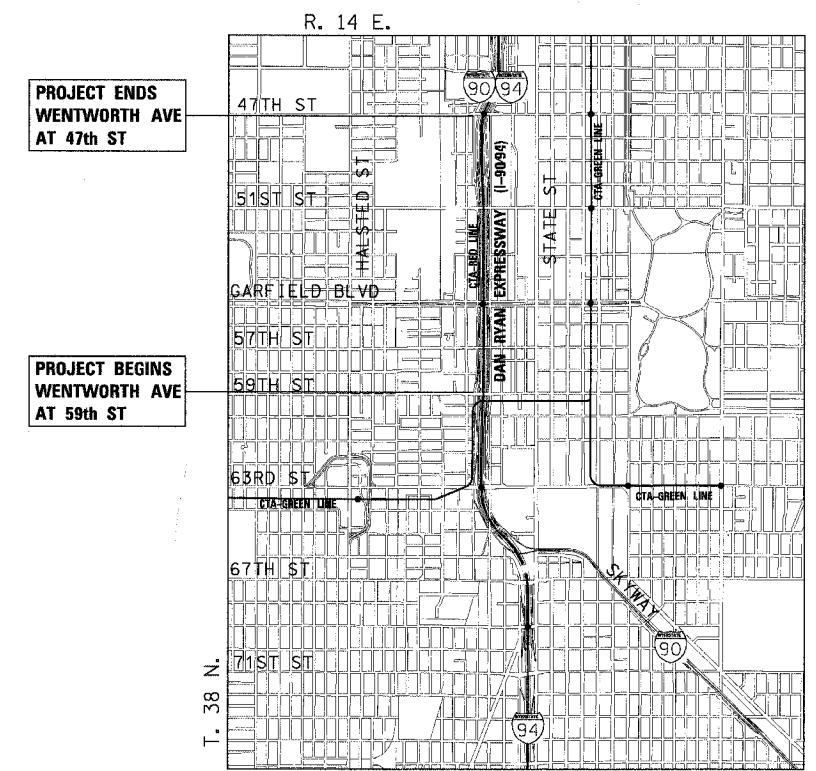
FRONTAGE ROADS:
WENTWORTH AVE



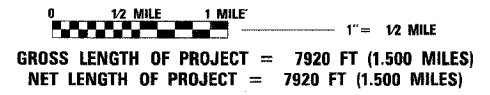
FULL SIZE PLANS HAVE BEEN PREPARED USING STANDARD ENGINEERING SCALES. REDUCED SIZED PLANS WILL NOT CONFORM TO STANDARD SCALES. IN MAKING MEASUREMENTS ON REDUCED PLANS, THE ABOVE SCALES MAY BE USED.

DIGGER:
CHICAGO UTILITY ALERT NETWORK
(312) 744-7000

CONTRACT NO. 62807



LOCATION MAP



DISTRICT ONE DESIGN/CONSULTANT SERVICES PROJECT MANAGER
RAJENDRA SHAH (847) 705-4555

JOHN A. LUKOWSKI
062-053522
REGISTERED PROFESSIONAL ENGINEER OF ILLINOIS
1-17
SHEET NOS.
11-30-05 EXPIRES
2-2-05 DATE

JAMES P. COLEMAN
062-033912
REGISTERED PROFESSIONAL ENGINEER OF ILLINOIS
20-29
SHEET NOS.
11-30-05 EXPIRES
02-02-2005 DATE

STATE OF ILLINOIS
DEPARTMENT OF TRANSPORTATION
DIVISION OF HIGHWAYS

SUBMITTED February 9, 20 05
Dina O'Keefe/PA
DEPUTY DIRECTOR OF HIGHWAYS, REGION ENGINEER

March 25, 20 05
Mike Nune
ENGINEER OF DESIGN AND ENVIRONMENT

March 25, 20 05
Victor Madueno
DIRECTOR OF HIGHWAYS, CHIEF ENGINEER

PRINTED BY THE AUTHORITY OF THE STATE OF ILLINOIS

CTE ENGINEERS
CONSOER TOWNSEND ENVIRODYNE ENGINEERS, INC.
303 EAST WACKER DRIVE, SUITE 600
CHICAGO ILLINOIS 60601-5212, PHONE: (312) 938-0300

Rev. 9-9-05

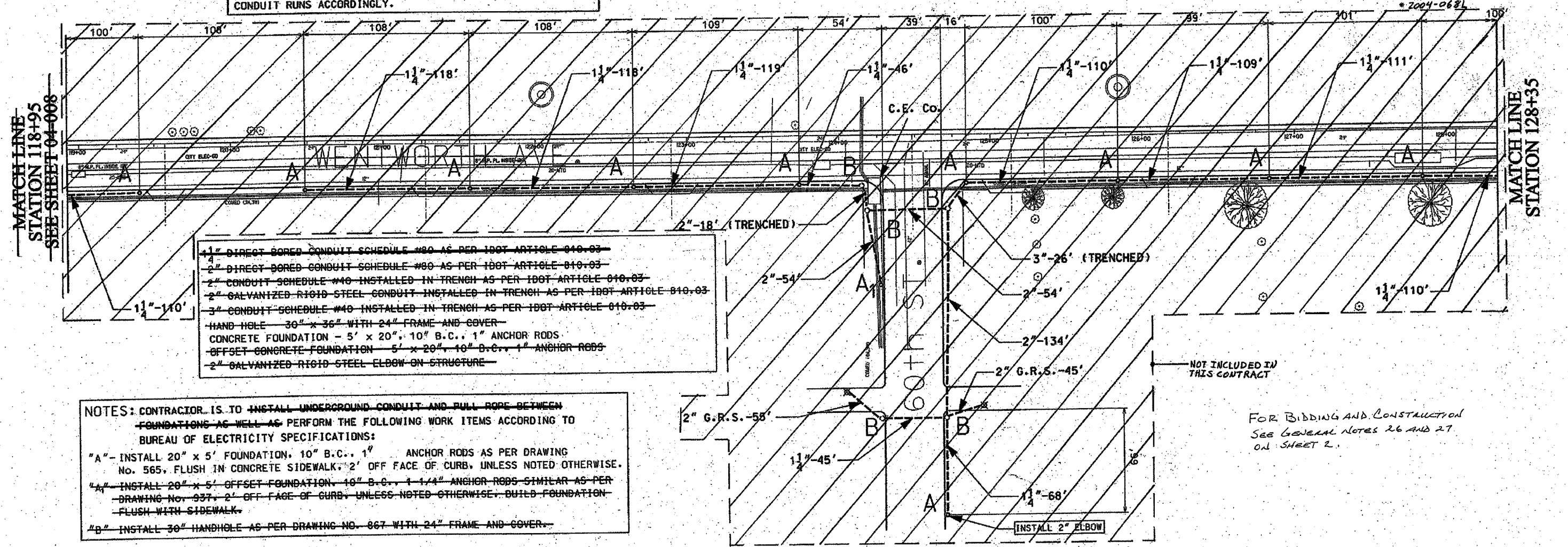
62307

F.A. #	SECTION	COUNTY	TOTAL SHEETS	SHEET NO.
90/94	*	COOK	37	20
STA. 118+00	TO STA. 135+00			
FED. ROAD DIST. NO. 1	ILLINOIS	FED AID PROJECTS		

NOTE: CONTRACTOR IS TO CONTACT ALL UTILITY COMPANIES TO VERIFY EXACT LOCATION OF UNDERGROUND UTILITIES PRIOR TO START OF CONSTRUCTION WORK. MOVE FOUNDATIONS AND CONDUIT RUNS ACCORDINGLY.



* 2004-0682



- 1 1/4" DIRECT BORED CONDUIT SCHEDULE #80 AS PER IDOT ARTICLE 010.03
- 2" DIRECT BORED CONDUIT SCHEDULE #80 AS PER IDOT ARTICLE 010.03
- 2" CONDUIT SCHEDULE #40 INSTALLED IN TRENCH AS PER IDOT ARTICLE 010.03
- 2" GALVANIZED RIGID STEEL CONDUIT INSTALLED IN TRENCH AS PER IDOT ARTICLE 010.03
- 3" CONDUIT SCHEDULE #40 INSTALLED IN TRENCH AS PER IDOT ARTICLE 010.03
- HAND HOLE 30" x 36" WITH 24" FRAME AND COVER
- CONCRETE FOUNDATION - 5' x 20", 10" B.C., 1" ANCHOR RODS
- OFFSET CONCRETE FOUNDATION 5' x 20", 10" B.C., 1" ANCHOR RODS
- 2" GALVANIZED RIGID STEEL ELBOW ON STRUCTURE

NOTES: CONTRACTOR IS TO INSTALL UNDERGROUND CONDUIT AND PULL ROPE BETWEEN FOUNDATIONS AS WELL AS PERFORM THE FOLLOWING WORK ITEMS ACCORDING TO BUREAU OF ELECTRICITY SPECIFICATIONS:

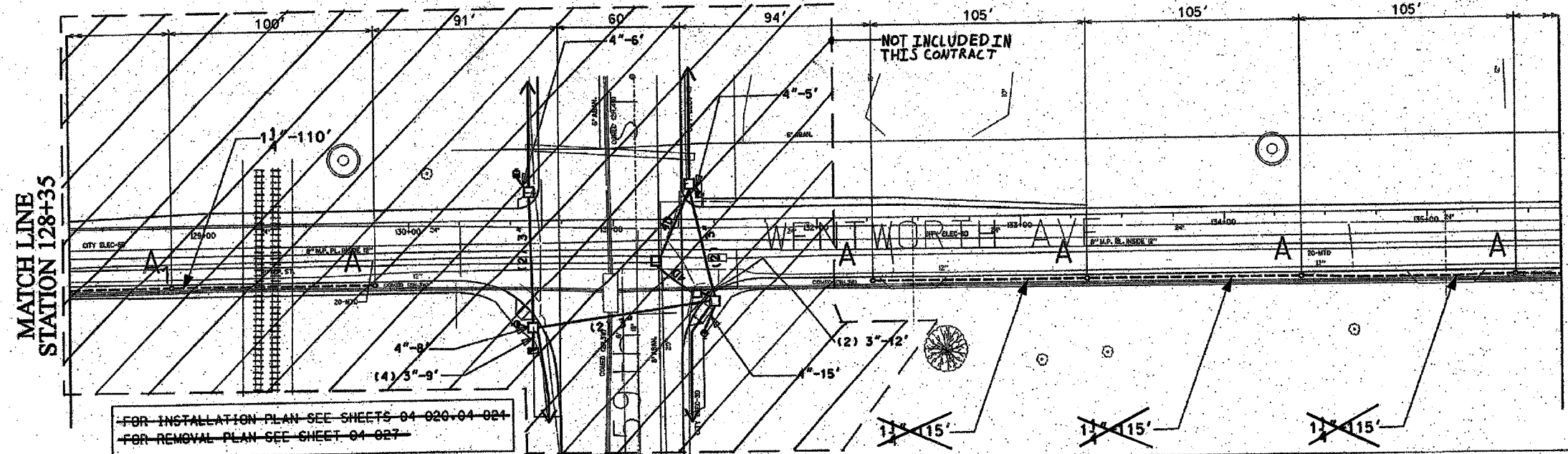
"A" - INSTALL 20" x 5' FOUNDATION, 10" B.C., 1" ANCHOR RODS AS PER DRAWING No. 565, FLUSH IN CONCRETE SIDEWALK, 2' OFF FACE OF CURB, UNLESS NOTED OTHERWISE.

"A₁" - INSTALL 20" x 5' OFFSET FOUNDATION, 10" B.C., 1 1/4" ANCHOR RODS SIMILAR AS PER DRAWING No. 937, 2' OFF FACE OF CURB, UNLESS NOTED OTHERWISE, BUILD FOUNDATION FLUSH WITH SIDEWALK.

"B" - INSTALL 30" HANDHOLE AS PER DRAWING NO. 867 WITH 24" FRAME AND COVER.

NOT INCLUDED IN THIS CONTRACT

FOR BIDDING AND CONSTRUCTION
SEE GENERAL NOTES 26 AND 27
ON SHEET 2.



FOR INSTALLATION PLAN SEE SHEETS 04-020-04-024
FOR REMOVAL PLAN SEE SHEET 04-027

MATCH LINE
STATION 135+65
SEE SHEET 04-010

CITY OF CHICAGO
DEPT. OF STREET AND SANITATION
BUREAU OF ELECTRICITY
DIVISION OF ELECTRICAL ENGINEERING

DRAFTSMAN	CHIEF DRAFTSMAN	ENGINEER
P.R.S./B.T.G.	ROBERT CARTER	P.R.S./B.T.G.
SUPERVISING ENGINEER	ELEC. DESIGN ENGR.	
ENGINEER OF ELECTRICITY		DWG. NO.
GEN'L Supt. OF ELECTRICITY		04-009
DEPUTY COMMISSIONER		

SIZE: 22" x 36" SCALE: 1" = 30' DATE: 1/20/04

ILLINOIS DEPARTMENT OF TRANSPORTATION
F.A.I. 90/94 (DAN RYAN EXPRESSWAY)
57th St. TO 47th St. (FRONTAGE ROADS)

STREET LIGHTING
UNDERGROUND CONDUIT FACILITIES

SCALE: 1" = 30' DRAWN BY: B.T.G.
DATE: February 11, 2005 CHECKED BY: D.L.

REVISIONS	
NAME	DATE

△ Revised Sheet 9/9/05

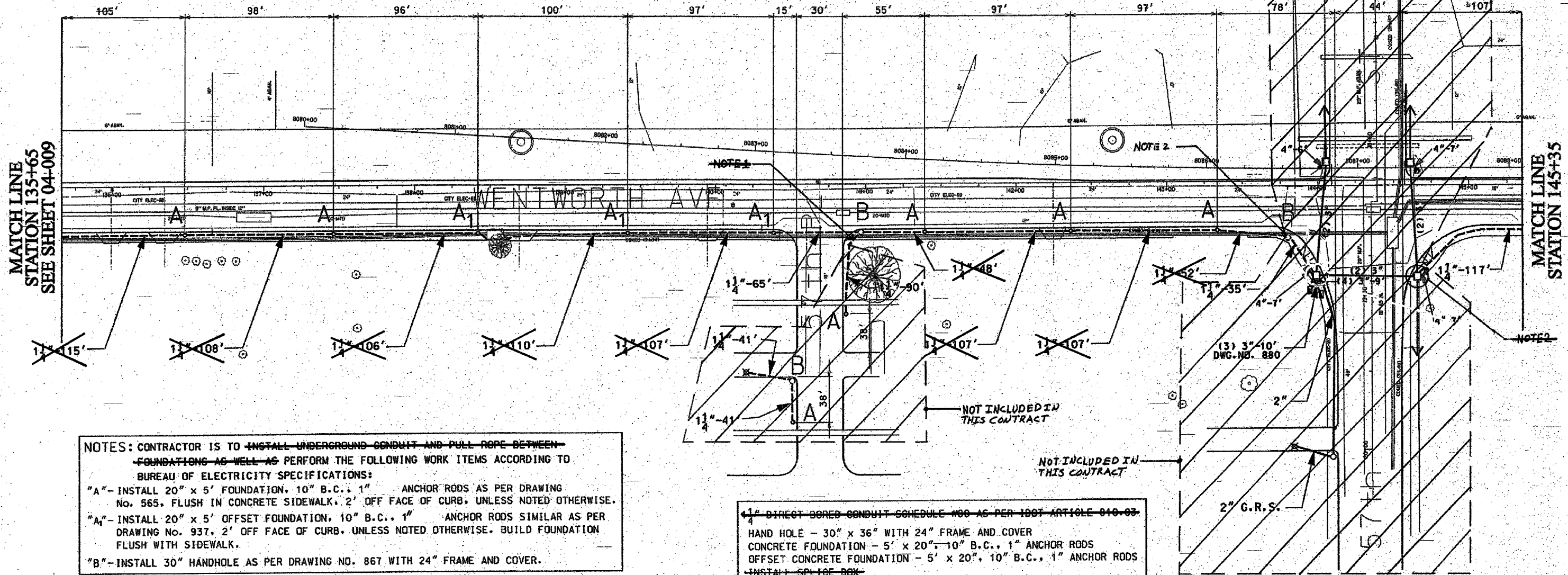
FOR BIDDING AND CONSTRUCTION
SEE GENERAL NOTES 26 AND 27
ON SHEET 2.

NOTE: CONTRACTOR IS TO CONTACT ALL UTILITY COMPANIES TO
VERIFY EXACT LOCATION OF UNDERGROUND UTILITIES PRIOR
TO START OF CONSTRUCTION WORK. MOVE FOUNDATIONS AND
CONDUIT RUNS ACCORDINGLY.

FOR INSTALLATION PLAN SEE SHEET 04-024
FOR REMOVAL PLAN SEE SHEETS 04-027, 04-028

62807

F. A. RTE.	SECTION	COUNTY	TOTAL SHEETS	SHEET NO.
90/94		COOK	37	21
STA. 135+66	TO STA. 151+70			
FED. ROAD DIST. NO. 1	ILLINOIS	FED. AID PROJECTS		
* 2004-068L				



MATCH LINE
STATION 135+65
SEE SHEET 04-009

MATCH LINE
STATION 145+35

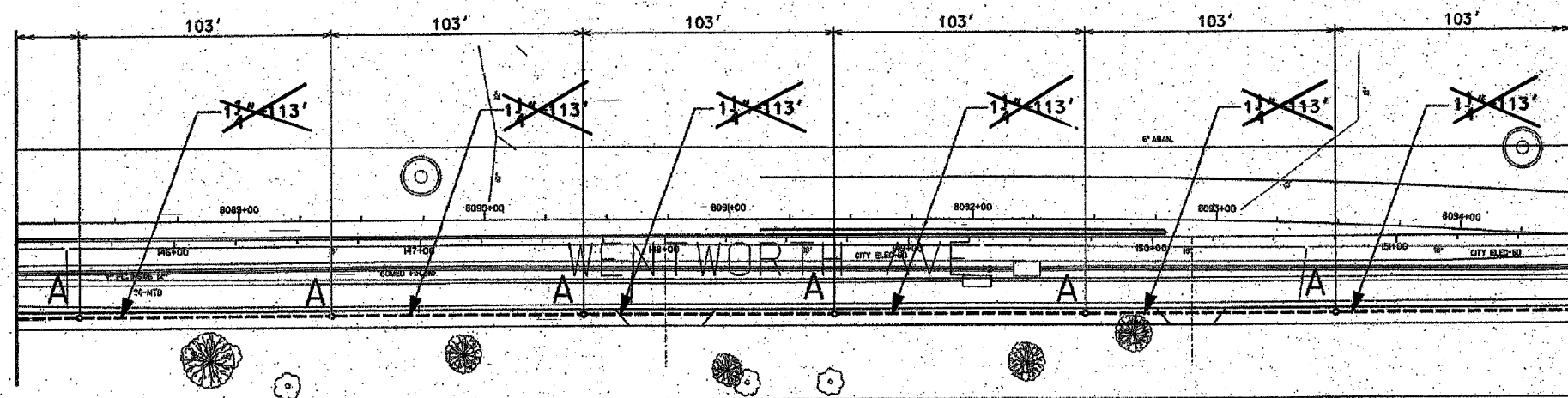
NOTES: CONTRACTOR IS TO ~~INSTALL UNDERGROUND CONDUIT AND PULL ROPE BETWEEN FOUNDATIONS AS WELL AS~~ PERFORM THE FOLLOWING WORK ITEMS ACCORDING TO BUREAU OF ELECTRICITY SPECIFICATIONS:
 "A"- INSTALL 20" x 5' FOUNDATION, 10" B.C., 1" ANCHOR RODS AS PER DRAWING NO. 565, FLUSH IN CONCRETE SIDEWALK, 2' OFF FACE OF CURB, UNLESS NOTED OTHERWISE.
 "A₁"- INSTALL 20" x 5' OFFSET FOUNDATION, 10" B.C., 1" ANCHOR RODS SIMILAR AS PER DRAWING NO. 937, 2' OFF FACE OF CURB, UNLESS NOTED OTHERWISE. BUILD FOUNDATION FLUSH WITH SIDEWALK.
 "B"- INSTALL 30" HANDHOLE AS PER DRAWING NO. 867 WITH 24" FRAME AND COVER.

~~1 1/4" DIRECT BORED CONDUIT SCHEDULE #00 AS PER 1007 ARTICLE 810-03.~~
 HAND HOLE - 30" x 36" WITH 24" FRAME AND COVER
 CONCRETE FOUNDATION - 5' x 20", 10" B.C., 1" ANCHOR RODS
 OFFSET CONCRETE FOUNDATION - 5' x 20", 10" B.C., 1" ANCHOR RODS
 INSTALL SPLICE BOX

NOT INCLUDED IN THIS CONTRACT

MATCH LINE
STATION 145+35

MATCH LINE
STATION 151+70
SEE SHEET 04-011



NOTES:
 1. PROVIDE A CONDUIT STUB AT HANDHOLE EXTENDING TO ONE FOOT PAST THE LIMITS OF SIDEWALK REPLACEMENT. PROVIDE A CONDUIT CAP FOR THE CONDUIT STUB. THE CONDUIT CAP WILL BE INCLUDED IN THE UNIT PRICE FOR THE CONDUIT OF SPECIFIED TYPE AND DIAMETER. SEPARATE PAYMENT WILL BE MADE. SEE DETAIL DRAWING NO. 62.796 FOR LIMITS OF SIDEWALK REPLACEMENT.
 2. ROUTE PROPOSED CONDUIT RUN TO THE EXISTING HANDHOLE OR HANDHOLE AS SHOWN. DRILL THE EXISTING HANDHOLE OR HANDHOLE AND INSTALL PROPOSED CONDUIT THROUGH THE HANDHOLE OR HANDHOLE WALL. SEE DRAWING B05-2 FOR DETAILS.

CITY OF CHICAGO DEPT. OF STREETS AND SANITATION BUREAU OF ELECTRICITY			
DRAFTSMAN P.R.S./B.T.G.	CHIEF DRAFTSMAN ROBERT CARTER	ENGINEER P.R.S./B.T.G.	DWG. NO. 04-010
SUPERVISING ENGINEER ELEC. DESIGN ENGR.		GEN'L. Supt. OF ELECTRICITY	
DEPUTY COMMISSIONER		DATE: 1/20/04	
ILLINOIS DEPARTMENT OF TRANSPORTATION F.A.T. 90/94 (DAN RYAN EXPRESSWAY) 57th St. to 47th St. (FRONTAGE ROADS)			
STREET LIGHTING UNDERGROUND CONDUIT FACILITIES			
SCALE: 1" = 30'		DRAWN BY: B.T.G.	
DATE: February 11, 2005		CHECKED BY: O.L.	

REVISIONS	
NAME	DATE

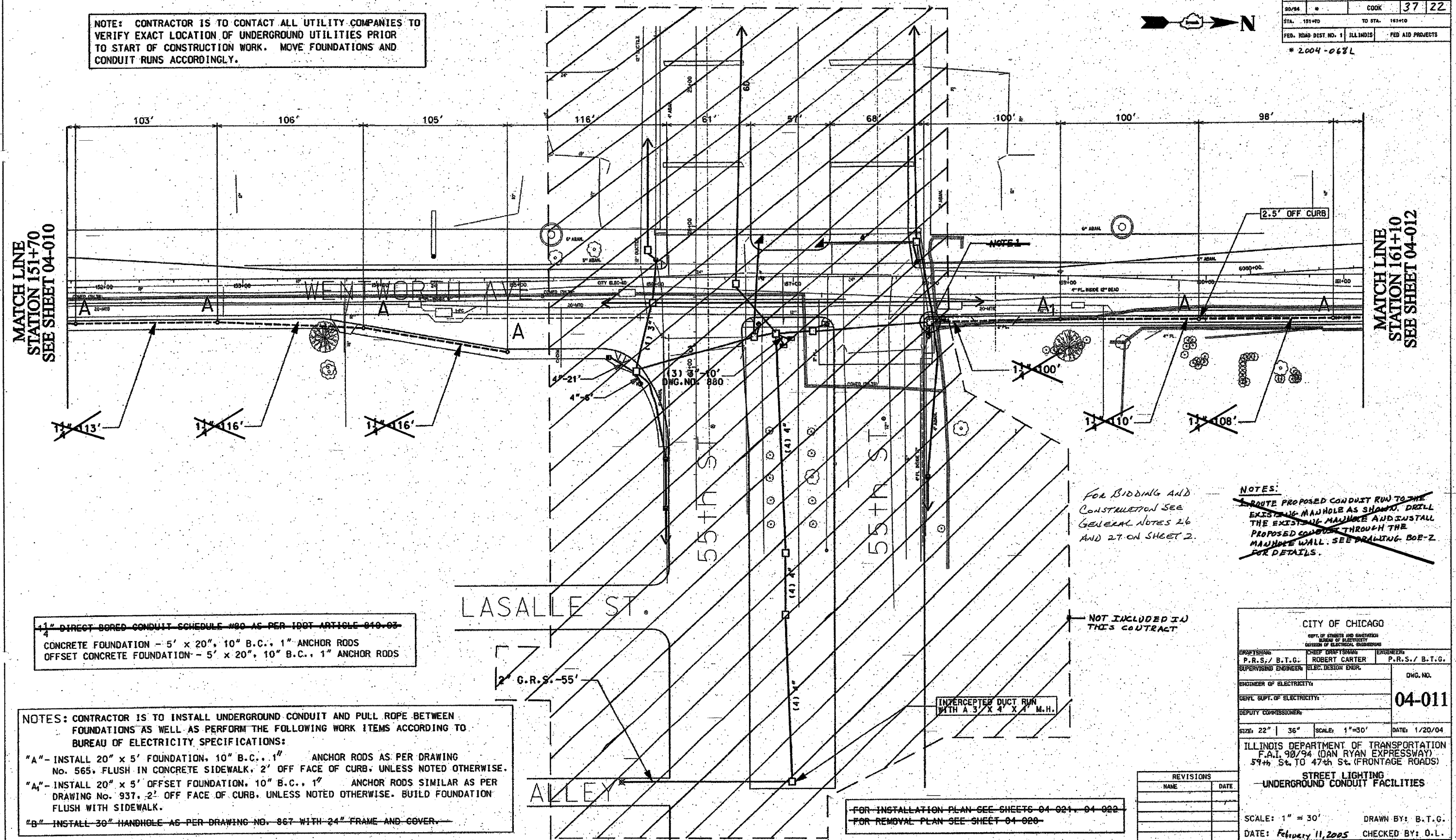
Revised sheet 9/9/05

62807

F. A. RTE.	SECTION	COUNTY	TOTAL SHEETS	SHEET NO.
90/94		COOK	37	22
STA. 151+00	TO STA. 161+10			
FED. ROAD DIST. NO. 1	ILLINOIS	FED AID PROJECTS		

* 2.004-068L

NOTE: CONTRACTOR IS TO CONTACT ALL UTILITY COMPANIES TO VERIFY EXACT LOCATION OF UNDERGROUND UTILITIES PRIOR TO START OF CONSTRUCTION WORK. MOVE FOUNDATIONS AND CONDUIT RUNS ACCORDINGLY.



MATCH LINE
STATION 151+70
SEE SHEET 04-010

MATCH LINE
STATION 161+10
SEE SHEET 04-012

1" DIRECT BORED CONDUIT SCHEDULE #80 AS PER IDOT ARTICLE 810.03
CONCRETE FOUNDATION - 5' x 20", 10" B.C., 1" ANCHOR RODS
OFFSET CONCRETE FOUNDATION - 5' x 20", 10" B.C., 1" ANCHOR RODS

NOTES: CONTRACTOR IS TO INSTALL UNDERGROUND CONDUIT AND PULL ROPE BETWEEN FOUNDATIONS AS WELL AS PERFORM THE FOLLOWING WORK ITEMS ACCORDING TO BUREAU OF ELECTRICITY SPECIFICATIONS:
"A"- INSTALL 20" x 5' FOUNDATION, 10" B.C., 1" ANCHOR RODS AS PER DRAWING No. 565. FLUSH IN CONCRETE SIDEWALK, 2' OFF FACE OF CURB, UNLESS NOTED OTHERWISE.
"A₁"- INSTALL 20" x 5' OFFSET FOUNDATION, 10" B.C., 1" ANCHOR RODS SIMILAR AS PER DRAWING No. 937. 2' OFF FACE OF CURB, UNLESS NOTED OTHERWISE. BUILD FOUNDATION FLUSH WITH SIDEWALK.
"B"- INSTALL 30" HANDHOLE AS PER DRAWING NO. 967 WITH 24" FRAME AND COVER.

FOR BIDDING AND CONSTRUCTION SEE GENERAL NOTES 26 AND 27 ON SHEET 2.

NOTES:
~~ROUTE PROPOSED CONDUIT RUN TO THE EXISTING MANHOLE AS SHOWN. DRILL THE EXISTING MANHOLE AND INSTALL THE PROPOSED CONDUIT THROUGH THE MANHOLE WALL. SEE DRAWING BOE-2 FOR DETAILS.~~

NOT INCLUDED IN THIS CONTRACT

INTERCEPTED DUCT RUN WITH A 3' X 4' X 4' M.H.

FOR INSTALLATION PLAN SEE SHEETS 04-021, 04-022
FOR REMOVAL PLAN SEE SHEET 04-020

CITY OF CHICAGO		
DEPT. OF STREETS AND SANITATION		
BUREAU OF ELECTRICITY		
DIVISION OF ELECTRICAL ENGINEERING		
DRAFTSMAN	CHIEF DRAFTSMAN	ENGINEER
P.R.S./ B.T.G.	ROBERT CARTER	P.R.S./ B.T.G.
SUPERVISING ENGINEER	ELEC. DESIGN ENGR.	
ENGINEER OF ELECTRICITY:		DWG. NO.
DEPT. Supt. OF ELECTRICITY:		04-011
DEPUTY COMMISSIONER:		
SIZE: 22" 36"	SCALE: 1"=30'	DATE: 1/20/04

ILLINOIS DEPARTMENT OF TRANSPORTATION
F.A.I. 90/94 (DAN RYAN EXPRESSWAY)
59th St. TO 47th St. (FRONTAGE ROADS)
STREET LIGHTING
UNDERGROUND CONDUIT FACILITIES

REVISIONS	
NAME	DATE

SCALE: 1" = 30'
DATE: February 11, 2005
DRAWN BY: B.T.G.
CHECKED BY: O.L.

Revised sheet 9/9/05

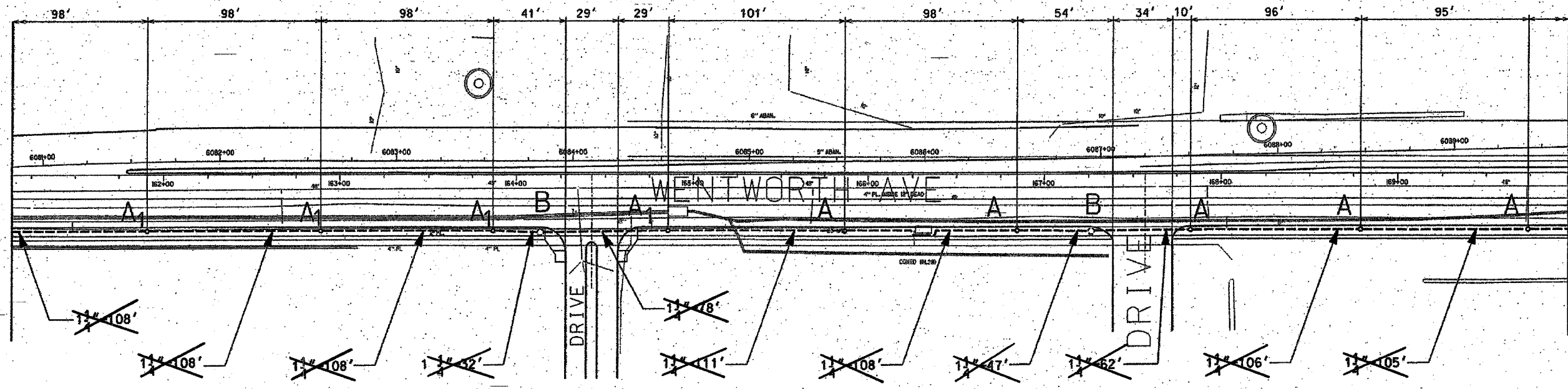
62807

F. A. RITE	SECTION	COUNTY	TOTAL SHEETS	SHEET NO.
90/94	•	COOK	37	23
STA. 161+10		TO STA. 176+30		
FED. ROAD DIST NO. 1	ILLINOIS	FED AID PROJECTS		

* 2004-068L

MATCH LINE
STATION 161+10
SEE SHEET 04-011

MATCH LINE
STATION 169+95



NOTE: CONTRACTOR IS TO CONTACT ALL UTILITY COMPANIES TO VERIFY EXACT LOCATION OF UNDERGROUND UTILITIES PRIOR TO START OF CONSTRUCTION WORK. MOVE FOUNDATIONS AND CONDUIT RUNS ACCORDINGLY.

NOTES: CONTRACTOR IS TO INSTALL UNDERGROUND CONDUIT AND PULL ROPE BETWEEN FOUNDATIONS AS WELL AS PERFORM THE FOLLOWING WORK ITEMS ACCORDING TO BUREAU OF ELECTRICITY SPECIFICATIONS:

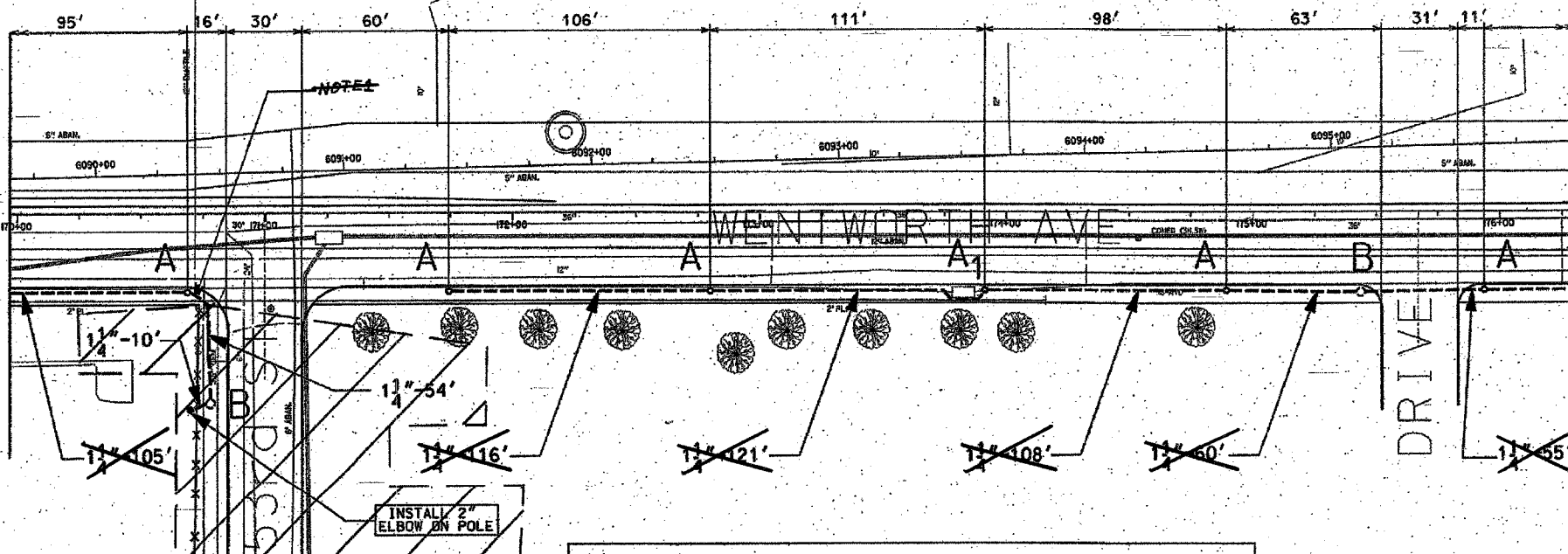
"A"- INSTALL 20" x 5' FOUNDATION, 10" B.C., 1" ANCHOR RODS AS PER DRAWING NO. 565, FLUSH IN CONCRETE SIDEWALK, 2' OFF FACE OF CURB, UNLESS NOTED OTHERWISE.

"A"- INSTALL 20" x 5' OFFSET FOUNDATION, 10" B.C., 1" ANCHOR RODS SIMILAR AS PER DRAWING NO. 937, 2' OFF FACE OF CURB, UNLESS NOTED OTHERWISE. BUILD FOUNDATION FLUSH WITH SIDEWALK.

"B"- INSTALL 30" HANDHOLE AS PER DRAWING NO. 867 WITH 24" FRAME AND COVER.

MATCH LINE
STATION 169+95

MATCH LINE
STATION 176+30
SEE SHEET 04-013



NOTES:

1. PROVIDE A CONDUIT STUB AT HANDHOLE EXTENDING TO ONE FOOT PAST THE LIMITS OF SIDEWALK REPLACEMENT. PROVIDE A CONDUIT CAP FOR THE CONDUIT STUB. THE CONDUIT CAP WILL BE INCLUDED IN THE UNIT PRICE FOR THE CONDUIT OF SPECIFIED TYPE AND DIAMETER. NO SEPARATE PAYMENT WILL BE MADE. SEE DOT CONTRACT NO. 6279 FOR LIMITS OF SIDEWALK REPLACEMENT.

1/4" DIRECT BORED CONDUIT SCHEDULE #80 AS PER ISOT ARTICLE 310.63

HAND HOLE - 30" x 36" WITH 24" FRAME AND COVER

CONCRETE FOUNDATION - 5' x 20", 10" B.C., 1" ANCHOR RODS

OFFSET CONCRETE FOUNDATION - 5' x 20", 10" B.C., 1" ANCHOR RODS

2" GALVANIZED R1010 STEEL ELBOW ON STRUCTURE

FOR INSTALLATION PLAN SEE SHEET 04-022

FOR REMOVAL PLAN SEE SHEET 04-020

NOT INCLUDED IN THIS CONTRACT

CITY OF CHICAGO
DEPT. OF STREETS AND SANITATION
BUREAU OF ELECTRICITY
DIVISION OF ELECTRICAL ENGINEERING

DRAFTSMAN P.R.S./ B.T.G.	CHIEF DRAFTSMAN ROBERT CARTER	ENGINEER P.R.S./ B.T.G.
SUPERVISING ENGINEER	ELEC. DESIGN ENGR.	

DWG. NO. 04-012

ENGINEER OF ELECTRICITY:

GEN'L SUPT. OF ELECTRICITY:

DEPUTY COMMISSIONER:

SCALE: 1" = 30'

DATE: February 11, 2005

DRAWN BY: B.T.G.

CHECKED BY: O.L.

REVISIONS	
NAME	DATE

Δ Revised sheet 9/9/05

FOR BIDDING AND CONSTRUCTION
SEE GENERAL NOTES 26 AND 27
ON SHEET 2.

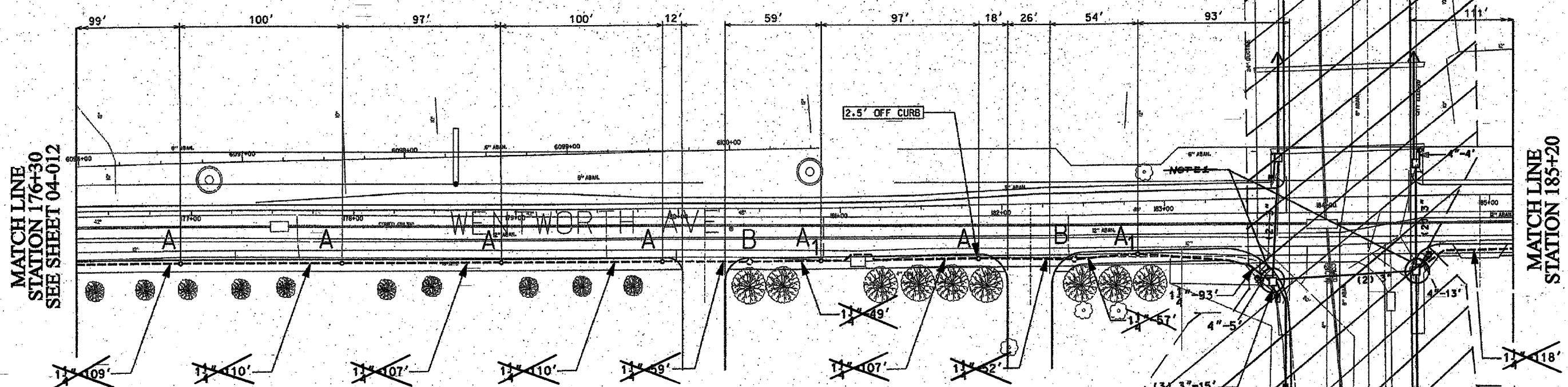
NOTE: CONTRACTOR IS TO CONTACT ALL UTILITY COMPANIES TO
VERIFY EXACT LOCATION OF UNDERGROUND UTILITIES PRIOR
TO START OF CONSTRUCTION WORK. MOVE FOUNDATIONS AND
CONDUIT RUNS ACCORDINGLY.

FOR INSTALLATION PLAN SEE SHEETS 04-022-04-023
FOR REMOVAL PLAN SEE SHEET 04-029-04-030

62807

F. A. RITE	SECTION	COUNTY	TOTAL SHEETS	SHEET NO.
98/94		COOK	37	24
STA. 176+00		TO STA. 181+00		
FED. ROAD DIST. NO. 1	ILLINOIS	FED AID PROJECTS		

2004-0681



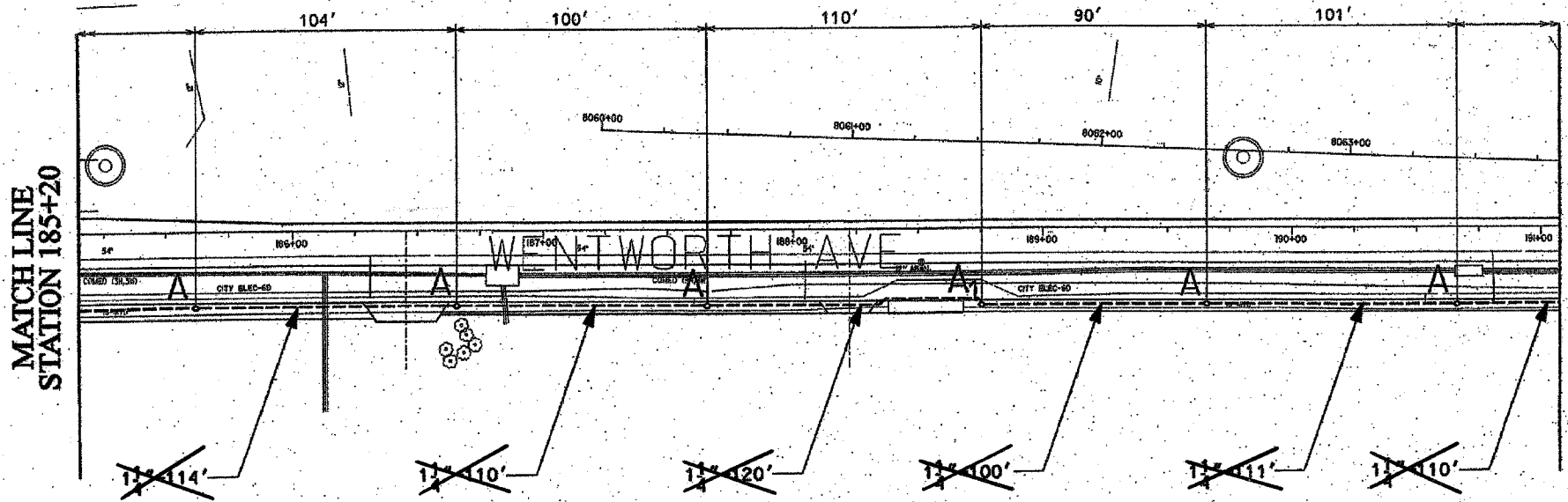
MATCH LINE
STATION 176+30
SEE SHEET 04-012

MATCH LINE
STATION 185+20

1. DIRECT BORED CONDUIT SCHEDULE #00 AS PER 1907 ARTICLE 810-07
HAND HOLE - 30" x 36" WITH 24" FRAME AND COVER
CONCRETE FOUNDATION - 5' x 20", 10" B.C., 1" ANCHOR RODS
OFFSET CONCRETE FOUNDATION - 5' x 20", 10" B.C., 1" ANCHOR RODS

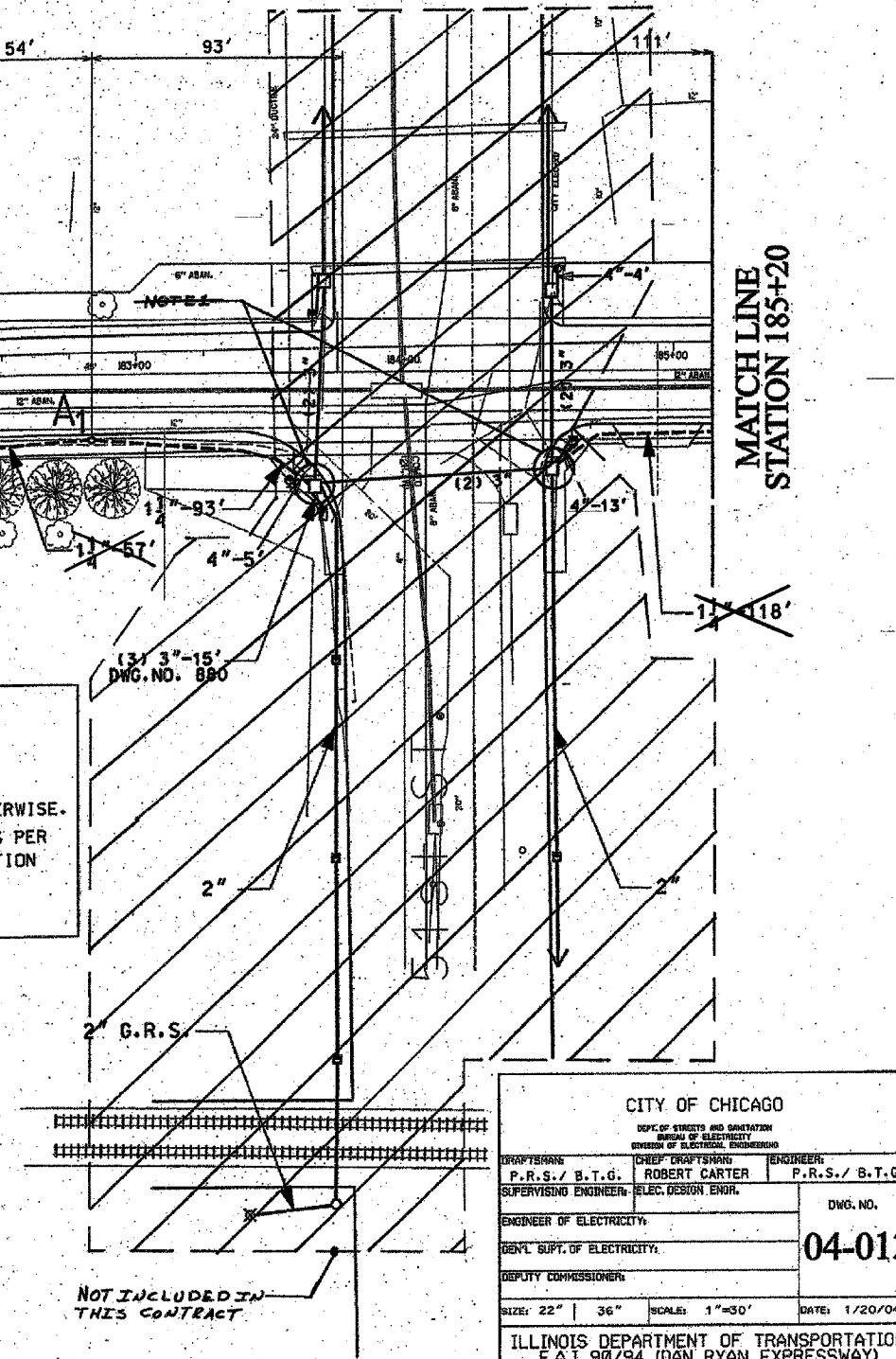
NOTES: CONTRACTOR IS TO INSTALL UNDERGROUND CONDUIT AND PULL ROPE BETWEEN
FOUNDATIONS AS WELL AS PERFORM THE FOLLOWING WORK ITEMS ACCORDING TO
BUREAU OF ELECTRICITY SPECIFICATIONS:
"A" - INSTALL 20" x 5' FOUNDATION, 10" B.C., 1" ANCHOR RODS AS PER DRAWING
No. 565, FLUSH IN CONCRETE SIDEWALK, 2' OFF FACE OF CURB, UNLESS NOTED OTHERWISE.
"A1" - INSTALL 20" x 5' OFFSET FOUNDATION, 10" B.C., 1" ANCHOR RODS SIMILAR AS PER
DRAWING No. 937, 2' OFF FACE OF CURB, UNLESS NOTED OTHERWISE. BUILD FOUNDATION
FLUSH WITH SIDEWALK.
"B" - INSTALL 30" HANDHOLE AS PER DRAWING NO. 867 WITH 24" FRAME AND COVER.

NOTE:
1. ROUTE PROPOSED CONDUIT RUN TO EXISTING
MANHOLE AS SHOWN. DRILL EXISTING MANHOLE
AND INSTALL PROPOSED CONDUIT THROUGH
MANHOLE WALL. SEE DRAWING B0E-2 FOR DETAILS.



MATCH LINE
STATION 185+20

MATCH LINE
STATION 191+05
SEE SHEET 04-014



NOT INCLUDED IN
THIS CONTRACT

CITY OF CHICAGO
DEPT. OF STREETS AND SANITATION
BUREAU OF ELECTRICITY
DIVISION OF ELECTRICAL ENGINEERING

DRAFTSMAN P.R.S./ B.T.G.	CHIEF DRAFTSMAN ROBERT CARTER	ENGINEER P.R.S./ B.T.G.
SUPERVISING ENGINEER	ELEC. DESIGN ENGR.	

DWG. NO. 04-013

SCALE: 1" = 30'
DATE: February 11, 2005

DRAWN BY: B.T.G.
CHECKED BY: O.L.

REVISIONS	
NAME	DATE

△ Revised sheet 9/9/05

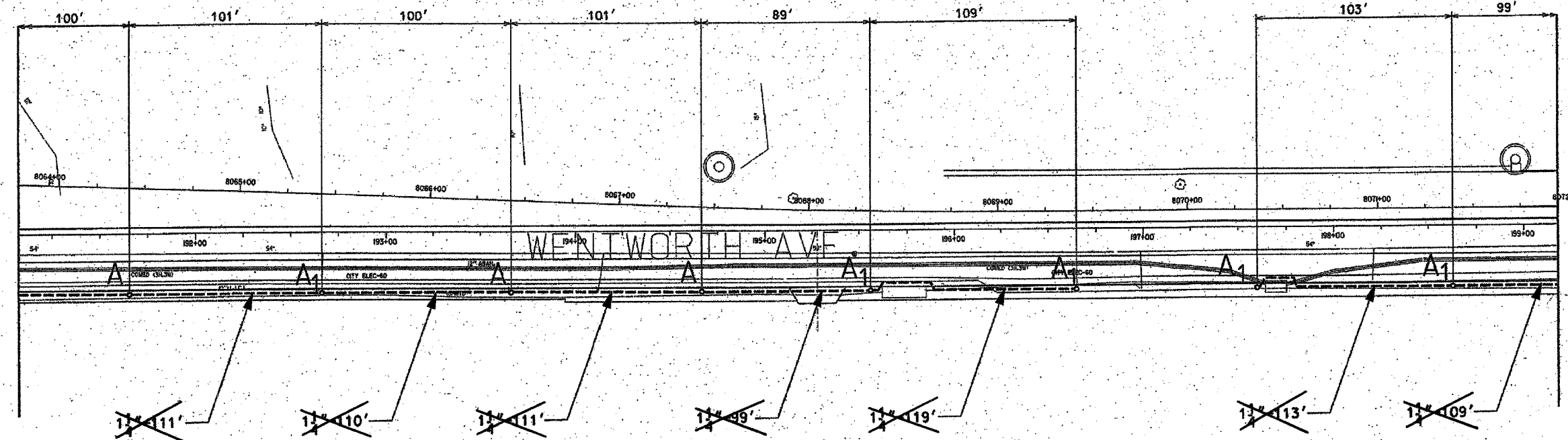
62807



NOTE: CONTRACTOR IS TO CONTACT ALL UTILITY COMPANIES TO VERIFY EXACT LOCATION OF UNDERGROUND UTILITIES PRIOR TO START OF CONSTRUCTION WORK. MOVE FOUNDATIONS AND CONDUIT RUNS ACCORDINGLY.

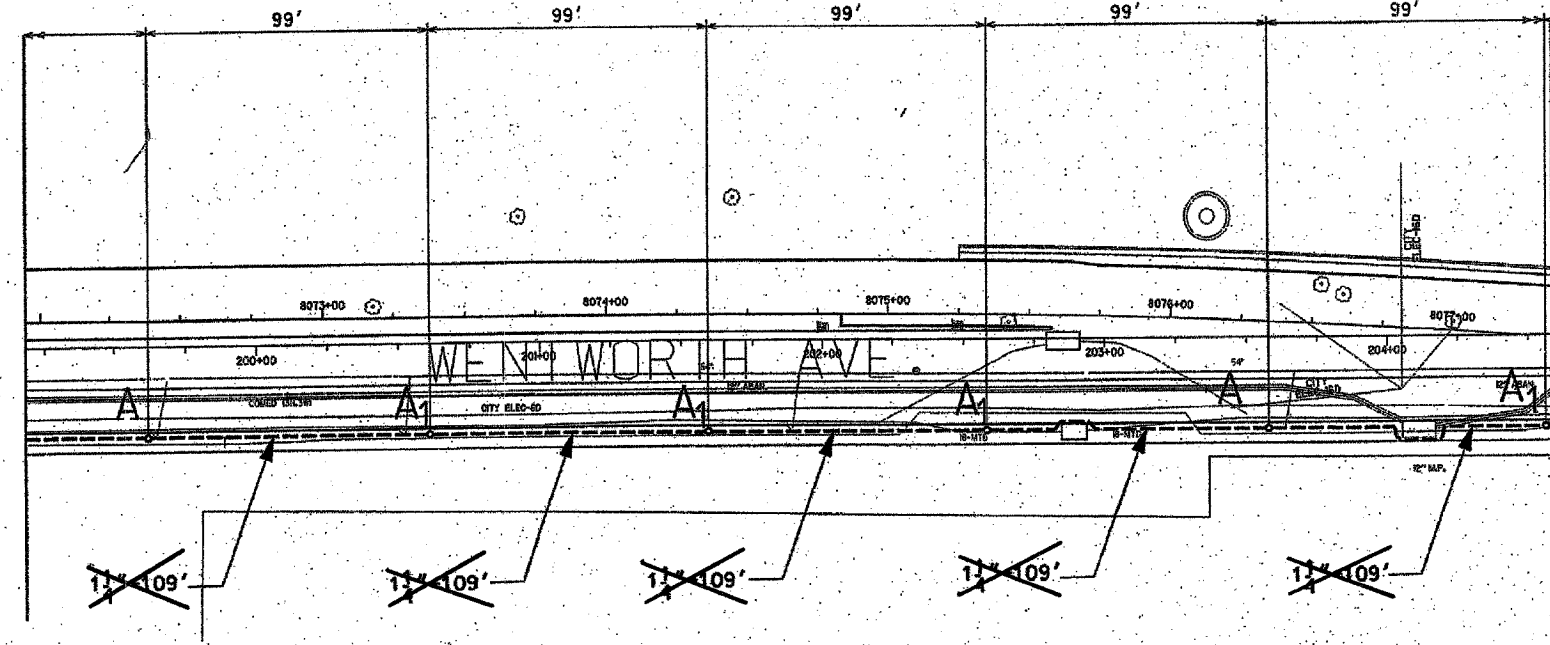
F. A. RITE	SECTION	COUNTY	TOTAL SHEETS	SHEET NO.
90/94	*	COOK	37	25
STA. 191+05	TO STA. 204+00			
FED. ROAD DIST. NO. 1	ILLINOIS	FED AID PROJECTS		
* 2004-062L				

MATCH LINE
STATION 191+05
SEE SHEET 04-013



MATCH LINE
STATION 199+15

MATCH LINE
STATION 199+15



MATCH LINE
STATION 204+60
SEE SHEET 04-015

NOTES: CONTRACTOR IS TO ~~INSTALL UNDERGROUND CONDUIT AND PULL ROPE BETWEEN FOUNDATIONS AS WELL AS~~ PERFORM THE FOLLOWING WORK ITEMS ACCORDING TO BUREAU OF ELECTRICITY SPECIFICATIONS:

"A" - INSTALL 20" x 5" FOUNDATION, 10" B.C., 1" ANCHOR RODS AS PER DRAWING NO. 565, FLUSH IN CONCRETE SIDEWALK, 2' OFF FACE OF CURB, UNLESS NOTED OTHERWISE.

"A1" - INSTALL 20" x 5" OFFSET FOUNDATION, 10" B.C., 1" ANCHOR RODS SIMILAR AS PER DRAWING NO. 937, 2' OFF FACE OF CURB, UNLESS NOTED OTHERWISE. BUILD FOUNDATION FLUSH WITH SIDEWALK.

"B" - INSTALL 30" HANDBOLE AS PER DRAWING NO. 867 WITH 24" FRAME AND COVER.

FOR BIDDING AND CONSTRUCTION
SEE GENERAL NOTES 26 AND 27
ON SHEET 2

~~1" DIRECT BORED CONDUIT SCHEDULE #80 AS PER 1907 ARTICLE 810.03~~
CONCRETE FOUNDATION - 5' x 20", 10" B.C., 1" ANCHOR RODS
OFFSET CONCRETE FOUNDATION - 5' x 20", 10" B.C., 1" ANCHOR RODS

FOR INSTALLATION PLAN SEE SHEET 04-023
FOR REMOVAL PLAN SEE SHEET 04-029

CITY OF CHICAGO			
DEPT. OF STREETS AND SANITATION			
BUREAU OF ELECTRICITY			
OFFICE OF ELECTRICAL ENGINEERING			
DRAWN BY:	CHIEF ENGINEER:	ENGINEER:	
P.R.S./B.T.G.	ROBERT CARTER	P.R.S./B.T.G.	
SUPERVISING ENGINEER:	ELEC. DESIGN ENGR.		
ENGINEER OF ELECTRICITY:			DWG. NO.
GEN'L. SUPT. OF ELECTRICITY:			04-014
DEPUTY COMMISSIONER:			
SIZE: 22" 36"	SCALE: 1"=30'	DATE: 1/20/04	

ILLINOIS DEPARTMENT OF TRANSPORTATION
F.A.I. 90/94 (DAN RYAN EXPRESSWAY)
59th St. TO 47th St. (FRONTAGE ROADS)

STREET LIGHTING
UNDERGROUND CONDUIT FACILITIES

SCALE: 1" = 30'
DATE: February 11, 2005
DRAWN BY: B.T.G.
CHECKED BY: O.L.

REVISIONS	
NAME	DATE

Revised sheet 9/9/05

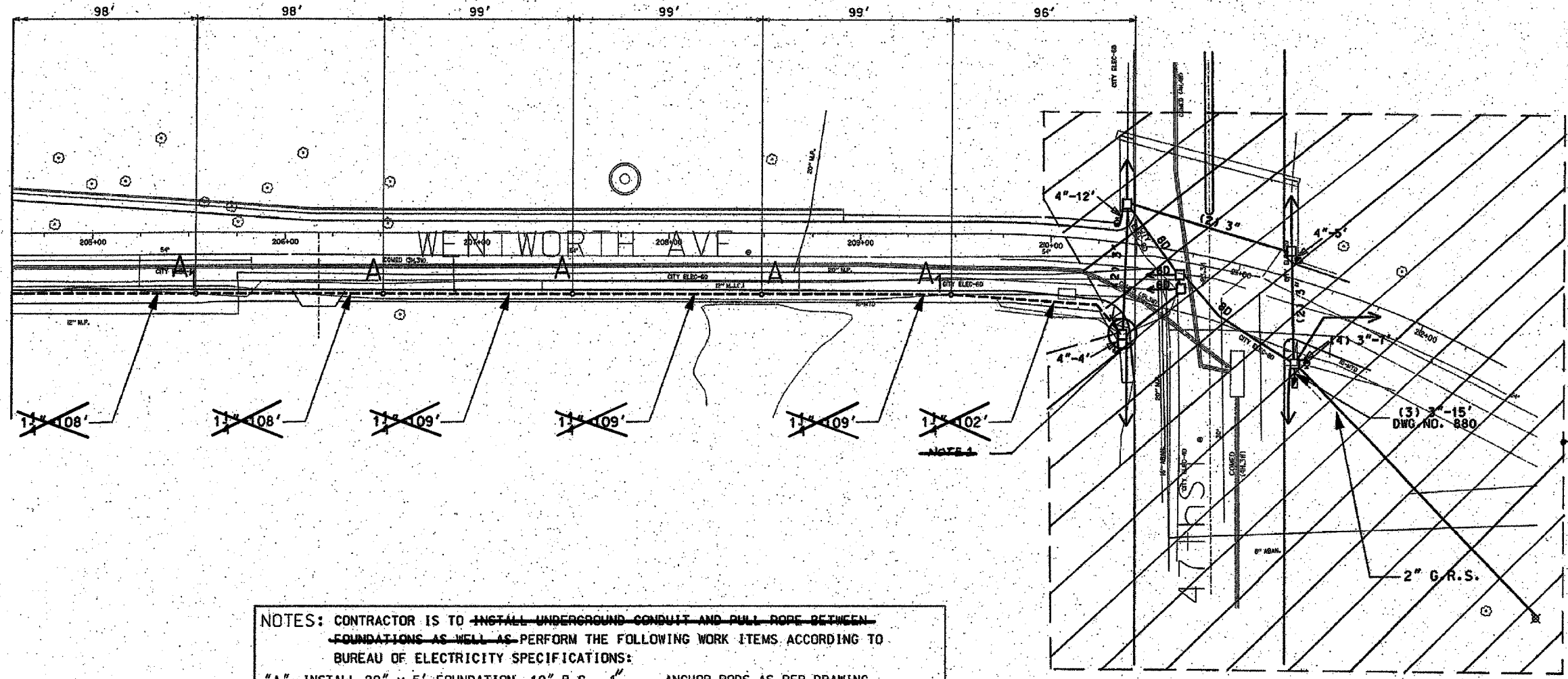
62307

F. A. RTE	SECTION	COUNTY	TOTAL SHEETS	SHEET NO.
99/34	*	COOK	37	26
STA. 204+60	TO STA. 212+05			
PER. ROAD DIST. NO. 1		ILLINOIS	FED. AID PROJECTS	
* 2004-067L				



NOTE: CONTRACTOR IS TO CONTACT ALL UTILITY COMPANIES TO VERIFY EXACT LOCATION OF UNDERGROUND UTILITIES PRIOR TO START OF CONSTRUCTION WORK. MOVE FOUNDATIONS AND CONDUIT RUNS ACCORDINGLY.

MATCH LINE
STATION 204+60
SEE SHEET 04-014



NOT INCLUDED IN THIS CONTRACT

NOTES: CONTRACTOR IS TO ~~INSTALL UNDERGROUND CONDUIT AND PULL ROPE BETWEEN FOUNDATIONS AS WELL AS~~ PERFORM THE FOLLOWING WORK ITEMS ACCORDING TO BUREAU OF ELECTRICITY SPECIFICATIONS:
 "A" - INSTALL 20" x 5' FOUNDATION, 10" B.C., 1" ANCHOR RODS AS PER DRAWING NO. 565, FLUSH IN CONCRETE SIDEWALK, 2' OFF FACE OF CURB, UNLESS NOTED OTHERWISE.
 "A₁" - INSTALL 20" x 5' OFFSET FOUNDATION, 10" B.C., 1" ANCHOR RODS SIMILAR AS PER DRAWING NO. 937; 2' OFF FACE OF CURB, UNLESS NOTED OTHERWISE. BUILD FOUNDATION FLUSH WITH SIDEWALK.
 "B" - INSTALL 30" HANDHOLE AS PER DRAWING NO. 867 WITH 24" FRAME AND COVER.

~~1 1/2" DIRECT BORED CONDUIT SCHEDULE #80 AS PER IDOT ARTICLE 946-02~~
 CONCRETE FOUNDATION - 5' x 20", 10" B.C., 1" ANCHOR RODS
 OFFSET CONCRETE FOUNDATION - 5' x 20", 10" B.C., 1" ANCHOR RODS

~~FOR INSTALLATION PLAN SEE SHEET 04-023~~
~~FOR REMOVAL PLAN SEE SHEET 04-029~~

FOR BIDDING AND CONSTRUCTION
 SEE GENERAL NOTES 26 AND 27
 ON SHEET 2.

NOTES:
 1. ~~ROUTE PROPOSED CONDUIT ROUTE~~
 EXISTING MAW-HOLE AS SHOWN. DRESS THE EXISTING MAW-HOLE AND INSTALL PROPOSED CONDUIT THROUGH MAW-HOLE WALL. SEE DRAWING 30E-2 FOR DETAILS.

CITY OF CHICAGO
 DEPT. OF STREETS AND SANITATION
 BUREAU OF ELECTRICITY
 DIVISION OF ELECTRICAL ENGINEERING

DRAFTSMAN P.R.S./B.T.G.	CHIEF DRAFTSMAN ELEC. DESIGN ENGR. ROBERT CARTER	ENGINEER P.R.S./B.T.G.
SUPERVISING ENGINEER		DWG. NO. 04-015
ENGINEER OF ELECTRICITY		
GEN'L SUPT. OF ELECTRICITY		
DEPUTY COMMISSIONER		
SIZE: 22" x 36"	SCALE: 1"=30'	DATE: 1/20/04
ILLINOIS DEPARTMENT OF TRANSPORTATION F.A.I. 90/94 (DAN RYAN EXPRESSWAY) 57th St. TO 47th St. (FRONTAGE ROADS)		
STREET LIGHTING UNDERGROUND CONDUIT FACILITIES		
SCALE: 1" = 30'		DRAWN BY: B.T.G.
DATE: February 11, 2005		CHECKED BY: O.L.

REVISIONS	
NAME	DATE

Revised sheet 9/9/05