

62807

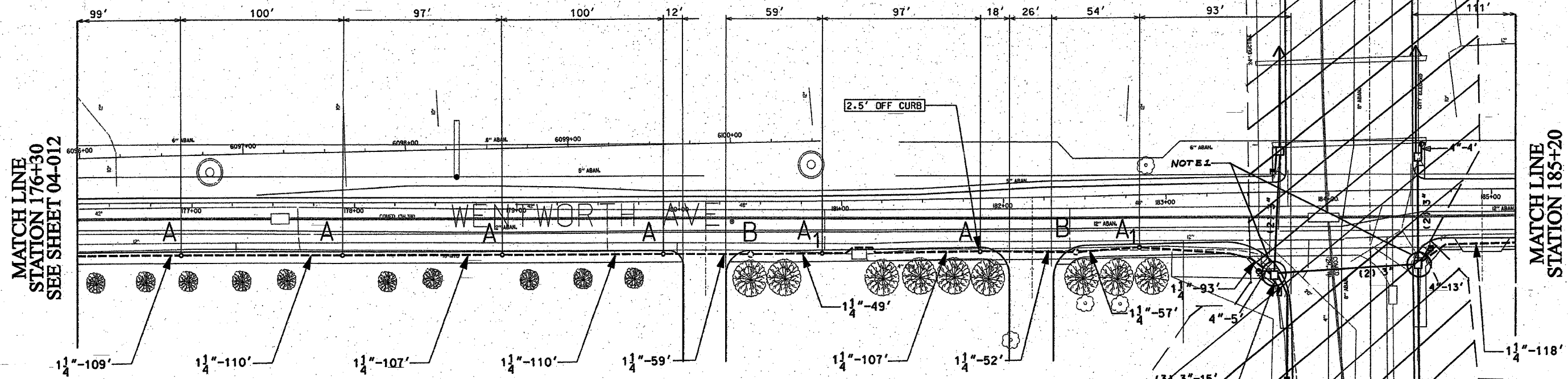
F. A. RYE	SECTION	COUNTY	TOTAL SHEETS	SHEET NO.
90/94	*	COOK	37	24
STA. 176+00		TO STA. 191+00		
FED. ROAD DIST. NO. 1	ILLINOIS	FED AID PROJECTS		

NOTE: CONTRACTOR IS TO CONTACT ALL UTILITY COMPANIES TO VERIFY EXACT LOCATION OF UNDERGROUND UTILITIES PRIOR TO START OF CONSTRUCTION WORK. MOVE FOUNDATIONS AND CONDUIT RUNS ACCORDINGLY.

FOR INSTALLATION PLAN SEE SHEETS 04-022, 04-023  
FOR REMOVAL PLAN SEE SHEET 04-028, 04-029



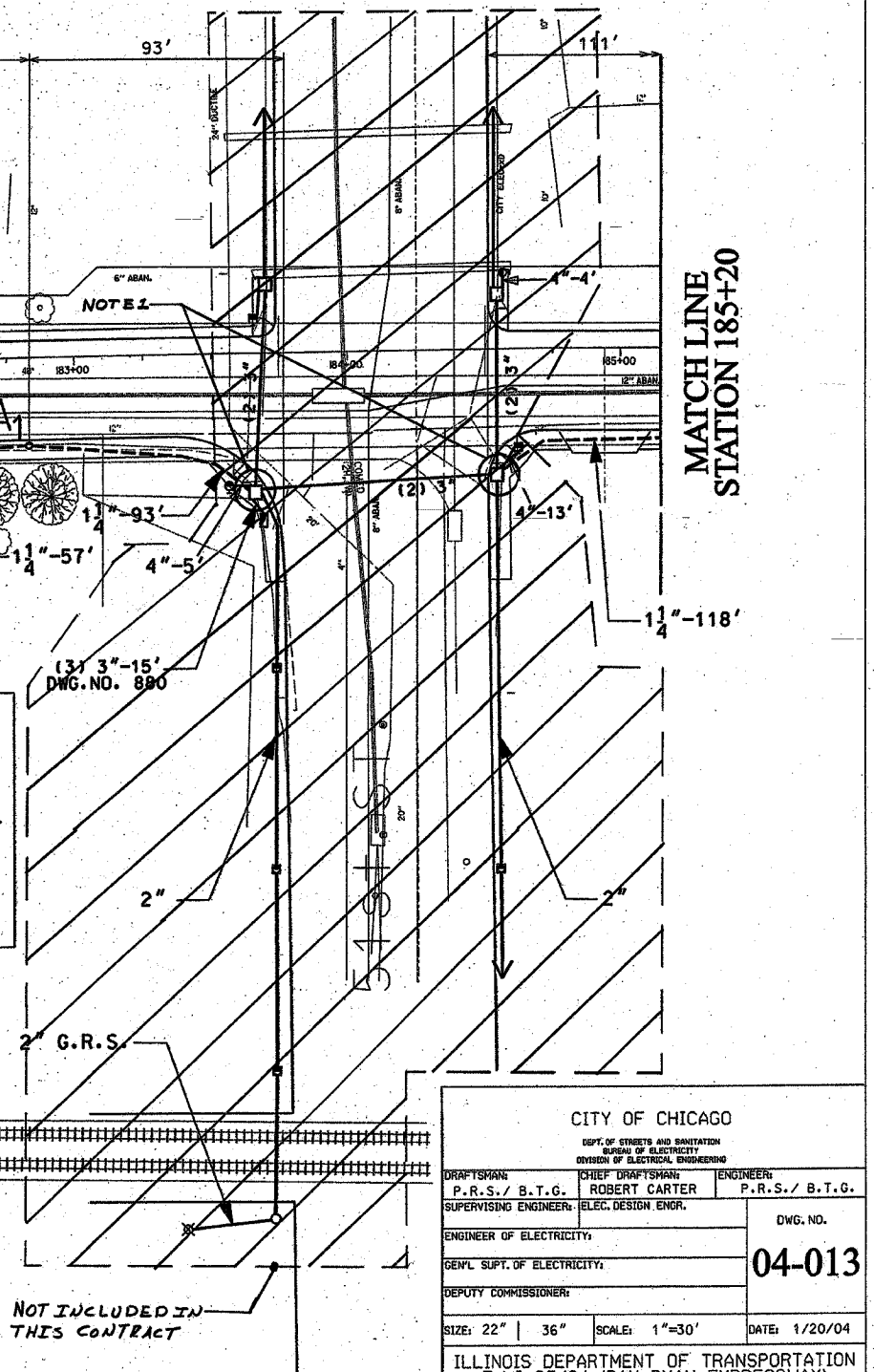
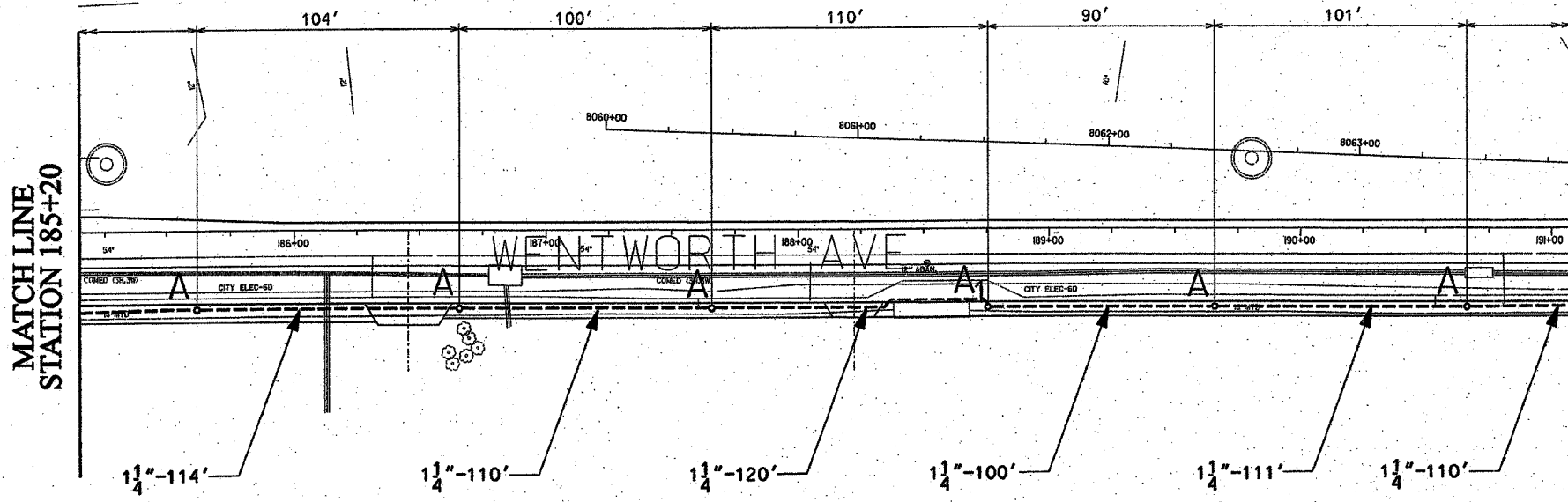
\* 2004-068L



1 1/4" DIRECT BORED CONDUIT SCHEDULE #80 AS PER IDOT ARTICLE 810.03  
HAND HOLE - 30" x 36" WITH 24" FRAME AND COVER  
CONCRETE FOUNDATION - 5' x 20", 10" B.C., 1" ANCHOR RODS  
OFFSET CONCRETE FOUNDATION - 5' x 20", 10" B.C., 1" ANCHOR RODS

NOTES: CONTRACTOR IS TO INSTALL UNDERGROUND CONDUIT AND PULL ROPE BETWEEN FOUNDATIONS AS WELL AS PERFORM THE FOLLOWING WORK ITEMS ACCORDING TO BUREAU OF ELECTRICITY SPECIFICATIONS:  
"A" - INSTALL 20" x 5' FOUNDATION, 10" B.C., 1" ANCHOR RODS AS PER DRAWING NO. 565. FLUSH IN CONCRETE SIDEWALK, 2' OFF FACE OF CURB, UNLESS NOTED OTHERWISE.  
"A1" - INSTALL 20" x 5' OFFSET FOUNDATION, 10" B.C., 1" ANCHOR RODS SIMILAR AS PER DRAWING NO. 937, 2' OFF FACE OF CURB, UNLESS NOTED OTHERWISE. BUILD FOUNDATION FLUSH WITH SIDEWALK.  
"B" - INSTALL 30" HANDHOLE AS PER DRAWING NO. 867 WITH 24" FRAME AND COVER.

NOTES:  
1. ROUTE PROPOSED CONDUIT RUN TO EXISTING MANHOLE AS SHOWN. DRILL EXISTING MANHOLE AND INSTALL PROPOSED CONDUIT THROUGH MANHOLE WALL. SEE DRAWING BOE-2 FOR DETAILS.



CITY OF CHICAGO		
DEPT. OF STREETS AND SANITATION		
BUREAU OF ELECTRICITY		
DIVISION OF ELECTRICAL ENGINEERING		
DRAFTSMAN:	CHIEF DRAFTSMAN:	ENGINEER:
P. R. S. / B. T. G.	ROBERT CARTER	P. R. S. / B. T. G.
SUPERVISING ENGINEER:	ELEC. DESIGN ENGR.	
ENGINEER OF ELECTRICITY:		DWG. NO.
GEN'L SUPT. OF ELECTRICITY:		04-013
DEPUTY COMMISSIONER:		
SIZE: 22"   36"	SCALE: 1"=30'	DATE: 1/20/04

ILLINOIS DEPARTMENT OF TRANSPORTATION  
F.A.I. 90/94 (DAN RYAN EXPRESSWAY)  
59th St. TO 47th St. (FRONTAGE ROADS)

STREET LIGHTING  
UNDERGROUND CONDUIT FACILITIES

SCALE: 1" = 30'  
DATE: February 11, 2005  
DRAWN BY: B.T.G.  
CHECKED BY: O.L.

REVISIONS	
NAME	DATE

NOT INCLUDED IN THIS CONTRACT