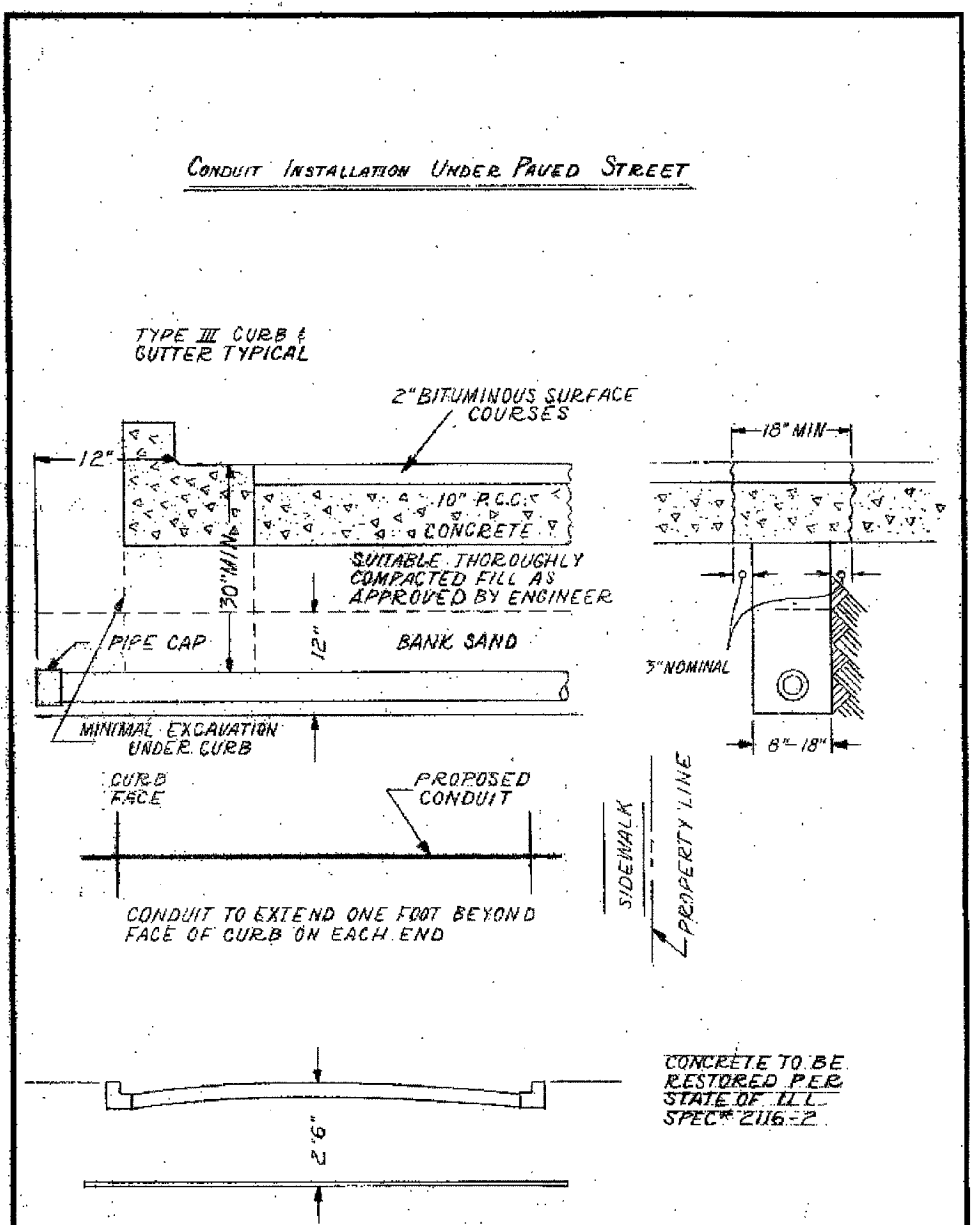


F.A.I. RTE.	SECTION	COUNTY	TOTAL SHEETS	SHEET NO.
90/94	2004-068L	COOK	37	31
STA.	TO STA.			
FED. ROAD DIST. NO. 1		ILLINOIS FED. AID PROJECT		

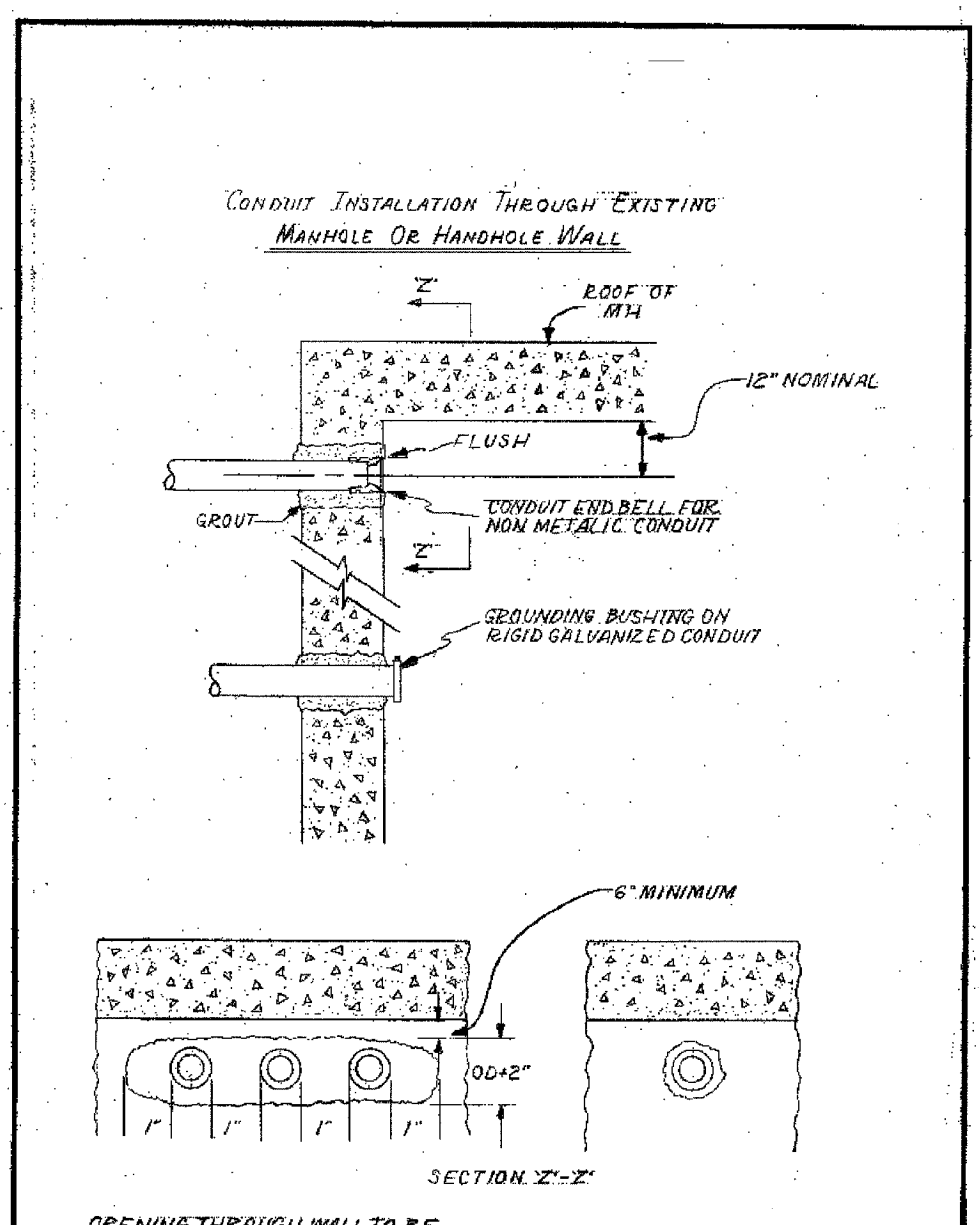
62807



**INSTALLATION METHOD OF  
INSTALLING CONDUIT UNDER  
PAVED ROADWAY**

**CITY OF CHICAGO**  
DEPT. OF STREETS AND SANITATION  
BUREAU OF ELECTRICITY  
DIVISION OF ELECTRICAL ENGINEERING

DRAWN A.M. JOHNSON	CHECKED R. SYCOWSKI	FORWARDED R.L. MARTIN
 ENGINEER OF ELECTRICITY		 DIV. NO.
 8 1/2" X 14"		813



OPENING THROUGH WALL TO BE KEPT TO MINIMUM SIZE TO ADMIT CONDUIT AND SUFFICIENT GROUT TO ASSURE SEALING WALL.

**INSTALLATION METHOD OF  
INSTALLING CONDUIT THRU  
MANHOLE WALL**

**CITY OF CHICAGO**  
DEPT. OF STREETS AND SANITATION  
BUREAU OF ELECTRICITY  
DIVISION OF ELECTRICAL ENGINEERING

DRAWN A.M. JOHNSON	CHECKED R. SYCOWSKI	FORWARDED R.L. MARTIN
 ENGINEER OF ELECTRICITY		 DIV. NO.
 8 1/2" X 14"		814

REVISIONS	
NAME	DATE

BOE-2

ILLINOIS DEPARTMENT OF TRANSPORTATION  
F.A.I. 90/94 (DAN RYAN EXPRESSWAY)  
59th ST TO 47th ST (FRONTAGE ROAD)  
CITY OF CHICAGO LIGHTING CONDUIT & FOUNDATIONS  
WENTWORTH AVENUE

BOE STANDARD DETAILS

SCALE: NONE      DRAWN BY: HAR  
DATE: February 11, 2005      CHECKED BY: WDS

V:\Tech\ITV\40468\40468-LE\94\14-CHT\9\CONTRACT\981\9\BOE\06130022A.DWG 02/10/2005 09:42:38 AM