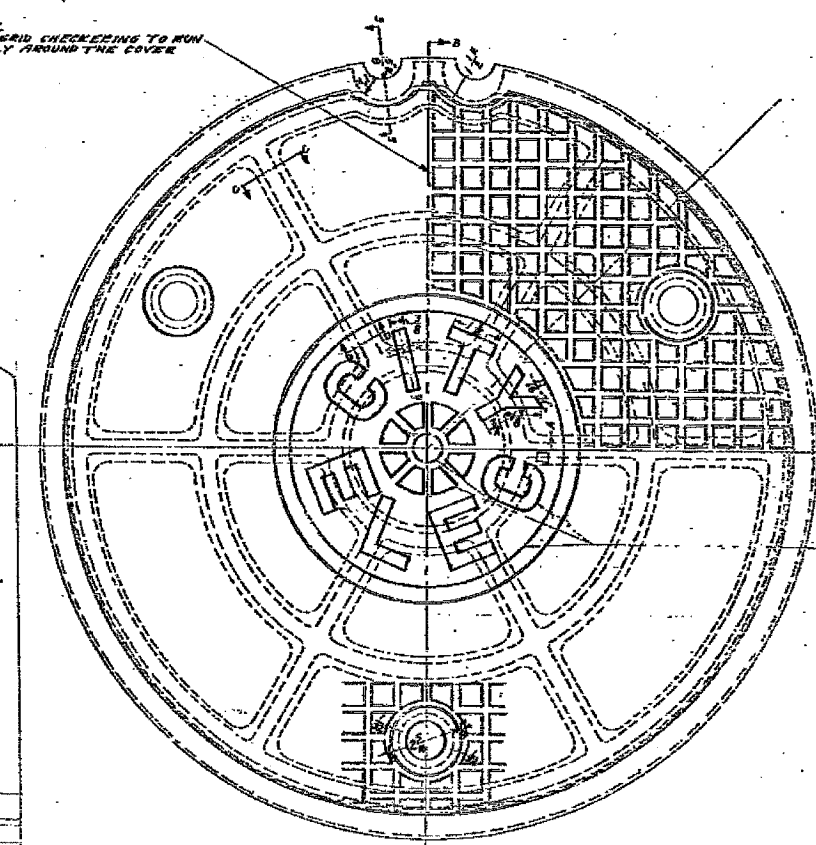
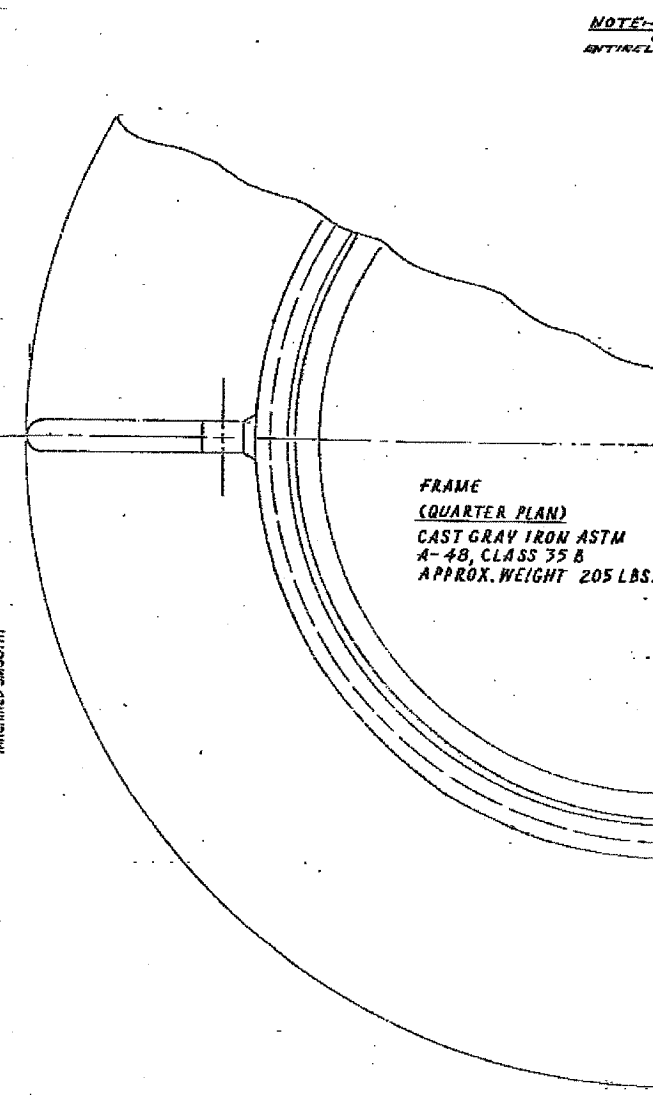
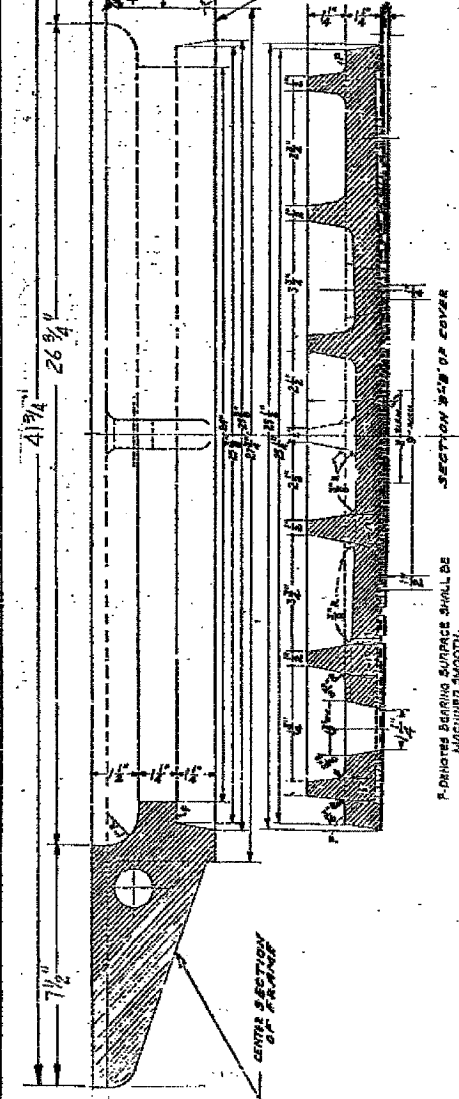
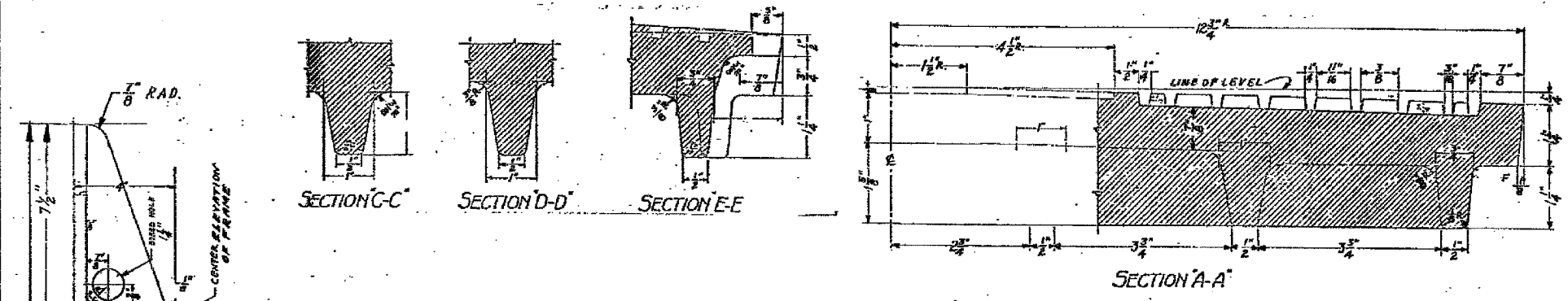


F.A.I. RTE.	SECTION	COUNTY	TOTAL SHEETS	SHEET NO.
90/94	2004-06BL	COOK	37	35
STA.	TO STA.			
FED. ROAD DIST. NO. 1 ILLINOIS FED. AID PROJECT				
62807				



NOTE - THE TOP SURFACE OF THE 3 CIRCLES AND ALL OF THE LETTERS TO BE RAISED 1/8" ABOVE THE SURFACE WITHIN THE 3" DIAMETER WITH 7/8" DRAFT ANGLE.

COMMODITY CODE  
FRAME  
COVER - 02 4574-5040

SUPERSEDES DWG # 10797  
DATED 2-10-35

**24" DIA. CIRCULAR MANHOLE  
FRAME & COVER WITH 4 1/2" O.D.  
FRAME**

CITY OF CHICAGO  
DEPT. OF STREET & SANITATION  
BUREAU OF ELECTRICAL ENGINEERING  
DIVISION OF ELECTRICAL ENGINEERING

DESIGNED BY: A. JOHNSON  
SUPERVISING ENGINEER: C. RESPINO  
ENGINEER: M. DE BARTOLO

ENGINEER OF ELECTRICALITY: 872  
DATE: 4-24-92

**CTE ENGINEERS**  
CONSER TOWNSEND ENVIRONMENTAL ENGINEERS, INC.  
303 EAST WACKER DRIVE, SUITE 600  
CHICAGO, ILLINOIS 60601-5262, PHONE: (312) 938-0300

REVISIONS	
NAME	DATE

ILLINOIS DEPARTMENT OF TRANSPORTATION  
F.A.I. 90/94 (DAN RYAN EXPRESSWAY)  
59th ST TO 47th ST (FRONTAGE ROAD)  
CITY OF CHICAGO LIGHTING CONDUIT & FOUNDATIONS  
WENTWORTH AVENUE

**BOE STANDARD DETAILS**

SCALE: NONE  
DATE: February 11, 2005  
DRAWN BY: HAR  
CHECKED BY: WDS

02/02/2005 09:09:56 AM \\tech\nt\p40468\p40468\dwg\14-ent\9151\contract\9151\boe050130062a.dwg