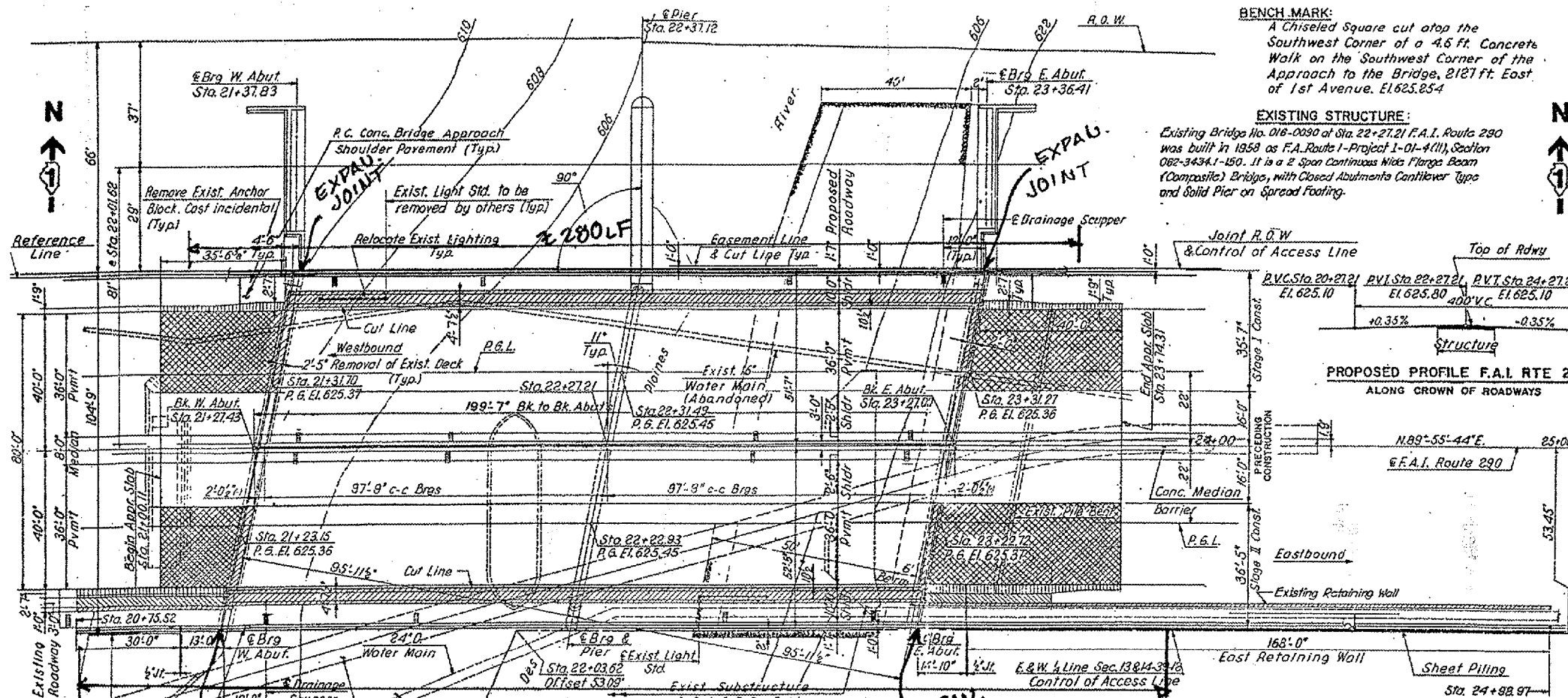


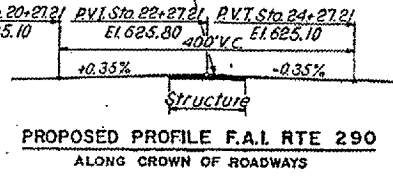
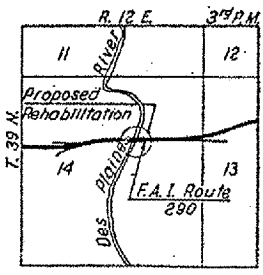
ROUTE Various	SECTION 2004-089 I	COUNTY COOK	TOTAL SHEETS 27	SHEET NUMBER 15
------------------	-----------------------	----------------	--------------------	--------------------

CONTRACT 62833



BENCH MARK:
A Chiseled Square cut atop the Southwest Corner of a 4.6 Ft. Concrete Walk on the Southwest Corner of the Approach to the Bridge, 2127 ft. East of 1st Avenue, El. 625.254

EXISTING STRUCTURE:
Existing Bridge No. 016-0090 of Sta. 22+27.21 F.A.I. Route 290 was built in 1959 as F.A. Route 1-Project 1-01-4(11), Section 062-3434.1-150. It is a 2 Span Continuous Wides Flange Beam (Composite) Bridge, with Closed Abutments Cantilever Type and Solid Pier on Spread Footing.



NOTES

DESIGN LOADING:
HS20-44 & All. No allowance for future Wearing Surface

DESIGN STRESSES:
(Exist. Construction)
F_s = 18,000 p.s.i. Exist. A7 Structural Steel
F_s = 20,000 p.s.i. Exist. Reinforcing Steel
F_c = 1,200 p.s.i. (Superstructure)

(New Construction)
F_s = 20,000 p.s.i. New M183 Structural Steel
F_s = 24,000 p.s.i. New Reinf. Steel Allowable
F_c = 1,400 p.s.i. (Superstructure) Stress Design

DESIGN SPECIFICATIONS:
AASHTO 1977 and Interim Specifications 1978, 1979, 1980, 1981, 1982 and 1983.

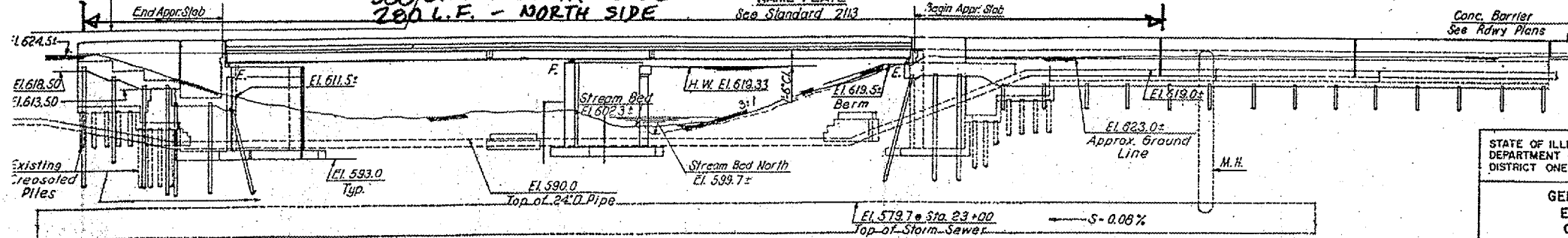
Station 22+27.21
Rebuilt by
State of Illinois
F.A.I. Rt 290 - Sec. 1983-151-R
F.A. Project 1R-290-A (56)
Loading HS20 & AH
Str. No. 016-0090

WATERWAY INFORMATION

Drainage Area - 473.40 Low Grade Elev - 621.17 • Sta 9+50

Flood	Freq. Yr.	Opening Sq. Ft.	Head - Ft.		Headwater El.	
			Exist.	Prop.	Exist.	Prop.
Design	50	15770	1975	1975	618.0	618.0
Base	100	6265	2067	2067	618.48	618.48
Overlapping	300					
Max. Calc.	500	7250	2230	2230	619.33	619.33

BRIDGE FENCE RAILING
300 L.F. - SOUTH SIDE
280 L.F. - NORTH SIDE



ELEVATION Legend:

- Indicates Conc. Removal
- Indicates Approach Slab Removal and Replacement
- Indicates Curb & Gutter Removal
- Indicates Structural Sidewalk Removal

STATE OF ILLINOIS
DEPARTMENT OF TRANSPORTATION
DISTRICT ONE

EISENHOWER EXPRESSWAY
F.A.I. ROUTE 290
REHABILITATION PROJECT

GENERAL PLAN & ELEVATION
EISENHOWER EXPRESSWAY
OVER DES PLAINES RIVER

COOK COUNTY
MEDGONOUGH ENGINEERING INC.
ENGINEERING CONSULTANTS

SEC. 1983-151
DESIGNED BY: B.S.
CHECKED BY:
DRAWN BY: B.S.

LOCATION NO. 7