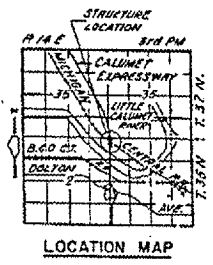
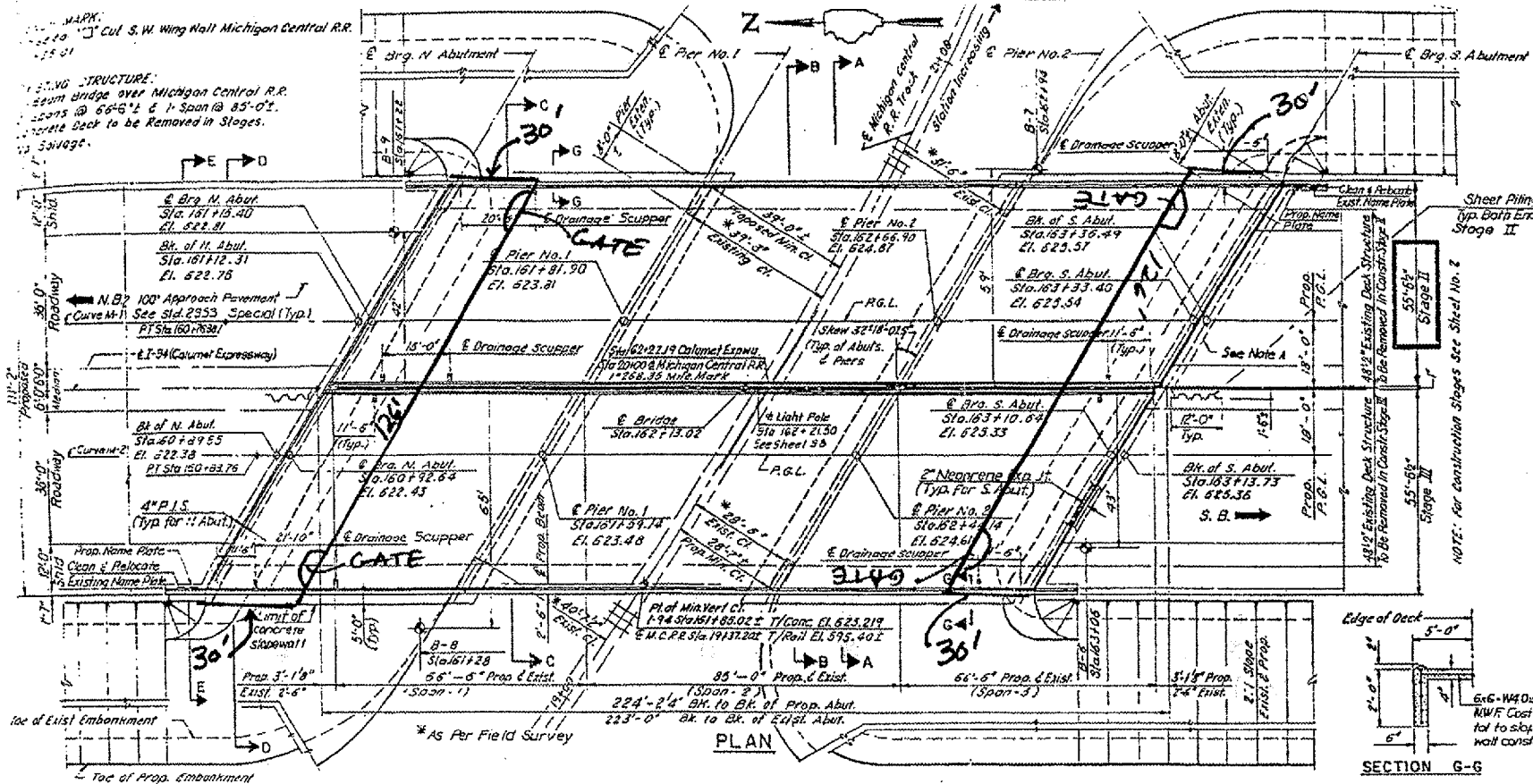


ROUTE	SECTION	COUNTY	TOTAL SHEETS	SHEET NUMBER
Various	2004-089I	COOK	27	16

CONTRACT 62833



DESIGN SPECIFICATIONS:
 A.A.S.H.T.O. 1983 Standard Specifications for Highway, Bridges and 1984 thru 1988 Interims.
 Standard Specifications for Roads and Bridge Construction State of Illinois dated July 1, 1988.
 1983 Code Specifications for Seismic Design of Highway Bridges with 1985 & 1988 Interim Specifications.

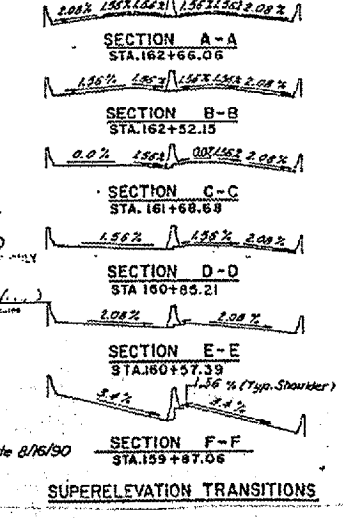
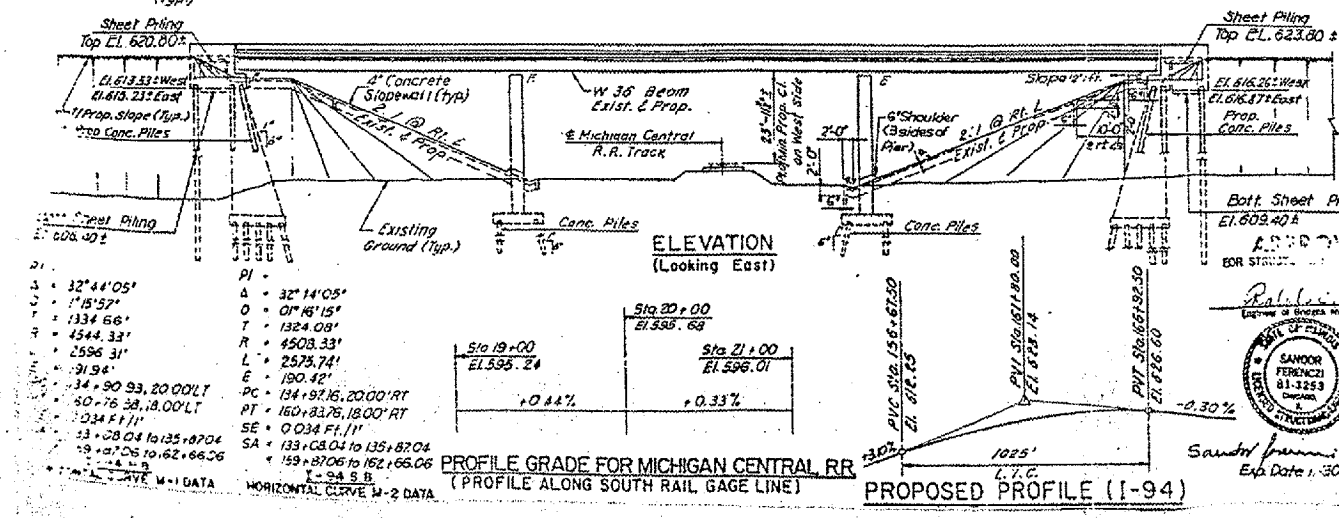
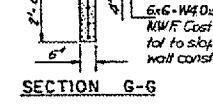
DESIGN CRITERIA
 Live Load: HS 20 & ALT.
 Allow 25 PSF for future wearing surface.

DESIGN STRESSES:
 Existing Structural Steel
 $f_s = 18,000$ psi, A7
 Proposed Structural Steel
 $f_s = 20,000$ psi, (A193 Steel)
 Reinforced Concrete
 $f_c = 4500$ psi - Superstructure
 $f_c = 4000$ psi - Substructure

REINFORCEMENT:
 $f_y = 60,000$ psi - Superstructure
 $f_y = 24,000$ psi - Substructure

⊕ Indicates Boring Location

Note:
 A. Limits of Porous Granular Embankment (Typ. both Abutments).
 Floor at 45°.



PROFILE GRADE FOR MICHIGAN CENTRAL RR (PROFILE ALONG SOUTH RAIL GAGE LINE)

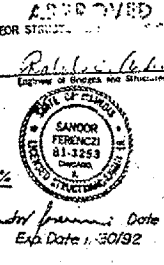
Station	Elevation
Sta 19+00	EL. 595.24
Sta 20+00	EL. 595.68
Sta 21+00	EL. 596.01

PROPOSED PROFILE (I-94)

Station	Elevation
Sta 19+00	EL. 595.24
Sta 20+00	EL. 595.68
Sta 21+00	EL. 596.01

HORIZONTAL CURVE DATA

PI	32° 44' 05"
Δ	1° 15' 52"
T	1334.66'
R	4503.33'
L	2596.31'
E	190.42'
PC	134+92.15, 2000' RT
PT	150+83.76, 1800' RT
SE	0.034 FI 11'
SA	133+08.04 to 135+87.04
EA	159+87.06 to 162+66.06
I	24 S.B.



STATION 162+13.02
 RE-BUILT BY
 STATE OF ILLINOIS
 F.A.I. RT. 94 SEC.
 F.A. PROJ. FIR-94-3(305)
 LOADINGS HS 20 & ALT.
 STR. No. 015-0157

NAME PLATE
 See Standard 2113

STAGE II - N.B. MAINLINE CONSTRUCTION

STATE OF ILLINOIS
 DEPARTMENT OF TRANSPORTATION

PLAN AND ELEVATION
 F.A.I.-94 OVER MICHIGAN CENTRAL R.R.
 COOK COUNTY
 SN. 016-0157
 DRAWN BY KC & ING
 CHECKED BY L.M.

STA. 162+13.02
 STA. 159+87.06

SCALE
 8/11 AUG. 1990

LOCATION NO. 8