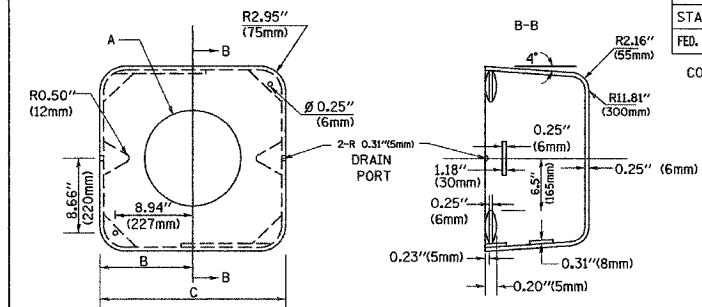


|                       |             |          |                  |           |
|-----------------------|-------------|----------|------------------|-----------|
| F.A.U. RTE.           | SECTION     | COUNTY   | TOTAL SHEETS     | SHEET NO. |
| 305                   | 2004-108 BR | COOK     | 72               | 33        |
| STA.                  |             | TO STA.  |                  |           |
| FED. ROAD DIST. NO. 1 |             | ILLINOIS | FED. AID PROJECT |           |

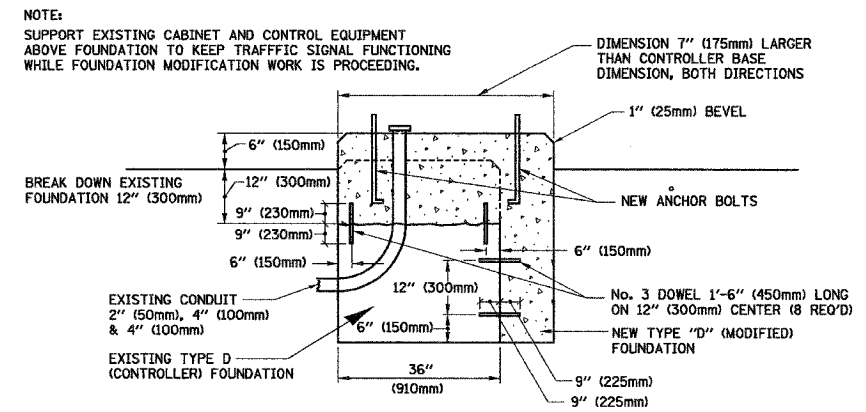
CONTRACT NO. 62853

MATERIAL:  
 - ASTM A48 CLASS 30 GREY IRON  
 - ASTM A123 HOT DIPPED GALVANIZED

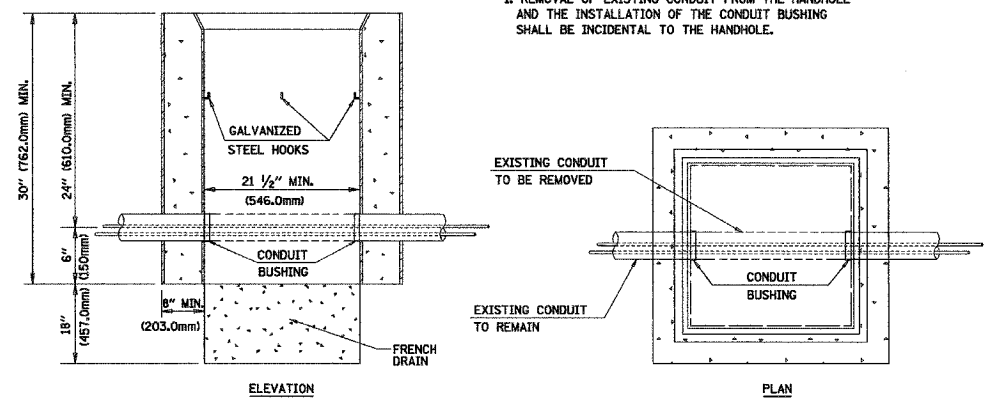


| TYPE | A                 | B              | C             | HEIGHT      | WEIGHT |
|------|-------------------|----------------|---------------|-------------|--------|
| I    | Ø 10.125" (257mm) | 9.5" (241mm)   | 19" (483mm)   | 12" (300mm) | 24kg   |
| II   | Ø 11.125" (283mm) | 10.75" (273mm) | 21.5" (546mm) | 12" (300mm) | 26kg   |

SHROUD DETAIL



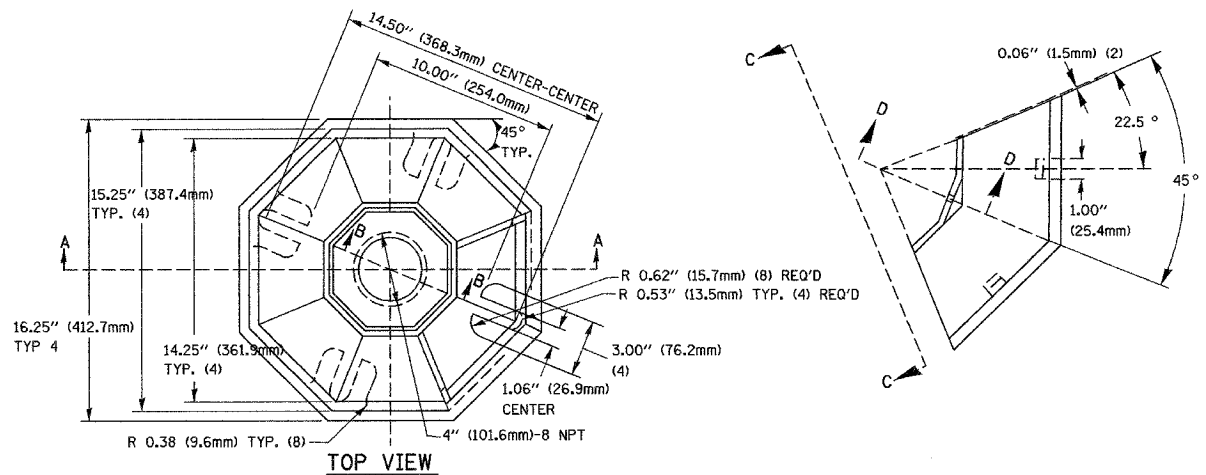
MODIFY EXISTING TYPE "D" FOUNDATION (NOT TO SCALE)



DETAIL HANDHOLE TO INTERCEPT EXISTING CONDUIT N.T.S.

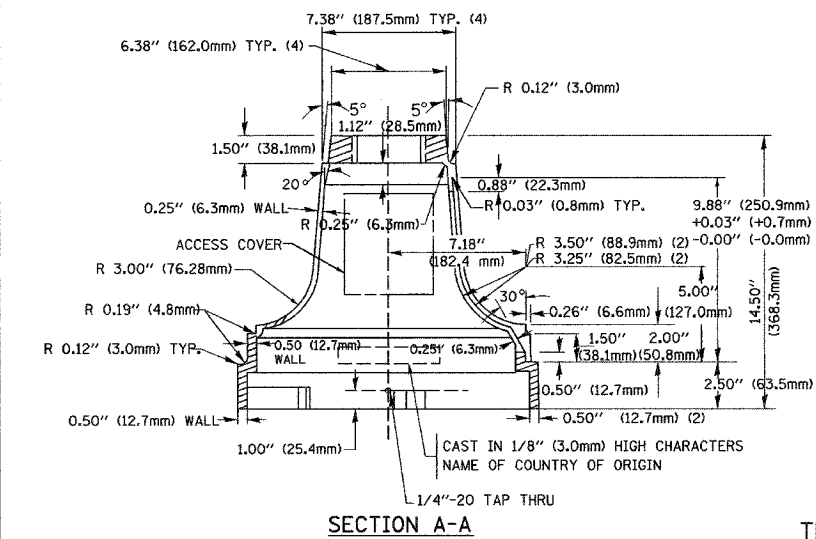
| REVISIONS |      |
|-----------|------|
| NAME      | DATE |
|           |      |
|           |      |
|           |      |
|           |      |
|           |      |

ILLINOIS DEPARTMENT OF TRANSPORTATION  
 DISTRICT 1  
 STANDARD TRAFFIC SIGNAL DESIGN DETAILS  
 SCALE: VERT. NONE  
 HORIZ. 1-01-02  
 DATE 1-01-02  
 DRAWN BY: RWP  
 DESIGNED BY: DAD  
 CHECKED BY: DAZ  
 SHEET 4 OF 4

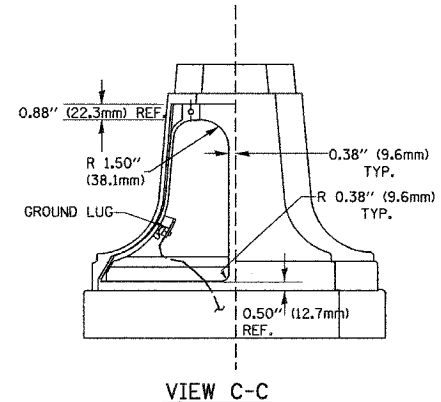


SECTION B-B

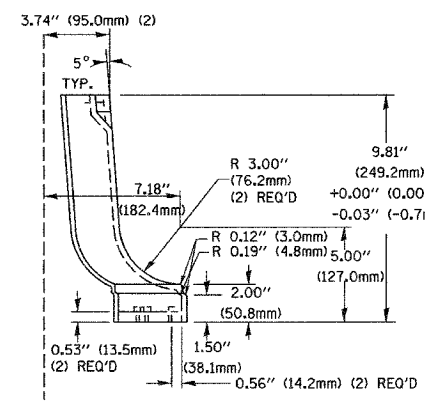
SECTION D-D



SECTION A-A



VIEW C-C

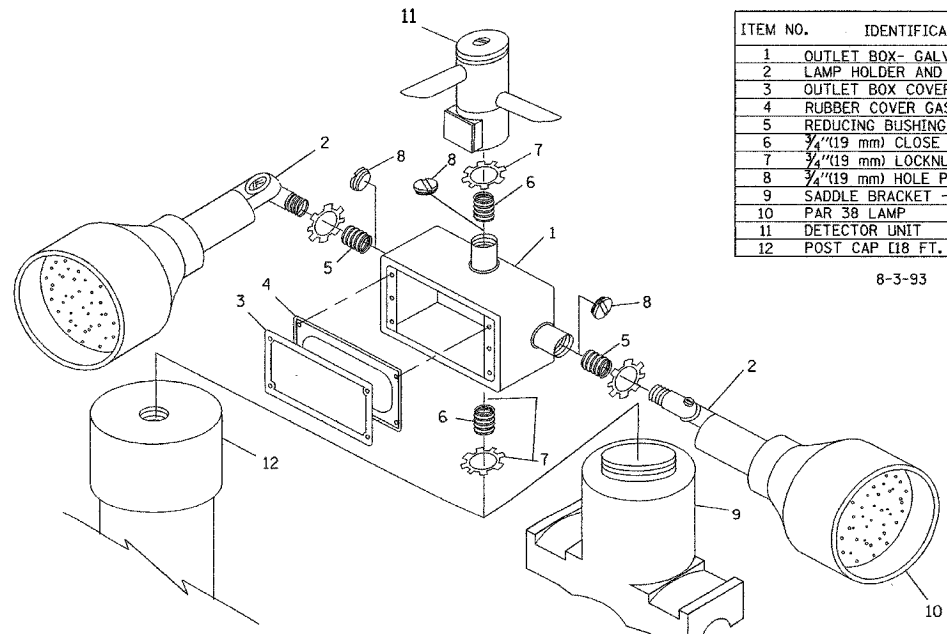


TRAFFIC SIGNAL POST - MOUNTING BASE - TYPE A

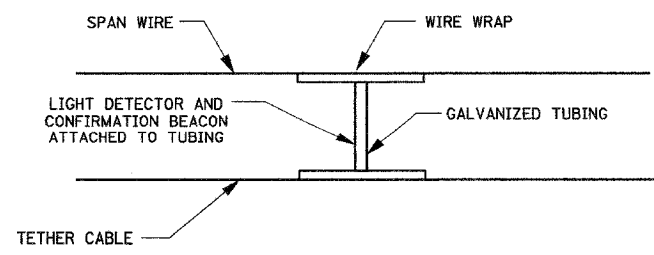
- NOTES:
- ALL ELECTRICAL ITEMS, EXCEPT ITEMS #2 AND #11 SHALL BE ALUMINUM OR GALVANIZED
  - ITEM #1- OZ/GEDNEY FSX-1-50 OR EQUIVALENT  
 ITEM #2- MULBERRY CON-O-SHADE LAMP SHIELD OR EQUIVALENT  
 ITEM #9- "BAND-IT" SADDLE BRACKET OR EQUIVALENT
  - WHEN POST MOUNTING IS SPECIFIED, ITEM #9 SHALL NOT BE REQUIRED. THE DETECTION UNIT SHALL BE MOUNTED DIRECTLY ON TOP OF THE CAP BY DRILLING AND TAPPING A 3/4" (19 mm) HOLE WITH PIPE THREADS. THE POST CAP SHALL EITHER BE SCREWED TO THE TOP OF THE POST OR A MINIMUM OF 3 TIGHTENING SCREWS SHALL BE REQUIRED ON EACH CAP.

| ITEM NO. | IDENTIFICATION                              |
|----------|---|
| 1        | OUTLET BOX- GALV. 21 CU.IN. (0.000344 CU-M) |
| 2        | LAMP HOLDER AND COVER                       |
| 3        | OUTLET BOX COVER                            |
| 4        | RUBBER COVER GASKET                         |
| 5        | REDUCING BUSHING                            |
| 6        | 3/4" (19 mm) CLOSE NIPPLE                   |
| 7        | 3/4" (19 mm) LOCKNUT                        |
| 8        | 3/4" (19 mm) HOLE PLUG                      |
| 9        | SADDLE BRACKET - GALV.                      |
| 10       | PAR 38 LAMP                                 |
| 11       | DETECTOR UNIT                               |
| 12       | POST CAP [18 FT. (5.4 m) POST MIN.]         |

8-3-93



POST CAP MOUNT  
 MAST ARM MOUNT  
 EMERGENCY VEHICLE DETECTOR WITH CONFIRMATION BEACON MOUNTING DETAIL



LIGHT DETECTOR AND CONFIRMATION BEACON MOUNTING FOR TEMPORARY TRAFFIC SIGNALS (NOT TO SCALE)

I:\projects\projects\2004\polatline\signal\plans\inc\volff\04-std4\_wolf.dgn  
 DATE-TIME: 11/11/04 10:00:00 AM  
 DGN-SPEC: 11/11/04 10:00:00 AM