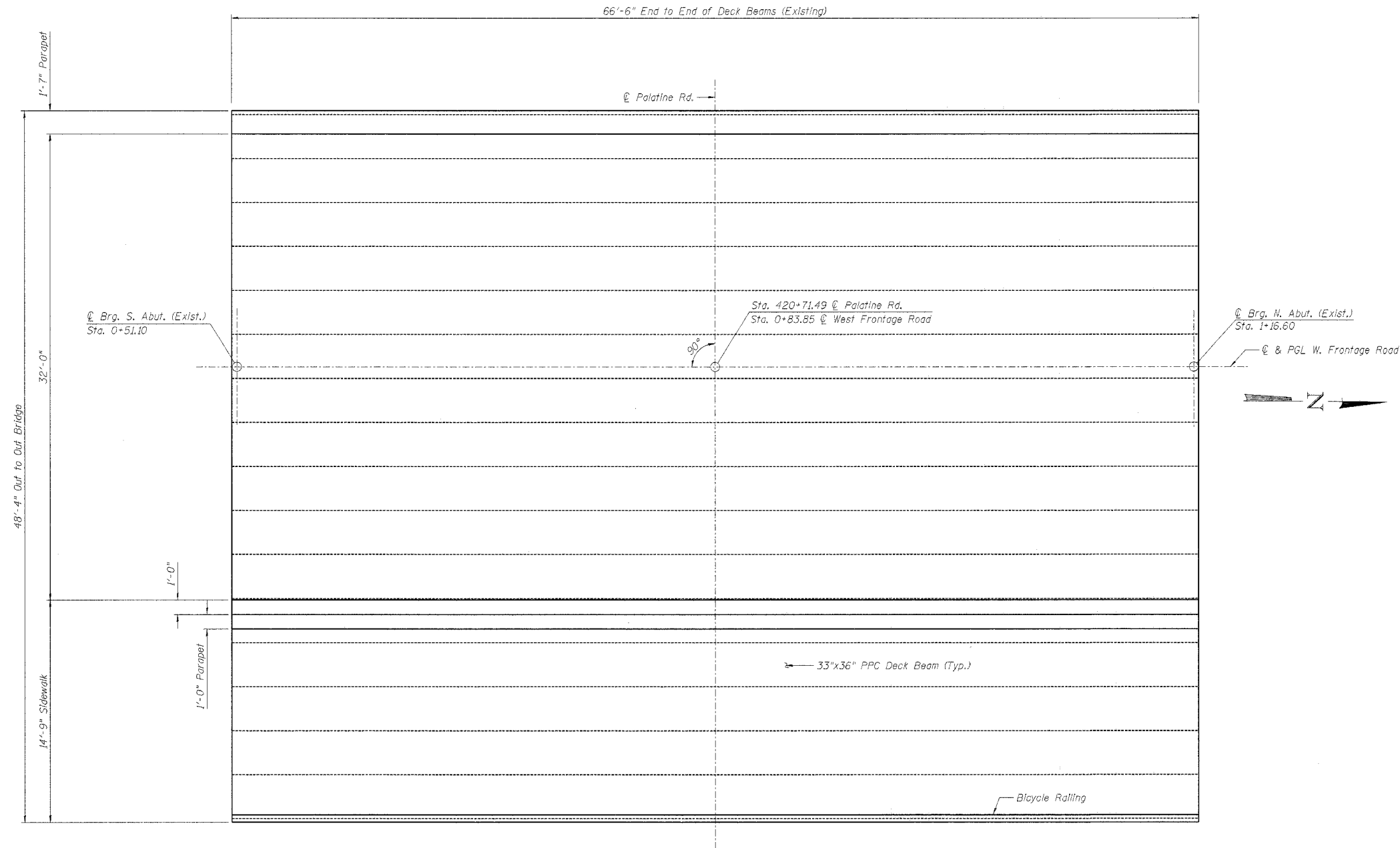


STATE OF ILLINOIS  
DEPARTMENT OF TRANSPORTATION

|                      |         |        |                    |           |             |
|----------------------|---------|--------|--------------------|-----------|-------------|
| ROUTE NO.            | SECTION | COUNTY | TOTAL SHEETS       | SHEET NO. | SHEET NO. 3 |
| S.B.L.<br>P.A.P. 305 | #       | COOK   | 72                 | 43        | 6 SHEETS    |
| *2004-108 BR         |         |        | Contract No. 62853 |           |             |



AS BUILT PLAN OF CONCRETE DECK BEAM REPAIRS  
TOP VIEW

NOTE

After removal of the bituminous overlay, any areas with delamination extending to the top mat of reinforcement on the beam shall be cleaned of any loose concrete and filled back up with the concrete overlay. Any area where the damage extends below the top mat of reinforcement on the beam shall be brought to the attention of the Bureau of Bridges and Structures for further disposition. Work included in the cost of "Concrete Wearing Surface."

BRANCO & ZROKA ENGINEERING, P.C.

|          |     |
|----------|-----|
| DESIGNED | LAS |
| CHECKED  | DAZ |
| DRAWN    | SAW |
| CHECKED  | LAS |

February 2005

CONCRETE DECK BEAM REPAIRS I  
WEST FRONTAGE ROAD OVER PALATINE ROAD  
FAP 305/PALATINE ROAD  
SECTION 2004-108 BR  
COOK COUNTY  
STA. 0+88.97  
STRUCTURE NO. 016-2530