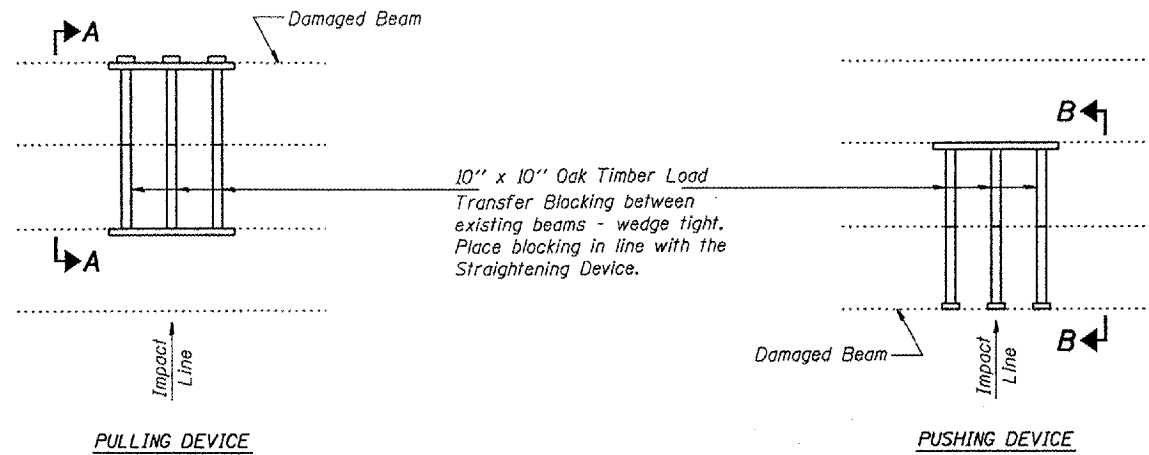


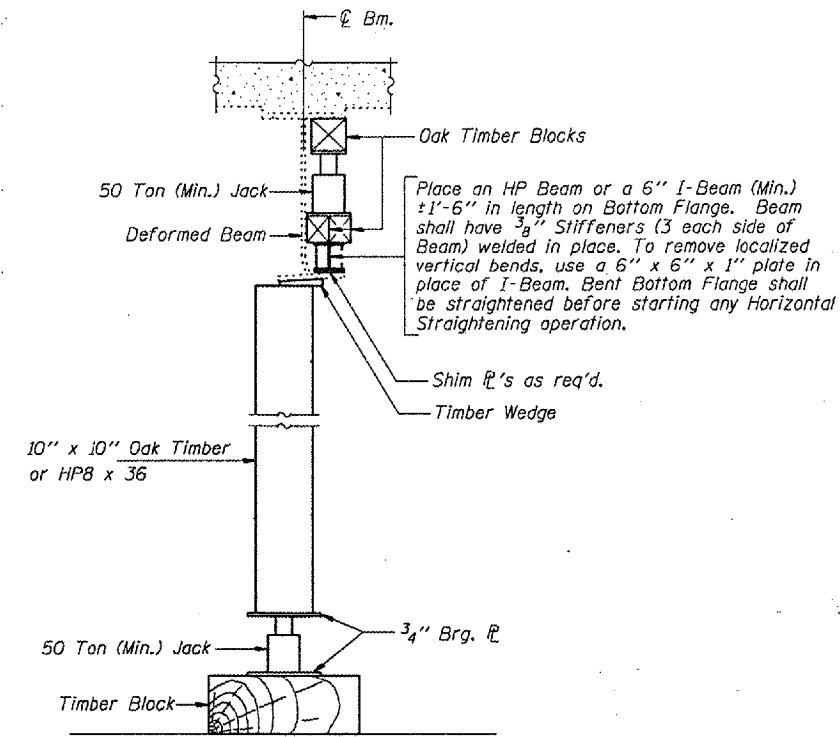
STATE OF ILLINOIS
DEPARTMENT OF TRANSPORTATION

ROUTE NO.	SECTION	COUNTY	JOBS	SHEET	SHEET NO. 2
FAI 90		COOK	6	5	2 SHEETS
FED. ROAD DIST. NO. 7					CONTRACT NO. 62875

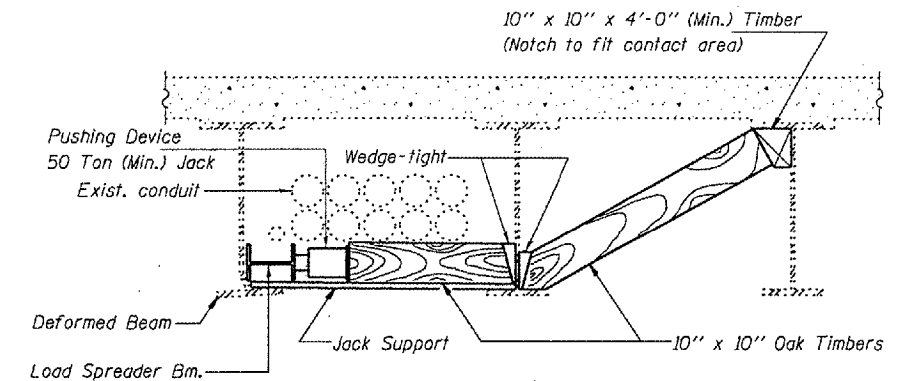


PARTIAL PLANS
SUGGESTED BEAM STRAIGHTENING METHODS

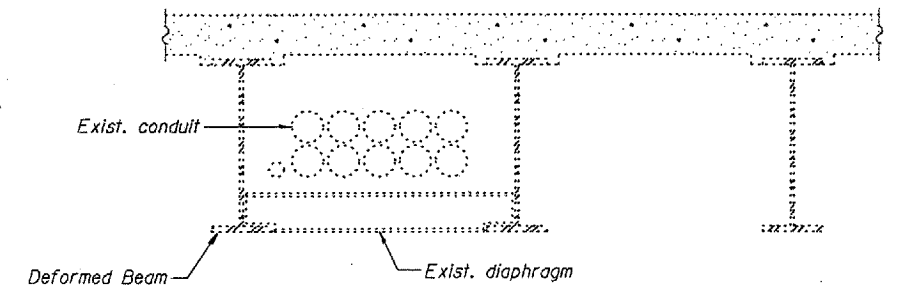
Straightening force shall be maintained on all load transfer blocking during beam straightening.



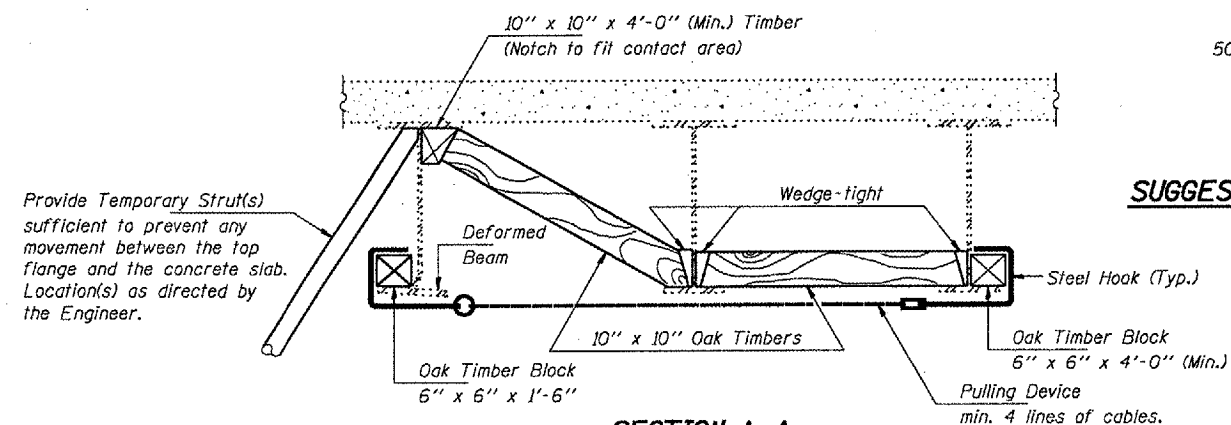
SUGGESTED VERTICAL STRAIGHTENING DETAIL



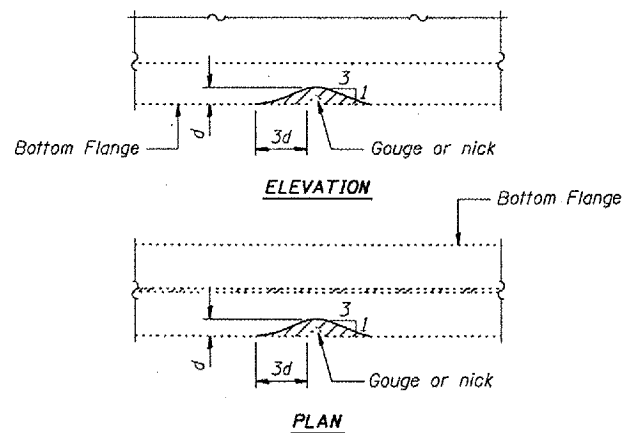
SECTION B-B
(At location of straightening procedure)



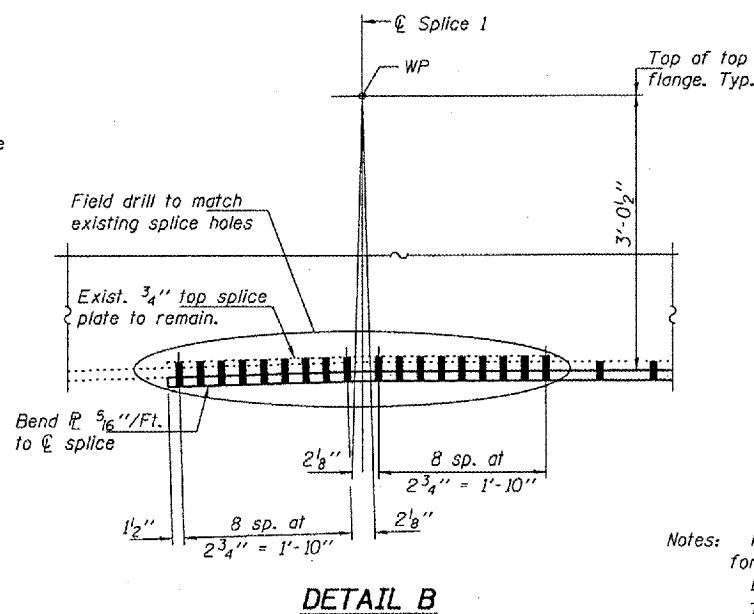
SECTION B-B
(At diaphragm location)



SECTION A-A



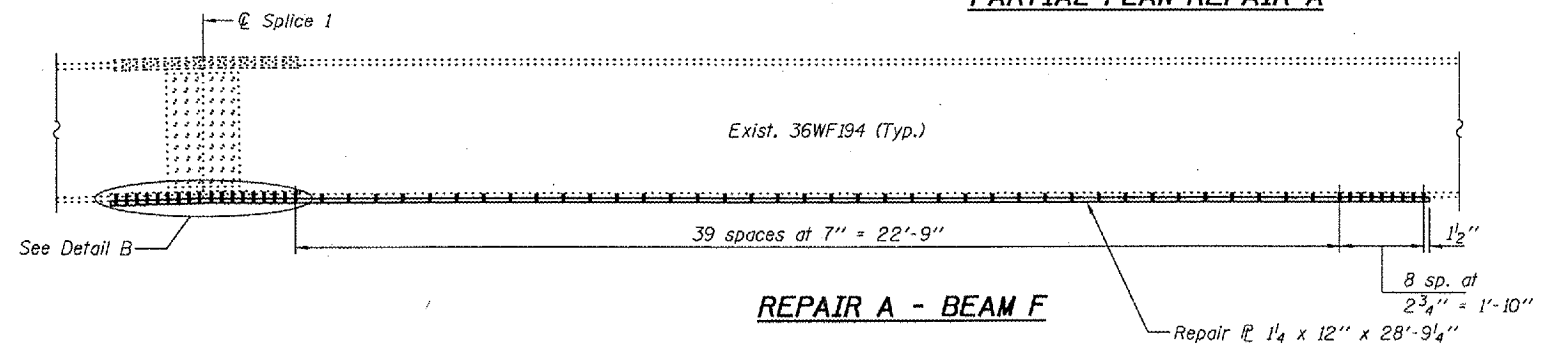
GRINDING DETAIL



DETAIL B

EXISTING DEFORMATION TO BE STRAIGHTENED

(Looking South)
(Approximate max. deflections)
Deflected length of beam to be straightened is approximately 24'-6\"/>



REPAIR A - BEAM F

DESIGNED	JSB
CHECKED	PSJ
DRAWN	baliva
CHECKED	JSB PSJ

APRIL 11, 2005
EXAMINED *John A. Morris*
ENGINEER OF STRUCTURAL SERVICES
PASSED *Ralph E. Anderson*
ENGINEER OF BRIDGES AND STRUCTURES

Notes: Fasteners shall be high strength bolts. Holes for Repair A shall be 5/16" φ for 7/8" φ bolts.
Existing bolts shall not be re-used.
The cost of field drilling required for installation of the steel members is included with Structural Steel Repair.

BEAM STRAIGHTENING
CIRCLE AVE. OVER I-290, CSX & CTA
COOK COUNTY
S.N. 016-0995