

ROUTE	SECTION	COUNTY	TOTAL SHEETS	SHEET NUMBER
FAP 330	2004-130I	WILL	14	2

INDEX OF SHEETS

CONTRACT: 62900

GENERAL NOTES

- 1 TITLE SHEET
- 2 INDEX OF SHEETS, STATE STANDARDS AND GENERAL NOTES
- 3-4 SUMMARY OF QUANTITIES
- 5 TRAFFIC STAGING PLANS, LOCATION 1, SN 099-0118
- 6 TRAFFIC STAGING PLANS, LOCATION 2, SN 099-0119
- 7-10 BRIDGE REPAIR PLANS, LOCATION 1, SN 099-0118
- 11-12* BRIDGE REPAIR PLANS, LOCATION 2, SN 099-0118
- 14 TRAFFIC CONTROL AND PROTECTION FOR SIDE ROADS, INTERSECTIONS & DRIVEWAYS

11-12*
14

*Sheet 13 is deleted.

STATE STANDARDS

- 701301-02 LANE CLOSURE, 2L, 2W, SHORT TIME OPERATIONS
- 701321-00 LANE CLOSURE, 2L, 2W, BRIDGE REPAIR WITH BARRIER
- 702001-05 TRAFFIC CONTROL DEVICES
- 704001-02 TEMPORARY CONCRETE BARRIER

BITUMINOUS MIXTURE REQUIREMENTS

MIXTURE	AC TYPE	MAX RAP (%)	AIR VOIDS
BIT. CONC. SURFACE CSE. SUPERPAVE, MIX "D" N50	PG 64-22	15%	4% @ 50 GTR.

*THE UNIT WEIGHT USED TO CALCULATE ALL BITUMINOUS SURFACE MIXTURE QUANTITIES IS 112 Lbs/SqYd/in.
NO VIBRATORY ROLLERS ALLOWED ON BRIDGE DECK

BEFORE STARTING ANY EXCAVATION, THE CONTRACTOR SHALL CALL "J.U.L.I.E." AT (800) 892-0123 FOR FIELD LOCATIONS OF BURIED ELECTRIC, TELEPHONE AND GAS UTILITIES. (48 HOUR NOTIFICATION IS REQUIRED).

THE CONTRACTOR WILL NOT BE ALLOWED TO SET UP A YARD OR FIELD OFFICE ON STATE PROPERTY WITHOUT WRITTEN PERMISSION FROM THE DEPARTMENT.

BEFORE BEGINNING ANY WORK, THE CONTRACTOR SHALL RETAIN AND RECORD (FOR FUTURE REFERENCES), ALL EXISTING PAVEMENT MARKING LINES AND RAISED REFLECTIVE PAVEMENT MARKERS IN ORDER THAT THESE LOCATIONS CAN BE RE-ESTABLISHED FOR STRIPING. EXACT LOCATIONS OF ALL STRIPING SHALL BE AS DIRECTED BY THE ENGINEER.

ALL DAMAGE TO EXISTING PAVEMENT MARKINGS OR RAISED REFLECTIVE PAVEMENT MARKERS OUTSIDE THE CONCRETE REMOVAL LINE SHOWN ON THE PLANS SHALL BE REPLACED AT THE CONTRACTOR'S EXPENSE.

THE CONTRACTOR SHALL CONTACT THE DISTRICT ONE TRAFFIC CONTROL SUPERVISOR AT (847) 705-4470 A MINIMUM OF 72 HOURS IN ADVANCE OF BEGINNING WORK.

THE CONTRACTOR SHALL CONTACT MS. DEBBIE HANLON, TRAFFIC FIELD ENGINEER AT (847) 438-2300, TWO (2) WEEKS PRIOR TO PLACEMENT OF PERMANENT PAVEMENT MARKINGS.

THESE PLANS HAVE BEEN PREPARED FROM NOTES RECEIVED FROM DISTRICT BRIDGE INSPECTORS.

THE THICKNESS OF THE BITUMINOUS MIXTURE SHOWN ON THE PLANS IS THE NOMINAL THICKNESS. DEVIATIONS FROM THE NOMINAL THICKNESS WILL BE PERMITTED WHEN SUCH DEVIATIONS OCCUR DUE TO IRREGULARITIES IN THE EXISTING SURFACE OR BASE ON WHICH THE BITUMINOUS MIXTURE IS PLACED.

THE CONTRACTOR SHALL BE REQUIRED TO PROVIDE ACCESS TO ABUTTING PROPERTY AT ALL TIMES DURING THE CONSTRUCTION OF THIS PROJECT.

DO NOT SCALE PLANS FOR CONSTRUCTION DIMENSIONS.

CONCRETE SUPERSTRUCTURE SHALL HAVE A SEVEN (7) DAY MINIMUM CURE TIME.

ILLINOIS DEPARTMENT OF TRANSPORTATION

INDEX OF SHEETS
STATE STANDARDS
GENERAL NOTES

Revised 9/15/05

ROUTE	SECTION	COUNTY	TOTAL SHEETS	SHEET NUMBER
FAP 330	2004-130I	WILL	14	3

CONTRACT: 62900

LOCATION OF WORK: 1) US 45 OVER NORTH BRANCH PRAIRIE CREEK, SN 099-0118
2) US 45 OVER PRAIRIE CREEK, SN 099-0119

SUMMARY OF QUANTITIES			CONSTRUCTION TYPE CODE		
CODE NO.	DESCRIPTION	UNIT	TOTAL QUANTITIES	SFTY -2A	
				Loc. 1: SN 099-0118	Loc. 2: SN 099-0119
44001000	BITUMINOUS CONCRETE SURFACE REMOVAL	SQ YD	91.9	83.6	8.3
50102400	CONCRETE REMOVAL	CU YD	13.7	5.2	8.5
50300100	FLOOR DRAINS	EACH	6		6
50300255	CONCRETE SUPERSTRUCTURE	CU YD	13.7	5.2	8.5
50300300	PROTECTIVE COAT	SQ YD	33.7	19.5	14.2
50400405	PRECAST PRESTRESSED CONCRETE DECK BEAMS (21" DEPTH)	SQ FT	1065	1065	
50400305	PRECAST PRESTRESSED CONCRETE DECK BEAMS (17" DEPTH)	SQ FT	1005		1005
50800205	REINFORCEMENT BARS, EPOXY COATED	POUND	2190	830	1360
58100200	WATERPROOFING MEMBRANE SYSTEM	SQ YD	303.5	193.5	110
58300100	PORTLAND CEMENT MORTAR FAIRING COURSE	FOOT	867	494	373
67000400	ENGINEER'S FIELD OFFICE, TYPE A	CAL MO	4	2	2
67100100	MOBILIZATION	L SUM	1	0.5	0.5
70100405	TRAFFIC CONTROL AND PROTECTION, STANDARD 701321	EACH	2	1	1
70400100	TEMPORARY CONCRETE BARRIER	FOOT	360	180	180
70400200	RELOCATE TEMPORARY CONCRETE BARRIER	FOOT	360	180	180
89000100	TEMPORARY TRAFFIC SIGNAL INSTALLATION	EACH	2	1	1

ILLINOIS DEPARTMENT OF TRANSPORTATION

SUMMARY OF QUANTITIES
(SHEET 1 OF 2)

Rev. 9-14-05

Rev.

62900

GENERAL NOTES

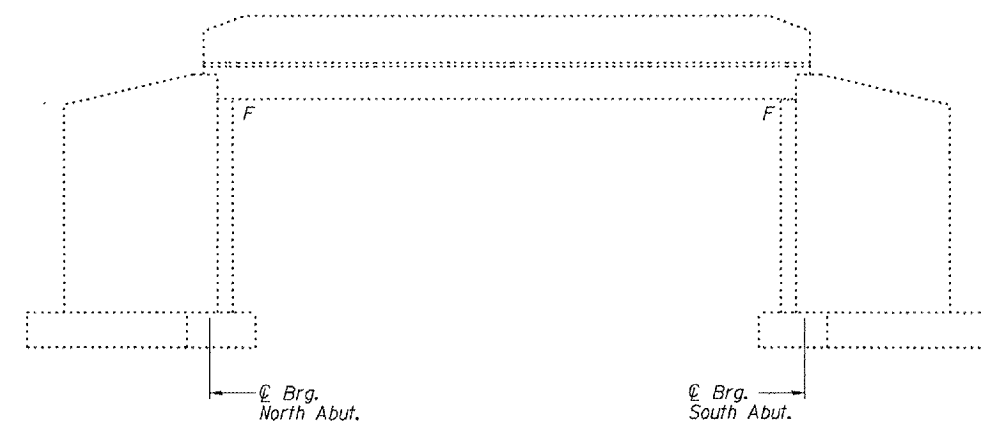
Plan dimensions and details relative to existing structure have been taken from existing plans and are subject to nominal construction variations. It shall be the Contractor's responsibility to verify such dimensions and details in the field and make necessary approved adjustments prior to construction or ordering of materials. Such variations shall not be cause for additional compensation for a change in the scope of the work, however, the Contractor will be paid for the quantity actually furnished at the unit price bid for the work.

Any damage done to the bridge during beam removal shall be repaired by the Contractor. Cost to be included in the cost of "Removal of Existing P.P.C. Deck Beams".

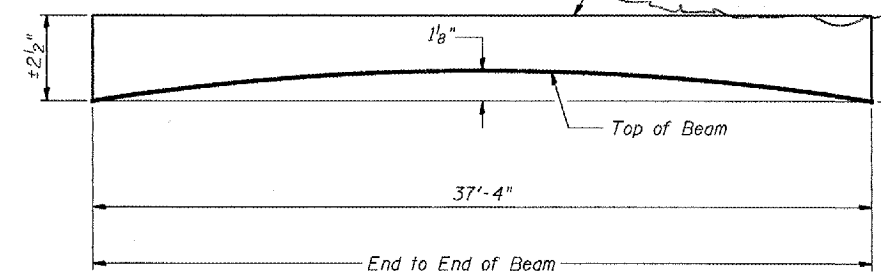
Reinforcement bars shall conform to the requirements of AASHTO M-31 or M322 Grade 60.

The top surface of the beams shall be finished in accordance with Article 504.06 of the Standard Specifications except that the surface shall not be roughened by brooming. The finished surface shall be free of depressions or high spots with sharp corners, and the top edge of keys shall be rounded or chamfered a minimum of 1/4".

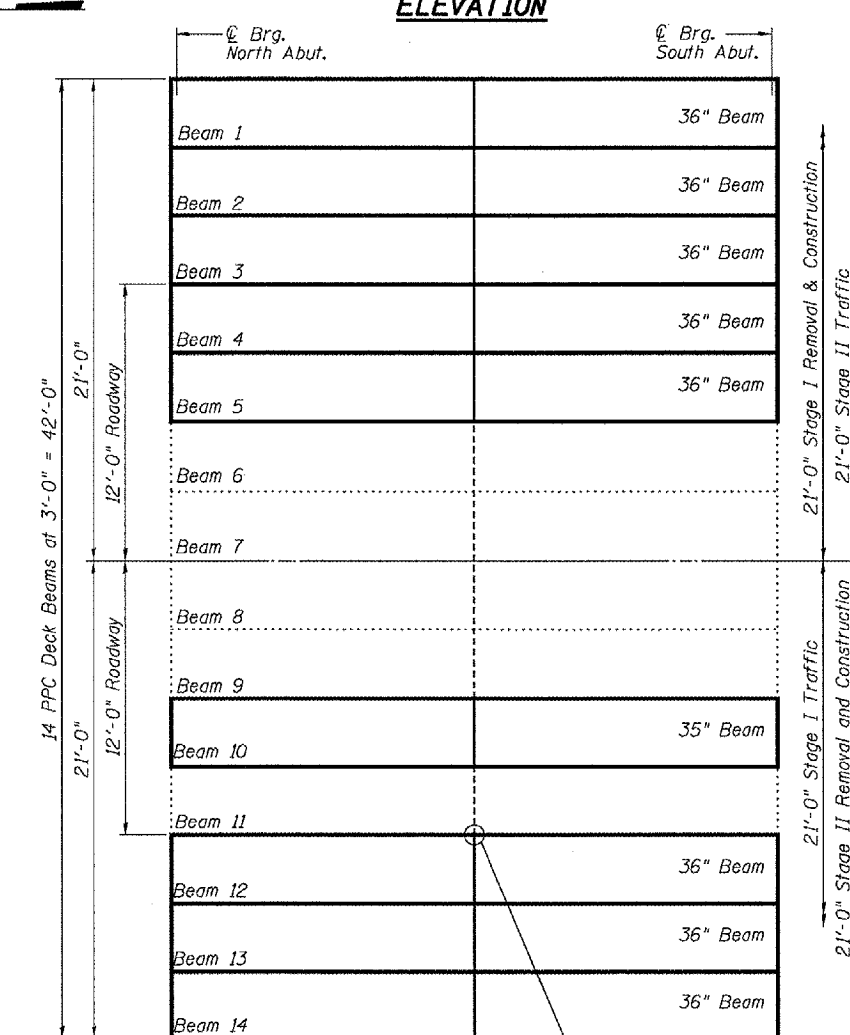
Temporary concrete barrier shall only be anchored into the overlay and not the PPC Deck Beams.



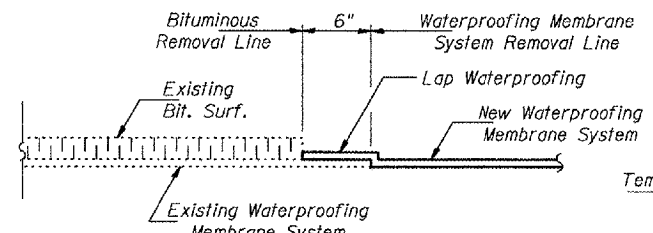
ELEVATION



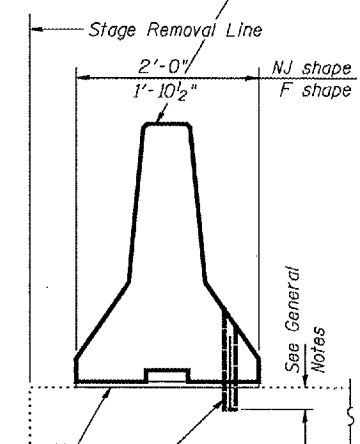
ANTICIPATED INITIAL CAMBER DIAGRAM



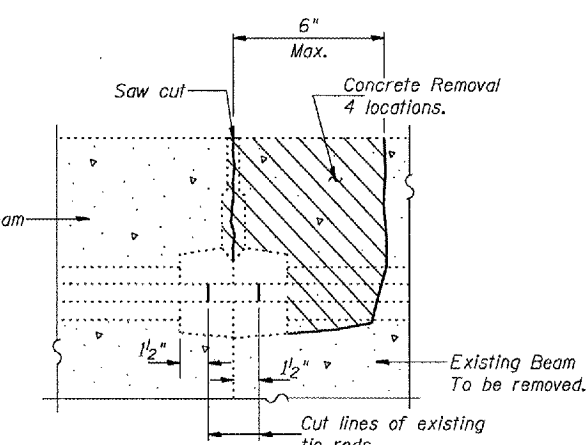
PLAN



WATERPROOFING TREATMENT



SECTIONS THRU SLAB SHOWING TEMPORARY CONCRETE BARRIER

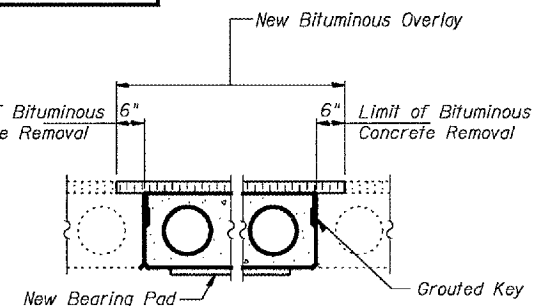


BEAM REMOVAL DETAIL AT TRANSVERSE TIES

TOTAL BILL OF MATERIAL

ITEM	UNIT	QUANTITY
Precast Prestressed Concrete Deck Beams (17" Depth)	Sq. Ft.	1005
Bituminous Concrete Surface Removal	Sq. Yd.	8.3
Removal of Existing PPC Deck Beams	Sq. Ft.	1008
Bituminous Concrete Surface Course, Superpave Mix "D" N50	Ton	12.4
PC Mortar Fairing Course	Foot	373
Reinforcement Bars, Epoxy Coated	Pound	1360
Waterproofing Membrane System	Sq. Yd.	110
Concrete Superstructure	Cu. Yd.	8.5
Concrete Removal	Cu. Yd.	8.5
Floor Drains	Each	6
Protective Coat	Sq. Yd.	14.2

Existing Tie Rods to be cut (Typ). See Detail This sheet.



PARTIAL CROSS SECTION



Expires 11-30-06

**DESIGN STRESSES
PRESTRESS UNITS**

f'c = 5,000 psi
f'ci = 4,000 psi
f's = 270,000 psi (1/2" Low Relaxation Strands)
f'si = 201,960 psi (1/2" Low Relaxation Strands)

PLAN AND ELEVATION

F.A. RT. 124
WILL COUNTY
SN.099-0119

DESIGNED: Vicker H. Vetter
CHECKED: Mike Traylor
DRAWN: [Signature]
CHECKED: MJT VHV

May 8, 2005
EXAMINED: John A. Morris
PASSED: Ralph E. Anderson

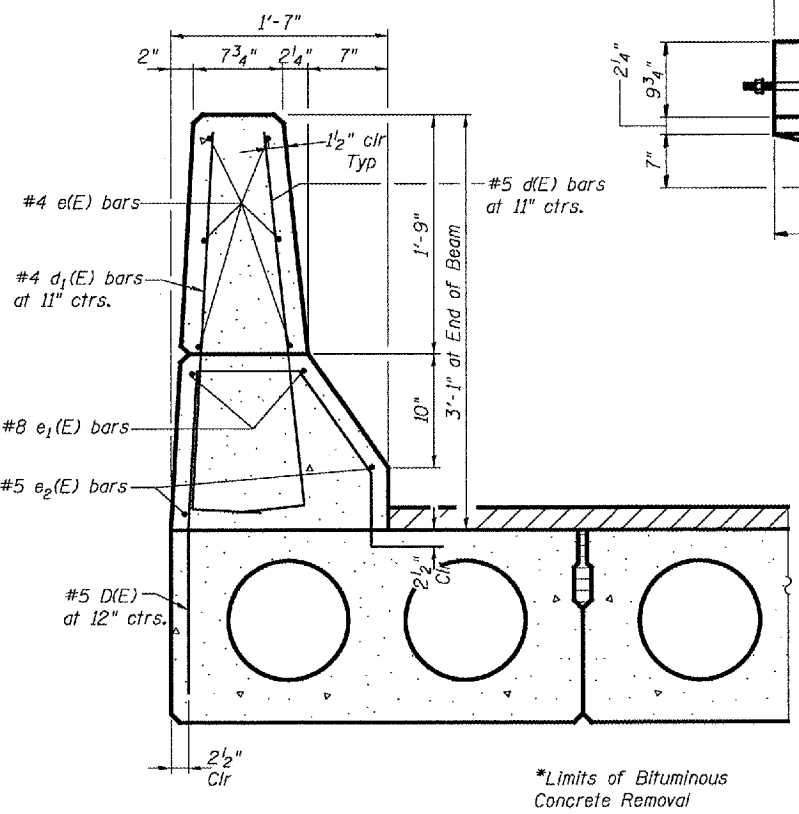
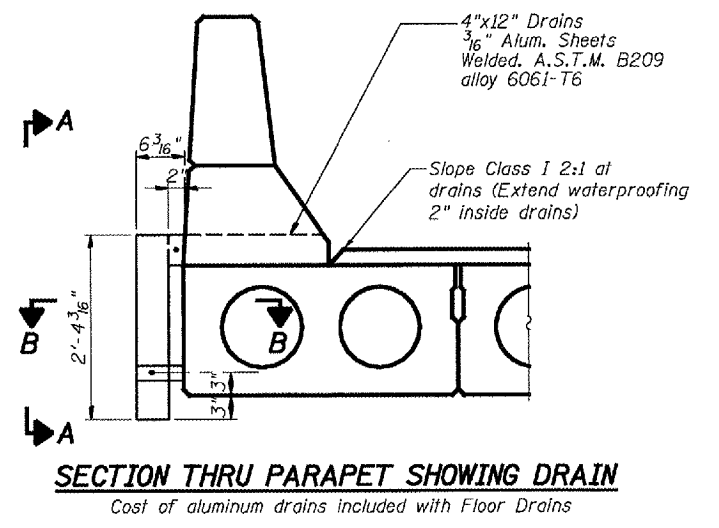
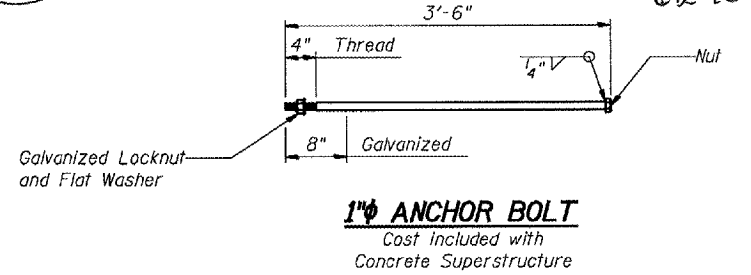
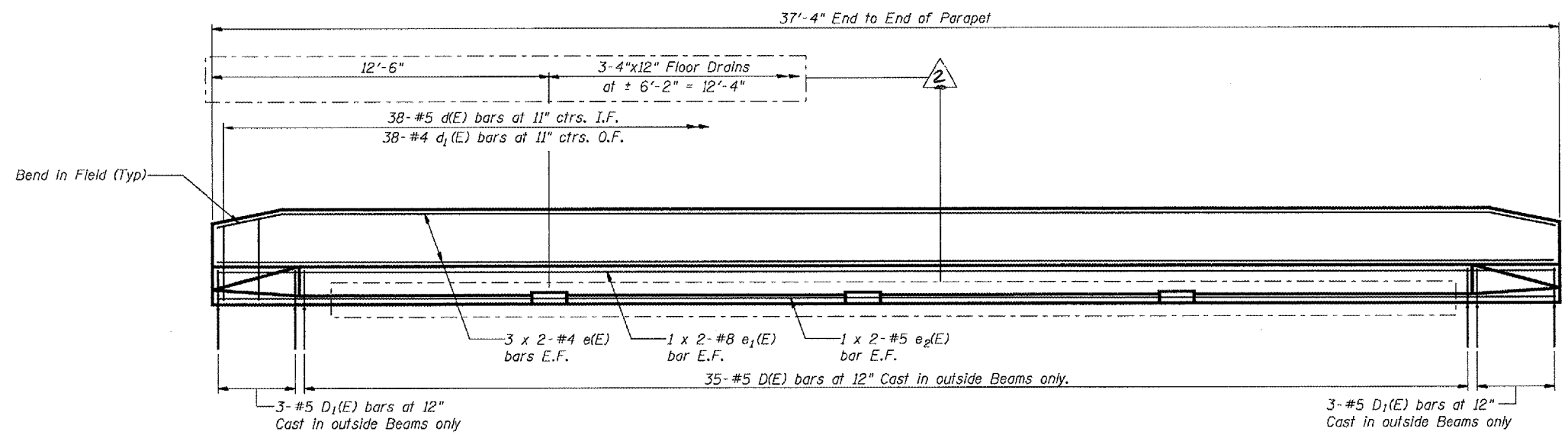
Revised 9/15/05

STATE OF ILLINOIS
DEPARTMENT OF TRANSPORTATION

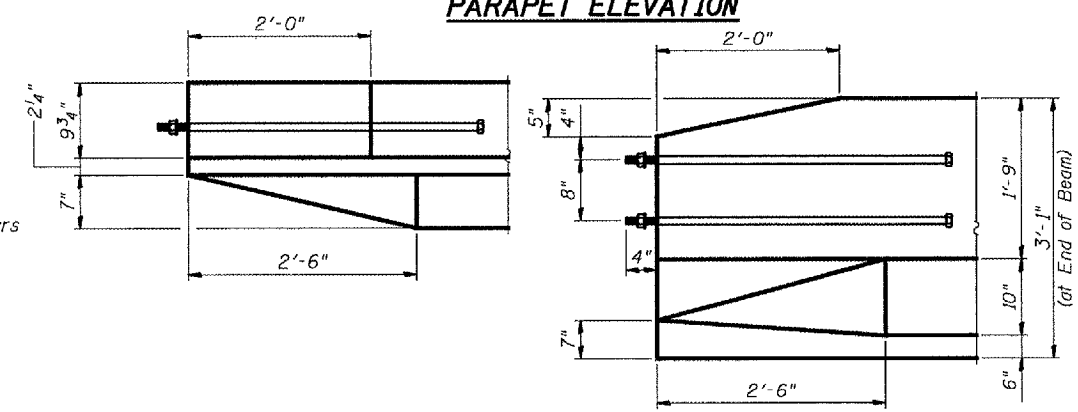
Sheet 13 is deleted.
Next sheet is 14.

ROUTE NO.	SECTION	COUNTY	TOTAL SHEETS	SHEET NO.
		Will	14	12
FED. ROAD DIST. NO. 7	ILLINOIS	FED. AID PROJECT		

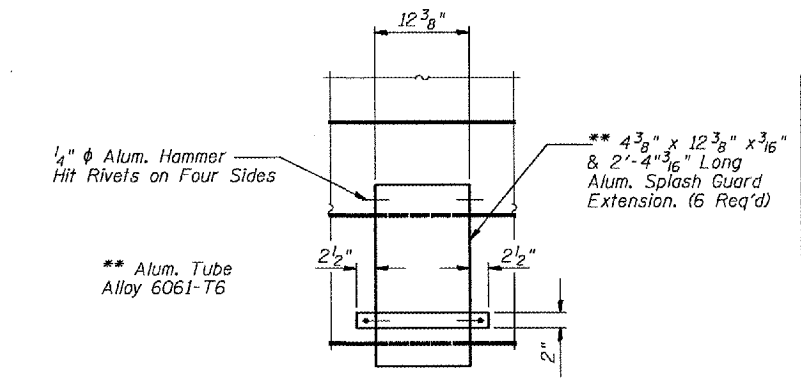
SHEET NO. 3
3 SHEETS
62900



PARAPET ELEVATION

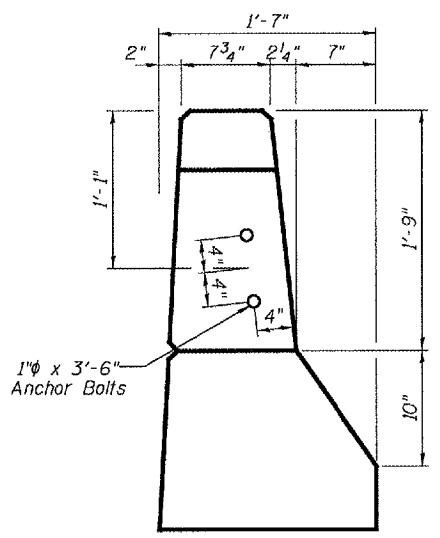


SECTION B-B

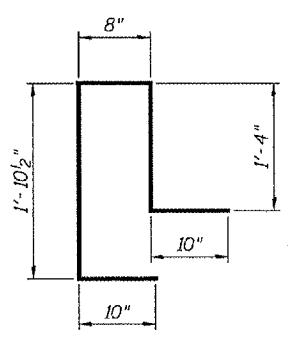


SECTION A-A

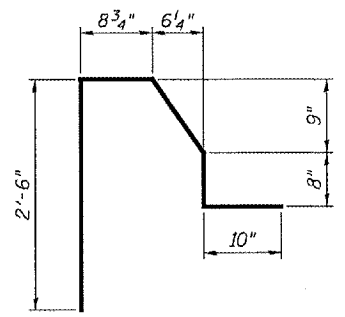
PARAPET END DETAILS



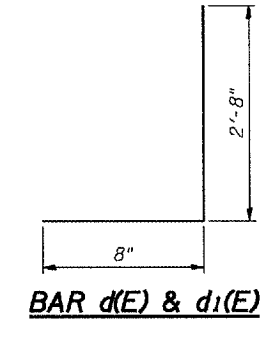
PARAPET END VIEW



BAR D₁(E)



BAR D(E)



BAR d(E) & d₁(E)

BILL OF MATERIAL

Bar	No.	Size	Length	Shape
d(E)	76	#5	3'-4"	U
d ₁ (E)	76	#4	3'-4"	U
e(E)	24	#4	19'-6"	—
e ₁ (E)	8	#8	20'-11"	—
e ₂ (E)	8	#5	19'-9"	—
Reinforcement Bars Epoxy Coated		Pound	1360	
Concrete Superstructure		Cu. Yd.	8.5	
Concrete Removal		Cu. Yd.	8.5	

All Bars Designated (E) Shall be Epoxy Coated.

Min. Bar Laps

- #4 = 1'-8"
- #5 = 2'-2"
- #8 = 4'-6"

PARAPET DETAILS
F.A. RT. 124
WILL COUNTY
SN.099-0119

DESIGNED	V.H.V.	EXAMINED	John A. Morris ENGINEER OF STRUCTURAL SERVICES
CHECKED	M.J.T.	PASSED	Ralph E. Anderson ENGINEER OF BRIDGES AND STRUCTURES
DRAWN	Drew Christopher		
CHECKED	V.H.V. M.J.T.		

May 5, 2005