

F.A.P.	SECTION	COUNTY	TOTAL SHEETS	SHEET NO.
334	2005-002 TS	LAKE	12	10
STA.		TO STA.		
FED. ROAD DIST. NO.		ILLINOIS FED. AID PROJECT		
CONTRACT NO. 62906				

NOTE:
THE TRAFFIC SIGNAL CONTROL EQUIPMENT FOR THIS PROJECT IS "ECONOLITE"

SUMMARY OF QUANTITIES

PAY ITEM	UNIT	QUANTITY
MODIFY EXISTING CONTROLLER	EACH	1
ENGINEER'S FIELD OFFICE, TYPE A	CAL MO	0.25
MAINTENANCE OF EXISTING TRAFFIC SIGNAL INSTALLATION	EACH	1
ELECTRIC CABLE IN CONDUIT, LEAD-IN, NO. 14 1 PAIR	FOOT	340
PEDESTRIAN PUSH-BUTTON	EACH	8
REMOVE EXISTING TRAFFIC SIGNAL EQUIPMENT	EACH	1
PEDESTRIAN SIGNAL HEAD, 1-FACE, BRACKET MOUNTED	EACH	4
PEDESTRIAN SIGNAL HEAD, 2-FACE, BRACKET MOUNTED	EACH	2
SERVICE INSTALLATION, POLE-MOUNTED	EACH	1
ELECTRIC CABLE IN CONDUIT, GROUNDING, NO. 6 1C	FOOT	70
TRAFFIC SIGNAL POST, GALVANIZED STEEL 16'	EACH	4
RELOCATE EXISTING SIGNAL HEAD	EACH	4

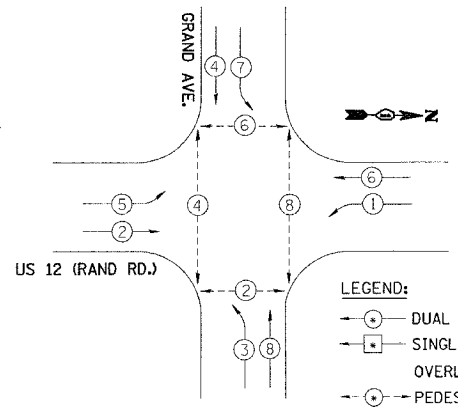
- NOTES:
- ① REUSE EXISTING CABLE FOR ALL NEW PEDESTRIAN SIGNAL HEADS INSTALLATION
 - ② INSTALL NEW ELECTRIC CABLE IN CONDUIT, LEAD-IN, NO. 14, 1 PAIR

NOTES: REMOVE ALL NEAR RIGHT SIGNAL HEADS

REVISIONS	
NAME	DATE

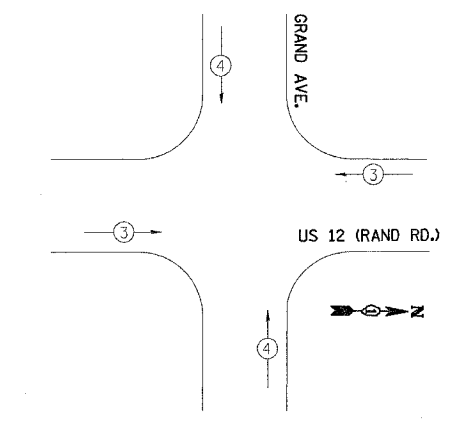
ILLINOIS DEPARTMENT OF TRANSPORTATION
CABLE PLAN, PHASE DESIGNATION DIAGRAM,
EMERGENCY VEHICLE PREEMPTION SEQUENCE
AND SCHEDULE OF QUANTITIES
US 12 (RAND RD.) AT GRAND AVE.
SCALE: NONE
DATE: 05/05
DRAWN BY: SN
DESIGNED BY: SN
CHECKED BY: DD

CONTROLLER SEQUENCE



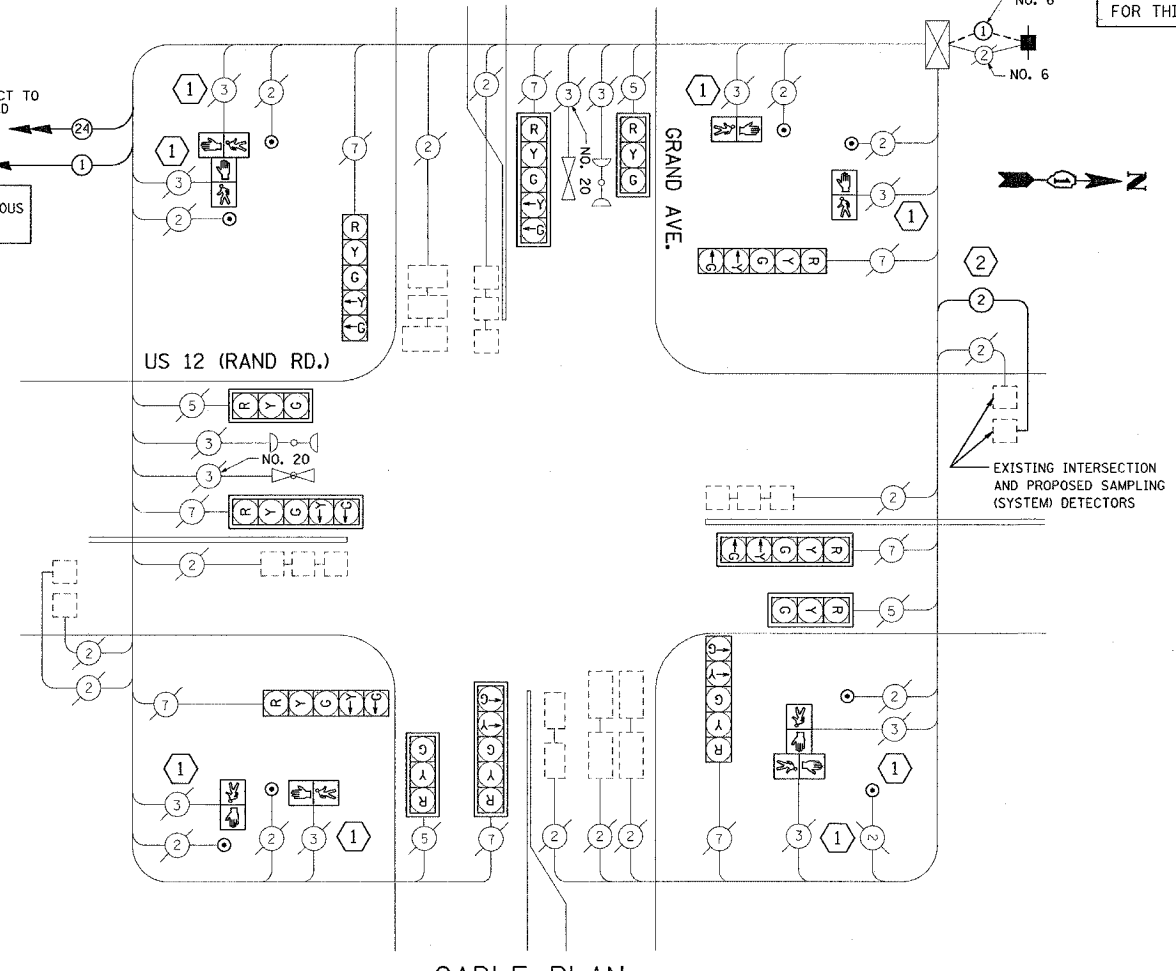
- LEGEND:
- DUAL ENTRY PHASE
 - SINGLE ENTRY PHASE
 - OVERLAP
 - PEDESTRIAN PHASE
 - NUMBER REFERS TO ASSOCIATED PHASE

PHASE DESIGNATION DIAGRAM



PROPOSED EMERGENCY VEHICLE PREEMPTORS		
EMERGENCY VEHICLE PREEMPTOR	3	4
MOVEMENT	←	↑

INTERCONNECT TO SAYTON ROAD
TRACER CABLE
THE END OF THE TRACER CABLE SHALL BE CONTINUOUS AND EXTEND INTO THE CONTROLLER CABINET.



CABLE PLAN
NOT TO SCALE

CABLE PLAN LEGEND

- | EXISTING | PROPOSED | EXISTING | PROPOSED | DESCRIPTION |
|----------|----------|----------|----------|--|
| ⊗ | ⊗ | ② | ② | 8" (200mm) TRAFFIC SIGNAL SECTION |
| ⊗ | ⊗ | ① | ① | 12" (300mm) TRAFFIC SIGNAL SECTION |
| ⊗ | ⊗ | ① | ① | 12" (300mm) PEDESTRIAN SIGNAL SECTION |
| ⊗ | ⊗ | ②④ | ②④ | 12" (300mm) PEDESTRIAN SIGNAL SECTION |
| ⊗ | ⊗ | ⊗ | ⊗ | CONTROLLER CABINET |
| ⊗ | ⊗ | ⊗ | ⊗ | SERVICE INSTALLATION |
| ⊗ | ⊗ | ⊗ | ⊗ | VEHICLE DETECTOR, INDUCTION LOOP |
| ⊗ | ⊗ | ⊗ | ⊗ | TELEPHONE INSTALLATION |
| ⊗ | ⊗ | ⊗ | ⊗ | MAGNETIC DETECTOR |
| ⊗ | ⊗ | ⊗ | ⊗ | EMERGENCY VEHICLE LIGHT DETECTOR |
| ⊗ | ⊗ | ⊗ | ⊗ | CONFIRMATION BEACON |
| ⊗ | ⊗ | ⊗ | ⊗ | PUSHBUTTON DETECTOR |
| ⊗ | ⊗ | ⊗ | ⊗ | RAILROAD CONTROL CABINET |
| ⊗ | ⊗ | ⊗ | ⊗ | ILLUMINATED SIGN "NO LEFT TURN" |
| ⊗ | ⊗ | ⊗ | ⊗ | ILLUMINATED SIGN "NO RIGHT TURN" |
| ⊗ | ⊗ | ⊗ | ⊗ | GROUND ROD AT HANDHOLE (H), DOUBLE HANDHOLE (H), OR CONTROLLER (C) |
| ⊗ | ⊗ | ⊗ | ⊗ | GROUND ROD AT POST (P) OR MAST ARM POLE (MA) |
| ⊗ | ⊗ | ⊗ | ⊗ | GROUND ROD AT ELECTRIC SERVICE INSTALLATION |

FOUNDATION (DEPTH)	(FT.) (m)	CABLE SLACK	(FT.) (m)	CABLE SLACK	(FT.) (m)
TYPE A - POST	4 (1.2)	HANDHOLE	6.5 (2.0)	ALL FOUNDATIONS	3.5 (1.0)
D - CONTROLLER	4 (1.2)	DOUBLE HANDHOLE	13 (4.0)	MAST ARM (L) POLE	20'-H/-2' = (6m-H/-0.6m)
E - M. ARM POLE	2 (0.6)	SIGNAL POST	2 (0.6)	BRACKET MOUNTED	13 (4.0)
24" (600mm)	10 (3.0)	CONTROLLER CAB.	1 (0.3)	PED. PUSHBUTTON	4 (1.2)
30" (750mm)	15 (4.6)	FIBER OPTIC	13 (4.0)	ELECTRIC SERVICE	13.5 (4.1)
		ELECTRIC SERVICE	1 (0.3)	SERVICE TO GROUND	13.5 (4.1)
		GROUND CABLE	1 (0.3)	POST MOUNTED	6 (1.8)

I.D.O.T. TRAFFIC SIGNAL INSTALLATION ELECTRICAL SERVICE REQUIREMENTS					TOTAL WATTAGE
TYPE	NO. LAMPS	WATTAGE		% OPERATION	
		INCAND	LED		
SIGNAL (RED)	12	135	17	0.50	810
(YELLOW)	12	135	25	0.25	405
(GREEN)	12	135	15	0.25	405
ARROW	16	135	12	0.10	216
PED. SIGNAL	8	90	25	1.00	720
CONTROLLER	1	100	100	1.00	100
ILLUM. SIGN		84	35	0.05	
TOTAL =					2656

ENERGY COSTS TO:
ILLINOIS DEPARTMENT OF TRANSPORTATION
201 WEST CENTER COURT
SCHAUMBURG, ILLINOIS 60196-1096
ENERGY SUPPLY CONTACT: JUDY SCHOMER
PHONE: 847-870-2063
COMPANY: COMMONWEALTH EDISON

PLOT DATE = 6/23/2005
 FILE NAME = c:\projects\traffic\11111111\11111111.mxd
 PLOT SCALE = 24.8273 / IN.
 REFERENCE = #REF#

11:30:04 06/23/2005