

F.A.U. RTE.	SECTION	COUNTY	TOTAL SHEETS	SHEET NO.
3902	2005-003 TS	KANE	20	12
STA.		TO STA.		
FED. ROAD DIST. NO.		ILLINOIS FED. AID PROJECT		
CONTRACT NO. 62907				

THE FOLLOWING EXISTING TRAFFIC SIGNAL EQUIPMENT SHALL BE REMOVED BY THE CONTRACTOR, SHALL REMAIN THE PROPERTY OF THE STATE AND SHALL BE DELIVERED BY THE CONTRACTOR TO THE STATE'S TRAFFIC SIGNAL MAINTENANCE CONTRACTOR'S MAIN FACILITY AS PER THE TRAFFIC SIGNAL SPECIFICATION.

- 1 EACH CONTROLLER AND CABINET, COMPLETE

THE FOLLOWING ITEMS SHALL BE REMOVED BY THE CONTRACTOR AND SHALL BE DISPOSED OF BY THEM OUTSIDE OF THE RIGHT-OF-WAY AT THEIR EXPENSE. THE SALVAGE VALUE OF THE REMOVED EQUIPMENT SHALL BE REFLECTED IN THE CONTRACTOR BID PRICE.

- 2 EACH SIGNAL HEAD, 1-FACE 3 SECTION
- 1 EACH SIGNAL HEAD, 1 FACE 3 SECTION MAST ARM MOUNTED
- 1 EACH SIGNAL HEAD, 1 FACE 5 SECTION MAST ARM MOUNTED
- 2 EACH SIGNAL HEAD, 2-FACE 3 SECTION
- 2 EACH SIGNAL HEAD, 2 FACE 1-3 SECTION, 1-5 SECTION
- 3 EACH TRAFFIC SIGNAL POST
- 2 EACH TRAFFIC SIGNAL BACKPLATE
- 1 EACH STEEL MAST ARM ASSEMBLY AND POLE
- 1 EACH SERVICE INSTALLATION
- 4 EACH PEDESTRIAN PUSH-BUTTON
- 4 EACH PEDESTRIAN SIGNAL HEADS

CONSTRUCTION NOTES:

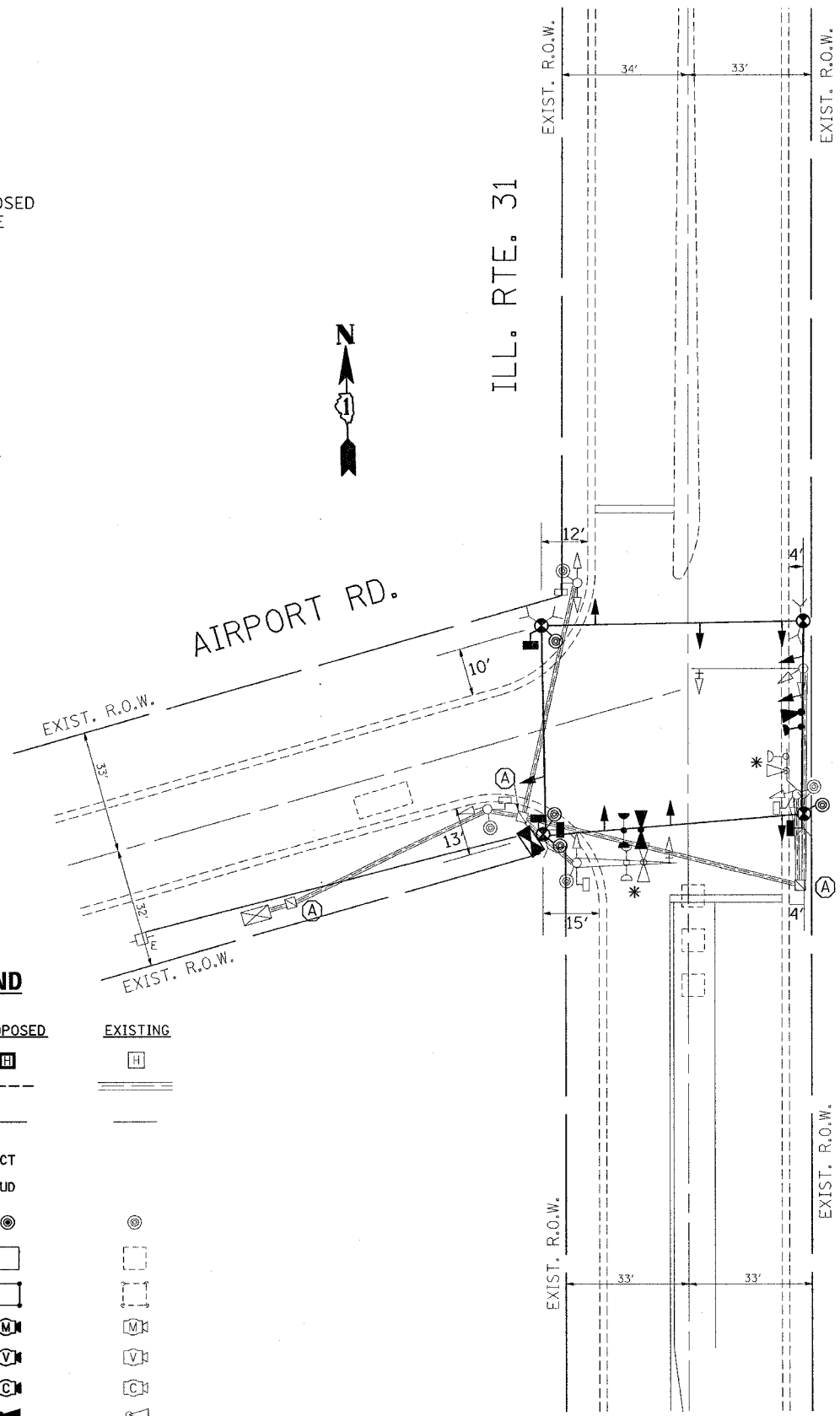
ALL EXISTING CABLES AND CONDUIT ARE TO BE ABANDONED.
ALL EXISTING CONCRETE POST FOUNDATIONS ARE TO BE REMOVED AND REPLACE.

* THE REMOVAL AND RE-INSTALLATION OF THE EXISTING EVP SHALL BE INCLUDED IN THE PRICE OF THE NEW CONTROLLER AT AIRPORT ROAD.

(A) EXISTING HANDHOLE TO BE REMOVED

NOTES FOR TEMPORARY TRAFFIC SIGNALS

- ALL CONTROL EQUIPMENT INCLUDING EMERGENCY PRE-EMPTION AND COMMUNICATION DEVICES FOR THE TEMPORARY TRAFFIC SIGNAL(S) SHALL BE FURNISHED BY THE CONTRACTOR. EVP WILL BE PAID FOR SEPARATELY.
- ONLY CONTROLLERS SUPPLIED BY ONE OF THE DISTRICT APPROVED CLOSED LOOP EQUIPMENT MANUFACTURERS WILL BE APPROVED FOR USE AT TEMPORARY SIGNAL LOCATIONS. ALL CONTROLLERS USED FOR TEMPORARY TRAFFIC SIGNALS SHALL BE FULLY ACTUATED NEMA MICROPROCESSOR BASED WITH RS232 DATA ENTRY PORTS COMPATIBLE WITH EXISTING MONITORING SOFTWARE APPROVED BY IDOT DISTRICT 1, INSTALLED IN A NEMA TS1 OR TS2 CABINET. ONLY ONE BRAND OF CONTROLLER WILL BE ACCEPTED FOR ANY ONE CONTRACT.
- ALL TRAFFIC SIGNAL SECTIONS AND PEDESTRIAN SIGNAL SECTIONS SHALL BE 12" (300mm). HEADS SHALL BE PLACED AS INDICATED ON THE TEMPORARY TRAFFIC SIGNAL PLAN OR AS DIRECTED BY THE ENGINEER. THE CONTRACTOR SHALL FURNISH ENOUGH CABLE SLACK TO RELOCATE HEADS TO ANY POSITION ON THE SPAN WIRE OR AT LOCATIONS ILLUSTRATED ON THE PLANS FOR CONSTRUCTION STAGING. THE TEMPORARY TRAFFIC SIGNAL SHALL REMAIN IN OPERATION DURING ALL SIGNAL HEAD RELOCATIONS. EACH TEMPORARY TRAFFIC SIGNAL HEAD SHALL HAVE ITS OWN CABLE FROM THE CONTROLLER CABINET TO THE SIGNAL HEAD.
- ALL EXISTING STREET NAME AND INTERSECTION REGULATORY SIGNS SHALL BE REMOVED FROM EXISTING POLES. RELOCATED AND SECURELY FASTENED TO THE SIGNAL SPAN WIRE OR WOOD POLE AS DIRECTED BY THE ENGINEER.
- ANY TEMPORARY SIGNAL WITHIN AN EXISTING CLOSED LOOP TRAFFIC SIGNAL SYSTEM SHALL BE INTERCONNECTED TO THAT SYSTEM USING SIMILAR BRAND CONTROL EQUIPMENT.
- THE TEMPORARY TRAFFIC SIGNAL SHALL HAVE THE SIGNAL HEAD DISPLAYS. SIGNAL HEAD PLACEMENTS AND CONTROLLER PHASING MATCH THE EXISTING TRAFFIC SIGNAL. AT THE TIME OF THE TURN ON, IF NO TRAFFIC STAGING IS IN PLACE OR WILL NOT BE STAGED ON THE DAY OF THE TURN ON.



TEMPORARY TRAFFIC SIGNAL AND REMOVAL LEGEND

	PROPOSED	EXISTING		PROPOSED	EXISTING
TEMPORARY CONTROLLER CABINET	[Symbol]	[Symbol]	HEAVY-DUTY HANDHOLE	[Symbol]	[Symbol]
TEMPORARY SERVICE INSTALLATION, (P) POLE OR (G) GROUND MOUNT	[Symbol]	[Symbol]	G.S. CONDUIT IN TRENCH OR PUSHED	[Symbol]	[Symbol]
TEMPORARY TRAFFIC SIGNAL HEAD SPAN WIRE MOUNTED ORIGINAL LOCATION	[Symbol]	[Symbol]	TEMPORARY SPAN WIRE, TETHER WIRE, AND CABLE	[Symbol]	[Symbol]
TEMPORARY TRAFFIC SIGNAL HEAD SPAN WIRE MOUNTED SECONDARY LOCATION	[Symbol]	[Symbol]	COMMON TRENCH	CT	[Symbol]
TEMPORARY PEDESTRIAN SIGNAL HEAD, BRACKET MOUNTED	[Symbol]	[Symbol]	UNIT DUCT	UD	[Symbol]
TEMPORARY WOOD POLE (CLASS 5 OR BETTER) 45 FOOT (13.7m) MINIMUM	[Symbol]	[Symbol]	TEMPORARY PEDESTRIAN PUSHBUTTON DETECTOR	[Symbol]	[Symbol]
EXISTING SIGNAL POST AND FOUNDATION TO BE REMOVED	[Symbol]	[Symbol]	DETECTOR LOOP, TYPE I	[Symbol]	[Symbol]
STEEL MAST ARM ASSEMBLY AND POLE	[Symbol]	[Symbol]	PREFORMED DETECTOR LOOP	[Symbol]	[Symbol]
ALUMINUM MAST ARM ASSEMBLY AND POLE	[Symbol]	[Symbol]	MICROWAVE VEHICLE SENSOR	[Symbol]	[Symbol]
COMBINATION MAST ARM ASSEMBLY AND POLE, STEEL WITH LUMINAIRE	[Symbol]	[Symbol]	VIDEO DETECTOR	[Symbol]	[Symbol]
EXISTING STREET LIGHT, FOUNDATION AND LUMINAIRE TO REMAIN	[Symbol]	[Symbol]	CLOSED CIRCUIT TV	[Symbol]	[Symbol]
HANDHOLE	[Symbol]	[Symbol]	EMERGENCY VEHICLE SYSTEM DETECTOR	[Symbol]	[Symbol]
			CONFIRMATION BEACON	[Symbol]	[Symbol]
			REMOVAL	[Symbol]	[Symbol]
			RELOCATE	[Symbol]	[Symbol]

REVISIONS	
NAME	DATE

ILLINOIS DEPARTMENT OF TRANSPORTATION
**TEMPORARY TRAFFIC SIGNAL
INSTALLATION AND REMOVE
EXISTING TRAFFIC SIGNAL EQUIPMENT**

SCALE: 1"=20'
DATE 7/8/2005

DRAWN BY BCK
DESIGNED BY BCK
CHECKED BY BCK

PLOT DATE = 7/8/2005
FILE NAME = c:\projects\tr-ef\1013880\110.mxd
PLOT SCALE = 20.0000 7/7 IN.
USER NAME = kerr@phoenixg