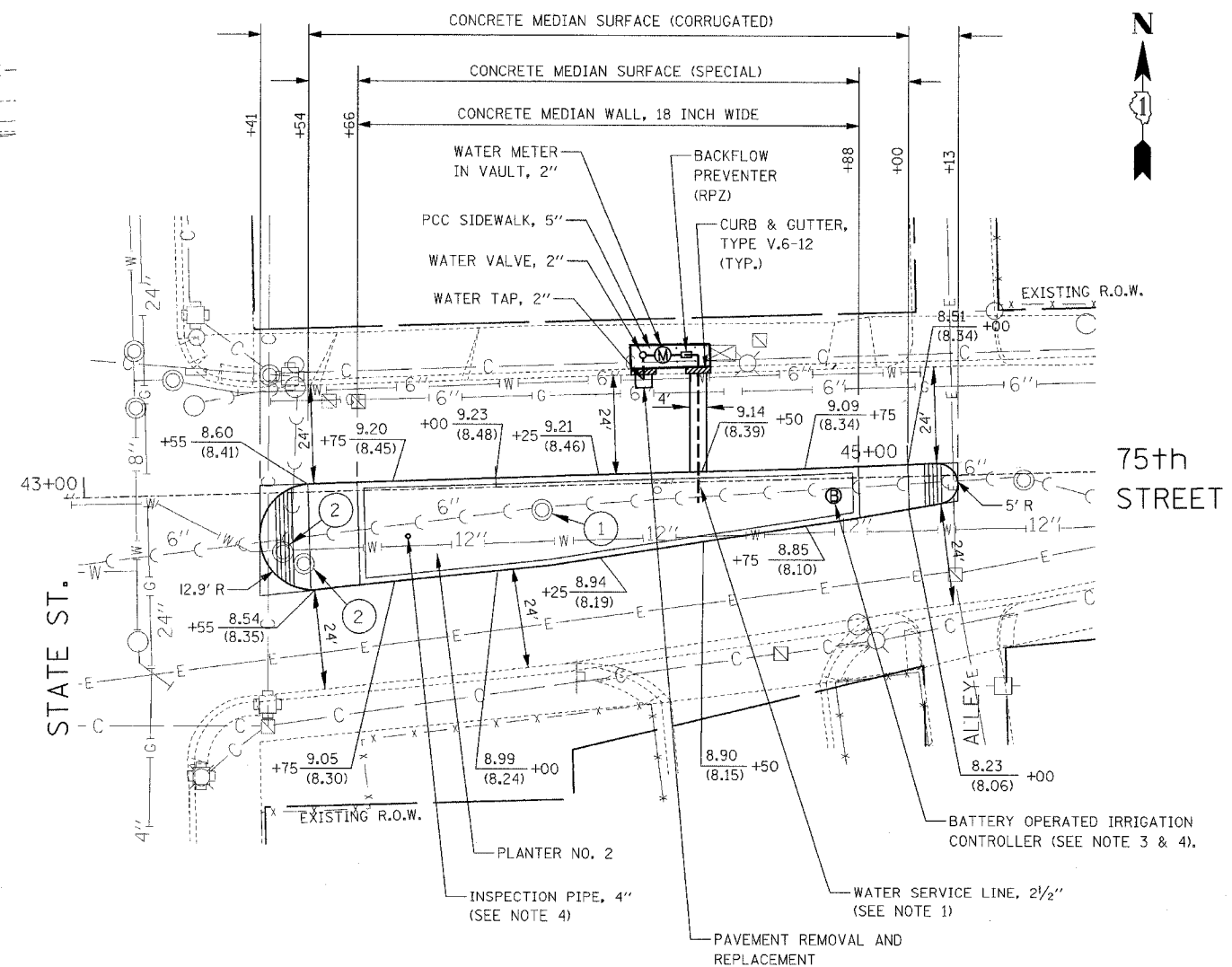
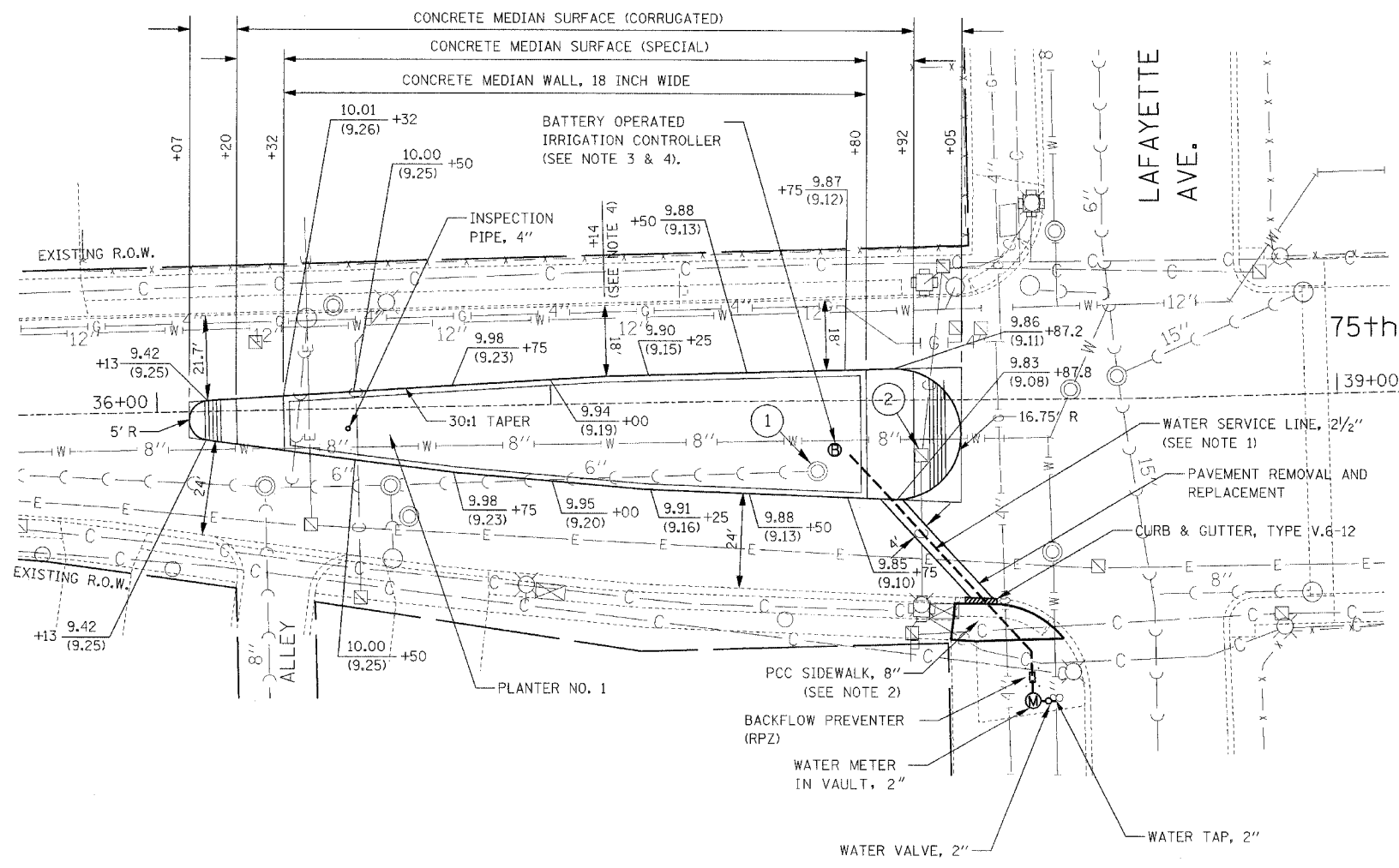


F.A.I. RTE.	SECTION	COUNTY	TOTAL SHEETS	SHEET NO.
94	*	COOK	31	9
STA.		TO STA.		
FED. ROAD DIST. NO.		ILLINOIS	FED. AID PROJECT	
*(1516.1, 1717 & 1818) I-5		62934 (17G)		

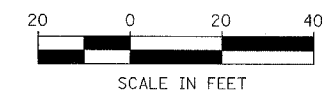


**LEGEND**

- X.XX TOP OF CURB ELEVATION
- (X.XX) EDGE OF PAVEMENT ELEVATION
- ① STRUCTURES TO BE ADJUSTED (SPECIAL)
- ② STRUCTURES TO BE ADJUSTED

**NOTES**

1. A 6" DUCTILE IRON SLEEVE SHALL BE USED WHEN WATER SERVICE LINE IS INSTALLED UNDER PAVEMENT. THE SLEEVE SHALL BE CONSIDERED INCLUDED IN THE CONTRACT UNIT PRICE FOR WATER SERVICE LINE.
2. PCC SIDEWALK, 8" SHALL BE CONSTRUCTED WITH DETECTABLE WARNINGS AS SHOWN ON THE DETAILS OF CURB RAMPS FOR PEOPLE WITH DISABILITIES. THIS WORK SHALL BE PAID FOR AT THE CONTRACT UNIT PRICE PER SQUARE FOOT FOR CAST IN PLACE TACTILE / DETECTABLE WARNING SURFACE SYSTEM FOR RAMPS FOR PEOPLE WITH DISABILITIES.
3. BATTERY OPERATED IRRIGATION CONTROLLER SHALL BE INCLUDED IN THE COST OF IRRIGATION SYSTEM.
4. PLACEMENT OF THE BATTERY OPERATED IRRIGATION CONTROLLER AND THE INSPECTION PIPE TO BE COORDINATED WITH TREE PLACEMENT.



REVISIONS	
NAME	DATE

ILLINOIS DEPARTMENT OF TRANSPORTATION  
 F.A.I. 94 (DAN RYAN EXPRESSWAY)  
**75TH STREET  
 MEDIAN PLAN**  
 SCALE: AS SHOWN  
 DATE: JULY 8, 2005  
 DRAWN BY: REW/RTA  
 CHECKED BY: JCM

FILE: L:\6552\02\00\USHWK\75th Median\_17G.dwg